



Energy Division

Components for the electrical network in wind turbine farms



CABLE JOINTS, CABLE TERMINATIONS, CABLE GLANDS, CABLE CLEATS
FEEDER PILLARS, FUSE LINKS, ARC FLASH, CABLE ROLLERS, CUT-OUTS

11KV 33KV CABLE JOINTS & CABLE TERMINATIONS
FURSE EARTHING
www.cablejoints.co.uk
Thorne and Derrick UK
Tel 0044 191 490 1547 Fax 0044 191 477 5371
Tel 0044 117 977 4647 Fax 0044 117 9775582



Our commitment. Your advantage.

Your first choice in high-performance solutions

Tyco Electronics Energy Division product range:

- **Cable accessories**
- **Connectors and fittings**
- **Switching and protection**
- **Lighting**
- **Insulators**
- **Insulation**
- **Surge arresters**
- **Power measurement and control**

Energy Division is a customer-focused, knowledge-driven organization working at the leading edge of technology. Many factors combine to make us a strong supply partner: among them are the availability and breadth of our product offering, our presence in multiple market segments and our structural stability and financial resources.



THE ONE-STOP SHOP

We offer a broad range of reliable and cost-effective, high-performance solutions with full customer support. This includes application and engineering assistance, hands-on field training and continuous after-sales support. Expertise of over 40 years in materials science, product design and process engineering goes into the invention, development, manufacture and marketing of our products.

Our high-performance components for electrical equipment in wind turbines and for electrical networks in wind turbine farms

Turbine

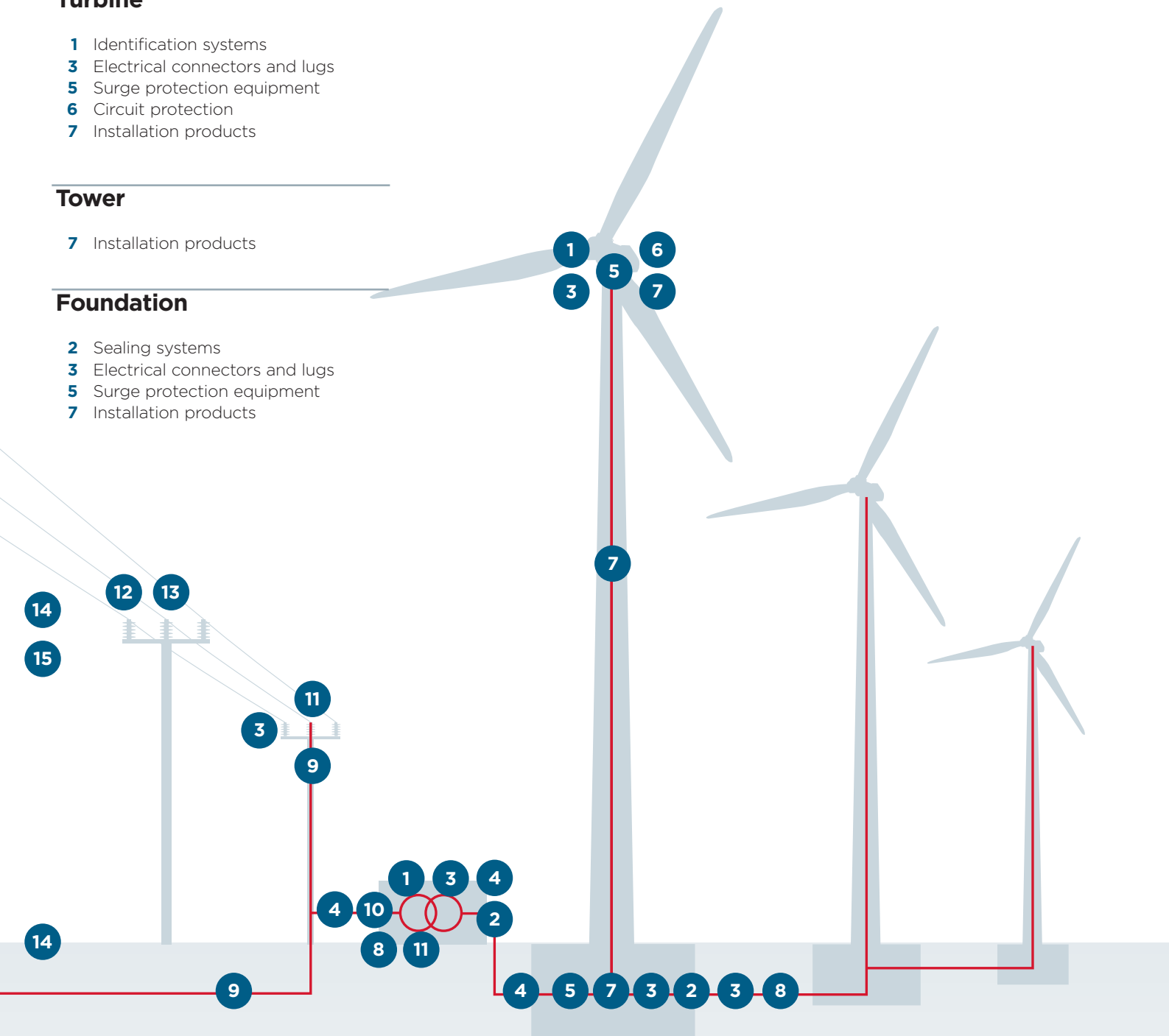
- 1 Identification systems
- 3 Electrical connectors and lugs
- 5 Surge protection equipment
- 6 Circuit protection
- 7 Installation products

Tower

- 7 Installation products

Foundation

- 2 Sealing systems
- 3 Electrical connectors and lugs
- 5 Surge protection equipment
- 7 Installation products



Wind farm internal LV network

- 3 Electrical connectors and lugs
- 4 LV and MV power measurement, control and protection
- 8 LV cable accessories

Transformer box

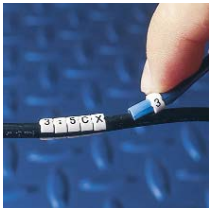
- 1 Identification systems
- 2 Sealing systems
- 3 Electrical connectors and lugs
- 4 LV and MV power measurement, control and protection
- 10 MV connecting systems
- 11 Insulation enhancement system

MV distribution HV transmission

- 3 Electrical connectors and lugs
- 4 LV and MV power measurement, control and protection
- 9 MV joints and terminations
- 10 MV connecting systems
- 11 Insulation enhancement system
- 12 MV insulators
- 13 Surge arresters
- 14 HV joints and terminations
- 15 Conductors and helical fittings

Identification systems

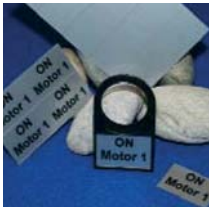
1



Pre-marked wire and cable markers



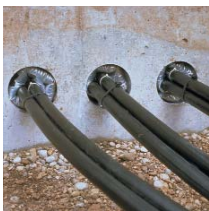
Computer-printable sleeves and tie-on marker systems



Signs, plates and panel labels

Sealing systems

2



Cold-applied duct sealings



Heat-shrinkable cable glands

Electrical connectors and lugs

3



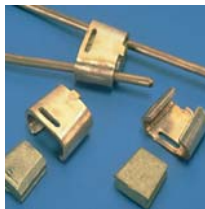
Connectors and lugs



Bimetallic Lugs



Mechanical terminal lugs and connectors



Wedge connectors



Earthing connectors



Universal multishear brass bolts



Insulated overhead line fittings

Power measurement, control and protection

4



Integra 1630 digital metering systems



DINtegra DIN-rail digital metering system



Paladin transducers



Protector trip relays



Analogue instruments



Current transformers

Surge protection equipment

5



Snap in modules for AC power protection



Distribution surge protectors for AC power systems

Circuit protection

6



Loadlimiter 63 MCB distribution board system



Loadline moulded-case circuit breakers MCCBs



Z frame ACBs



Modis 25/32 modular switchboard solution

Installation products

7



Cable riser clamps



Cable binding



Cable ties



Insulating tapes



Heat-shrinkable tubings

LV cable accessories

8



Resin inline and branch-off joints



Gel-filled inline and branch-off joints



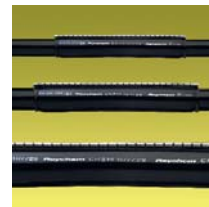
Cold-applied insulating sleeves



Heat-shrinkable terminations



Heat-shrinkable tape



Heat-shrinkable cable repair sleeves

MV joints and terminations

9



Cold-shrink / push-on joints



Heat-shrinkable branch-off joints



Heat-shrinkable joints



Cold-shrink / push-on terminations



Heat-shrinkable terminations indoor



Heat-shrinkable terminations outdoor

MV switchgear connections

10



Push-on unscreened separable connection systems for SF₆-switchgear



Push-on screened separable connection systems for SF₆-switchgear



Push-on right-angle and straight unscreened bushing boots



Push-on screened right-angle adaptors 1c 250A



Push-on screened straight adaptors 1c 250A



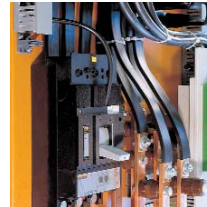
Push-on unscreened separable connection systems for SF₆-switchgear including surge arresters

Insulation enhancement system

11



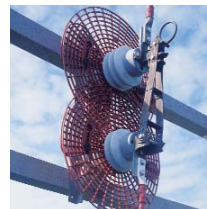
LV insulation enhancement products for transformer connections



Flexible insulated busbars



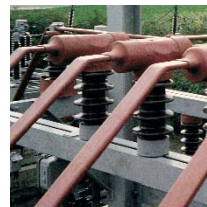
Overhead line protection



Squirrel guards



Bird protection cap



Busbar insulation system

MV insulators

12



Composite insulators



Modular lightweight insulators



Porcelain insulators

Surge arresters

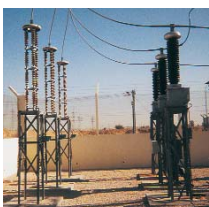
13



LV surge arresters



MV surge arresters



HV surge arresters

HV joints and terminations

14



Heat-shrinkable joints for polymeric cables up to 72 kV



Heat-shrinkable terminations up to 72 kV



Composite outdoor terminations for polymeric cables up to 170 kV



Compact switchgear dry terminations up to 145 kV

Installation tools



Gas torch



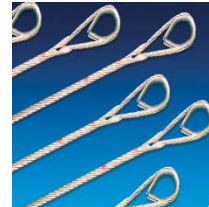
Compression tool

Conductors and helical fittings

15



Dampers



Heliformed guy dead ends



Heliformed guy conductor ties



Dog bone dampers



Crimping tool



Compression tools

The Energy Division, a global operating unit of Tyco Electronics develops manufactures and markets products and systems for the electrical power industry. Today, the Energy Division employs approximately 4.000 people and annual sales amount to almost \$800 million. Our products are extensively employed by power utilities and equipment manufacturers, in rail transport systems and in industry around the world.

All of the above information, including drawings, illustrations and graphic designs, reflects our present understanding and is to the best of our knowledge and belief correct and reliable. Users, however, should independently evaluate the suitability of each product for the desired application. Under no circumstances does this constitute an assurance of any particular quality or performance. Such an assurance is only provided in the context of our product specifications or explicit contractual arrangements. Our liability for these products is set forth in our standard terms and conditions of sale. TE Logo and Tyco Electronics are trademarks.



CABLE JOINTS, CABLE TERMINATIONS, CABLE GLANDS, CABLE CLEATS
FEEDER PILLARS, FUSE LINKS, ARC FLASH, CABLE ROLLERS, CUT-OUTS

11KV 33KV CABLE JOINTS & CABLE TERMINATIONS
FURSE EARTHING
www.cablejoints.co.uk
Thorne and Derrick UK

Tel 0044 191 490 1547 Fax 0044 191 477 5371
Tel 0044 117 977 4647 Fax 0044 117 9775582