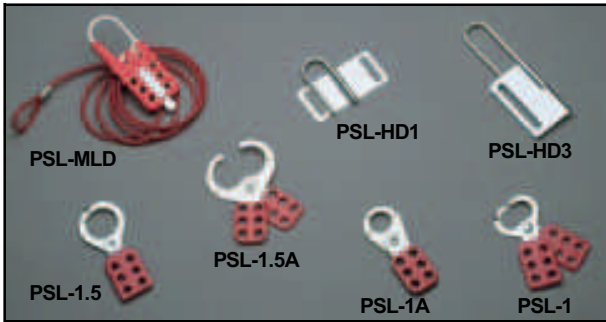


PANDUIT® Lockout Hasps and Padlock Accessories

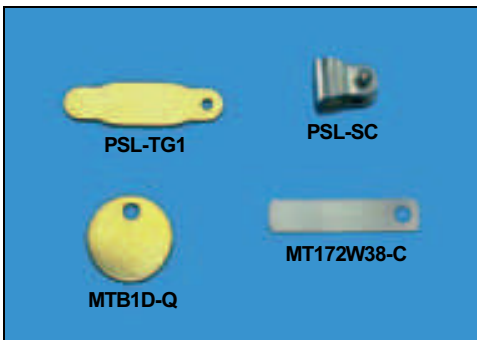
Lockout Hasps



More than one worker can lockout the same energy source for added safety. Heavy duty hasps (PSL-HD1 and PSL-HD3) have tamper-proof design for added security.

Part Number	Description	Max. No. Locks	Std. Pkg.*
PSL-MLD	Multiple Lockout Device; includes lockout hasp and cable	6	1
PSL-MLDH-X	PSL-MLD Lockout Hasps without cable	6	10
PSL-1	Hasp with 1.0" (25 mm) Diameter Jaw and Overlapping Tabs	6	12
PSL-1.5	Hasp with 1.5" (38 mm) Diameter Jaw and Overlapping Tabs	6	12
PSL-1A	Hasp with 1.0" (25 mm) Diameter Jaw	6	12
PSL-1.5A	Hasp with 1.5" (38 mm) Diameter Jaw	6	12
PSL-HD1	Heavy Duty Hasp with 1.0" x 1.0" (25 x 25 mm) Clearance	5	12
PSL-HD3	Heavy Duty Hasp with 1.0" x 3.0" (25 x 76 mm) Clearance	7	12

Metal I.D. Tags and Collars



Part Number	Description	Std. Pkg.*
PSL-TG1	Brass identification tag	12
PSL-SC	Shackle Collar for attaching tags to padlocks	12
MTB1D-Q	Brass identification tag 1.00" (25 mm) diameter	25
MT172W38-C	Stainless steel tag 1.72" x 0.38" (44 x 9 mm)	100

Fixturing for all brass and stainless steel tags is available for use with the Manual Indenter Marking Press. Contact Stainless Steel Systems Products Technical Support at 866-405-6659.

Padlock Eyes



- These padlock eyes can help bring you into compliance with OSHA standards, which require that equipment be modified to accept locks and lockout devices
- Surface mounted eyes are made of 0.13" (3 mm) hard wrought steel
- Tamper resistant inside mounting eyes - 2.50" (64mm) wide, accept shackle diameters up to 0.63" (16 mm)

Part Number	Description	Std. Pkg.*
PSL-PE1	Padlock eyes, angled (Metal mounting screws included)	1
PSL-PE2	Padlock eyes, straight (Wood mounting screws included)	1

Chain Attachment



- Optional 9.0" (229 mm) chain for permanently attaching lockouts at pre-designed locations

Part Number	Description	Std. Pkg.*
PSL-PC	Heavy duty zinc plated steel chain with chain holder attached	1



CABLE JOINTS, CABLE TERMINATIONS, CABLE GLANDS, CABLE CLEATS
FEEDER PILLARS, FUSE LINKS, ARC FLASH, CABLE ROLLERS, CUT-OUTS