



### M-Boss System, printer and cassette

#### Features and Benefits

M-Boss stainless steel (S 316) markers are used to identify cables and pipes in all areas where severe environmental, mechanical or chemical conditions occur; e.g. offshore / petrochemical industry, shipbuilding, railways, and mining.

The 4mm high characters are marked with a computer driven stainless steel embossing machine with supplied software. A range of 4 marker sizes is now available; 10 characters with 60 mm tags, 15 characters with 80 mm tags, 20 characters with 100 mm tags.

Also available is a double line option to create a maximum of 40 characters with a wider 100 mm tag. Each of these sizes have 2 available marker designs. A bridge version that is applied to pipes with

**HellermannTyton** metal cable ties up to 8mm wide, and a rivet version which is used to mark flat surfaces. Each pack comes with 200 blank markers.

The M-Boss Printer is easy to install and run, and is both quiet and clean. The electrically driven system can operate from an ordinary office power source; there is no need for an air supply. The printer is able to work on offshore platforms using a 60Hz power source. As the markers are embossed, there is no metal waste or metallic dust.

The supplied M-Boss Cassette of 10 markers is palm sized. The cassette is used for marker production and can then be taken by installers to their place of work. The marked strips can be "fanned out" from the magazine so enabling the installer to quickly identify which marker is needed.



The M-Boss System.

The standard Printer has a 42 piece character set:

Letters: A B C D E F G H I J K L M N O P Q R S T U V W X Y Z

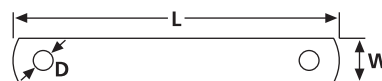
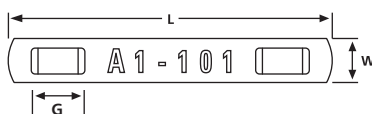
Numbers: 0 1 2 3 4 5 6 7 8 9

Symbols: & - / . , ' ,

Material Data M-Boss Machine	
Power Supply	<b>Electrical</b>
Cycle Time	<b>15 sec. for 20 character tag</b>
Weight (Kg)	<b>approx. 87kg</b>
L x H x W	<b>700 x 420.00 x 830.00</b>



Material Data M-Boss Marker	
Material	<b>Stainless Steel Type SS316 (SS316)</b>
Operating Temperature	<b>-80 °C to +538 °C</b>



Technical Table

Article-No.	Type	Fixing Method	Strap Width max. (G)	Ø D	Number of characters	Width (W)	Length (L)
540-10000	<b>MBOSS PRINTER</b>	-	-	-	-	830.00	700
540-10008	<b>MBC 10X60</b>	Metal tie MLT, MAT, MBT	8.00	-	10	10.00	60
540-10009	<b>MBC 10X80</b>	Metal tie MLT, MAT, MBT	8.00	-	15	10.00	80
540-10001	<b>MBC 10X100</b>	Metal tie MLT, MAT, MBT	8.00	-	20	10.00	100
540-10010	<b>MBC 14X100</b>	Metal tie MLT, MAT, MBT	8.00	-	40	14.00	100
540-10040	<b>MBCR 10X60</b>	Screw/Rivet	-	3.5	10	10.00	60
540-10041	<b>MBCR 10X80</b>	Screw/Rivet	-	3.5	15	10.00	80
540-10042	<b>MBCR 10X100</b>	Screw/Rivet	-	3.5	20	10.00	100
540-10043	<b>MBCR 14X100</b>	Screw/Rivet	-	3.5	40	14.00	100

All dimensions in mm. Subject to technical changes.



## M-Boss System, CombiPack

### Features and Benefits

Time saving is the driving force behind this unique to market concept. Since the markers are easy to pick from the cassette, and as enough cable ties are supplied to fix the markers to the cable, the user has a quicker marker install time than before as everything is conveniently packed in the box.

### Application

Ideal 'Kit' enabling users to have markers and cable ties in one handy container. Offered cable tie sizes are designed to meet 80% of known applications. 100 markers and 200 cable ties are supplied in each storage box.



M-Boss CombiPack.

Technical Table

Article-No.	Type	Width (W)	Length (L)	Pack Cont.
540-10022	MBC 10X60-MBT5S	10.00	60	–
540-10023	MBC 10X60-MBT8S	10.00	60	–
540-10024	MBC 10X60-MBT8H	10.00	60	–
540-10019	MBC 10X80-MBT5S	10.00	80	–
540-10020	MBC 10X80-MBT8S	10.00	80	–
540-10021	MBC 10X80-MBT8H	10.00	80	–
540-10016	MBC 10X100-MBT5S	10.00	100	–
540-10017	MBC 10X100-MBT8S	10.00	100	–
540-10018	MBC 10X100-MBT8H	10.00	100	–
540-10025	MBC 14X100-MBT5S	14.00	100	–
540-10026	MBC 14X100-MBT8S	14.00	100	–
540-10027	MBC 14X100-MBT8H	14.00	100	–

All dimensions in mm. Subject to technical changes.



### M-Boss Printshop

#### Features and Benefits

Low to medium volume custom printed stainless steel markers can now be ordered directly from HellermannTyton.

HellermannTyton's PrintShop facility is the ideal solution for producing crisp and clear embossed texts without the need to purchase an M-BOSS printer.

Annual volumes less than 40,000 markers are ideally served with our customised print service. Volumes higher than this are best served with our on-site marking system, M-BOSS PRINTER.

Print orders are dispatched in a handy cassette with a label clearly identifying the marker contents as well as the customer specified project number. This ensures users can clearly identify which cassette is needed for a particular task.

The cassette holds 10 markers of the same size and custom print orders are offered in multiples of cassettes.



M-Boss markers remain visible in areas of dirt, grease and paint.

Single line text and double line text printed markers are available.

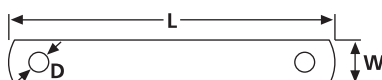
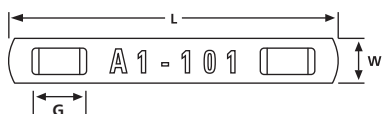
Single line text – there are 3 options;

- 10 characters on a 60 mm printed tag (10X60)
- 15 characters on a 80 mm printed tag (10X80)
- 20 characters on a 100 mm printed tag (10X100)

Double line text – there is 1 option;

- 40 characters (2 x 20 characters) on a 100 mm tag (14X100)

The markers can then be easily fanned out so that the installer can remove the required marker and install.



Material Data	
Material	<b>Stainless Steel Type SS316 (SS316)</b>
Colour	<b>Metal (ML)</b>
Chem. Material Properties	<b>Corrosion resistant, weather resistant, antimagnetic. Outstanding chemical resistance to aggressive chemicals, e.g.: industrial vapours, seawater, salt spray in on- and offshore areas, inorganic and hydrochloric acid and halogen salts.</b>
Operating Temperature	<b>-80 °C to +538 °C</b>



Technical Table

Article-No.	Type	Fixing Method	Strap Width max. (G)	Number of characters	Width (W)	Length (L)
540-10051	<b>MBCE-DE10X60-MBT5S</b>	Metal tie MLT, MAT, MBT	8.00	10	10.00	60
540-10052	<b>MBCE-DE10X60-MBT8S</b>	Metal tie MLT, MAT, MBT	8.00	10	10.00	60
540-10053	<b>MBCE-DE10X60-MBT8H</b>	Metal tie MLT, MAT, MBT	8.00	10	10.00	60
540-10054	<b>MBCE-DE10X80-MBT5S</b>	Metal tie MLT, MAT, MBT	8.00	15	10.00	80
540-10055	<b>MBCE-DE10X80-MBT8S</b>	Metal tie MLT, MAT, MBT	8.00	15	10.00	80
540-10056	<b>MBCE-DE10X80-MBT8H</b>	Metal tie MLT, MAT, MBT	8.00	15	10.00	80
540-10057	<b>MBCE-DE10X100-MBT5S</b>	Metal tie MLT, MAT, MBT	8.00	20	10.00	100
540-10058	<b>MBCE-DE10X100-MBT8S</b>	Metal tie MLT, MAT, MBT	8.00	20	10.00	100
540-10059	<b>MBCE-DE10X100-MBT8H</b>	Metal tie MLT, MAT, MBT	8.00	20	10.00	100
540-10060	<b>MBCE-DE14X100-MBT5S</b>	Metal tie MLT, MAT, MBT	8.00	40	14.00	100
540-10061	<b>MBCE-DE14X100-MBT8S</b>	Metal tie MLT, MAT, MBT	8.00	40	14.00	100
540-10062	<b>MBCE-DE14X100-MBT8H</b>	Metal tie MLT, MAT, MBT	8.00	40	14.00	100
540-10048	<b>MBCE-DE10X60</b>	Metal tie MLT, MAT, MBT	8.00	10	10.00	60
540-10049	<b>MBCE-DE10X80</b>	Metal tie MLT, MAT, MBT	8.00	15	10.00	80
540-10003	<b>MBCE-DE10X100</b>	Metal tie MLT, MAT, MBT	8.00	20	10.00	100
540-10050	<b>MBCE-DE14X100</b>	Metal tie MLT, MAT, MBT	8.00	40	14.00	100

All dimensions in mm. Subject to technical changes.



## Hellermark stainless steel marking, manual

### Features and Benefits

Hellermark stainless steel embossed marker tiles are designed for use in harsh and hazardous conditions. Hellermark is manufactured from grade 316 stainless steel which makes it ideal for use in aggressive environments.

With Hellermark SSM, it is possible to combine SSC sign carriers, SSM individual marker tiles and SSCP end clips into simple, individual markings. The sign carriers can take from 5 to 45 individual marker tiles, depending on their length.

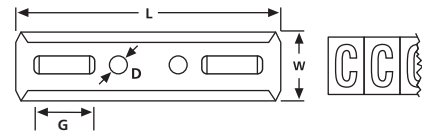
Simply snap the required markers into the stainless steel carriers (SSC range) and then lock the markers in place with a carrier end plug (SSCP).

The carriers are easily fastened using their own MBT or MAT series stainless steel cable ties with a size of up to 8 mm wide.

Alternatively, the two 3 mm holes on the carrier plate can be used for fixing by means of screws or rivets.



Hellermark SSM.



Technical Table

Article-No.	Type	Width (W)	Length (L)	Marker tiles per carrier	Pack Cont.
540-02010	SSCP	–	–	–	100
540-01046	SSC46	11.00	46	5	10
540-01056	SSC56	11.00	56	7	10
540-01082	SSC82	11.00	82	11	10
540-01106	SSC106	11.00	106	15	10
540-01134	SSC134	11.00	134	20	10
540-01286	SSC286	11.00	286	45	10

All dimensions in mm. Subject to technical changes.

Technical Table

Article-No.	Marking Text	Type	Pack Cont.
540-01600	0	SSM	200
540-01610	1	SSM	200
540-01620	2	SSM	200
540-01630	3	SSM	200
540-01640	4	SSM	200
540-01650	5	SSM	200
540-01660	6	SSM	200
540-01670	7	SSM	200
540-01680	8	SSM	200
540-01690	9	SSM	200
540-01700	+	SSM	200
540-01710	-	SSM	200
540-01730	Earth Symbol	SSM	200
540-01701	.	SSM	200
540-01702	,	SSM	200
540-01703	–	SSM	200
540-01704	&	SSM	200
540-01705	*	SSM	200
540-01706*	)	SSM	200
540-01707	;	SSM	200
540-01708*	>	SSM	200
540-01709	#	SSM	200
540-01711	@	SSM	200
540-01712	=	SSM	200
540-01713	~	SSM	200
540-01714	blank	SSM	200
540-01720*	/	SSM	200

\* These symbols can also be used when rotated by 180°.

Technical Table

Article-No.	Marking Text	Type	Pack Cont.
540-01010	A	SSM	200
540-01020	B	SSM	200
540-01030	C	SSM	200
540-01040	D	SSM	200
540-01050	E	SSM	200
540-01060	F	SSM	200
540-01070	G	SSM	200
540-01080	H	SSM	200
540-01090	I	SSM	200
540-01100	J	SSM	200
540-01110	K	SSM	200
540-01120	L	SSM	200
540-01130	M	SSM	200
540-01140	N	SSM	200
540-01150	O	SSM	200
540-01160	P	SSM	200
540-01170	Q	SSM	200
540-01180	R	SSM	200
540-01190	S	SSM	200
540-01200	T	SSM	200
540-01210	U	SSM	200
540-01220	V	SSM	200
540-01230	W	SSM	200
540-01240	X	SSM	200
540-01250	Y	SSM	200
540-01260	Z	SSM	200



### Helatag 321, 840 protective laminate labels for very special requirements

#### Features and Benefits

This range of transparent adhesive labels is used to over laminate a printed label to give protection against aggressive chemical, high temperature or ultraviolet light. Material 321 has exceptional UV resistance and will survive 10 years in a central European climate.



Helatag protective laminates.

Material Data	
Material	<b>Type 321, Polyvinylfluoride Tedlar®, transparent (CL)</b>
Operating Temperature	<b>-40 °C to +130 °C</b>
Curing Temperature	<b>From +10 °C</b>
Adhesive	<b>Acrylic</b>
Thickness of Foil (µm)	<b>25</b>
Chem. Material Properties	<b>excellent resistance against alcohol, solvents on petroleum bases, ester and ketone. Special resistance against UV radiation</b>



Material Data	
Material	<b>Type 1207, Polyester (PET), transparent (CL)</b>
Operating Temperature	<b>-40 °C to +150 °C, intermittent +200 °C</b>
Curing Temperature	<b>from 0 °C</b>
Adhesive	<b>Acrylic</b>
Thickness of Foil (µm)	<b>60</b>
Chem. Material Properties	<b>excellent resistance against alcohol, petrol, solvents, butanol, etyl- and butylcellosolve solvents, battery acid</b>



#### Technical Table

Article-No.	Type	Colour	Width (W)	Height (H)	Width of Liner (WL)	Labels per Row	Pack Cont.
Thermal Transfer – Protecting Laminating , Material 321							
596-25321	<b>TAG1325TL3-321-CL</b>	Transparent (CL)	30.48	17.78	101.60	3	5000
596-38321	<b>TAG0638TL2-321-CL</b>	Transparent (CL)	43.18	11.43	94.90	2	5000
596-51321	<b>TAG1351TL1-321-CL</b>	Transparent (CL)	55.88	17.78	62.00	1	2000
596-52321	<b>TAG2551TL1-321-CL</b>	Transparent (CL)	55.88	30.48	62.00	1	1000
596-63321	<b>TAG3863TL1-321-CL</b>	Transparent (CL)	68.58	43.18	75.00	1	1000

All dimensions in mm. Subject to technical changes.

#### Technical Table

Article-No.	Type	Colour	Width (W)	Height (H)	Width of Liner (WL)	Labels per Row	Pack Cont.
Thermal Transfer – Protecting Laminating , Material 1207							
596-32512	<b>TAG1325TL3-1207-CL</b>	Transparent (CL)	30.48	17.78	101.60	3	5000
596-63812	<b>TAG0638TL2-1207-CL</b>	Transparent (CL)	43.18	11.43	94.90	2	5000
596-35112	<b>TAG1351TL1-1207-CL</b>	Transparent (CL)	55.88	17.78	62.00	1	2000
596-55112	<b>TAG2551TL1-1207-CL</b>	Transparent (CL)	55.88	30.48	62.00	1	1000
596-38631	<b>TAG3863TL1-1207-CL</b>	Transparent (CL)	68.58	43.18	75.00	1	1000

All dimensions in mm. Subject to technical changes.



Please Note for Product Specific Approvals please refer to the Appendix