



TY Plastic Rivets

Features and Benefits

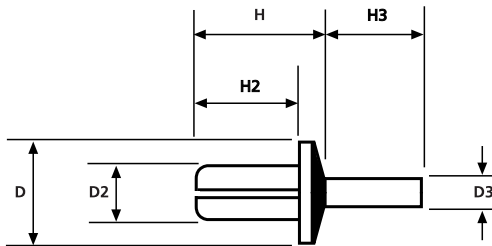
Moulded in one piece and simply applied by pushing the pin into the body of the rivet. Two types are available the TY3PI, TY8PI, pins are inserted by means of a rivet placement tool whilst the TY8P2 types have a “mushroom” head which allows the pin to be simply hammered in.

Application

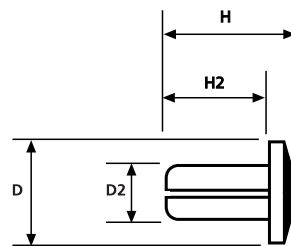
These simple to use plastic rivets are ideal for improving productivity in the working environment, saving time and money over more conventional jointing methods. Ideal for joining panels, or components to panels in a wide range of industries from automotive to panel building.



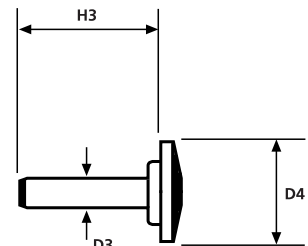
Plastic Rivets TY8P1.



Plastic Rivets TY3P1/8P1



Plastic Rivets TY8P2



Material Data

Material	Polyamide 6.6 (PA66)
Operating Temperature	-40 °C to +85 °C Continuous, (+105 °C for 500 h)
Flammability	UL94 V2



Technical Table

Article-No.	Type	Height (H)	Height (H2)	Height (H3)	Ø D	Ø D2	Ø D3	Ø D4	Colour	Material
241-11310	TY3P1	7.5	6.0	5.3	6.0	3.0	1.7	–	Black (BK)	PA66
241-11319	TY3P1	7.5	6.0	5.3	6.0	3.0	1.7	–	Natural (NA)	PA66
241-11810	TY8P1	10.0	8.0	7.5	8.0	4.0	2.6	–	Black (BK)	PA66
241-11819	TY8P1	10.0	8.0	7.5	8.0	4.0	2.6	–	Natural (NA)	PA66
241-11820	TY8P2*	10.0	8.0	11.5	8.0	4.0	2.6	8.0	Black (BK)	PA66
241-11829	TY8P2*	10.0	8.0	11.5	8.0	4.0	2.6	8.0	Natural (NA)	PA66

All dimensions in mm. Subject to technical changes.

*TY8P2 consist of two unattached parts.



Aluminium "P-Clips" – with/without a Rubber Insert

Features and Benefits

Offering a simple, yet secure fixing, this range of clips can be used as a simple pipe or cable fixing (for example within caravan construction), or with the addition of the Chloroprene insert can be used to secure parts subject to vibration (for example to retain capacitors on a PCB).

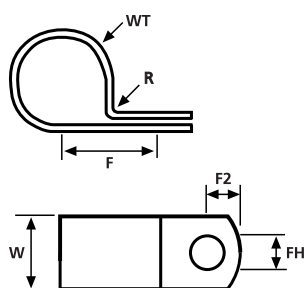
Ideal for use in high temperatures or for applications that require the strength of a metal component.

Application

Manufactured from a high quality aluminium these P-Clips provide flexibility and yet give a permanent fixing in the most arduous environments. The addition of a Chloroprene insert provides the cable or pipe bundle with a high degree of protection against vibration, reduces noise and also offers electrical isolation.



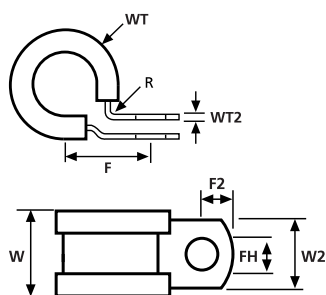
P-Clips manufactured in polyamide, aluminium, or aluminium with a chloroprene insert.



Aluminium P Clips

Material Data

Material	Aluminium-alloy
Colour	Natural (NA)
Operating Temperature	-40 °C to +180 °C



Aluminium P Clips with a Chloroprene insert

Material Data

Material	Aluminium-alloy, Chloroprene (CR)
Colour	Natural (NA), Black (BK)
Operating Temperature	-20 °C to +80 °C



Aluminium "P-Clips" – with/without a Rubber Insert

Technical Table

Article-No.	Type	Width (W)	Width (W2)	Wall (WT)	Wall (WT2)	Fixing Hole Ø (FH)	Bundle Ø max.	Fixing Hole Centres (F)	Fixing Hole Centres (F2)	Radius (R)	Material	Colour
211-10040	ALU4	12.7	–	0.8	–	5.2	6.4	11.6	5.5	1.6	ALU	Natural (NA)
211-10050	ALU5	12.7	–	0.8	–	5.2	8.0	12.6	5.5	1.6	ALU	Natural (NA)
211-10060	ALU6	12.7	–	0.8	–	5.2	9.5	13.4	5.5	1.6	ALU	Natural (NA)
211-10070	ALU7	12.7	–	0.8	–	5.2	11.1	14.2	5.5	1.6	ALU	Natural (NA)
211-10080	ALU8	12.7	–	0.8	–	5.2	12.7	15.0	5.5	1.6	ALU	Natural (NA)
211-10100	ALU10	12.7	–	0.8	–	5.2	15.9	16.6	5.5	1.6	ALU	Natural (NA)
211-10110	ALU11	12.7	–	1.3	–	5.2	17.5	19.1	5.5	2.8	ALU	Natural (NA)
211-10120	ALU12	12.7	–	1.3	–	5.2	19.1	19.9	5.5	2.8	ALU	Natural (NA)
211-10130	ALU13	12.7	–	1.3	–	5.2	20.6	20.7	5.5	2.8	ALU	Natural (NA)
With chloroprene profile												
211-15040	ALU4C	16.3	12.7	3.7	0.8	5.2	3.2	11.6	5.5	1.6	ALU, CR	Black (BK)
211-15050	ALU5C	16.3	12.7	3.7	0.8	5.2	4.8	12.6	5.5	1.6	ALU, CR	Black (BK)
211-15060	ALU6C	16.3	12.7	3.7	0.8	5.2	6.4	13.4	5.5	1.6	ALU, CR	Black (BK)
211-15070	ALU7C	16.3	12.7	3.7	0.8	5.2	8.0	14.2	5.5	1.6	ALU, CR	Black (BK)
211-15080	ALU8C	16.3	12.7	3.7	0.8	5.2	9.5	15.0	5.5	1.6	ALU, CR	Black (BK)
211-15090	ALU9C	16.3	12.7	3.7	0.8	5.2	11.1	15.8	5.5	1.6	ALU, CR	Black (BK)
211-15100	ALU10C	16.3	12.7	3.7	0.8	5.2	12.7	16.6	5.5	1.6	ALU, CR	Black (BK)
211-15110	ALU11C	16.3	12.7	4.5	1.3	5.2	14.3	19.1	5.5	2.8	ALU, CR	Black (BK)
211-15120	ALU12C	16.3	12.7	4.5	1.3	5.2	15.9	19.9	5.5	2.8	ALU, CR	Black (BK)
211-15130	ALU13C	16.3	12.7	4.5	1.3	5.2	17.5	20.7	5.5	2.8	ALU, CR	Black (BK)
211-15140	ALU14C	16.3	12.7	4.5	1.3	5.2	19.1	21.5	5.5	2.8	ALU, CR	Black (BK)
211-15150	ALU15C	16.3	12.7	4.5	1.3	5.2	20.6	22.3	5.5	2.8	ALU, CR	Black (BK)
211-15160	ALU16C	16.3	12.7	4.5	1.3	5.2	22.2	23.1	5.5	2.8	ALU, CR	Black (BK)
211-15170	ALU17C	16.3	12.7	4.5	1.3	5.2	23.8	23.9	5.5	2.8	ALU, CR	Black (BK)
211-15180	ALU18C	16.3	12.7	4.5	1.3	5.2	25.4	24.6	5.5	2.8	ALU, CR	Black (BK)
211-15190	ALU19C	16.3	12.7	4.5	1.3	5.2	27.0	25.5	5.5	2.8	ALU, CR	Black (BK)
211-15200	ALU20C	16.3	12.7	4.5	1.6	5.2	28.6	27.0	5.5	3.2	ALU, CR	Black (BK)
211-15220	ALU22C	16.3	12.7	4.5	1.6	5.2	31.8	28.6	5.5	3.2	ALU, CR	Black (BK)
211-15230	ALU23C	16.3	12.7	4.5	1.6	5.2	33.3	29.4	5.5	3.2	ALU, CR	Black (BK)
211-15240	ALU24C	16.3	12.7	4.5	1.6	5.2	34.9	30.2	5.5	3.2	ALU, CR	Black (BK)
211-15250	ALU25C	16.3	12.7	4.5	1.6	5.2	36.5	30.8	5.5	3.2	ALU, CR	Black (BK)
211-15260	ALU26C	16.3	12.7	4.5	1.6	5.2	38.1	31.7	5.5	3.2	ALU, CR	Black (BK)
211-15280	ALU28C	16.3	12.7	4.5	1.6	5.2	41.3	33.3	5.5	3.2	ALU, CR	Black (BK)
211-15290	ALU29C	16.3	12.7	4.5	1.6	5.2	42.9	34.1	5.5	3.2	ALU, CR	Black (BK)
211-15300	ALU30C	16.3	12.7	4.5	1.6	5.2	44.5	34.9	5.5	3.2	ALU, CR	Black (BK)
211-15340	ALU34C	16.3	12.7	4.5	1.6	5.2	50.8	38.1	5.5	3.2	ALU, CR	Black (BK)

All dimensions in mm. Subject to technical changes.



HP Plastic P-Clips

Features and Benefits

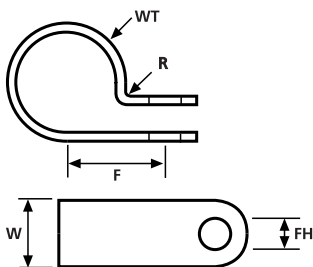
Manufactured from Polyamide these P-Clips offer good temperature resistance as well as offering high strength. A feature of the NX clips is their versatility to accept cables of differing sizes through the use of a range of fixing holes – this feature enables users to minimise stock holding of a large range of clips.

Application

For permanent or semi-permanent cable fixings, this range of P-Clips can be used in a variety of industries. Their light weight makes them particularly suitable for use in the aerospace industry where minimising weight, but retaining a strong fixing is vitally important.





P-Clip HP.





P-Clip H1P-H18P

Material Data	
Material	Polyamide 6.6 (PA66)
Operating Temperature	-40 °C to +85 °C Continuous, (+105 °C for 500 h)
Flammability	UL94 V2

Material Data	
Material	Polyamide 6.6 Heat Stabilised (PA66HS)
Operating Temperature	-40 °C to +105 °C Continuous, (+145 °C for 500 h)
Flammability	UL94 V2



HP Plastic P-Clips

Technical Table

Article-No.	Type	Width (W)	Wall (WT)	Fixing Hole Ø (FH)	Bundle Ø max.	Fixing Hole Centres (F)	Radius (R)	Material	Colour
211-60019	H1P	10.0	0.8	4.2	3.2	8.5	0.5	PA66	Natural (NA)
211-60010	H1P	10.0	0.8	4.2	3.2	8.5	0.5	PA66HS	Black (BK)
211-60029	H2P	10.0	1.0	4.2	5.0	9.5	1.0	PA66	Natural (NA)
211-60020	H2P	10.0	1.0	4.2	5.0	9.5	1.0	PA66HS	Black (BK)
211-60039	H3P	10.0	1.0	4.2	6.5	10.0	1.0	PA66	Natural (NA)
211-60002	H3P	10.0	1.0	4.2	6.5	10.0	1.0	PA66HS	Black (BK)
211-60049	H4P	10.0	1.2	4.2	8.0	10.0	1.0	PA66	Natural (NA)
211-60003	H4P	10.0	1.2	4.2	8.0	10.0	1.0	PA66HS	Black (BK)
211-60059	H5P	10.0	1.2	4.2	9.5	11.0	1.0	PA66	Natural (NA)
211-60004	H5P	10.0	1.2	4.2	9.5	11.0	1.0	PA66HS	Black (BK)
211-60069	H6P	10.0	1.2	4.2	11.0	13.0	1.0	PA66	Natural (NA)
211-60005	H6P	10.0	1.2	4.2	11.0	13.0	1.0	PA66HS	Black (BK)
211-60079	H7P	10.0	1.2	4.2	12.5	14.0	1.5	PA66	Natural (NA)
211-60006	H7P	10.0	1.2	4.2	12.5	14.0	1.5	PA66HS	Black (BK)
211-60089	H8P	10.0	1.5	4.2	14.0	15.0	1.5	PA66	Natural (NA)
211-60007	H8P	10.0	1.5	4.2	14.0	15.0	1.5	PA66HS	Black (BK)
211-60099	H9P	10.0	1.5	4.2	16.0	16.0	1.5	PA66	Natural (NA)
211-60109	H10P	10.0	1.5	4.2	17.5	17.0	1.5	PA66	Natural (NA)
211-60119	H11P	10.0	1.5	4.2	19.0	18.0	2.0	PA66	Natural (NA)
211-60120	H11P	10.0	1.5	4.2	19.0	18.0	2.0	PA66HS	Black (BK)
211-60129	H12P	10.0	1.5	4.2	20.5	19.0	2.0	PA66	Natural (NA)
211-60139	H13P	12.0	1.5	5.2	22.0	20.5	2.0	PA66	Natural (NA)
211-60149	H14P	12.0	1.5	5.2	24.0	21.5	2.0	PA66	Natural (NA)
211-60159	H15P	12.0	1.5	5.2	25.5	23.0	2.5	PA66	Natural (NA)
211-60169	H16P	12.0	1.5	5.2	28.5	24.0	2.5	PA66	Natural (NA)
211-60179	H17P	12.0	1.5	5.2	31.5	26.0	2.5	PA66	Natural (NA)
211-60189	H18P	12.0	1.5	5.2	35.0	27.5	2.5	PA66	Natural (NA)

All dimensions in mm. Subject to technical changes.



SNP – Snapper Hose Clips

Features and Benefits

Up to 5 times faster to install than conventional types these releasable and reusable plastic hose clips can be applied with the hose in place, will not rust or corrode and can be opened by a simple lateral movement of the 'head'. Available in both Acetal (POM) and Glass Filled Nylon (PA) to meet high operating temperature requirements.

Application

Replacing metal hose clips the SNP range can be used in industries as diverse as agriculture to medical, to domestic appliances. Suitable for applications with high vibration they can be installed by hand, or with an application tool.

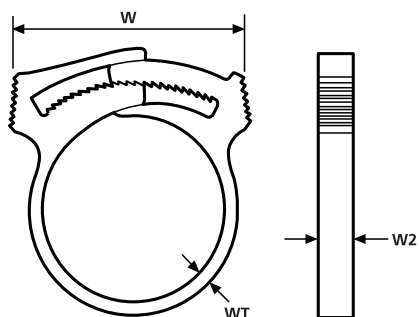


SNP – Snapper Hose Clips range.

Application Tool	Registration Numbers
ASNP2-22	1
ASNP24-70	2
MSNP1-70	3

Detailed tool specifications can be found in chapter application tools page 426.

Material Data	
Material	Polyacetal (POM)
Operating Temperature	-40 °C to +85 °C
Flammability	UL94 HB



SNP – Snapper Hose Clips range

Material Data	
Material	Polyamide 6.6 Glassfibre reinforced (PA66GF13%)
Operating Temperature	-30 °C to +105 °C
Flammability	UL94 HB





SNP – Snapper Hose Clips

Technical Table

Article-No.	Type	Bundle Ø min.	Bundle Ø max.	Width (W) min.	Width (W) max.	Width (W2)	Wall (WT)	Material	Colour	Application Tool
192-10010	SNP1	6.0	6.8	8.4	11.7	3.8	1.0	PA66GF13	Black (BK)	1, 3
193-00150	SNP1.5	7.8	9.2	13.0	17.0	3.7	1.4	PA66GF13	Black (BK)	3
192-10020	SNP2	9.3	10.5	12.2	17.6	5.9	1.7	PA66GF13	Black (BK)	1, 3
192-10040	SNP4	10.4	11.7	13.3	19.2	5.8	1.7	PA66GF13	Black (BK)	1, 3
192-10060	SNP6	11.7	13.3	14.7	21.6	5.9	1.7	PA66GF13	Black (BK)	1, 3
192-10070	SNP7	11.4	13.7	18.4	28.5	5.9	1.7	PA66GF13	Black (BK)	1, 3
192-10080	SNP8	13.1	15.0	16.7	24.9	5.7	1.7	PA66GF13	Black (BK)	1, 3
192-10100	SNP10	14.5	16.6	17.6	26.9	5.9	1.8	PA66GF13	Black (BK)	1, 3
192-10120	SNP12	15.4	18.0	20.1	27.4	5.8	1.8	PA66GF13	Black (BK)	1, 3
192-10140	SNP14	17.9	20.4	19.0	29.7	5.9	1.7	PA66GF13	Black (BK)	1, 3
192-10160	SNP16	19.1	21.7	19.9	30.8	5.8	1.5	PA66GF13	Black (BK)	1, 3
192-10180	SNP18	20.0	23.1	22.2	34.4	5.9	1.7	PA66GF13	Black (BK)	1, 3
192-10190	SNP19	22.3	25.3	24.4	36.1	5.9	1.7	PA66GF13	Black (BK)	1, 3
192-10220	SNP22	23.7	27.4	23.9	37.7	6.0	1.8	PA66GF13	Black (BK)	1, 3
192-10240	SNP24	25.8	29.2	26.6	39.4	7.3	1.7	PA66GF13	Black (BK)	2, 3
192-10280	SNP28	28.8	33.2	26.0	42.1	7.3	1.7	PA66GF13	Black (BK)	2, 3
192-10320	SNP32	31.2	35.8	27.3	44.4	7.3	1.8	PA66GF13	Black (BK)	2, 3
192-10360	SNP36	37.8	44.0	32.4	53.8	7.3	1.7	PA66GF13	Black (BK)	2, 3
192-10380	SNP38	41.0	48.1	35.6	57.5	7.3	1.8	PA66GF13	Black (BK)	2, 3
192-10420	SNP42	44.5	52.2	35.7	59.8	7.3	1.7	PA66GF13	Black (BK)	2, 3
192-10500	SNP50	52.2	58.6	36.5	60.4	7.3	1.7	PA66GF13	Black (BK)	2, 3
191-10019	SNP1(E)	5.8	6.5	8.1	11.5	3.8	1.0	POM	Natural (NA)	1, 3
191-10029	SNP2(E)	8.7	10.0	17.0	21.0	6.0	1.5	POM	Natural (NA)	1, 3
191-10039	SNP3(E)	10.0	11.4	19.0	25.0	6.0	1.8	POM	Natural (NA)	1, 3
191-10049	SNP4(E)	10.8	12.3	19.0	23.0	6.0	1.8	POM	Natural (NA)	1, 3
191-10069	SNP6(E)	12.0	13.7	19.0	24.0	6.0	1.8	POM	Natural (NA)	1, 3
191-10089	SNP8(E)	13.7	15.3	19.0	24.0	6.0	1.8	POM	Natural (NA)	1, 3
191-10109	SNP10(E)	15.0	16.8	19.0	24.0	6.0	1.8	POM	Natural (NA)	1, 3
191-10129	SNP12(E)	16.8	18.4	19.0	24.0	6.0	1.8	POM	Natural (NA)	1, 3
191-10149	SNP14(E)	18.1	19.9	19.0	24.0	6.0	1.8	POM	Natural (NA)	1, 3
191-10169	SNP16(E)	19.9	21.7	19.0	24.0	6.0	1.9	POM	Natural (NA)	1, 3
191-10189	SNP18(E)	21.4	23.0	16.0	22.0	6.0	1.9	POM	Natural (NA)	1, 3
191-10209	SNP20(E)	22.7	24.7	20.0	26.0	6.0	1.8	POM	Natural (NA)	1, 3
191-10229	SNP22(E)	25.3	27.3	20.0	26.0	6.0	1.6	POM	Natural (NA)	1, 3
191-10249	SNP24(E)	26.5	28.6	20.0	26.0	6.0	2.0	POM	Natural (NA)	2, 3
191-10329	SNP32(E)	30.3	33.1	27.0	34.0	7.5	2.0	POM	Natural (NA)	2, 3
191-10349	SNP34(E)	32.5	35.1	27.0	34.0	7.5	2.0	POM	Natural (NA)	2, 3
191-10369	SNP36(E)	34.8	37.1	27.0	34.0	7.5	2.0	POM	Natural (NA)	2, 3
191-10389	SNP38(E)	36.7	38.9	27.0	34.0	7.5	2.0	POM	Natural (NA)	2, 3
191-10429	SNP42(E)	41.0	44.2	32.0	45.0	7.5	2.0	POM	Natural (NA)	2, 3
191-10469	SNP46(E)	44.6	47.6	32.0	45.0	7.5	2.0	POM	Natural (NA)	2, 3
191-10509	SNP50(E)	48.8	52.0	32.0	45.0	7.5	2.0	POM	Natural (NA)	2, 3
191-10549	SNP54(E)	52.3	55.7	32.0	45.0	7.5	2.0	POM	Natural (NA)	2, 3
191-10589	SNP58(E)	56.7	59.2	31.0	39.0	7.5	2.0	POM	Natural (NA)	2, 3
191-10629	SNP62(E)	61.1	63.5	31.0	39.0	7.5	2.0	POM	Natural (NA)	2, 3

All dimensions in mm. Subject to technical changes.



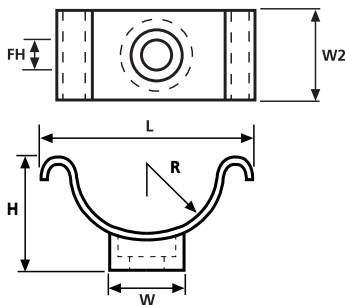
Cradle Clips

Features and Benefits

A simple, versatile method of bundling cables - the clamp consists of two parts, the "clip base" for mounting onto a panel, and the elasticated "loop". Suitable for pre-assembly, prototyping or applications requiring the addition or removal of cables. The loop is simply stretched over the clip offering a simple and quick method of containing cables.

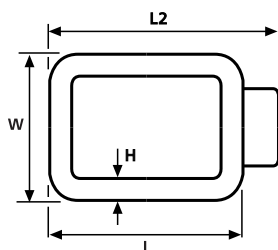


Cradle Clip.



Cradle Clip C1 - 3

Material Data	
Material	Polyamide 6.6 (PA66)
Operating Temperature	-40 °C to +85 °C Continuous, (+105 °C for 500 h)
Flammability	UL94 V2



Retaining Ring R1 - 3

Material Data	
Material	Flexible Polyvinyl Chloride, cadmium free (PVC)
Operating Temperature	-35 °C to +85 °C
Flammability	UL94 V2

Technical Table

Article-No.	Type	Length (L)	Length (L2)	Width (W)	Width (W2)	Height (H)	Radius (R)	Fixing Hole Ø (FH)	Material	Colour
201-10010	C1	25.0	-	12.7	15.5	14.0	6.3	4.8	PA66	Black (BK)
201-10020	C2	35.0	-	12.7	15.5	18.0	11.0	4.8	PA66	Black (BK)
201-10030	C3	48.0	-	12.7	15.5	25.0	17.5	4.8	PA66	Black (BK)
201-20010	R1	16.0	22.0	23.8	-	3.2	-	-	PVC	Black (BK)
201-20020	R2	22.0	29.0	23.8	-	3.2	-	-	PVC	Black (BK)
201-20030	R3	33.0	39.0	23.8	-	3.2	-	-	PVC	Black (BK)

All dimensions in mm. Subject to technical changes.



Klam-Klip (KK)

Features and Benefits

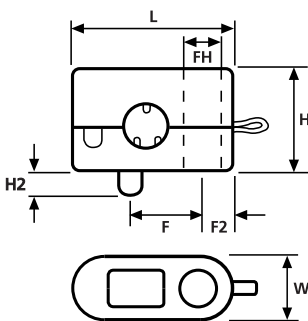
Klam-Klips guide and secure leads with a simple one screw fixing. The two halves of the clip are linked to ensure that parts are not lost during any re-wiring and an anti-rotation pin ensures that the leads do not become twisted during installation.



Klam-Klip KK1-4.



Klam-Klip KK1-4.



Klam-Klip Cable Restraints

Material Data	
Material	Polyamide 6.6 (PA66)
Operating Temperature	-40 °C to +85 °C Continuous, (+105 °C for 500 h)
Flammability	UL94 V2



Technical Table

Article-No.	Type	Length (L)	Width (W)	Height (H)	Height (H2)	Fixing Hole Ø (FH)	Bundle Ø min.	Bundle Ø max.	Fixing Hole Centres (F2)	Fixing Hole Centres (F3)	Material	Colour
234-10100	KK1	22.0	8.8	14.0	3.5	5.0	4.5	5.7	10.0	4.5	PA66	Black (BK)
234-10200	KK2	22.0	8.8	14.0	3.5	5.0	5.5	6.7	10.0	4.5	PA66	Black (BK)
234-10300	KK3	22.0	8.8	14.0	3.5	5.0	6.5	7.7	10.0	4.5	PA66	Black (BK)
234-10400	KK4	22.0	8.8	14.0	3.5	5.0	7.5	8.5	10.0	4.5	PA66	Black (BK)

All dimensions in mm. Subject to technical changes.



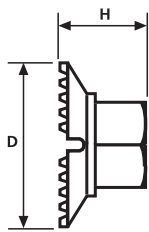
KM Plastic Nuts

Features and Benefits

Compared to traditional metal hexagonal nuts, these KM nuts offer much faster assembly as they are simply pushed onto the bolt by hand. They can be easily opened at any time using a normal spanner. Available for both 5 mm and 6 mm ISO threaded bolts.

Application

KM plastic nuts can be used in virtually all applications where metal nuts may have been used – offering benefits in speed of application, weight saving and corrosion resistance they also offer a secure fixing when subject to vibration. Typical applications can be found in a wide variety of industries from automotive to white goods (domestic appliances).



Plastic Nuts KM5, 6

Material Data

Material	Polyamide 6.6 High Impact Modified, Heat Stabilised (PA66HIRHS)
Operating Temperature	-40 °C to +105 °C
Flammability	UL94 HB



Material Data

Material	Polyamide 6.6 (PA66)
Operating Temperature	-40 °C to +85 °C Continuous, (+105 °C for 500 h)
Flammability	UL94 V2



Technical Table

Article-No.	Type	Ø D	Height (H)	Nut Size (NS)	Colour	Material
150-51910	KM5	16.5	9.5	9.0	Black (BK)	PA66HIRHS
150-61910	KM6	17.5	9.6	10.0	Black (BK)	PA66

All dimensions in mm. Subject to technical changes.



BMS 100 Maintenance Kit

A practical 195 piece kit containing snapper hose clips, aluminium and plastic P-Clips, in addition to a variety of cable tie mounting bases and self adhesive clips. Ideal for use by electrical installers, maintenance engineers or laboratories.



195 Piece fixings kit, BMS 100.

Technical Table

Article-No.	Type	Content	Quantity	Description
151-00000	BMS-100	201-10010	8	Cradle Clip C1
		201-20020	8	Retaining Ring R2
		151-13021	5	Self Adhesive Clip RA13
		151-28349	10	Cable Tie Mount MB3A
		151-28459	7	Cable Tie Mount MB4CA
		151-75159	15	Wire Push in Clip WPC15
		152-11209	10	Rivet Mount TY5K2
		151-24660	20	Cable Tie Mount KR6G5
		234-10200	10	Klam-Klip Cable Restraint KK2
		151-12819	10	Self Adhesive Clip TY8H1S
		151-26860	10	Cable Tie Mount CL8
		191-10100	10	Snapper Hose Clip SNP10
		211-15080	5	Aluminium Clip ALU8C
		151-11813	10	Cable Tie Mount TY8G1S
		211-60090	7	Plastic Clip H8P
		151-31209	40	Cable Tie Mount CTAM2
151-27019	10	Cable Tie Mount LKC		

All dimensions in mm. Subject to technical changes.



CABLE JOINTS, CABLE TERMINATIONS, CABLE GLANDS, CABLE CLEATS
FEEDER PILLARS, FUSE LINKS, ARC FLASH, CABLE ROLLERS, CUT-OUTS

11KV 33KV CABLE JOINTS & CABLE TERMINATIONS
FURSE EARTHING
www.cablejoints.co.uk
Thorne and Derrick UK

Tel 0044 191 490 1547 Fax 0044 191 477 5371
Tel 0044 117 977 4647 Fax 0044 117 9775582