



ATEX & Class1 Division1 User Instructions

iCAM501U

This device complies with part 15 of the FCC Rules. Operation is subject to the following two conditions: (1) This device may not cause harmful interference, and (2) this device must accept any interference received, including interference that may cause undesired operation

Country of Origin: United Kingdom

This page is intentionally left blank.

Document Number **332346** Revision 02 (based on safety instructions 331684_02)

©2011 Extronics Limited. This document is Copyright Extronics limited.

Extronics reserve the right to change this manual and its contents without notice, the latest version applies.

Contents

Contents	4
1 Safety Information and Notes	5
1.1 Storage of this Manual	5
1.2 List of Notes	5
2 User Guide	7
2.1 Changing/Installing Batteries.....	7
2.2 Preparing for first use	9
2.3 Powering On / Off.....	10
2.4 Setting Time and Date of the iCAM501U	10
2.5 Taking a picture.....	11
2.5.1 Taking a picture.....	12
2.5.2 Enabling the Flash	13
2.5.3 Enabling the Audio Recording Feature	14
2.5.4 Image blur analysis feature	15
2.5.5 Variable flash brightness.....	16
2.5.6 Picture Time Stamping.....	16
2.5.7 Error Codes.....	16
2.6 Installing the iCAM501U With an Operating System	17
2.6.1 Windows XP	17
2.6.2 Windows Vista / Windows 7	18
2.7 Setting Time and Date of the iCAM501U	20
2.7.1 Setting Time and Date in Windows XP	20
2.7.2 Setting Time and Date in Windows Vista	21
2.7.3 Setting Time and Date in Windows 7	21
2.7.4 Setting Time and Date in Apple OSX.....	22
2.8 Configuring How the Camera Behaves With Windows XP.....	23
2.9 Configuring How the Camera Behaves With Windows Vista/Windows 7	24
2.10 Configuring How the Camera Behaves With Apple OSx.....	25
2.11 Compatibility of the iCAM501U LED flash with optical flame detection equipment	28
3 Structure and Function	29
3.1 Intended Purpose Usage.....	29
3.2 Transportation and Storage.....	29
3.3 Authorized Persons.....	29
3.4 Cleaning and Maintenance.....	29
3.5 Safety Precautions	30
3.6 Cleaning and Maintenance Intervals	30
3.7 Aggressive substances and environments	30
3.8 Exposure to external stresses	30
4 Technical Data	31
5 EC Declaration of Conformity	32
6 FM Class 1 Division 1 USA Certificate of Compliance.....	33
7 FM Class 1 Division 1 Canadian Certificate of Compliance.....	35
8 Revision History	37

1 Safety Information and Notes

1.1 Storage of this Manual

Keep this user manual safe and in the vicinity of the device. All persons required to work with the device should be advised on where this manual is stored.

1.2 List of Notes

The notes supplied in this chapter provide information on the following.

- **Danger! / Warning!**
 - Possible hazard to life or health.
- **Caution**
 - Possible damage to property.
- **Important**
 - Possible damage to enclosure, device or associated equipment.
- **Information**
 - Notes on the optimum use of the device

Warning!	For ATEX applications, <u>ONLY</u> Duracell Plus MN1500 or Duracell Procell MN1500 cells may be used with the iCAM501U.
-----------------	--

Warning!	Any connection to the iCAM501 USB port must NOT be made in a hazardous area.
-----------------	---

Warning!	For Class1 Division 1 applications <u>NOTE THE REDUCED TEMPERATURE CLASSIFICATION</u> of T4 at 55°C when Duracell MN1500/ Duracell Procell MN1500 cells are used.
-----------------	--

Warning!	<u>For Class 1 Division 1 applications ONLY</u>, Duracell Procell PC1500 or Energizer E91 cells may additionally be used, <u>NOTE THE REDUCED TEMPERATURE CLASSIFICATION</u> of T3C at 50°C ambient when these cells are used (see Table 1).
-----------------	---

Warning!	The user shall NOT mix MN1500, PC1500 or E91 cells in ANY application
-----------------	--

Warning!	<u>For GROUP I applications ONLY</u>, the changing of the cells in the hazardous area or the transportation of spare cells into the hazardous area is NOT PERMITTED.
-----------------	---

Warning! For GROUP II applications ONLY, the user shall not carry more than a maximum of 2 spare Duracell Plus MN1500 or Duracell Procell MN1500 cells into the hazardous area. Precautions shall be taken to prevent short circuiting of un-protected cell terminals. Discharged cells shall be removed from the hazardous area.

Warning! For Class 1 Division 1 applications ONLY, the user shall not carry more than a maximum of 2 spare Duracell Plus MN1500, Duracell Procell MN1500/PC1500 or Energizer E91 cells into the hazardous area. Precautions shall be taken to prevent short circuiting of un-protected cell terminals. Discharged cells shall be removed from the hazardous area.

Warning! For GROUP II applications ONLY the rated ambient temperature range of the equipment is from -20°C to 60°C.

Warning! For GROUP I applications ONLY the rated ambient temperature range of the equipment is from 0°C to 60°C.

Warning! For Class 1 Division 1 applications ONLY the rated ambient temperature range of the equipment is from -20°C to 50 °C/55°C dependent on which cells are used (see Table 1).

Warning! If any damage to the iCAM501U is found which may invalidate the required safety minimum IP rating (IP54 for group I applications), (IP20 for group II and class 1 division 1 applications), the iCAM501U shall be removed from the hazardous area.

Important Any repairs or replacement of parts **MUST** be performed by the manufacturer or its nominated sub contractor or agent.

Important The iCAM501U contains no user serviceable parts. The main part of the enclosure must not be opened under any circumstances.

Application	Duracell Plus MN1500	Duracell Procell MN1500	Duracell Procell PC1500	Energizer E91
ATEX GROUP II	OK, T4 at 60°C	OK, T4 at 60°C	CANNOT BE USED	CANNOT BE USED
ATEX GROUP I	OK, T4 at 60°C	OK, T4 at 60°C	CANNOT BE USED	CANNOT BE USED
CLASS 1 DIVISION 1	OK, T4 at 55°C	OK, T4 at 55°C	OK, T3C at 50°C	OK, T3C at 50°C

Table 1 iCAM501U cell usage table

2 User Guide

2.1 Changing/Installing Batteries

To change or install the batteries in the iCAM501U turn the screw as indicated below to remove the cover

Warning!	For ATEX applications, <u>ONLY</u> Duracell Plus MN1500 or Duracell Procell MN1500 cells may be used with the iCAM501U.
-----------------	---

Warning!	For Class1 Division 1 applications <u>NOTE THE REDUCED TEMPERATURE CLASSIFICATION</u> of T4 at 55°C when Duracell MN1500/ Duracell Procell MN1500 cells are used.
-----------------	---

Warning!	<u>For Class 1 Division 1 applications ONLY</u> , Duracell Procell PC1500 or Energizer E91 cells may additionally be used, <u>NOTE THE REDUCED TEMPERATURE CLASSIFICATION</u> of T3C at 50°C ambient when these cells are used (see Table 1).
-----------------	---

Warning!	The user shall NOT mix MN1500, PC1500 or E91 cells in ANY application
-----------------	---

Warning!	<u>For GROUP I applications ONLY</u> , the changing of the cells in the hazardous area or the transportation of spare cells into the hazardous area is NOT PERMITTED.
-----------------	---

Warning!	<u>For GROUP II applications ONLY</u> , the user shall not carry more than a maximum of 2 spare Duracell Plus MN1500 or Duracell Procell MN1500 cells into the hazardous area. Precautions shall be taken to prevent short circuiting of un-protected cell terminals. Discharged cells shall be removed from the hazardous area.
-----------------	--



Use a coin to turn the screw anti-clockwise, the lid should then pop up.

To close it again, turn the coin clockwise, the screw should click into place once correctly seated.

Install the batteries in the correct orientation (indicated on the enclosure) and close the lid again.

2.2 Preparing for first use

The iCAM501U is shipped with a protective film fitted to the front and rear windows. This should be carefully removed before use.

The iCAM501U may be used with the protective rubber overboot supplied. This fits over the camera and provides additional impact resistance. Only the rubber overboot supplied by Extronics should be used as it is made from electrostatically-dissipative material.



2.3 Powering On / Off

Information The iCAM501U must be fully powered on before plugging a USB cable into the camera or to take a picture. This will be indicated when the green LED has stopped flashing.



Press and hold the “FLASH” and “RECORD” buttons simultaneously until the “ON” LED starts to flash green.

Green LED will flash rapidly for ~10 seconds while the camera boots. The Blue and Red LED will flash briefly during boot up. The Green LED then goes solid when ready for operation. If the green LED flashes slowly after booting, this indicates a low battery level.



The diagrams above show how to power on the iCAM501U. The same procedure is required to turn the iCAM501U off. Once it is turned off no LED's should be lit.

2.4 Setting Time and Date of the iCAM501U

The iCAM501U has an internal clock which is used to time code the JPEG file with information on when a picture and audio file was taken. The internal clock will have been set to GMT when the camera was manufactured. However, if it has been stored for a significant time without batteries, the internal clock may need to be set when the camera is first used.. The time and date must be set using a PC via the USB interface.

2.5 Taking a picture

There are a few different options available when taking a picture:

- A picture can be taken with no flash and no audio recording
- A picture can be taken with a flash to allow a good picture to be taken in low light conditions.
- A picture can be taken and an audio recording taken after the picture has been taken to provide an audio record for the picture.
- Or a picture can be taken with a flash and also create an audio recording.

Once a picture has been taken the LEDs and the buzzer are used to indicate if a good picture has been taken or not. For more details, the latest full iCAM501U manual can be found on the Extronics website at www.extronics.com

2.5.1 Taking a picture

Green LED will flash rapidly when picture is being taken. Ensure you keep your hand still. See page 10/11 for details of LED status codes



Press and hold trigger button until green LED starts flashing rapidly, wait for green LED to stop flashing before moving

2.5.2 Enabling the Flash

Once the flash button is pressed the red LED will start to flash, after some seconds the LED will become solid indicating the flash has charged and is ready for use. The green LED may also flash slowly if the battery level is low



Press the “FLASH” button to enable the flash feature of the camera.



To take a picture move your eye to the view finder and position the camera so that you can see what it is you would like to take a picture of, the point of interest should be at least 30cm from the lens. The reticule can be used to frame the image you want to capture. Note that the actual picture is about 15% larger either side of the actual viewfinder image.

Press and hold the large button (indicated as the “Picture Taking Button” above). The green ‘ON’ LED will then flash to indicate the picture taking process is active. Keep the camera as still as possible until the green LED has stopped flashing. Once the camera has taken a picture the 3 LEDs will flash in a sequence to let you know whether the picture taken was of a good quality (Table 2) or poor quality (Table 3). Once this occurs you can release the button unless you wish to create a voice recording (see below for more details). Note that if you are not making a voice recording it is possible to just press the picture taking button momentarily if preferred.

2.5.3 Enabling the Audio Recording Feature



Press the “RECORD” button to enable the recording feature of the camera.

Once the recording feature is enabled the blue LED will turn on indicating it is ready for use.



Press and HOLD trigger button, WAIT until blue LED begins to flash, then record audio and release trigger button when finished

Sequence	LED 1	LED 2	LED 3
1			
2	Off	Off	Off
3			
4	Off	Off	Off
5			
6	Off	Off	Off

Table 2 LED indication of good image

Sequence	LED 1	LED 2	LED 3
1	Off	Off	
2	Off		Off
3		Off	Off
4	Off	Off	
5	Off		Off
6		Off	Off
7	Off	Off	
8	Off		Off
9		Off	Off

Table 3 LED indication of poor image

The iCAM501U will still store the picture even if it is flagged up as being of poor quality. The reason for this is that factors such as the lighting conditions may mean it is not possible to get a perfect picture and a poor one is better than no picture. However it is strongly recommended that another picture is taken.

If the flash is required when taking a picture in low lighting conditions, turn the flash on as indicated in the above section and wait until the red LED stays constantly on. Note the flash can take up to 20 seconds to fully charge when the batteries are part used. Once the red LED has turned solid the iCAM501U is then ready to take a picture in the same way as if the flash was not enabled (the flash will automatically trigger when the picture is being taken).

2.5.4 Image blur analysis feature

The iCAM501U firmware has an additional image blur analysis feature. Images are analysed for characteristics of blurring, and given a score, which is in turn compared with a threshold based on the average light level in the image. Good or bad images are indicated using the LED sequence previously described in Table 2 and Table 3.

However, the reliability of the image analysis function is dependent on the nature of the scene being photographed. Images which contain little or no details such as edges (for example a blank wall) may be indicated as blurred when they are in-fact acceptable. Therefore the user should bear this limitation in mind when taking pictures, and it is suggested that users should take some practice shots to get a 'feel' for the way in which this software behaves.

Note that the iCAM501U also has an anti-shake function. It takes four pictures and then selects the best quality one to save to the flash memory. This is the reason that the flash fires 4 times. This operates independently of the image blur analysis feature, which examines the best of the 4 images taken.

2.5.5 Variable flash brightness

The iCAM501U firmware has an additional variable flash brightness feature. The purpose of this feature is to reduce the incidence of over-exposure of images when close-up shots of reflective surfaces are taken with the flash.

When the flash is enabled, and a shot is triggered, a short low-brightness 'ranging' flash pulse will firstly be seen. Immediately followed by the four flash pulses previously described, or a single continuous 'torch'. The iCAM501U software rapidly analyses the reflected light level from the ranging pulse, and adjusts the brightness of the flash accordingly. However, this system is not infallible, and so the flash may still be too bright under some circumstances. The camera will indicate a bad image if the light level is extremely high, but if you are trying to photograph text close-up on a reflective rating plate for example, it is strongly recommended to use ambient lighting where possible in such applications.

2.5.6 Picture Time Stamping

The iCAM501U has an additional feature which will 'time stamp' the pictures as they are taken. Once a picture is taken the iCAM501U will stamp the current time and date in an area on the bottom-left of the picture to allow photographs to be easily identifiable.

It should be noted that once a good/bad image has been indicated, there will be a 2 second delay before an audio recording can begin or another shot can be triggered.

2.5.7 Error Codes

- If the green LED continually flashes slowly once booted, this means that the batteries are running low and will soon need replacing.
- If the iCAM501U has all 3 LEDs constantly flashing it means that it is in an unrecoverable state. The only way to get it out of this state is to remove the batteries and then replace them.

2.6 Installing the iCAM501U With an Operating System

This section will provide details on how to install the iCAM501U to be used with a supported host operating system. Although the iCAM501U supports various Linux versions with the PTP library installed and Mac OsX 10.x this manual only focuses on Windows operating systems. The iCAM501U is PTP compliant so should work in the same way as many other digital cameras do with various operating systems.

The iCAM501U must be powered on and the green status LED must be solid before connecting to a host operating system, otherwise the operating system will not establish communication with the camera. Once the green LED has become solid connect the iCAM501U via a USB cable to the host computer.

2.6.1 Windows XP

Once the iCAM501U has been connected to a machine running Windows XP, the drivers and software required to establish communication between them will automatically be installed. A “balloon” icon will show up in the taskbar stating that “Your new hardware is installed and ready to use”.



If the Windows Autorun feature is enabled (it is enabled by default) a window like the one below will be shown. By clicking on any of the listed programs and then clicking ok the files currently on the camera will be displayed in the chosen application. By clicking cancel nothing will open.



Information on customizing the way the iCAM501U interacts with Windows XP can be found in section 2.8

2.6.2 Windows Vista / Windows 7

Once the iCAM501U has been connected to a machine running Windows Vista or Windows 7, the drivers and software required to establish communication between them will automatically be installed. A “balloon” icon will show up like the one pictured below



If the Windows Autoplay feature is enabled (it is enabled by default) a window like the one below will be shown. By clicking on any of the listed options and then clicking ok the files currently on the camera will be displayed in the chosen application. By clicking the close button nothing will happen.



Information on customizing the way the iCAM501U interacts with Windows Vista/Windows 7 can be found in section 2.9

2.7 Setting Time and Date of the iCAM501U

The iCAM501U has an internal clock which is used to time code the JPEG file with information on when a picture and audio file was taken. The internal clock will need to be set when the camera is first used or when the batteries have been flat for an extended period of time. If the time and date is not set the JPEG files will have an incorrect time code embedded into the file.

2.7.1 Setting Time and Date in Windows XP

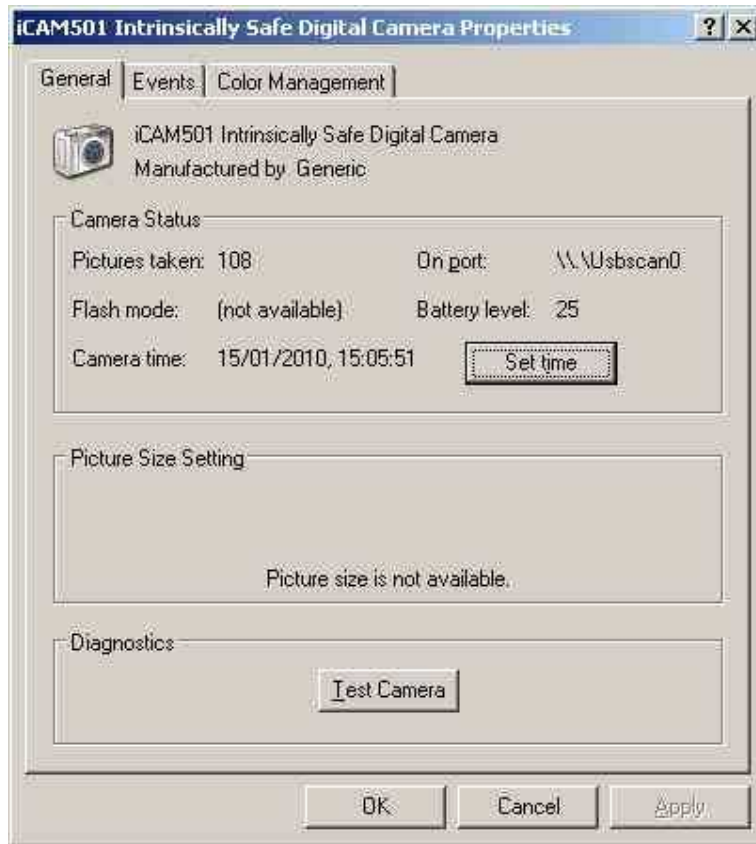
Attach the iCAM501U to the machine running Windows XP once the green status LED has turned solid. Navigate to my computer where an icon for the iCAM501U will be displayed as shown below. Right click on the iCAM501U icon and click properties.



When the camera is first plugged in click properties and the following display is likely to be shown.



If there are large numbers of pictures on the iCAM501U this may take some minutes as it will download thumbnails for the pictures when it is first plugged in. If it is taking an excessive amount of time try unplugging the USB cable and then reconnecting the device.



Now to set the time, simply click the set time button, it will then synchronize with the current Windows system time, you must therefore ensure that the Windows system time is also set correctly.

2.7.2 Setting Time and Date in Windows Vista

It is currently not possible to set the time and date of the iCAM501U using Windows Vista. This is due to Microsoft changing its PTP driver from that that used with Windows XP. The driver does still allow files to be downloaded from the iCAM501U.

2.7.3 Setting Time and Date in Windows 7

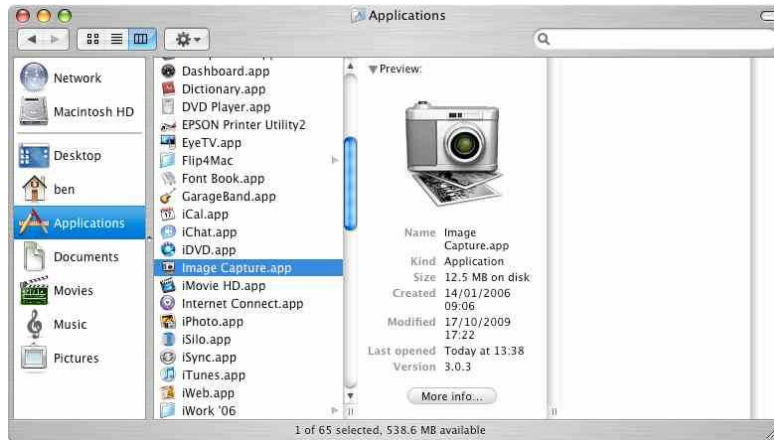
As with Windows Vista the PTP driver written by Microsoft does not allow the time of the camera to be set.

If you are running Windows 7 Professional, Enterprise or ultimate it is possible to set the iCAM501U by downloading and using Windows XP mode. Please download document 328303 from the iCAM501U page at www.extronics.com. This will detail how to download, install and use Windows XP mode.

2.7.4 Setting Time and Date in Apple OSX

PLEASE NOTE: THE iCAM501U is NOT COMPATIBLE WITH APPLE OSX BY DEFAULT. CONTACT EXTRONICS FOR A SPECIAL OSX-COMPATIBLE SOFTWARE RELEASE

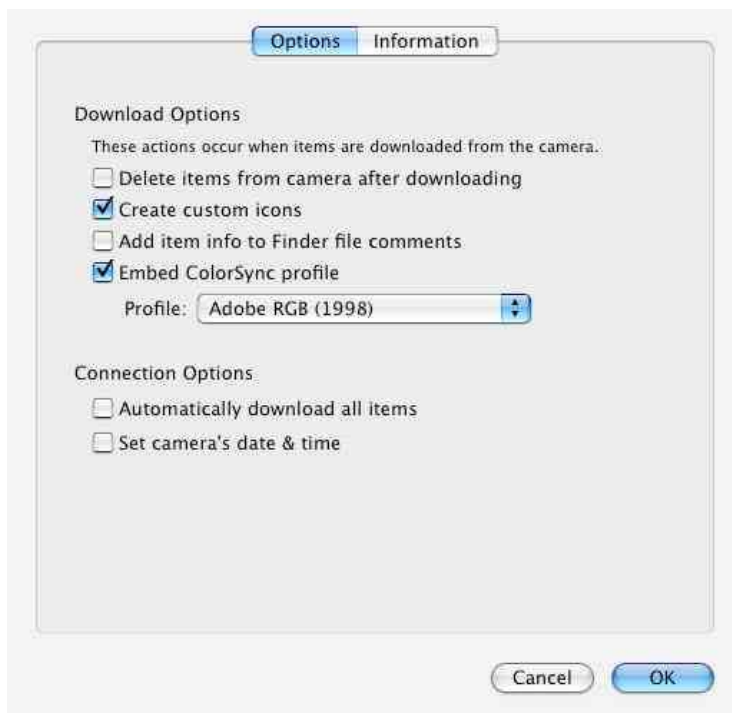
To set the time and date using apples OSX navigate to finder->applications and open image capture.



Click options...

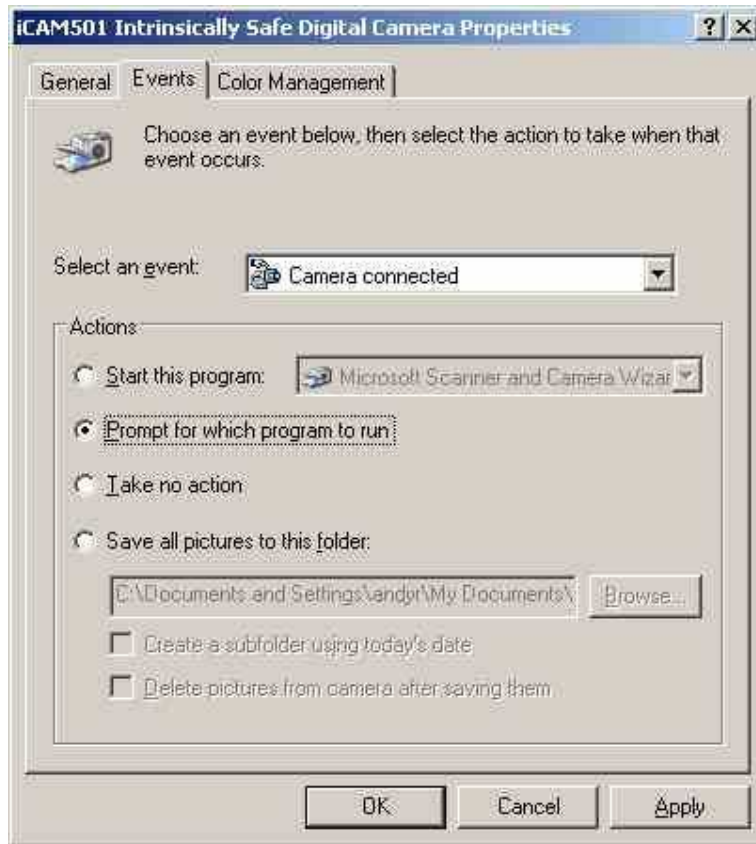


Then click “set camera’s date and time”. Now when the iCAM501U is connected via USB to the system, the time and date will automatically be synchronized.



2.8 Configuring How the Camera Behaves With Windows XP

When the iCAM501U is first plugged into a Windows XP machine you will be prompted to select an application to use to download the files from the Camera. This default action can be changed using the same method as used for setting the time, and then selecting the events tab.



Choose from the following options:

Start this program: This allows you to tell Windows to automatically load a certain application when the camera is plugged in. This list may vary depending on which programs are installed. The default program should be “Microsoft Scanner and Camera Wizard”. This is the built in camera managing software included in Windows.

Prompt for which program to run: This will make Windows display a list of programs which can manage the iCAM501U every time the iCAM501U is plugged into a PC

Take no action: With this setting Windows will not prompt the user to take any actions when the iCAM501U is plugged in.

Save all pictures to this folder: This setting will allow the user to set a directory where all pictures and audio files are automatically downloaded to when the iCAM501U is plugged into the PC. You also have the option to have all files downloaded to a folder with today’s date and to delete the files from the camera once downloaded.

2.9 Configuring How the Camera Behaves With Windows Vista/Windows 7

When the iCAM501U is first plugged into a Windows Vista or Windows 7 machine you will be prompted to select an application to use to download the files from the Camera. This default action can be changed in the AutoPlay popup menu as shown below. It is possible to completely turn off the AutoPlay feature by selecting the “View

more AutoPlay options in Control Panel". From there you can disable the AutoPlay feature for all devices or just the iCAM501U.

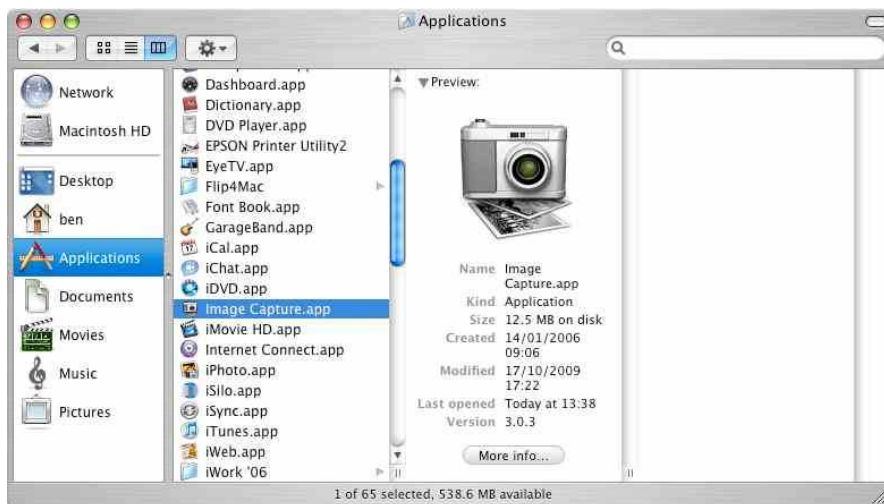
More information on downloading files can be found in section **Error! Reference source not found.**

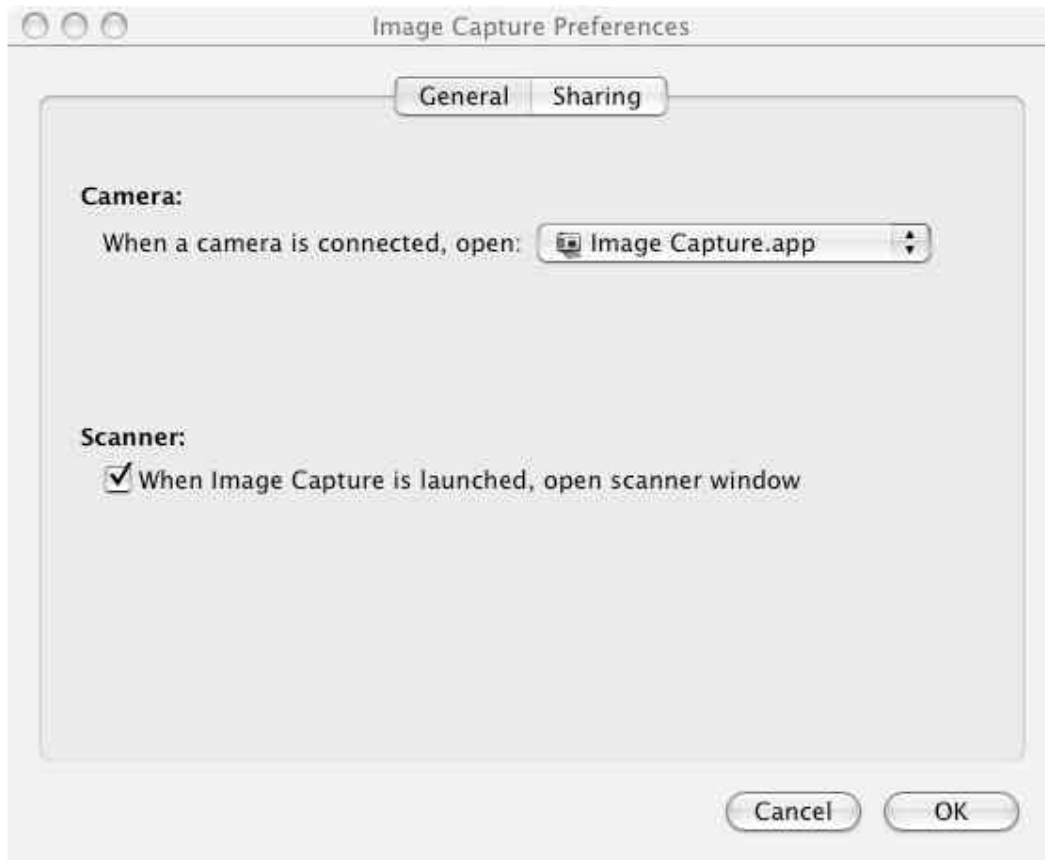


2.10 Configuring How the Camera Behaves With Apple OSx

When the iCAM501U is first plugged in iPhoto will automatically start. iPhoto currently doesn't allow the audio files on the camera to be downloaded, only the pictures.

To change what the camera does when it is first plugged in close iPhoto, click finder->applications->image capture and click on preferences

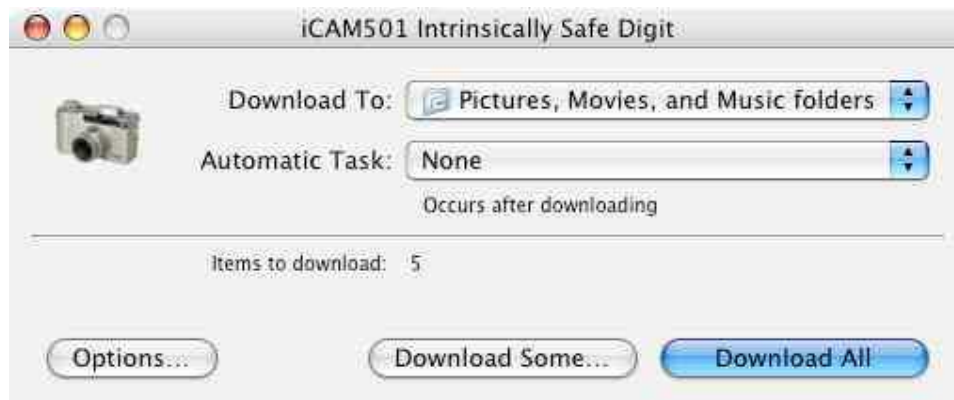




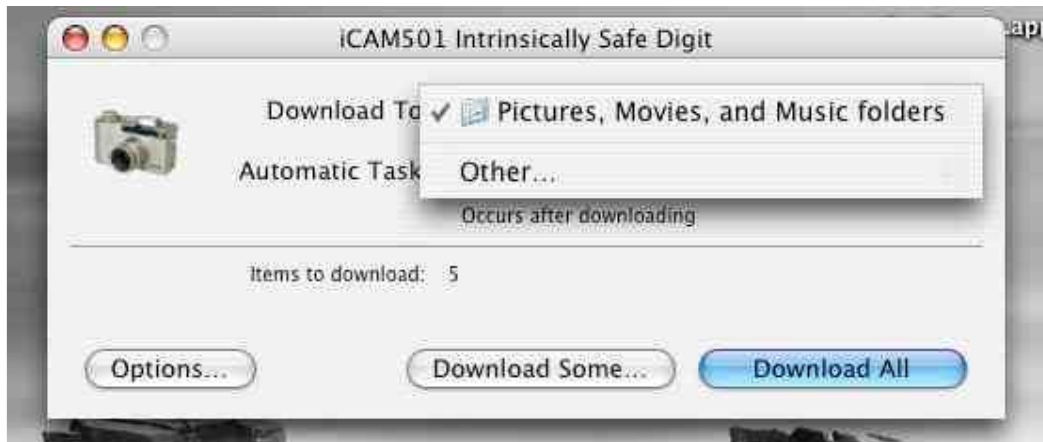
Click on "When a camera is connected open:" and select image capture



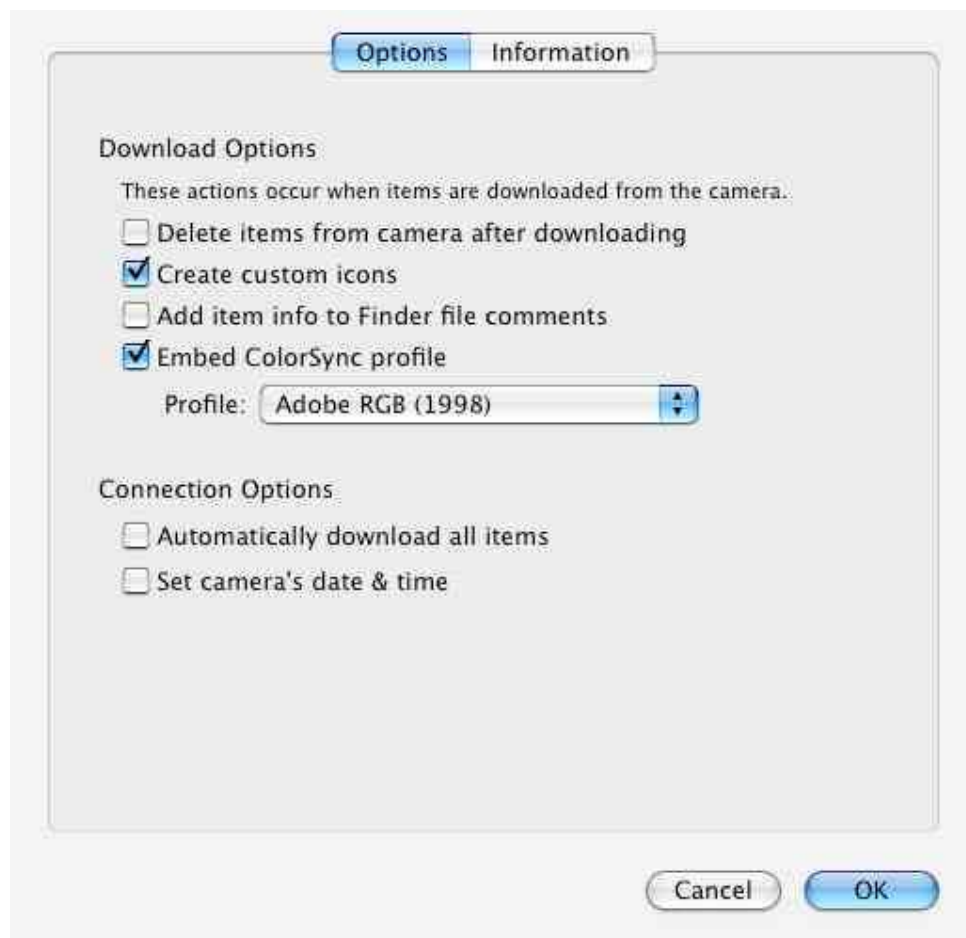
Now when the iCAM501U is plugged in the following windows will open



Select what you wish to download from the drop down box, or select an automatic task.



Click on options.... to set further options for the iCAM501U.



2.11 Compatibility of the iCAM501U LED flash with optical flame detection equipment

The flash LEDs fitted to the iCAM501U operate with a peak wavelength of 440nm (with a secondary lower peak at 550nm). Therefore the majority of the light emitted is towards the blue end of the visible spectrum.

Typical UV/IR flame detectors operate in the 180-260nm UV range and the 2000-4000nm IR range. Consequently the majority of the energy emitted by the flash on the iCAM501U is well outside of the operating range of typical flame detectors.

However, Extronics have not done any testing of the iCAM501U with optical flame detectors, so we cannot guarantee compatibility with any specific model of detector.

If you do find that particular sensors may be activated by the flash, it can be turned off by the user with the press of a key as per the operating instructions in 2.5.2. In addition, if you require the flash to be completely disabled for a particular camera, Extronics can send you a field-installable software version which will disable the flash (this of course can be reversed as desired by re-installing the normal software version, again in the field).

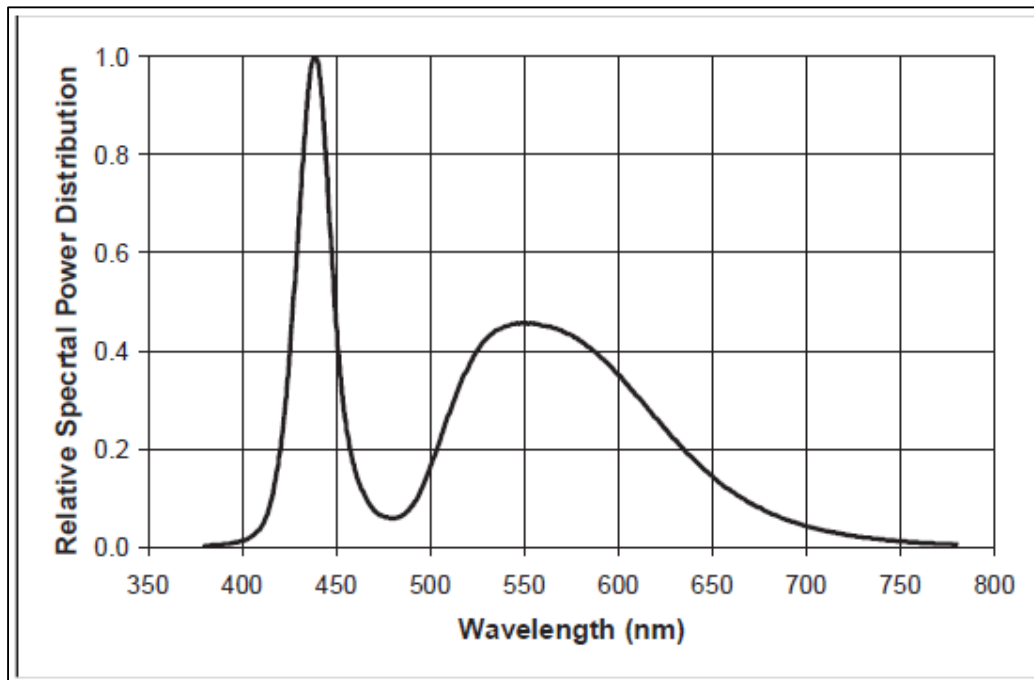


Figure 1 Flash LED output spectrum

3 Structure and Function

3.1 Intended Purpose Usage

Important	Before setting the unit to work, read the technical documentation carefully.
------------------	---

Important	The latest version of the technical documentation or the corresponding technical supplements is valid in each case.
------------------	--

The iCAM501U is built using modern components and is extremely reliable in operation; however it must only be used for its intended purpose. Please note that the intended purpose also includes compliance with the instructions issued by the manufacturer for installation, setting up and service.

Any other use is regarded as conflicting with the intended purpose. The manufacturer is not liable for any subsequent damage resulting from such inadmissible use. The user bears the sole risk in such cases.

3.2 Transportation and Storage

All iCAM501U devices must be so transported and stored that they are not subjected to any excessive mechanical stresses.

3.3 Authorized Persons

Only persons trained for the purpose are authorized to handle the iCAM501U; they must be familiar with the unit and must be aware of the regulation and provisions required for explosion protection as well as the relevant accident prevention regulations.

3.4 Cleaning and Maintenance

The iCAM501U and all its components require no maintenance. All work on the iCAM501U by personnel who are not expressly qualified for such activities will cause the Ex approval and the guarantee to become void.

3.5 Safety Precautions

Important For the installation, maintenance and cleaning of the units, it is absolutely necessary to observe the applicable regulations and provisions concerned with explosion protection (EN 60079-0, EN 60079-14) as well as the Accident Prevention Regulations.

3.6 Cleaning and Maintenance Intervals

The cleaning intervals depend on the environment where the system is installed.

3.7 Aggressive substances and environments

The iCAM501U is not designed to come into contact with aggressive substances or environments, please be aware that additional protection may be required.

3.8 Exposure to external stresses

The iCAM501U is not designed to be subjected to excessive stresses e.g. vibration, heat, impact. Additional protection is required to protect against these external stresses.

The iCAM501U will require additional protection if it is used in a location where it may be subjected to damage.

The iCAM501U may be fitted with the optional antistatic rubber boot accessory supplied by Extronics. However, this does not guarantee any additional impact resistance, and due care must still be taken to avoid damage to the unit, and to inspect it before taking into a hazardous area.

4 Technical Data

Certification Number	ITS09ATEX26868X, IECEx ITS 09.0027X, FM 3042108/3042108C
ATEX Certification	II 1 G Ex ia IIB T4 Ga, II 2 G Ex ia IIC T4 Gb, -20°C ≤ Ta ≤ +60°C I M1 Ex ia I Ma 0°C ≤ Ta ≤ +60°C
IECEx Certification	II 1 G Ex ia IIB T4 Ga, II 2 G Ex ia IIC T4 Gb, -20°C ≤ Ta ≤ +60°C Ex ia I Ma 0°C ≤ Ta ≤ +60°C
FM Certification	Intrinsically Safe for Class 1, Division 1, Groups A,B,C,D T4/T3C -20°C ≤ Ta ≤ 55/50°C (USA and Canada)
Compliance	EMC: EN 55022 1998 class B, EN 55024 1999 LV: EN 60950 2002 FCC: FCC: Class A device, compliance through verification route
Dimensions	132mm x 32mm x 22mm (5.20" x 1.26" x 0.87")
IP Rating	IP65
Operating Temperature	Group II -20°C to +60°C / Group I 0°C to +60°C
Weight	Approx 200g including batteries
Housing	Injection moulded anti static plastic housing
Relative humidity	95% RH non condensing
Power	2 x Alkaline AA batteries, refer to ATEX/FM Certificates for details on range of approved batteries. Batteries may not be carried or changed in Group I hazardous areas.
Memory	On board 1Gbyte NAND Flash (holds approx 5,000 JPEG images without any audio recording and additional 960Kbytes per min for audio)
Image	3.1 Mega-Pixel (2048 x 1536 resolution)
Lens	Fixed focus 1/4" format lens in plastic holder
Focal Distance	30 cm to infinity
View Finder	Two element optical view finder
Power Modes	Operate and auto power-down (after 3 mins)
Battery Life	Up to 800 shots without flash and up to 150 shots with flash taken one after the other. 310 shots as per the CIPA DC-002 standard (mixed mode shots with and without flash) Note it is very difficult to be precise about exact numbers as there are many factors that can influence this such as the ambient temperature, how long the camera is powered up, number of voice recordings made and the number and length of time it is connected to a PC for transferring picture and voice data.
Connectivity	USB 1.1 via mini-USB socket for use in the safe area only. Certified for direct connection to a PC without requiring an external protection barrier
OS Support	PTP imaging device in Windows XP/Vista/7, Mac OsX 10.x and most versions of Linux. USB firmware upgrade utility for Windows XP/Vista/7 only.
Flash	4 LED flash giving 131 lux.seconds of energy at 67ms exposure
Audio recording format	wav
Image format	jpeg
Time and Date	Time and date stamping of stored images and filenames Time and date set via Picture Transfer Protocol (PTP) automatically

5 EC Declaration of Conformity



Hazardous Area Specialists

EC Declaration of Conformity

Extronics Ltd, 1 Dalton Way, Midpoint 18, Middlewich, CW10 0HU

Declare under sole responsibility that the product,

iCAM501U

To which this declaration relates is in accordance with the provision of the following directives

94/9/EC	Equipment and protective systems intended for use in potentially explosive atmospheres
2004/108/EC	CE marking for Electromagnetic Compatibility Directive
2002/95/EC	Restriction of the use of certain hazardous substances in
2002/96/EC	Waste Electrical and Electronic Equipment Directive (WEEE) electrical and electronic equipment (RoHS)

EC type Examination Certificate

ITS 09ATEX 26868X Issue 3

Provisions of Directive fulfilled by the equipment

II 1 G Ex ia IIB T4 Ga -20°C ≤ Ta ≤ 60°C
II 2 G Ex ia IIC T4 Gb -20°C ≤ Ta ≤ 60°C
I M1 Ex ia I Ma 0°C ≤ Ta ≤ 60°C

Notified Body for EC Type Examination

Intertek, 1712, ITS, Leatherhead UK

Notified Body for production

SIRA, 0518, Sira Chester UK

And is in conformity with the following standards or other nominative documents

EN60079-0:2009	Electrical apparatus for potentially explosive gas atmospheres – General requirements
EN60079-11:2007	Electrical apparatus for potentially explosive gas atmospheres – Equipment protection by intrinsic safety 'i'
EN60079-26:2007	Electrical apparatus for potentially explosive gas atmospheres – Equipment with equipment protection level (EPL) Ga
EN55022:2006 (+A1:2007)	Information technology equipment. Radio disturbance characteristics. Limits and methods of measurement
EN55024:1998(+A2:2003)	Information technology equipment. Immunity characteristics. Limits and methods of measurement

Signed

Date : 20/10/2011

Ben Seaby
Development Manager

6 FM Class 1 Division 1 USA Certificate of Compliance



FM Approvals
1151 Boston Providence Turnpike
P.O. Box 9102 Norwood, MA 02062 USA
T: 781 762 4300 F: 781-762-9375 www.fmapprovals.com

CERTIFICATE OF COMPLIANCE

HAZARDOUS (CLASSIFIED) LOCATION ELECTRICAL EQUIPMENT

This certificate is issued for the following equipment:

iCAM501U Digital Camera

IS / I / 1 / ABCD - 331684

Special Condition for use;

1. Must be used with Battery specified in the Operations Manual 331684
2. Temperature code is T4, Ta=-20°C to 55°C with Duracell Plus or Procell MN1500 batteries or T3C, Ta=-20°C to 50°C with Duracell Procell PC1500 or Energizer E91 batteries.

Equipment Ratings:

Intrinsically Safe for Class I, Division 1, Groups A, B, C, and D hazardous (classified) locations.

FM Approved for:

Extronics Ltd
1 Dalton Way, Midpoint 18, Middlewich
Cheshire, CW10 0HU, UK



This certifies that the equipment described has been found to comply with the following Approval Standards and other documents:

Class 3600	1998
Class 3610	2010

Original Project ID: 3042108

Approval Granted: December 7, 2011

Subsequent Revision Reports / Date Approval Amended

Report Number	Date	Report Number	Date
---------------	------	---------------	------

FM Approvals LLC


J. E. Marquedant
Group Manager, Electrical

7 December 2011
Date

7 FM Class 1 Division 1 Canadian Certificate of Compliance



FM Approvals
1151 Boston Providence Turnpike
P.O. Box 9102 Norwood, MA 02062 USA
T: 781 762 4300 F: 781-762-9375 www.fmapprovals.com

CERTIFICATE OF COMPLIANCE

HAZARDOUS (CLASSIFIED) LOCATION ELECTRICAL EQUIPMENT

This certificate is issued for the following equipment:

iCAM501U Digital Camera

IS / I / 1 / ABCD - 331684

Special Condition for use;

1. Must be used with Battery specified in the Operations Manual 331684
2. Temperature code is T4, Ta=-20°C to 55°C with Duracell Plus or Procell MN1500 batteries or T3C, Ta=-20°C to 50°C with Duracell Procell PC1500 or Energizer E91 batteries.

Equipment Ratings:

Intrinsically Safe for Class I, Division 1, Groups A, B, C, and D hazardous (classified) locations.

FM Approved for:

Extronics Ltd
1 Dalton Way, Midpoint 18, Middlewich
Cheshire, CW10 0HU, UK



This certifies that the equipment described has been found to comply with the following Approval Standards and other documents:

C22.2 No. 157	2006
CAN/CSA E60079-0	2006
CAN/CSA-E60079-11	2006

Original Project ID: 3042108C

Approval Granted: December 7, 2011

Subsequent Revision Reports / Date Approval Amended

Report Number	Date	Report Number	Date
---------------	------	---------------	------

FM Approvals LLC

A handwritten signature in black ink, appearing to read "J. E. Marquedant".

J. E. Marquedant
Group Manager, Electrical

7 December 2011

Date

FM Approvals HLC 6/07

3042108C
Page 2 of 2

8 Revision History

Revision	Description	Initials	Date
1	Initial Release	BS	14/12/2011
2	Added USB connection note	AR	05/01/2012