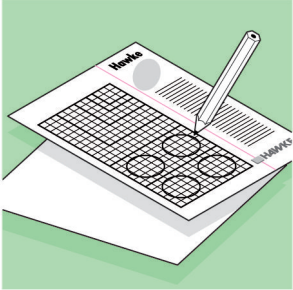


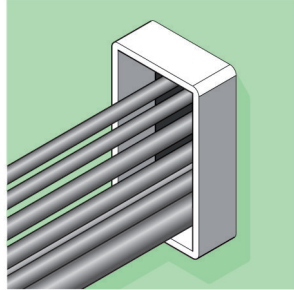
TRANSIT INSTALLATION GUIDE

Civil and Marine Transit System

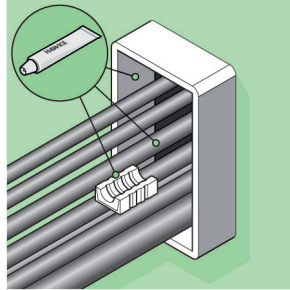
The following diagrams explain step by step how easy it is to install Hawke cable/pipe tolerant blocks into Civil or Marine Transit frames.



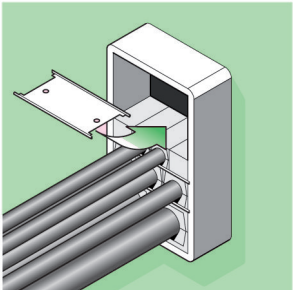
1 Draw up a Hawke Design Template to determine your cable/pipe layout.



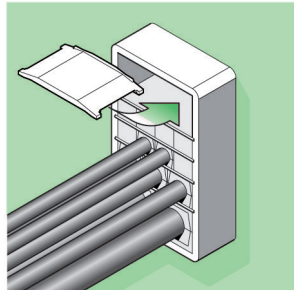
2 Make sure the frame is clean, then pull cables or pipes through, placing the largest at the bottom. (Note: Use open ended frame to fit around existing cables/pipes).



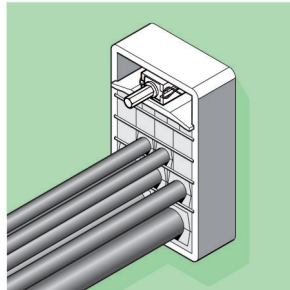
3 Lubricate the inside of the frame and all the insert blocks.



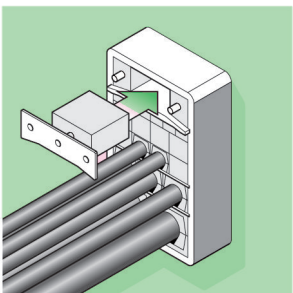
4 Begin packing the frame. A stayplate is inserted between each layer of insert blocks.



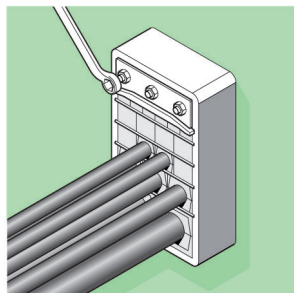
5 Insert the compression plate before the last row of blocks or earlier if required with additional stayplates.



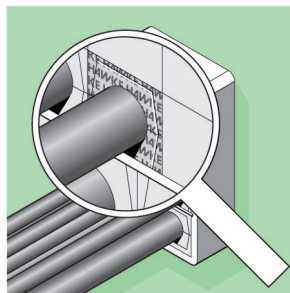
6 Pack the last row, insert the compression tool and tighten until there is sufficient room to fit the tapered end packers.



7 Insert two outside packing pieces then remove tool before fitting centre block.



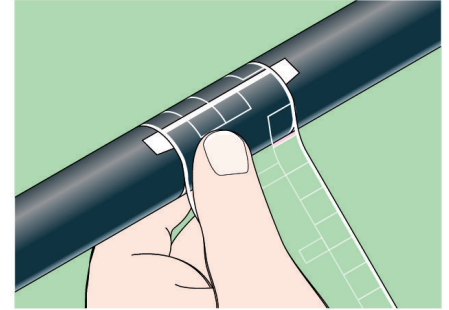
8 Tighten the nuts on the endpacking to compress and complete the seal. Approximately 10mm of thread should protrude on each bolt.



9 Hawke's unique colour coding system enables the installation to be visually inspected after completion and ensures correct matching of the block halves.

Note:
HF600 filler blocks must be installed with the faces moulded with 4 holes in vertical position

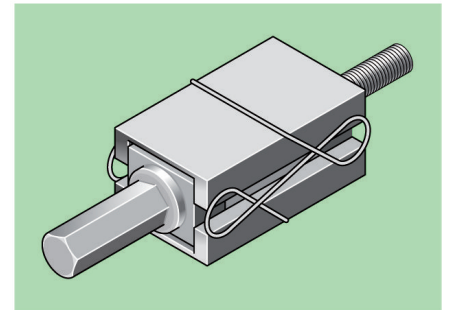
Hawke Transit System



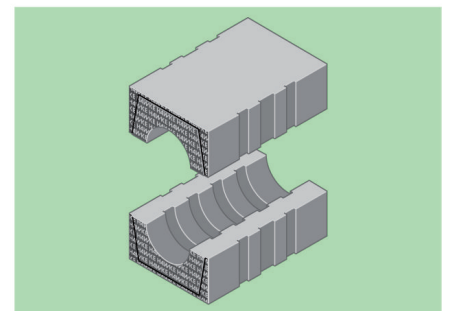
Hawke Cable/Pipe/Block Selection Gauge

1. Simply wrap the gauge tightly around the cable or pipe from the measurement line.
2. Reading along the measurement line will reveal the correct block size for the cable or pipe and identify it by colour code. e.g. 4022 RED

Where there is an overlap between two block sizes e.g. 6052 or 9053, either size can be selected to best use the available space in the transit frame.



Hawke Compression Tool
Hawke's unique Compression Tool. Simplifies the process of compressing tolerant blocks within X type frames and speeds installation considerably when compared to competitors methods.



Hawke Cable/Pipe Tolerant Blocks
Hawke's unique inspectable colour coded blocks ensure that the top and bottom half of each block has been correctly matched for size.