

# Introducing **NORMA** the **NEW** Ideal Homes from **Spelsberg**

We have introduced 14 new enclosures to the Spelsberg range, featuring clear and opaque lids.

The new standard housings in the Norma range are available in 2 materials

Polycarbonate and ABS versions complement the existing range of over 400 different housings, offering a comprehensive package from one source.

The Norma range combined with the spelsberg service makes for an unbeatable combination for a wide range of application needs.



## Technical Information on the **NORMA** Range

	NG PC (polycarbonate)	NG ABS
Temperature range	-35 to 60 C	-35 to 60 C
Maximum short term 1 Hour	80 C	80 C
Ingress Protection to EN 60529.DIN/VDE 0470-1	IP65	IP65
Impact Resistance to DIN.EN 50102/VDE 0470-1 part 100	IK08	IK07

## About the **NORMA** Range

- ABS & Polycarbonate
- IP65 ingress protection
- Grey & Transparent lids
- Smooth Walls
- Grey to RAL 7035
- Range of accessories
- Customisation & assembly

# Norma Range - IP65

Ideal Homes for electrical junctions and control equipment

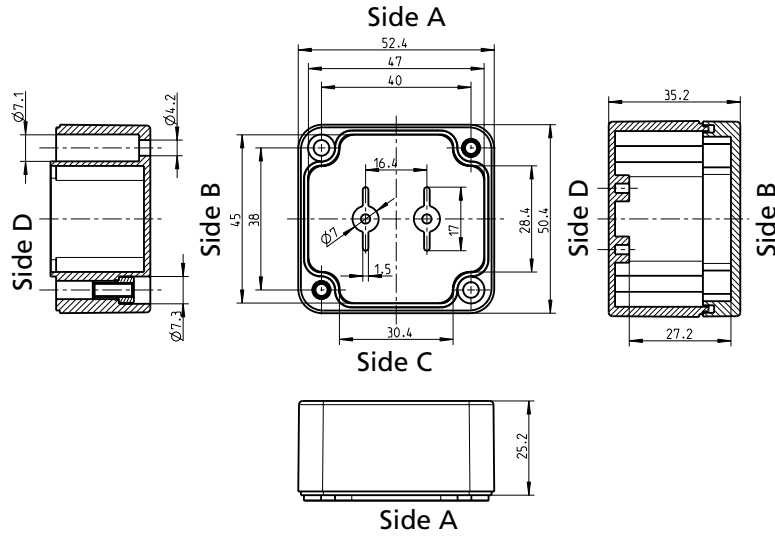


Grey Lid			Clear Lid				Mounting Plate		
Description	Material	Cat No.	Description	Material	Cat No.	Dimensions	Description	Material	Cat. No.
NG 55 – 4	Polycarbonate	148 401 01	NG 55 – 4	Polycarbonate	149 001 01	52x50x35	N/A	N/A	N/A
NG 55 – 4	ABS	118 401 01	NG 55 – 4	ABS	119 001 01	52x50x35	N/A	N/A	N/A
NG 75 – 4	Polycarbonate	148 402 01	NG 75 – 4	Polycarbonate	149 002 01	65x50x35	MPI-75	Paxolin	185 002 01
NG 75 – 4	ABS	118 402 01	NG 75 – 4	ABS	119 002 01	65x50x35	MPI-75	Paxolin	185 002 01
NG 88 – 6	Polycarbonate	148 403 01	NG 88 – 6	Polycarbonate	149 003 01	82x80x55	MPI-88	Paxolin	185 003 01
NG 88 – 6	ABS	118 403 01	NG 88 – 6	ABS	119 003 01	82x80x55	MPI-88	Paxolin	185 003 01
NG 88 – 9	Polycarbonate	148 903 01	NG 88 – 9	Polycarbonate	149 503 01	82x80x85	MPI-88	Paxolin	185 003 01
NG 88 – 9	ABS	118 903 01	NG 88 – 9	ABS	119 503 01	82x80x85	MPI-88	Paxolin	185 003 01
NG 1208 – 6	Polycarbonate	148 404 01	NG 1208 – 6	Polycarbonate	149 004 01	120x80x55	MPI-1208	Paxolin	185 004 01
NG 1208 – 6	ABS	118 404 01	NG 1208 – 6	ABS	119 004 01	120x80x55	MPI-1208	Paxolin	185 004 01
NG 1208 – 9	Polycarbonate	148 904 01	NG 1208 – 9	Polycarbonate	149 504 01	120x80x85	MPI-1208	Paxolin	185 004 01
NG 1208 – 9	ABS	118 904 01	NG 1208 – 9	ABS	119 504 01	120x80x85	MPI-1208	Paxolin	185 004 01
NG-1212 – 6	Polycarbonate	148 405 01	NG-1212 – 6	Polycarbonate	149 005 01	122x120x55	MPI-1212	Paxolin	185 005 01
NG-1212 – 6	ABS	118 405 01	NG-1212 – 6	ABS	119 005 01	122x120x55	MPI-1212	Paxolin	185 005 01
NG-1212 – 8	Polycarbonate	148 705 01	NG-1212 – 8	Polycarbonate	149 505 01	122x120x75	MPI-1212	Paxolin	185 005 01
NG-1212 – 8	ABS	118 705 01	NG-1212 – 8	ABS	119 505 01	122x120x75	MPI-1212	Paxolin	185 005 01
NG 1212 – 9	Polycarbonate	148 805 01	NG 1212 – 9	Polycarbonate	149 605 01	122x120x85	MPI-1212	Paxolin	185 005 01
NG 1212 – 9	ABS	118 805 01	NG 1212 – 9	ABS	119 605 01	122x120x85	MPI-1212	Paxolin	185 005 01
NG 1212 – 11	Polycarbonate	148 905 01	NG 1212 – 11	Polycarbonate	149 705 01	122x120x105	MPI-1212	Paxolin	185 005 01
NG 1212 – 11	ABS	118 905 01	NG 1212 – 11	ABS	119 705 01	122x120x105	MPI-1212	Paxolin	185 005 01
NG 1608 – 6	Polycarbonate	148 406 01	NG 1608 – 6	Polycarbonate	149 006 01	160x80x55	MPI-1608	Paxolin	185 006 01
NG 1608 – 6	ABS	118 406 01	NG 1608 – 6	ABS	119 006 01	160x80x55	MPI-1608	Paxolin	185 006 01
NG 1608 – 9	Polycarbonate	148 906 01	NG 1608 – 9	Polycarbonate	149 506 01	160x80x85	MPI-1608	Paxolin	185 006 01
NG 1608 – 9	ABS	118 906 01	NG 1608 – 9	ABS	119 506 01	160x80x85	MPI-1608	Paxolin	185 006 01
NG 1612 – 9	Polycarbonate	148 407 01	NG 1612 – 9	Polycarbonate	149 007 01	160x120x90	MPI-1612	Paxolin	185 007 01
NG 1612 – 9	ABS	118 407 01	NG 1612 – 9	ABS	119 007 01	160x120x90	MPI-1612	Paxolin	185 007 01
NG 2012 – 8	Polycarbonate	148 408 01	NG 2012 – 8	Polycarbonate	149 008 01	200x120x75	MPI-2012	Paxolin	185 008 01
NG 2012 – 8	ABS	118 408 01	NG 2012 – 8	ABS	119 008 01	200x120x75	MPI-2012	Paxolin	185 008 01
NG 2012 – 9	Polycarbonate	148 908 01	NG 2012 – 9	Polycarbonate	149 508 01	200x120x90	MPI-2012	Paxolin	185 008 01
NG 2012 – 9	ABS	118 908 01	NG 2012 – 9	ABS	119 508 01	200x120x90	MPI-2012	Paxolin	185 008 01
NG 2015 – 8	Polycarbonate	148 409 01	NG 2015 – 8	Polycarbonate	149 009 01	200x150x75	MPI-2015	Paxolin	185 009 01
NG 2015 – 8	ABS	118 409 01	NG 2015 – 8	ABS	119 009 01	200x150x75	MPI-2015	Paxolin	185 009 01
NG 2412 -10	Polycarbonate	148 410 01	NG 2412 -10	Polycarbonate	149 010 01	240x120x100	MPI-2412	Paxolin	185 010 01
NG 2412 -10	ABS	118 410 01	NG 2412 -10	ABS	119 010 01	240x120x100	MPI-2412	Paxolin	185 010 01
NG 2416 – 9	Polycarbonate	148 411 01	NG 2416 – 9	Polycarbonate	149 011 01	240x160x90	MPI-2416	Paxolin	185 011 01
NG 2416 – 9	ABS	118 411 01	NG 2416 – 9	ABS	119 011 01	240x160x90	MPI-2416	Paxolin	185 011 01
NG 2416-12	Polycarbonate	148 911 01	NG 2416-12	Polycarbonate	149 511 01	240x160x120	MPI-2416	Paxolin	185 011 01
NG 2416-12	ABS	118 911 01	NG 2416-12	ABS	119 511 01	240x160x120	MPI-2416	Paxolin	185 011 01
NG 2516 – 9	Polycarbonate	148 412 01	NG 2516 – 9	Polycarbonate	149 012 01	250x160x90	MPI-2516	Paxolin	185 014 12
NG 2516 – 9	ABS	118 412 01	NG 2516 – 9	ABS	119 012 01	250x160x90	MPI-2516	Paxolin	185 014 12
NG 2516-12	Polycarbonate	148 912 01	NG 2516-12	Polycarbonate	149 512 01	250x160x120	MPI-2516	Paxolin	185 014 01
NG 2516-12	ABS	118 912 01	NG 2516-12	ABS	119 512 01	250x160x120	MPI-2516	Paxolin	185 014 01
NG3023 – 9	Polycarbonate	148 413 01	NG3023 – 9	Polycarbonate	149 013 01	300x230x85	MPI-3023	Paxolin	185 012 01
NG3023 – 9	ABS	118 413 01	NG3023 – 9	ABS	119 013 01	300x230x85	MPI-3023	Paxolin	185 012 01
NG3023 – 11	Polycarbonate	148 913 01	NG3023 – 11	Polycarbonate	149 513 01	300x230x110	MPI-3023	Paxolin	185 012 01
NG3023 – 11	ABS	118 913 01	NG3023 – 11	ABS	119 513 01	300x230x110	MPI-3023	Paxolin	185 012 01
NG 3620-15	Polycarbonate	148 414 01	NG 3620-15	Polycarbonate	149 014 01	360x200x150	MPI-3620	Paxolin	185 013 01
NG 3620-15	ABS	118 414 01	NG 3620-15	ABS	119 014 01	360x200x150	MPI-3620	Paxolin	185 013 01

# Gland Hole Drilling Data

Type	With Mounting Plate			W/out Mounting Plate	
	M	A/C	B/D	A/C	B/D
NG 55	12	-	-	1	1
	16	-	-	-	-
	20	-	-	-	-
	25	-	-	-	-
	32	-	-	-	-
	40	-	-	-	-
	50	-	-	-	-
NG 88-6	12	2	1	3	1
	16	1	1	1	1
	20	-	-	1	1
	25	-	-	-	-
	32	-	-	-	-
	40	-	-	-	-
	50	-	-	-	-
NG 1208-6	12	4	1	5	1
	16	3	1	3	1
	20	-	-	2	1
	25	-	-	-	-
	32	-	-	-	-
	40	-	-	-	-
	50	-	-	-	-
NG 1212-6	12	4	3	4	3
	16	3	2	3	2
NG1212-8	20	-	-	2	2
	25	-	-	-	-
	32	-	-	-	-
	40	-	-	-	-
	50	-	-	-	-
NG 1608-6	12	6	1	6	1
	16	4	1	4	1
	20	-	-	4	1
	25	-	-	-	-
	32	-	-	-	-
	40	-	-	-	-
	50	-	-	-	-
NG 1612	12	12	6	12	7
	16	5	3	10	5
	20	4	2	5	3
	25	3	1	3	1
	32	-	-	2	1
	40	-	-	-	-
	50	-	-	-	-
NG 2015	12	16	8	16	8
	16	6	3	12	6
	20	5	3	5	3
	25	4	2	4	2
	32	3	2	3	2
	40	-	-	-	-
	50	-	-	-	-
NG 2416	12	24	15	24	15
	16	12	8	12	8
	20	12	6	12	6
	25	4	2	6	4
	32	4	2	4	2
	40	2	1	2	1
	50	-	-	2	1
NG 3023	12	24	16	24	16
	16	8	7	16	9
	20	8	5	8	7
	25	6	4	6	5
	32	-	-	4	3
	40	-	-	-	-
	50	-	-	-	-

Type	With Mounting Plate			W/out Mounting Plate	
	M	A/C	B/D	A/C	B/D
NG 75	12	-	-	1	1
	16	-	-	-	-
	20	-	-	-	-
	25	-	-	-	-
	32	-	-	-	-
	40	-	-	-	-
	50	-	-	-	-
NG 88-9	12	5	2	6	3
	16	2	2	3	2
	20	1	1	2	2
	25	1	-	1	-
	32	1	-	1	-
	40	-	-	-	-
	50	-	-	-	-
NG 1208-9	12	8	2	10	3
	16	6	2	6	2
	20	3	1	4	2
	25	2	-	3	-
	32	1	-	1	-
	40	1	-	1	-
	50	-	-	-	-
NG 1212-9	12	8	6	11	9
	16	6	4	6	5
NG 1212-11	20	3	3	5	4
	25	2	2	3	2
	32	1	1	2	1
	40	1	1	1	1
	50	-	-	-	-
NG 1608-9	12	12	2	16	3
	16	8	2	8	2
	20	4	1	8	2
	25	3	-	4	-
	32	2	-	2	-
	40	-	-	2	-
	50	-	-	-	-
NG 2012	12	16	6	16	6
	16	6	2	12	4
	20	5	2	6	2
	25	4	1	4	1
	32	3	1	3	1
	40	-	-	-	-
	50	-	-	-	-
NG 2412	12	30	9	30	9
	16	16	4	16	4
	20	12	4	12	4
	25	5	2	7	2
	32	4	1	4	1
	40	3	1	3	1
	50	-	-	3	1
NG 2516	12	16	10	24	15
	16	12	8	12	8
	20	6	4	12	6
	25	4	3	6	3
	32	4	2	4	2
	40	2	1	2	1
	50	-	-	2	1
NG 3620	12	42	18	56	24
	16	30	10	32	15
	20	16	8	22	12
	25	16	6	16	6
	32	6	3	8	3
	40	4	2	4	2
	50	4	2	4	2



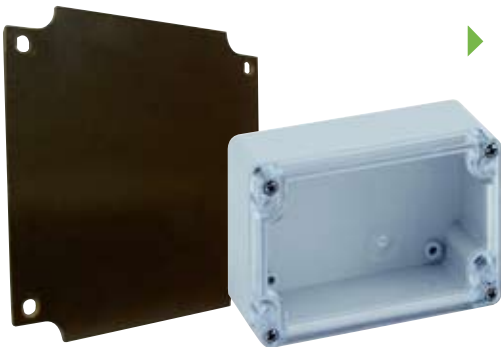
## MOUNTING FEET



Product Code: 184 001 01

Mounting Feet have the same product code. Except they can not be fitted to: Type NG 55-4, NG 75-4 and NG 3620

## MOUNTING PLATE DATA



## BOX HINGES



Product Code: 180 001 01

Hinges have the same product code. Except they can not be fitted to: Type NG 55-4, NG 75-4 and NG 3620

				Mounting Plates													
Length	Width	Height	Type	185 002 01	185 003 01	185 004 01	185 005 01	185 006 01	185 007 01	185 008 01	185 010 01	185 009 01	185 011 01	185 014 01	185 012 01	185 013 01	
mm	mm	mm	Type	NG MPI-75	NG MPI-88	NG MPI-1208	NG MPI-1212	NG MPI-1608	NG MPI-1612	NG MPI-2012	NG MPI-2412	NG MPI-2015	NG MPI-2416	NG MPI-2516	NG MPI-3023	NG MPI-3620	
52	50	35	NG PC 55-4	-	-	-	-	-	-	-	-	-	-	-	-	-	
65		35	NG PC 75-4	x	-	-	-	-	-	-	-	-	-	-	-	-	
82	80	55	NG PC 88-6	-	x	-	-	-	-	-	-	-	-	-	-	-	
		85	NG PC 88-9	-	x	-	-	-	-	-	-	-	-	-	-	-	
120	80	55	NG PC 1208-6	-	-	x	-	-	-	-	-	-	-	-	-	-	
		85	NG PC 1208-9	-	-	x	-	-	-	-	-	-	-	-	-	-	
122	120	55	NG PC 1212-6	-	-	-	x	-	-	-	-	-	-	-	-	-	
		75	NG PC 1212-8	-	-	-	x	-	-	-	-	-	-	-	-	-	
		85	NG PC 1212-9	-	-	-	x	-	-	-	-	-	-	-	-	-	
160	80	105	NG PC 1212-11	-	-	-	x	-	-	-	-	-	-	-	-	-	
		55	NG PC 1608-6	-	-	-	-	x	-	-	-	-	-	-	-	-	
160	80	85	NG PC 1608-9	-	-	-	-	x	-	-	-	-	-	-	-	-	
		90	NG PC 1612-9	-	-	-	-	-	x	-	-	-	-	-	-	-	
200	120	75	NG PC 2012-8	-	-	-	-	-	-	x	-	-	-	-	-	-	
		90	NG PC 2012-9	-	-	-	-	-	-	x	-	-	-	-	-	-	
240	120	100	NG PC 2412-10	-	-	-	-	-	-	x	-	-	-	-	-		
200		150	75	NG PC 2015-8	-	-	-	-	-	-	-	x	-	-	-		
240	160	90	NG PC 2416-9	-	-	-	-	-	-	-	-	-	x	-	-		
		120	NG PC 2416-12	-	-	-	-	-	-	-	-	-	x	-	-		
250	160	90	NG PC 2516-9	-	-	-	-	-	-	-	-	-	-	x	-		
		120	NG PC 2516-12	-	-	-	-	-	-	-	-	-	-	x	-		
300	230	85	NG PC 3023-9	-	-	-	-	-	-	-	-	-	-	-	x		
		110	NG PC 3023-11	-	-	-	-	-	-	-	-	-	-	-	x		
360	200	150	NG PC 3620-15	-	-	-	-	-	-	-	-	-	-	-	x		