

**Ferraz Shawmut**  
**Current-Limiting Power Fuses**  
formally GE Current-Limiting Power Fuses





Ferraz Shawmut LLC acquired General Electric's Power Fuse operations from GE Consumer & Industrial on December 3<sup>rd</sup>, 2007. Since then, all Current-Limiting Power Fuses, Fuse Supports, Fuse Disconnect Switches and Spare Parts offered by GE are now available from Ferraz Shawmut. While the present catalog contains the majority of these GE products, other publications or technical information can be obtained from the factory or Ferraz Shawmut website regarding products or data not included in this document. For information regarding the Ferraz Shawmut Medium Voltage Fuse line, please consult our Advisor, our website or contact the factory.

**9F60 series, EJ-2 type (Motor Starters) (U/L Recognized)**

Backup current-limiting power fuses designed to provide short circuit protection of individual motors. These fuses are designed to interrupt current from 100 times the R-rating up to 50kA rms symmetrical at rated voltage. The elements of these fuses are designed to withstand the cyclic motor-starting application.



**9F60 series, EJ-5 / EJO-5 type (Capacitor)**

Special-purpose fuses designed for individual capacitor protection. The EJ-5 is designed for use indoors or inside an enclosure only. The EJO-5 models can be used outdoors. The major purposes of such fusing are: (a) to protect the systems from failed capacitor units, and (b) to prevent damage to adjacent capacitors and associated equipment.



**9F60 series, EJ-1 / EJO-1 type (Power Distribution)**

Current limiting power fuses designed not only to interrupt the high-fault currents but also to interrupt low-fault currents down to approximately 3 times their continuous rating. The EJO-1 models can be used outdoors without any protecting enclosure.



**9F62 series, EJO-1 type (General Purpose) (U/L Listed)**

General Purpose current-limiting fuses designed to interrupt the high-fault currents and also the low-fault currents down to approximately 1.6 times their continuous current rating. These fuses can be used outdoors without any protecting enclosure.



**9F61 series, EK-1 / EKO-1 (Fuse Supports)**

Mountings of the non-disconnecting type are available. They are used primarily in potential transformer circuits, or where there is some other disconnecting or isolating device in series with the fuse in the circuit. Fuse supports can be mounted vertically or horizontally. The EKO-1 models are designed to be installed outdoors.



**9F61 series, EK-3 / EKO-3 (Fuse Disconnect Switches)**

These devices have the additional feature of serving as disconnecting switches to isolate the equipment they protect. It should be noted that the disconnecting switches are not load-breaking devices, therefore the circuit must be open prior to the fuse disconnection. The EKO-3 models are designed to be installed outdoors.



**9F59U series, ETP type (Distribution Applications)**

Backup current-limiting fuses designed to protect external transformers are used in series with another protective device (such as an expulsion fuse). This combination limits the high-fault current to a safe level, thus providing protection through the complete range.



**9F59T series, OSP type (Distribution Applications)**

Backup current-limiting fuses are designed to be used in series with another protective device (such as an expulsion fuse) to give protection through the complete range. OSP stands for Oil Submerged Protector. These fuses are sealed against the ingress of oil. Each fuse is given a helium mass spectrometer leak test to prove the integrity of the seal.

# Current-Limiting Power Fuses



## Application

Medium-voltage distribution systems that supply industrial plants, shopping centers, hospitals, schools, office buildings and underground residential service often require special types of overcurrent protection. This is of particular importance because, in the event of a fault, these types of systems frequently produce high short-circuit currents that may result in damage to busway, motors, switches and other equipment. Current-limiting power fuses are widely used in these applications because they afford excellent over-current protection and noiseless operation, and because they can be used in confined spaces. The amount of damage in the faulted area and the mechanical stress and strain on busway, switches and other apparatus carrying the fault current is proportional to the square of the current and to the length of time the fault persists. By limiting the let through energy at the fault, properly applied current-limiting fuses assist in limiting or preventing short-circuit damage to busway, circuit breakers, switches, and other electrical components. Current-limiting power fuses are manufactured in ratings ranging from 0.6 kV through 38 kV and in continuous current ratings from 0.5 amperes through 900 amperes. Various designs are available for use with motors, transformers, capacitors, and circuit-protection equipment.

## Product Features

Current-limiting power fuses offer significant advantages for protecting electrical power systems and equipment. Advantages include:

- High interrupting capacity
- Noiseless operation, since the interruption is totally contained
- Fast current-limiting operation when troublesome high available fault currents are encountered
- No pressure build-up, therefore, no vents or special reinforced compartments are required

## Capacitor Fuses

### 9F60 Series

#### EJO-5 9F60

Suitable for use indoors or outdoors



## Product Description

Backup Capacitor current-limiting fuses are designed for individual capacitor protection. The EJO-5 can be used in any location (indoor or outdoor). The major purposes of such fusing are: (a) to protect the systems from failed capacitor units, and (b) to prevent damage to adjacent capacitors and associated equipment.

### 12" Clip Centers Clip-in Mounting<sup>1</sup> Indoor or Outdoor

Max. kV	Amp Rating	No. of Barrels	Indicating	Size/Diam/Length	I/C Sym.	TCC min/max GES	Product Number	List Price Prod. ID MVCAP
5.5	25	1	YES	C/2.08"/14.00"	50kA	8118/8119	9F60RJD025	<b>\$179.00</b>
5.5	40	1	YES	C/2.08"/14.00"	50kA	8118/8119	9F60RJD040	<b>\$179.00</b>
5.5	80	1	YES	C/2.08"/14.00"	50kA	8120/8121	9F60RJD080	<b>\$179.00</b>
9.52	15	1	YES	C/2.08"/14.00"	50kA	8118/8119	9F60RJF015	<b>\$204.00</b>
9.52	25	1	YES	C/2.08"/14.00"	50kA	8120/8121	9F60RJF025	<b>\$204.00</b>
9.52	40	1	YES	C/2.08"/14.00"	50kA	8120/8121	9F60RJF040	<b>\$204.00</b>

<sup>1</sup>EJO-5 capacitor fuses are typically mounted directly on the capacitor. No supports, disconnect switches, or live parts are available.

# Current-Limiting Power Fuses

## General Purpose Fuses

9F62 Series

EJO-1 General Purpose

UL Listed

Suitable for use indoors or outdoors

### Product Description

General Purpose current-limiting fuses are designed to interrupt the high-fault currents and also the low-fault currents down to approximately 1.6 to 2.2 times their continuous current rating. This fuse is defined in the IEEE Std C37.40 -1993 (3.1.57) as "A fuse capable of interrupting all currents from the rated interrupting current down to the current that causes melting of the fusible element in no less than one hour." These fuses can be used outdoors without any protecting enclosure. Available from 5.5 to 15.5kV and 20 to 900A.



### 12" Clip Centers Clip-in Mounting Indoor or Outdoor

Max kV	Amp Rating	No. of Barrels	Indicating	Size/Diam/Length	I/C Sym.	TCC min/max GES	Fuse Support, Indoor	Fuse Support, Outdoor	Disconnecting Switch, Indoor	Disconnecting Switch, Outdoor	Product Number	List Price Prod. ID MVEG
5.5	25	1	YES	C/2"/14.18"	50 kA	8134/8135	9F61AEG201	9F61CEF209	9F61AEG205	9F61CEF210	9F62HCB025	\$398.00
5.5	30	1	YES	C/2"/14.18"	50 kA	8134/8135	9F61AEG201	9F61CEF209	9F61AEG205	9F61CEF210	9F62HCB030	\$398.00
5.5	40	1	YES	C/2"/14.18"	50 kA	8134/8135	9F61AEG201	9F61CEF209	9F61AEG205	9F61CEF210	9F62HCB040	\$398.00
5.5	50	1	YES	C/2"/14.18"	50 kA	8134/8135	9F61AEG201	9F61CEF209	9F61AEG205	9F61CEF210	9F62HCB050	\$398.00
5.5	65	1	YES	C/2"/14.18"	50 kA	8134/8135	9F61AEG201	9F61CEF209	9F61AEG205	9F61CEF210	9F62HCB065	\$398.00
5.5	80	1	YES	D/3"/15.88"	50 kA	8134/8135	9F61AEB301	9F61CEF309	9F61AEB305	9F61CEF310	9F62DCB080	\$435.00
5.5	100	1	YES	D/3"/15.88"	50 kA	8134/8135	9F61AEB301	9F61CEF309	9F61AEB305	9F61CEF310	9F62DCB100	\$435.00
5.5	125	1	YES	D/3"/15.88"	50 kA	8134/8135	9F61AEB301	9F61CEF309	9F61AEB305	9F61CEF310	9F62DCB125	\$739.00
5.5	150	1	YES	D/3"/15.88"	50 kA	8134/8135	9F61AEB301	9F61CEF309	9F61AEB305	9F61CEF310	9F62DCB150	\$739.00
5.5	175	1	YES	D/3"/15.88"	50 kA	8134/8135	9F61AEB301	9F61CEF309	9F61AEB305	9F61CEF310	9F62DCB175	\$839.00
5.5	200	1	YES	D/3"/15.88"	50 kA	8134/8135	9F61AEB301	9F61CEF309	9F61AEB305	9F61CEF310	9F62DCB200	\$839.00
5.5	250	2	YES	DD/(2) 3"/15.88"	50 kA	8134/8135	9F61AEB401	9F61CEF409	9F61AEB405	9F61CEF410	9F62FCB250	\$1280.00
5.5	300	2	YES	DD/(2) 3"/15.88"	50 kA	8134/8135	9F61AEB401	9F61CEF409	9F61AEB405	9F61CEF410	9F62FCB300	\$1280.00
5.5	350	2	YES	DD/(2) 3"/15.88"	50 kA	8134/8135	9F61AEB401	9F61CEF409	9F61AEB405	9F61CEF410	9F62FCB350	\$1280.00
5.5	400	2	YES	DD/(2) 3"/15.88"	50 kA	8134/8135	9F61AEB401	9F61CEF409	9F61AEB405	9F61CEF410	9F62FCB400	\$1395.00
5.5	450	2	YES	DD/(2) 3"/15.88"	50 kA	8134/8135	9F61AEB401	9F61CEF409	9F61AEB405	9F61CEF410	9F62FCB450	\$1395.00
8.3	20	1	YES	C/2"/14.18"	50 kA	8136/8137	9F61AEG201	9F61CEF209	9F61AEG205	9F61CEF210	9F62HCC020	\$405.00
8.3	25	1	YES	C/2"/14.18"	50 kA	8136/8137	9F61AEG201	9F61CEF209	9F61AEG205	9F61CEF210	9F62HCC025	\$405.00
8.3	30	1	YES	C/2"/14.18"	50 kA	8136/8137	9F61AEG201	9F61CEF209	9F61AEG205	9F61CEF210	9F62HCC030	\$405.00
8.3	40	1	YES	C/2"/14.18"	50 kA	8136/8137	9F61AEG201	9F61CEF209	9F61AEG205	9F61CEF210	9F62HCC040	\$405.00
8.3	50	1	YES	C/2"/14.18"	50 kA	8136/8137	9F61AEG201	9F61CEF209	9F61AEG205	9F61CEF210	9F62HCC050	\$405.00
8.3	65	1	YES	D/3"/15.88"	50 kA	8136/8137	9F61AEG301	9F61CEF309	9F61AEG305	9F61CEF310	9F62DCC065	\$409.00
8.3	80	1	YES	D/3"/15.88"	50 kA	8136/8137	9F61AEG301	9F61CEF309	9F61AEG305	9F61CEF310	9F62DCC080	\$409.00
8.3	100	1	YES	D/3"/15.88"	50 kA	8136/8137	9F61AEG301	9F61CEF309	9F61AEG305	9F61CEF310	9F62DCC100	\$409.00
8.3	125	1	YES	D/3"/15.88"	50 kA	8136/8137	9F61AEG301	9F61CEF309	9F61AEG305	9F61CEF310	9F62DCC125	\$767.00
8.3	150	1	YES	D/3"/15.88"	50 kA	8136/8137	9F61AEG301	9F61CEF309	9F61AEG305	9F61CEF310	9F62DCC150	\$767.00
8.3	175	2	YES	DD/(2) 3"/15.88"	50 kA	8136/8137	9F61AEG401	9F61CEF409	9F61AEG405	9F61CEF410	9F62FCC175	\$849.00
8.3	200	2	YES	DD/(2) 3"/15.88"	50 kA	8136/8137	9F61AEG401	9F61CEF409	9F61AEG405	9F61CEF410	9F62FCC200	\$849.00
8.3	250	2	YES	DD/(2) 3"/15.88"	50 kA	8136/8137	9F61AEG401	9F61CEF409	9F61AEG405	9F61CEF410	9F62FCC250	\$849.00

# Current-Limiting Power Fuses

## Bolted End Fittings Indoor or Outdoor

Max. kV	Amp Rating	No. of Barrels	Indicating	Size/Diam/Length	I/C Sym.	TCC min/max GES	Fuse Support, Indoor	Fuse Support, Outdoor	Disconnecting Switch, Indoor	Disconnecting Switch, Outdoor	Product Number	List Price Prod. ID MVEG
5.5	500	4	YES	DDDD/(4) 3"/see outline drawing for dimensions	50 kA	8134/8135	9F61AKB001	9F61CKF009	-	-	9F62KCB500	\$2200.00
5.5	600	4	YES	DDDD/(4) 3"/see outline drawing for dimensions	50 kA	8134/8135	9F61AKB001	9F61CKF009	-	-	9F62KCB600	\$2200.00
5.5	700	4	YES	DDDD/(4) 3"/see outline drawing for dimensions	50 kA	8134/8135	9F61AKB001	9F61CKF009	-	-	9F62KCB700	\$2475.00
5.5	800	4	YES	DDDD/(4) 3"/see outline drawing for dimensions	50 kA	8134/8135	9F61AKB001	9F61CKF009	-	-	9F62KCB800	\$2475.00
5.5	900	4	YES	DDDD/(4) 3"/see outline drawing for dimensions	50 kA	8134/8135	9F61AKB001	9F61CKF009	-	-	9F62KCB900	\$2475.00

# Current-Limiting Power Fuses

## 15"Clip Centers Clip-in Mounting Indoor or Outdoor

Max. kV	Amp Rating	No. of Barrels	Indicating	Size/Diam/Length	I/C Sym.	TCC min/max GES	Fuse Support, Indoor	Fuse Support, Outdoor	Disconnecting Switch, Indoor	Disconnecting Switch, Outdoor	Product Number	List Price Prod. ID MVEG
15.5	20	1	YES	C/2"/17.20"	50 kA	8138/8139	9F61AGG201 (13.8kV nominal 95 kV BIL), 9F61AGJ201 (14.4kV nominal 110 kV BIL)	9F61CGL209	9F61AGG205 (13.8kV nominal 95 kV BIL), 9F61AGJ205 (14.4kV nominal 110 kV BIL)	9F61CGL210	9F62HDD020	\$629.00
15.5	25	1	YES	C/2"/17.20"	50 kA	8138/8139	9F61AGG201 (13.8kV nominal 95 kV BIL), 9F61AGJ201 (14.4kV nominal 110 kV BIL)	9F61CGL209	9F61AGG205 (13.8kV nominal 95 kV BIL), 9F61AGJ205 (14.4kV nominal 110 kV BIL)	9F61CGL210	9F62HDD025	\$629.00
15.5	30	1	YES	C/2"/17.20"	50 kA	8138/8139	9F61AGG201 (13.8kV nominal 95 kV BIL), 9F61AGJ201 (14.4kV nominal 110 kV BIL)	9F61CGL209	9F61AGG205 (13.8kV nominal 95 kV BIL), 9F61AGJ205 (14.4kV nominal 110 kV BIL)	9F61CGL210	9F62HDD030	\$629.00
15.5	50	1	YES	D/3"/18.88"	50 kA	8138/8139	9F61AGG301 (13.8kV nominal 95 kV BIL), 9F61AGJ301 (14.4kV nominal 110 kV BIL)	9F61CGL309	9F61AGG305 (13.8kV nominal 95 kV BIL), 9F61AGJ305 (14.4kV nominal 110 kV BIL)	9F61CGL310	9F62DDD050	\$732.00
15.5	65	1	YES	D/3"/18.88"	50 kA	8138/8139	9F61AGG301 (13.8kV nominal 95 kV BIL), 9F61AGJ301 (14.4kV nominal 110 kV BIL)	9F61CGL309	9F61AGG305 (13.8kV nominal 95 kV BIL), 9F61AGJ305 (14.4kV nominal 110 kV BIL)	9F61CGL310	9F62DDD065	\$732.00
15.5	80	1	YES	D/3"/18.88"	50 kA	8138/8139	9F61AGG301 (13.8kV nominal 95 kV BIL), 9F61AGJ301 (14.4kV nominal 110 kV BIL)	9F61CGL309	9F61AGG305 (13.8kV nominal 95 kV BIL), 9F61AGJ305 (14.4kV nominal 110 kV BIL)	9F61CGL310	9F62DDD080	\$997.00
15.5	100	1	YES	D/3"/18.88"	50 kA	8138/8139	9F61AGG301 (13.8kV nominal 95 kV BIL), 9F61AGJ301 (14.4kV nominal 110 kV BIL)	9F61CGL309	9F61AGG305 (13.8kV nominal 95 kV BIL), 9F61AGJ305 (14.4kV nominal 110 kV BIL)	9F61CGL310	9F62DDD100	\$997.00
15.5	125	2	YES	DD/(2)3"/18.88"	50 kA	8138/8139	9F61AGG401 (13.8kV nominal 95 kV BIL), 9F61AGJ401 (14.4kV nominal 110 kV BIL)	9F61CGL409	9F61AGG405 (13.8kV nominal 95 kV BIL), 9F61AGJ405 (14.4kV nominal 110 kV BIL)	9F61CGL410	9F62FDD125	\$1495.00
15.5	150	2	YES	DD/(2)3"/18.88"	50 kA	8138/8139	9F61AGG401 (13.8kV nominal 95 kV BIL), 9F61AGJ401 (14.4kV nominal 110 kV BIL)	9F61CGL409	9F61AGG405 (13.8kV nominal 95 kV BIL), 9F61AGJ405 (14.4kV nominal 110 kV BIL)	9F61CGL410	9F62FDD150	\$1495.00
15.5	175	2	YES	DD/(2)3"/18.88"	50 kA	8138/8139	9F61AGG401 (13.8kV nominal 95 kV BIL), 9F61AGJ401 (14.4kV nominal 110 kV BIL)	9F61CGL409	9F61AGG405 (13.8kV nominal 95 kV BIL), 9F61AGJ405 (14.4kV nominal 110 kV BIL)	9F61CGL410	9F62FDD175	\$1495.00
15.5	200	2	YES	DD/(2)3"/18.88"	50 kA	8138/8139	9F61AGG401 (13.8kV nominal 95 kV BIL), 9F61AGJ401 (14.4kV nominal 110 kV BIL)	9F61CGL409	9F61AGG405 (13.8kV nominal 95 kV BIL), 9F61AGJ405 (14.4kV nominal 110 kV BIL)	9F61CGL410	9F62FDD200	\$1495.00

## Bolted End Fittings Indoor or Outdoor

Max. kV	Amp Rating	No. of Barrels	Indicating	Size/Diam/Length	I/C Sym.	TCC min/max GES	Fuse Support, Indoor	Fuse Support, Outdoor	Disconnecting Switch, Indoor	Disconnecting Switch, Outdoor	Product Number	List Price Prod. ID MVEG
15.5	300	4	YES	DDDD/(4) 3"/see outline drawing for dimensions	50 kA	8138/8139	9F61AHG001 (13.8kV nominal, 95 kV BIL), 9F61AHJ001 (14.4kV nominal, 110 kV BIL)	9F61CHL009	N/A	N/A	9F62KED300	\$2509.00

# Current-Limiting Power Fuses

## Power Distribution Fuses

9F60 Series, "E" Rated

EJ-1

Suitable for use indoors or in an enclosure only



### Product Description

Power distribution current-limiting fuses are designed not only to interrupt the high-fault currents but also to interrupt low-fault currents down to approximately 3 times their continuous rating.

### 7" Clip Centers Clip-in Mounting Indoor or Enclosure

Max. kV	Amp Rating	No. of Barrels	Indicating	Size/Diam/Length	I/C Sym.	TCC min/max GES	Fuse Support, Indoor	Fuse Support, Outdoor	Disconnecting Switch, Indoor	Disconnecting Switch, Outdoor	Product Number	List Price Prod. ID MVEG
2.75	1E	1	YES	C/2"/9.18"	38kA	8106/8107	9F61AAB201	-	9F61AAB201	-	9F60CCB001	\$182.00
2.75	2E	1	YES	C/2"/9.18"	38kA	8106/8107	9F61AAB201	-	9F61AAB201	-	9F60CCB002	\$182.00
2.75	3E	1	YES	C/2"/9.18"	38kA	8106/8107	9F61AAB201	-	9F61AAB201	-	9F60CCB003	\$182.00
2.75	5E	1	YES	C/2"/9.18"	38kA	8106/8107	9F61AAB201	-	9F61AAB201	-	9F60CCB005	\$182.00
2.75	7E	1	YES	C/2"/9.18"	38kA	8106/8107	9F61AAB201	-	9F61AAB201	-	9F60CCB007	\$182.00
2.75	10E	1	YES	C/2"/9.18"	38kA	8106/8107	9F61AAB201	-	9F61AAB201	-	9F60CCB010	\$182.00
2.75	15E	1	YES	C/2"/9.18"	38kA	8106/8107	9F61AAB201	-	9F61AAB201	-	9F60CCB015	\$216.00
2.75	20E	1	YES	C/2"/9.18"	38kA	8106/8107	9F61AAB201	-	9F61AAB201	-	9F60CCB020	\$216.00
2.75	25E	1	YES	C/2"/9.18"	38kA	8106/8107	9F61AAB201	-	9F61AAB201	-	9F60CCB025	\$216.00
2.75	30E	1	YES	D/3"/10.88"	38kA	8106/8107	9F61AAB301	-	9F61AAB305	-	9F60CCB030	\$378.00
2.75	40E	1	YES	D/3"/10.88"	38kA	8106/8107	9F61AAB301	-	9F61AAB305	-	9F60CCB040	\$378.00
2.75	50E	1	YES	D/3"/10.88"	38kA	8106/8107	9F61AAB301	-	9F61AAB305	-	9F60CCB050	\$378.00
2.75	65E	1	YES	D/3"/10.88"	38kA	8106/8107	9F61AAB301	-	9F61AAB305	-	9F60CCB065	\$378.00
2.75	80E	1	YES	D/3"/10.88"	38kA	8106/8107	9F61AAB301	-	9F61AAB305	-	9F60CCB080	\$378.00
2.75	100E	1	YES	D/3"/10.88"	38kA	8106/8107	9F61AAB301	-	9F61AAB305	-	9F60CCB100	\$378.00
2.75	125E	1	YES	DD(2) 3"/10.88"	38kA	8106/8107	9F61AAB401	-	9F61AAB405	-	9F60CCB125	\$793.00
2.75	150E	1	YES	DD(2) 3"/10.88"	38kA	8106/8107	9F61AAB401	-	9F61AAB405	-	9F60CCB150	\$793.00
2.75	200E	1	YES	DD(2) 3"/10.88"	38kA	8106/8107	9F61AAB401	-	9F61AAB405	-	9F60CCB200	\$793.00

### 9" Clip Centers Clip-in Mounting Indoor or Enclosure

Max. kV	Amp Rating	No. of Barrels	Indicating	Size/Diam/Length	I/C Sym.	TCC min/max GES	Fuse Support, Indoor	Fuse Support, Outdoor	Disconnecting Switch, Indoor	Disconnecting Switch, Outdoor	Product Number	List Price Prod. ID MVEG
2.75	1E	1	YES	C/2"/11.18"	38kA	8106/8107	9F61ACB201	-	9F61ACB205	-	9F60CEB001	\$202.00
2.75	2E	1	YES	C/2"/11.18"	38kA	8106/8107	9F61ACB201	-	9F61ACB205	-	9F60CEB002	\$202.00
2.75	3E	1	YES	C/2"/11.18"	38kA	8106/8107	9F61ACB201	-	9F61ACB205	-	9F60CEB003	\$202.00
2.75	5E	1	YES	C/2"/11.18"	38kA	8106/8107	9F61ACB201	-	9F61ACB205	-	9F60CEB005	\$202.00
2.75	7E	1	YES	C/2"/11.18"	38kA	8106/8107	9F61ACB201	-	9F61ACB205	-	9F60CEB007	\$202.00
2.75	10E	1	YES	C/2"/11.18"	38kA	8106/8107	9F61ACB201	-	9F61ACB205	-	9F60CEB010	\$202.00
2.75	15E	1	YES	C/2"/11.18"	38kA	8106/8107	9F61ACB201	-	9F61ACB205	-	9F60CEB015	\$274.00
2.75	20E	1	YES	C/2"/11.18"	38kA	8106/8107	9F61ACB201	-	9F61ACB205	-	9F60CEB020	\$274.00
2.75	25E	1	YES	C/2"/11.18"	38kA	8106/8107	9F61ACB201	-	9F61ACB205	-	9F60CEB025	\$274.00
5.5	0.5E	1	YES	C/2"/11.18"	63kA	8106/8107	9F61ACB201	-	9F61ACB205	-	9F60CED905	\$195.00
5.5	1E	1	YES	C/2"/11.18"	63kA	8106/8107	9F61ACB201	-	9F61ACB205	-	9F60CED001	\$195.00
5.5	2E	1	YES	C/2"/11.18"	63kA	8106/8107	9F61ACB201	-	9F61ACB205	-	9F60CED002	\$195.00
5.5	3E	1	YES	C/2"/11.18"	63kA	8106/8107	9F61ACB201	-	9F61ACB205	-	9F60CED003	\$195.00
5.5	5E	1	YES	C/2"/11.18"	63kA	8106/8107	9F61ACB201	-	9F61ACB205	-	9F60CED005	\$195.00
5.5	7E	1	YES	C/2"/11.18"	63kA	8106/8107	9F61ACB201	-	9F61ACB205	-	9F60CED007	\$195.00
5.5	10E	1	YES	C/2"/11.18"	63kA	8106/8107	9F61ACB201	-	9F61ACB205	-	9F60CED010	\$195.00
5.5	15E	1	YES	C/2"/11.18"	63kA	8106/8107	9F61ACB201	-	9F61ACB205	-	9F60CED015	\$220.00
5.5	20E	1	YES	C/2"/11.18"	63kA	8106/8107	9F61ACB201	-	9F61ACB205	-	9F60CED020	\$220.00
5.5	25E	1	YES	C/2"/11.18"	63kA	8106/8107	9F61ACB201	-	9F61ACB205	-	9F60CED025	\$220.00

# Current-Limiting Power Fuses

## Power Distribution Fuses

9F60 Series, "E" Rated

EJ-1

Suitable for use indoors or in an enclosure only

### 12" Clip Centers Clip-in Mounting Indoor or Enclosure

Max. kV	Amp Rating	No. of Barrels	Indicating	Size/Diam/Length	I/C Sym.	TCC min/max GES	Fuse Support, Indoor	Fuse Support, Outdoor	Disconnecting Switch, Indoor	Disconnecting Switch, Outdoor	Product Number	List Price Prod. ID MVEG
15.5	2E	1	YES	C/2"/14.18"	82kA	8104/8105	9F61AEG201	-	9F61AEG206	-	9F60CJH002	\$269.00
15.5	3E	1	YES	C/2"/14.18"	82kA	8104/8105	9F61AEG201	-	9F61AEG206	-	9F60CJH003	\$269.00
15.5	5E	1	YES	C/2"/14.18"	82kA	8104/8105	9F61AEG201	-	9F61AEG206	-	9F60CJH005	\$269.00
15.5	7E	1	YES	C/2"/14.18"	82kA	8104/8105	9F61AEG201	-	9F61AEG206	-	9F60CJH007	\$269.00
15.5	10E	1	YES	C/2"/14.18"	82kA	8104/8105	9F61AEG201	-	9F61AEG206	-	9F60CJH010	\$269.00

### 14" Clip Centers Clip-in Mounting Indoor or Enclosure

Max. kV	Amp Rating	No. of Barrels	Indicating	Size/Diam/Length	I/C Sym.	TCC min/max GES	Fuse Support, Indoor	Fuse Support, Outdoor	Disconnecting Switch, Indoor	Disconnecting Switch, Outdoor	Product Number	List Price Prod. ID MVEG
15	125E	2	YES	EE/(2) 4.00"/19.12"	38kA	8104/8105	9F61AFG501 (13.8 kV, 95 BIL), 9F61AFJ501 (14.4 kV 110 BIL)	N/A for Outdoor Mounting	N/A	N/A for Outdoor Mounting	9F60KLH125	\$1570.00
15	150E	2	YES	EE/(2) 4.00"/19.12"	31kA	8104/8105	9F61AFG501 (13.8 kV, 95 BIL), 9F61AFJ501 (14.4 kV 110 BIL)	N/A for Outdoor Mounting	N/A	N/A for Outdoor Mounting	9F60KLH150	\$1570.00
15	175E	2	YES	EE/(2) 4.00"/19.12"	31kA	8104/8105	9F61AFG501 (13.8 kV, 95 BIL), 9F61AFJ501 (14.4 kV 110 BIL)	N/A for Outdoor Mounting	N/A	N/A for Outdoor Mounting	9F60KLH175	\$1570.00

### 15" Clip Centers Clip-in Mounting Indoor or Enclosure

Max. kV	Amp Rating	No. of Barrels	Indicating	Size/Diam/Length	I/C Sym.	TCC min/max GES	Fuse Support, Indoor	Fuse Support, Outdoor	Disconnecting Switch, Indoor	Disconnecting Switch, Outdoor	Product Number	List Price Prod. ID MVEG
25.8	0.5E	1	YES	C/2"/17.20"	82kA	8114/8115	Consult Factory	N/A for Outdoor Mounting	Consult Factory	N/A for Outdoor Mounting	9F60CMJ905	\$343.00
25.8	1E	1	YES	C/2"/17.20"	82kA	8114/8115	Consult Factory	N/A for Outdoor Mounting	Consult Factory	N/A for Outdoor Mounting	9F60CMJ001	\$343.00
25.8	2E	1	YES	C/2"/17.20"	82kA	8114/8115	Consult Factory	N/A for Outdoor Mounting	Consult Factory	N/A for Outdoor Mounting	9F60CMJ002	\$343.00

# Current-Limiting Power Fuses

## Power Distribution Fuses

9F60 Series, "E" Rated

EJO-1

Suitable for use indoors and outdoors



### Product Description

Power distribution current-limiting fuses are designed not only to interrupt the high-fault currents but also to interrupt low-fault currents down to approximately 3 times their continuous rating. The EJO-1 models can be used outdoors without any protecting enclosure.

### 12" Clip Centers Clip-in Mounting Indoor or Enclosure

Max. kV	Amp Rating	No. of Barrels	Indicating	Size/Diam/Length	I/C Sym.	TCC min/max GES	Fuse Support, Indoor	Fuse Support, Outdoor	Disconnecting Switch, Indoor	Disconnecting Switch, Outdoor	Product Number	List Price Prod. ID MVEG
2.75	1E	1	YES	C/2"/14.18"	50kA	8106/8107	9F61AEG201	9F61CEF209	9F61AEG205	9F61CEF210	9F60DJB001	\$194.00
2.75	2E	1	YES	C/2"/14.18"	50kA	8106/8107	9F61AEG201	9F61CEF209	9F61AEG205	9F61CEF210	9F60DJB002	\$194.00
2.75	3E	1	YES	C/2"/14.18"	50kA	8106/8107	9F61AEG201	9F61CEF209	9F61AEG205	9F61CEF210	9F60DJB003	\$194.00
2.75	5E	1	YES	C/2"/14.18"	50kA	8106/8107	9F61AEG201	9F61CEF209	9F61AEG205	9F61CEF210	9F60DJB005	\$194.00
2.75	7E	1	YES	C/2"/14.18"	50kA	8106/8107	9F61AEG201	9F61CEF209	9F61AEG205	9F61CEF210	9F60DJB007	\$194.00
2.75	10E	1	YES	C/2"/14.18"	50kA	8106/8107	9F61AEG201	9F61CEF209	9F61AEG205	9F61CEF210	9F60DJB010	\$194.00
2.75	15E	1	YES	C/2"/14.18"	50kA	8106/8107	9F61AEG201	9F61CEF209	9F61AEG205	9F61CEF210	9F60DJB015	\$219.00
2.75	20E	1	YES	C/2"/14.18"	50kA	8106/8107	9F61AEG201	9F61CEF209	9F61AEG205	9F61CEF210	9F60DJB020	\$219.00
2.75	25E	1	YES	C/2"/14.18"	50kA	8106/8107	9F61AEG201	9F61CEF209	9F61AEG205	9F61CEF210	9F60DJB025	\$219.00
2.75	30E	1	YES	D/3"/15.88"	50kA	8106/8107	9F61AEB301	9F61CEF309	9F61AEB305	9F61CEF310	9F60FJB030	\$386.00
2.75	40E	1	YES	D/3"/15.88"	50kA	8106/8107	9F61AEB301	9F61CEF309	9F61AEB305	9F61CEF310	9F60FJB040	\$386.00
2.75	50E	1	YES	D/3"/15.88"	50kA	8106/8107	9F61AEB301	9F61CEF309	9F61AEB305	9F61CEF310	9F60FJB050	\$386.00
2.75	65E	1	YES	D/3"/15.88"	50kA	8106/8107	9F61AEB301	9F61CEF309	9F61AEB305	9F61CEF310	9F60FJB065	\$386.00
2.75	80E	1	YES	D/3"/15.88"	50kA	8106/8107	9F61AEB301	9F61CEF309	9F61AEB305	9F61CEF310	9F60FJB080	\$386.00
2.75	100E	1	YES	D/3"/15.88"	50kA	8106/8107	9F61AEB301	9F61CEF309	9F61AEB305	9F61CEF310	9F60FJB100	\$386.00
2.75	125E	2	YES	DD/(2) 3"/15.88"	50kA	8106/8107	9F61AEB401	9F61CEF409	9F61AEB405	9F61CEF410	9F60HJB125	\$696.00
2.75	150E	2	YES	DD/(2) 3"/15.88"	50kA	8106/8107	9F61AEB401	9F61CEF409	9F61AEB405	9F61CEF410	9F60HJB150	\$696.00
2.75	200E	2	YES	DD/(2) 3"/15.88"	50kA	8106/8107	9F61AEB401	9F61CEF409	9F61AEB405	9F61CEF410	9F60HJB200	\$696.00
5.5	0.5E	1	YES	C/2"/14.18"	50kA	8106/8107	9F61AEG201	9F61CEF209	9F61AEG205	9F61CEF210	9F60JD905	\$198.00
5.5	1E	1	YES	C/2"/14.18"	50kA	8106/8107	9F61AEG201	9F61CEF209	9F61AEG205	9F61CEF210	9F60JD001	\$198.00
5.5	2E	1	YES	C/2"/14.18"	50kA	8106/8107	9F61AEG201	9F61CEF209	9F61AEG205	9F61CEF210	9F60JD002	\$198.00
5.5	3E	1	YES	C/2"/14.18"	50kA	8106/8107	9F61AEG201	9F61CEF209	9F61AEG205	9F61CEF210	9F60JD003	\$198.00
5.5	5E	1	YES	C/2"/14.18"	50kA	8106/8107	9F61AEG201	9F61CEF209	9F61AEG205	9F61CEF210	9F60JD005	\$198.00
5.5	7E	1	YES	C/2"/14.18"	50kA	8106/8107	9F61AEG201	9F61CEF209	9F61AEG205	9F61CEF210	9F60JD007	\$198.00
5.5	10E	1	YES	C/2"/14.18"	50kA	8106/8107	9F61AEG201	9F61CEF209	9F61AEG205	9F61CEF210	9F60JD010	\$198.00
5.5	15E	1	YES	C/2"/14.18"	50kA	8106/8107	9F61AEG201	9F61CEF209	9F61AEG205	9F61CEF210	9F60JD015	\$221.00
5.5	20E	1	YES	C/2"/14.18"	50kA	8106/8107	9F61AEG201	9F61CEF209	9F61AEG205	9F61CEF210	9F60JD020	\$221.00
5.5	25E	1	YES	C/2"/14.18"	50kA	8106/8107	9F61AEG201	9F61CEF209	9F61AEG205	9F61CEF210	9F60JD025	\$221.00
5.5	30E	1	YES	D/3"/15.88"	50kA	8106/8107	9F61AEB301	9F61CEF309	9F61AEB305	9F61CEF310	9F60FJD030	\$418.00
5.5	40E	1	YES	D/3"/15.88"	50kA	8106/8107	9F61AEB301	9F61CEF309	9F61AEB305	9F61CEF310	9F60FJD040	\$418.00
5.5	50E	1	YES	D/3"/15.88"	50kA	8106/8107	9F61AEB301	9F61CEF309	9F61AEB305	9F61CEF310	9F60FJD050	\$418.00
5.5	65E	1	YES	D/3"/15.88"	50kA	8106/8107	9F61AEB301	9F61CEF309	9F61AEB305	9F61CEF310	9F60FJD065	\$418.00
5.5	80E	1	YES	D/3"/15.88"	50kA	8106/8107	9F61AEB301	9F61CEF309	9F61AEB305	9F61CEF310	9F60FJD080	\$457.00
5.5	100E	1	YES	D/3"/15.88"	50kA	8106/8107	9F61AEB301	9F61CEF309	9F61AEB305	9F61CEF310	9F60FJD100	\$457.00
5.5	125E	2	YES	DD/(2) 3"/15.88"	50kA	8106/8107	9F61AEB401	9F61CEF409	9F61AEB405	9F61CEF410	9F60HJD125	\$776.00
5.5	150E	2	YES	DD/(2) 3"/15.88"	50kA	8106/8107	9F61AEB401	9F61CEF409	9F61AEB405	9F61CEF410	9F60HJD150	\$776.00
5.5	200E	2	YES	DD/(2) 3"/15.88"	50kA	8106/8107	9F61AEB401	9F61CEF409	9F61AEB405	9F61CEF410	9F60HJD200	\$849.00
8.25	0.5E	1	YES	C/2"/14.18"	50kA	8112/8113	9F61AEG201	9F61CEF209	9F61AEG205	9F61CEF210	9F60JE905	\$223.00
8.25	1E	1	YES	C/2"/14.18"	50kA	8112/8113	9F61AEG201	9F61CEF209	9F61AEG205	9F61CEF210	9F60JE001	\$223.00
8.25	2E	1	YES	C/2"/14.18"	50kA	8112/8113	9F61AEG201	9F61CEF209	9F61AEG205	9F61CEF210	9F60JE002	\$223.00
8.25	3E	1	YES	C/2"/14.18"	50kA	8112/8113	9F61AEG201	9F61CEF209	9F61AEG205	9F61CEF210	9F60JE003	\$223.00
8.25	5E	1	YES	C/2"/14.18"	50kA	8112/8113	9F61AEG201	9F61CEF209	9F61AEG205	9F61CEF210	9F60JE005	\$223.00
8.25	7E	1	YES	C/2"/14.18"	50kA	8112/8113	9F61AEG201	9F61CEF209	9F61AEG205	9F61CEF210	9F60JE007	\$223.00
8.25	10E	1	YES	C/2"/14.18"	50kA	8112/8113	9F61AEG201	9F61CEF209	9F61AEG205	9F61CEF210	9F60JE010	\$223.00
8.25	15E	1	YES	C/2"/14.18"	50kA	8112/8113	9F61AEG201	9F61CEF209	9F61AEG205	9F61CEF210	9F60JE015	\$223.00
8.25	20E	1	YES	D/3"/15.88"	50kA	8112/8113	9F61AEG301	9F61CEF309	9F61AEG305	9F61CEF310	9F60JE020	\$425.00
8.25	25E	1	YES	D/3"/15.88"	50kA	8112/8113	9F61AEG301	9F61CEF309	9F61AEG305	9F61CEF310	9F60JE025	\$425.00
8.25	30E	1	YES	D/3"/15.88"	50kA	8112/8113	9F61AEG301	9F61CEF309	9F61AEG305	9F61CEF310	9F60JE030	\$425.00
8.25	40E	1	YES	D/3"/15.88"	50kA	8112/8113	9F61AEG301	9F61CEF309	9F61AEG305	9F61CEF310	9F60JE040	\$425.00
8.25	50E	1	YES	D/3"/15.88"	50kA	8112/8113	9F61AEG301	9F61CEF309	9F61AEG305	9F61CEF310	9F60JE050	\$425.00
8.25	65E	1	YES	D/3"/15.88"	50kA	8112/8113	9F61AEG301	9F61CEF309	9F61AEG305	9F61CEF310	9F60JE065	\$429.00
8.25	80E	1	YES	D/3"/15.88"	50kA	8112/8113	9F61AEG301	9F61CEF309	9F61AEG305	9F61CEF310	9F60JE080	\$429.00
8.25	100E	1	YES	D/3"/15.88"	50kA	8112/8113	9F61AEG301	9F61CEF309	9F61AEG305	9F61CEF310	9F60JE100	\$429.00
8.25	125E	2	YES	DD/(2) 3"/15.88"	50kA	8112/8113	9F61AEG401	9F61CEF409	9F61AEG405	9F61CEF410	9F60HE125	\$805.00
8.25	150E	2	YES	DD/(2) 3"/15.88"	50kA	8112/8113	9F61AEG401	9F61CEF409	9F61AEG405	9F61CEF410	9F60HE150	\$805.00
8.25	200E	2	YES	DD/(2) 3"/15.88"	50kA	8112/8113	9F61AEG401	9F61CEF409	9F61AEG405	9F61CEF410	9F60HE200	\$891.00

# Current-Limiting Power Fuses

## Power Distribution Fuses

9F60 Series, "E" Rated

EJO-1

Suitable for use indoors and outdoors

### 15" Clip Centers Clip-in Mounting Indoor or Outdoor

Max. kV	Amp Rating	No. of Barrels	Indicating	Size/Diam/Length	I/C Sym.	TCC min/max GES	Fuse Support, Indoor	Fuse Support, Outdoor	Disconnecting Switch, Indoor	Disconnecting Switch, Outdoor	Product Number	List Price Prod. ID MVEG
15.5	0.5E	1	YES	C/2"/17.20"	120kA	8104/8105	9F61AGG201 (13.8 kV nominal 95 kV BIL), 9F61AGJ201 (14.4 kV nominal 110 BIL)	9F61CGL209	9F61AGG205 (13.8 kV nominal 95 kV BIL), 9F61AGJ205 (14.4 kV nominal 110 BIL)	9F61CGL210	9F60DMH905	\$273.00
15.5	1E	1	YES	C/2"/17.20"	120kA	8104/8105	9F61AGG201 (13.8 kV nominal 95 kV BIL), 9F61AGJ201 (14.4 kV nominal 110 BIL)	9F61CGL209	9F61AGG205 (13.8 kV nominal 95 kV BIL), 9F61AGJ205 (14.4 kV nominal 110 BIL)	9F61CGL210	9F60DMH001	\$273.00
15.5	2E	1	YES	C/2"/17.20"	120kA	8104/8105	9F61AGG201 (13.8 kV nominal 95 kV BIL), 9F61AGJ201 (14.4 kV nominal 110 BIL)	9F61CGL209	9F61AGG205 (13.8 kV nominal 95 kV BIL), 9F61AGJ205 (14.4 kV nominal 110 BIL)	9F61CGL210	9F60DMH002	\$273.00
15.5	3E	1	YES	C/2"/17.20"	120kA	8104/8105	9F61AGG201 (13.8 kV nominal 95 kV BIL), 9F61AGJ201 (14.4 kV nominal 110 BIL)	9F61CGL209	9F61AGG205 (13.8 kV nominal 95 kV BIL), 9F61AGJ205 (14.4 kV nominal 110 BIL)	9F61CGL210	9F60DMH003	\$273.00
15.5	5E	1	YES	C/2"/17.20"	82kA	8104/8105	9F61AGG201 (13.8 kV nominal 95 kV BIL), 9F61AGJ201 (14.4 kV nominal 110 BIL)	9F61CGL209	9F61AGG205 (13.8 kV nominal 95 kV BIL), 9F61AGJ205 (14.4 kV nominal 110 BIL)	9F61CGL210	9F60DMH005	\$273.00
15.5	7E	1	YES	C/2"/17.20"	82kA	8104/8105	9F61AGG201 (13.8 kV nominal 95 kV BIL), 9F61AGJ201 (14.4 kV nominal 110 BIL)	9F61CGL209	9F61AGG205 (13.8 kV nominal 95 kV BIL), 9F61AGJ205 (14.4 kV nominal 110 BIL)	9F61CGL210	9F60DMH007	\$273.00
15.5	10E	1	YES	C/2"/17.20"	82kA	8104/8105	9F61AGG201 (13.8 kV nominal 95 kV BIL), 9F61AGJ201 (14.4 kV nominal 110 BIL)	9F61CGL209	9F61AGG205 (13.8 kV nominal 95 kV BIL), 9F61AGJ205 (14.4 kV nominal 110 BIL)	9F61CGL210	9F60DMH010	\$273.00
15.5	15E	1	YES	D/3"/18.88"	38kA	8104/8105	9F61AGG301 (13.8 kV nominal 95 kV BIL), 9F61AGJ301 (14.4 kV nominal 110 BIL)	9F61CGL309	9F61AGG305 (13.8 kV nominal 95 kV BIL), 9F61AGJ305 (14.4 kV nominal 110 BIL)	9F61CGL310	9F60FMH015	\$660.00
15.5	20E	1	YES	D/3"/18.88"	38kA	8104/8105	9F61AGG301 (13.8 kV nominal 95 kV BIL), 9F61AGJ301 (14.4 kV nominal 110 BIL)	9F61CGL309	9F61AGG305 (13.8 kV nominal 95 kV BIL), 9F61AGJ305 (14.4 kV nominal 110 BIL)	9F61CGL310	9F60FMH020	\$660.00
15.5	25E	1	YES	D/3"/18.88"	38kA	8104/8105	9F61AGG301 (13.8 kV nominal 95 kV BIL), 9F61AGJ301 (14.4 kV nominal 110 BIL)	9F61CGL309	9F61AGG305 (13.8 kV nominal 95 kV BIL), 9F61AGJ305 (14.4 kV nominal 110 BIL)	9F61CGL310	9F60FMH025	\$660.00
15.5	30E	1	YES	D/3"/18.88"	38kA	8104/8105	9F61AGG301 (13.8 kV nominal 95 kV BIL), 9F61AGJ301 (14.4 kV nominal 110 BIL)	9F61CGL309	9F61AGG305 (13.8 kV nominal 95 kV BIL), 9F61AGJ305 (14.4 kV nominal 110 BIL)	9F61CGL310	9F60FMH030	\$660.00

# Current-Limiting Power Fuses

## Power Distribution Fuses

9F60 Series, "E" Rated

EJO-1

Suitable for use indoors and outdoors

### 15" Clip Centers Clip-in Mounting Indoor or Outdoor (Continued)

Max. kV	Amp Rating	No. of Barrels	Indicating	Size/Diam/Length	I/C Sym.	TCC min/max GES	Fuse Support, Indoor	Fuse Support, Outdoor	Disconnecting Switch, Indoor	Disconnecting Switch, Outdoor	Product Number	List Price Prod. ID MVEG
15.5	40E	1	YES	D/3"/18.88"	38kA	8104/8105	9F61AGG301 (13.8 kV nominal 95 kV BIL), 9F61AGJ301 (14.4 kV nominal 110 BIL)	9F61CGL309	9F61AGG305 (13.8 kV nominal 95 kV BIL), 9F61AGJ305 (14.4 kV nominal 110 BIL)	9F61CGL310	9F60FMH040	\$660.00
15.5	50E	1	YES	D/3"/18.88"	38kA	8104/8105	9F61AGG301 (13.8 kV nominal 95 kV BIL), 9F61AGJ301 (14.4 kV nominal 110 BIL)	9F61CGL309	9F61AGG305 (13.8 kV nominal 95 kV BIL), 9F61AGJ305 (14.4 kV nominal 110 BIL)	9F61CGL310	9F60FMH050	\$660.00
15.5	65E	2	YES	DD/(2) 3"/18.88"	38kA	8104/8105	9F61AGG401 (13.8 kV nominal 95 kV BIL), 9F61AGJ401 (14.4 kV nominal 110 BIL)	9F61CGL409	9F61AGG405 (13.8 kV nominal 95 kV BIL), 9F61AGJ405 (14.4 kV nominal 110 BIL)	9F61CGL410	9F60HMH065	\$782.00
15.5	80E	2	YES	DD/(2) 3"/18.88"	38kA	8104/8105	9F61AGG401 (13.8 kV nominal 95 kV BIL), 9F61AGJ401 (14.4 kV nominal 110 BIL)	9F61CGL409	9F61AGG405 (13.8 kV nominal 95 kV BIL), 9F61AGJ405 (14.4 kV nominal 110 BIL)	9F61CGL410	9F60HMH080	\$1047.00
15.5	100E	2	YES	DD/(2) 3"/18.88"	38kA	8104/8105	9F61AGG401 (13.8 kV nominal 95 kV BIL), 9F61AGJ401 (14.4 kV nominal 110 BIL)	9F61CGL409	9F61AGG405 (13.8 kV nominal 95 kV BIL), 9F61AGJ405 (14.4 kV nominal 110 BIL)	9F61CGL410	9F60HMH100	\$1047.00

### 21" Clip Centers Clip-in Mounting Indoor or Outdoor

Max. kV	Amp Rating	No. of Barrels	Indicating	Size/Diam/Length	I/C Sym.	TCC min/max GES	Fuse Support, Indoor	Fuse Support, Outdoor	Disconnecting Switch, Indoor	Disconnecting Switch, Outdoor	Product Number	List Price Prod. ID MVEG
25.8	0.5E	1	YES	C/2"/23.18"	45kA	8114/8115	9F61AHM201	9F61CHM209	9F61AHM205	9F61CHM210	9F60DNJ905	\$343.00
25.8	1E	1	YES	C/2"/23.18"	45kA	8114/8115	9F61AHM201	9F61CHM209	9F61AHM205	9F61CHM210	9F60DNJ001	\$343.00
25.8	2E	1	YES	C/2"/23.18"	45kA	8114/8115	9F61AHM201	9F61CHM209	9F61AHM205	9F61CHM210	9F60DNJ002	\$343.00
25.8	3E	1	YES	C/2"/23.18"	45kA	8114/8115	9F61AHM201	9F61CHM209	9F61AHM205	9F61CHM210	9F60DNJ003	\$343.00
25.8	5E	1	YES	C/2"/23.18"	45kA	8114/8115	9F61AHM201	9F61CHM209	9F61AHM205	9F61CHM210	9F60DNJ005	\$343.00
25.8	7E	1	YES	C/2"/23.18"	45kA	8114/8115	9F61AHM201	9F61CHM209	9F61AHM205	9F61CHM210	9F60DNJ007	\$343.00
25.8	10E	1	YES	C/2"/23.18"	45kA	8114/8115	9F61AHM201	9F61CHM209	9F61AHM205	9F61CHM210	9F60DNJ010	\$343.00
25.8	15E	1	YES	D/3"/24.81"	25kA	8114/8115	9F61AHM301	9F61CHM309	9F61AHM305	9F61CHM310	9F60FNJ015	\$747.00
25.8	20E	1	YES	D/3"/24.81"	25kA	8114/8115	9F61AHM301	9F61CHM309	9F61AHM305	9F61CHM310	9F60FNJ020	\$747.00
25.8	25E	1	YES	D/3"/24.81"	25kA	8114/8115	9F61AHM301	9F61CHM309	9F61AHM305	9F61CHM310	9F60FNJ025	\$747.00
25.8	30E	1	YES	D/3"/24.81"	25kA	8114/8115	9F61AHM301	9F61CHM309	9F61AHM305	9F61CHM310	9F60FNJ030	\$747.00
25.8	40E	1	YES	D/3"/24.81"	25kA	8114/8115	9F61AHM301	9F61CHM309	9F61AHM305	9F61CHM310	9F60FNJ040	\$747.00
25.8	50E	1	YES	D/3"/24.81"	25kA	8114/8115	9F61AHM301	9F61CHM309	9F61AHM305	9F61CHM310	9F60FNJ050	\$747.00
25.8	65E	2	YES	DD/(2) 3"/24.88"	25kA	8114/8115	9F61AHM401	9F61CHM409	9F61AHM405	9F61CHM410	9F60HNJ065	\$1595.00
25.8	80E	2	YES	DD/(2) 3"/24.88"	25kA	8114/8115	9F61AHM401	9F61CHM409	9F61AHM405	9F61CHM410	9F60HNJ080	\$1595.00
25.8	100E	2	YES	DD/(2) 3"/24.88"	25kA	8114/8115	9F61AHM401	9F61CHM409	9F61AHM405	9F61CHM410	9F60HNJ100	\$1595.00

# Current-Limiting Power Fuses

## Power Distribution Fuses

9F60 Series, "E" Rated

EJO-1

Suitable for use indoors and outdoors

### 27" Clip Centers Clip-in Mounting Indoor or Outdoor

Max. kV	Amp Rating	No. of Barrels	Indicating	Size/Diam/Length	I/C Sym.	TCC min/max GES	Fuse Support, Indoor	Fuse Support, Outdoor	Disconnecting Switch, Indoor	Disconnecting Switch, Outdoor	Product Number	List Price Prod. ID MVEG
38	1E	1	YES	D/3"/30.81"	45kA	8116/8117	-	9F61CJN309	-	9F61CJN310	9F60FPK001	\$848.00
38	2E	1	YES	D/3"/30.81"	45kA	8116/8117	-	9F61CJN309	-	9F61CJN310	9F60FPK002	\$848.00
38	3E	1	YES	D/3"/30.81"	45kA	8116/8117	-	9F61CJN309	-	9F61CJN310	9F60FPK003	\$848.00
38	5E	1	YES	D/3"/30.81"	45kA	8116/8117	-	9F61CJN309	-	9F61CJN310	9F60FPK005	\$848.00
38	7E	1	YES	D/3"/30.81"	45kA	8116/8117	-	9F61CJN309	-	9F61CJN310	9F60FPK007	\$848.00
38	10E	1	YES	D/3"/30.81"	45kA	8116/8117	-	9F61CJN309	-	9F61CJN310	9F60FPK010	\$848.00
38	15E	1	YES	D/3"/30.81"	13kA	8116/8117	-	9F61CJN309	-	9F61CJN310	9F60FPK015	\$1057.00
38	20E	1	YES	D/3"/30.81"	13kA	8116/8117	-	9F61CJN309	-	9F61CJN310	9F60FPK020	\$1057.00
38	25E	1	YES	D/3"/30.81"	13kA	8116/8117	-	9F61CJN309	-	9F61CJN310	9F60FPK025	\$1057.00
38	30E	1	YES	D/3"/30.81"	13kA	8116/8117	-	9F61CJN309	-	9F61CJN310	9F60FPK030	\$1057.00
38	40E	1	YES	D/3"/30.81"	13kA	8116/8117	-	9F61CJN309	-	9F61CJN310	9F60FPK040	\$1057.00
38	50E	2	YES	DD/2) 3"/30.88"	13kA	8116/8117	-	9F61CJN409	-	9F61CJN410	9F60HPK050	\$1171.00
38	65E	2	YES	DD/(2) 3"/30.88"	13kA	8116/8117	-	9F61CJN409	-	9F61CJN410	9F60HPK065	\$1171.00
38	80E	2	YES	DD/(2) 3"/30.88"	13kA	8116/8117	-	9F61CJN409	-	9F61CJN410	9F60HPK080	\$1171.00
38	1E	1	NO	D/3"/30.81"	45kA	8116/8117	-	9F61CJN309	-	9F61CJN310	9F60FPT001	\$848.00
38	2E	1	NO	D/3"/30.81"	45kA	8116/8117	-	9F61CJN309	-	9F61CJN310	9F60FPT002	\$848.00
38	3E	1	NO	D/3"/30.81"	45kA	8116/8117	-	9F61CJN309	-	9F61CJN310	9F60FPT003	\$848.00
38	5E	1	NO	D/3"/30.81"	45kA	8116/8117	-	9F61CJN309	-	9F61CJN310	9F60FPT005	\$848.00
38	7E	1	NO	D/3"/30.81"	45kA	8116/8117	-	9F61CJN309	-	9F61CJN310	9F60FPT007	\$848.00
38	10E	1	NO	D/3"/30.81"	45kA	8116/8117	-	9F61CJN309	-	9F61CJN310	9F60FPT010	\$848.00
38	15E	1	NO	D/3"/30.81"	13kA	8116/8117	-	9F61CJN309	-	9F61CJN310	9F60FPT015	\$1057.00
38	20E	1	NO	D/3"/30.81"	13kA	8116/8117	-	9F61CJN309	-	9F61CJN310	9F60FPT020	\$1057.00
38	25E	1	NO	D/3"/30.81"	13kA	8116/8117	-	9F61CJN309	-	9F61CJN310	9F60FPT025	\$1057.00
38	30E	1	NO	D/3"/30.81"	13kA	8116/8117	-	9F61CJN309	-	9F61CJN310	9F60FPT030	\$1057.00
38	40E	1	NO	D/3"/30.81"	13kA	8116/8117	-	9F61CJN309	-	9F61CJN310	9F60FPT040	\$1057.00
38	50E	2	NO	DD/(2) 3"/30.81"	13kA	8116/8117	-	9F61CJN409	-	9F61CJN410	9F60HPT050	\$1171.00
38	65E	2	NO	DD/(2) 3"/30.81"	13kA	8116/8117	-	9F61CJN409	-	9F61CJN410	9F60HPT065	\$1171.00
38	80E	2	NO	DD/(2) 3"/30.81"	13kA	8116/8117	-	9F61CJN409	-	9F61CJN410	9F60HPT080	\$1171.00

# Current-Limiting Power Fuses

## Potential Transformer

9F60 Series, "E" Rated

EJ-1

Suitable for use indoors or in an enclosure



### Product Description

Current-limiting fuses are designed to interrupt the high-fault currents and also the low-fault currents down to approximately 3 times their continuous current rating. Available from 0.625 to 15kV, from 0.5 to 3 Amps.

### 4.25" Clip Centers Clip-in Mounting Indoor or Enclosure

Max. kV	Amp Rating	No. of Barrels	Indicating	Size <sup>1</sup> /Diam Length	I/C Sym.	TCC min/max GES	Fuse Support, Indoor	Fuse Support, Outdoor	Disconnecting Switch, Indoor	Disconnecting Switch, Outdoor	Product Number	List Price Prod. ID MVEG
0.625	3E	1	YES	A/0.812"/4.625"	100kA	8108/8109	-	-	-	-	9F60AAA003	\$32.00
0.625	5E	1	YES	A/0.812"/4.625"	100kA	8108/8109	-	-	-	-	9F60AAA005	\$32.00
2.75	1E	1	YES	A/0.812"/4.625"	60kA	8108/8109	-	-	-	-	9F60AAB001	\$42.00
2.75	2E	1	YES	A/0.812"/4.625"	60kA	8108/8109	-	-	-	-	9F60AAB002	\$42.00

<sup>1</sup>Size A fuses are normally mounted directly on potential transformers. No supports, disconnect switches, or live parts are available for separate mounting.

### 6" Clip Centers Clip-in Mounting Indoor or Enclosure

Max. kV	Amp Rating	No. of Barrels	Indicating	Spare Parts (Live Parts)	Spare Parts (Clips)	Size/Diam/Length	I/C Sym.	TCC min/max GES	Product Number	List Price Prod. ID MVEG
2.75	1E	1	YES	9F61BNW450	9F61BWW460	B/1.625"/7.375"	60kA	8110/8111	9F60BBB001	\$115.00
2.75	2E	1	YES	9F61BNW450	9F61BWW460	B/1.625"/7.375"	60kA	8110/8111	9F60BBB002	\$115.00
2.75	3E	1	YES	9F61BNW450	9F61BWW460	B/1.625"/7.375"	60kA	8110/8111	9F60BBB003	\$115.00
5.5	0.5E	1	YES	9F61BNW450	9F61BWW460	B/1.625"/7.375"	80kA	8110/8111	9F60BBD905	\$118.00
5.5	1E	1	YES	9F61BNW450	9F61BWW460	B/1.625"/7.375"	80kA	8110/8111	9F60BBD001	\$118.00
5.5	2E	1	YES	9F61BNW450	9F61BWW460	B/1.625"/7.375"	80kA	8110/8111	9F60BBD002	\$118.00
5.5	3E	1	YES	9F61BNW450	9F61BWW460	B/1.625"/7.375"	80kA	8110/8111	9F60BBD003	\$118.00
5.5	0.5E	1	NO	9F61BNW450	9F61BWW460	B/1.625"/7.375"	80kA	8110/8111	9F60BBN905	\$107.00
5.5	1E	1	NO	9F61BNW450	9F61BWW460	B/1.625"/7.375"	80kA	8110/8111	9F60BBN001	\$107.00
5.5	2E	1	NO	9F61BNW450	9F61BWW460	B/1.625"/7.375"	80kA	8110/8111	9F60BBN002	\$107.00
5.5	3E	1	NO	9F61BNW450	9F61BWW460	B/1.625"/7.375"	80kA	8110/8111	9F60BBN003	\$107.00

### 8.12" Clip Centers Clip-in Mounting Indoor or Enclosure

Max. kV	Amp Rating	No. of Barrels	Indicating	Spare Parts (Live Parts)	Spare Parts (Clips)	Size/Diam/Length	I/C Sym.	TCC min/max GES	Fuse Support, Indoor	Product Number	List Price Prod. ID MVEG
2.75	1E	1	YES	9F61BNW450	9F61BWW460	B/1.625"/9.50"	60kA	8110/8111	9F61ABB101	9F60BDB001	\$111.00
2.75	2E	1	YES	9F61BNW450	9F61BWW460	B/1.625"/9.50"	60kA	8110/8111	9F61ABB101	9F60BDB002	\$111.00
2.75	3E	1	YES	9F61BNW450	9F61BWW460	B/1.625"/9.50"	60kA	8110/8111	9F61ABB101	9F60BDB003	\$111.00
5.5	0.5E	1	YES	9F61BNW450	9F61BWW460	B/1.625"/9.50"	80kA	8110/8111	9F61ABB101	9F60BDD905	\$114.00
5.5	1E	1	YES	9F61BNW450	9F61BWW460	B/1.625"/9.50"	80kA	8110/8111	9F61ABB101	9F60BDD001	\$114.00
5.5	2E	1	YES	9F61BNW450	9F61BWW460	B/1.625"/9.50"	80kA	8110/8111	9F61ABB101	9F60BDD002	\$114.00
5.5	3E	1	YES	9F61BNW450	9F61BWW460	B/1.625"/9.50"	80kA	8110/8111	9F61ABB101	9F60BDD003	\$114.00
8.25	0.5E	1	YES	9F61BNW450	9F61BWW460	B/1.625"/9.50"	80kA	8110/8111	9F61ABG101	9F60BDE905	\$115.00
8.25	1E	1	YES	9F61BNW450	9F61BWW460	B/1.625"/9.50"	80kA	8110/8111	9F61ABG101	9F60BDE001	\$115.00
8.25	2E	1	YES	9F61BNW450	9F61BWW460	B/1.625"/9.50"	80kA	8110/8111	9F61ABG101	9F60BDE002	\$115.00
8.25	3E	1	YES	9F61BNW450	9F61BWW460	B/1.625"/9.50"	80kA	8110/8111	9F61ABG101	9F60BDE003	\$115.00

# Current-Limiting Power Fuses

## Potential Transformer

9F60 Series, "E" Rated

EJ-1

Suitable for use indoors or in an enclosure

### 11.5" Clip Centers Clip-in Mounting Indoor or Enclosure

Max. kV	Amp Rating	No. of Barrels	Indicating	Spare Parts (Live Parts)	Spare Parts (Clips)	Size/Diam/Length	I/C Sym.	TCC min/max GES	Fuse support, Indoor	Product Number	List Price Prod. ID MVEG
15.5	0.5E	1	YES	9F61BNW450	9F61BWW460	B/1.625"/12.875"	120kA	8110/8111	9F61ADG101 (13.8kV, 95kV BIL), 9F61ADJ101 (14.4kV, 110kV BIL)	9F60BHH905	<b>\$167.00</b>
15.5	1E	1	YES	9F61BNW450	9F61BWW460	B/1.625"/12.875"	120kA	8110/8111	9F61ADG101 (13.8kV, 95kV BIL), 9F61ADJ101 (14.4kV, 110kV BIL)	9F60BHH001	<b>\$167.00</b>
15.5	2E	1	YES	9F61BNW450	9F61BWW460	B/1.625"/12.875"	120kA	8110/8111	9F61ADG101 (13.8kV, 95kV BIL), 9F61ADJ101 (14.4kV, 110kV BIL)	9F60BHH002	<b>\$167.00</b>
15.5	3E	1	YES	9F61BNW450	9F61BWW460	B/1.625"/12.875"	120kA	8110/8111	9F61ADG101 (13.8kV, 95kV BIL), 9F61ADJ101 (14.4kV, 110kV BIL)	9F60BHH003	<b>\$167.00</b>

# Current-Limiting Power Fuses

## Motor Starter Fuses

9F60 Series, "R" Rated

EJ-2<sup>1</sup>

Suitable for use indoors or in an enclosure



### Product Description

Backup motor starter current-limiting power fuses are designed to provide short-circuit protection of individual motors. These fuses are designed to interrupt current from 100 times the R-rating up to 50kA rms symmetrical at rated voltage. The element of these fuses is designed to withstand the cyclic motor-starting application. By definition, a back-up current-limiting fuse is "A fuse capable of interrupting all currents from the rated maximum interrupting current down to the rated minimum interrupting current." Standard IEEE C.37.40-1993 (3.1.8). Available from 2.54 to 7.20kV, From 70 to 700A (2 to 50R).

### 7" Clip Centers Clip-in Mounting UL Recognized Indoor or Enclosure

Max. kV	Amp Rating	No. of Barrels	Indicating	Spare Parts (Live Parts)	Spare Parts (Clips)	Max. Continuous Curr. (Amps)	Size/Diam/Length	I/C Sym.	TCC min/max GES	Product Number	List Price Prod. ID MVRG
2.54	2R	1	YES	9F61BNW750	9F61BWW459	70	D/3.00"/10.88"	50kA	8132/8133	9F60LCB502	\$364.00
2.54	3R	1	YES	9F61BNW750	9F61BWW459	100	D/3.00"/10.88"	50kA	8132/8133	9F60LCB503	\$364.00
2.54	4R	1	YES	9F61BNW750	9F61BWW459	130	D/3.00"/10.88"	50kA	8132/8133	9F60LCB504	\$364.00
2.54	6R	1	YES	9F61BNW750	9F61BWW459	170	D/3.00"/10.88"	50kA	8132/8133	9F60LCB506	\$710.00
2.54	9R	1	YES	9F61BNW750	9F61BWW459	200	D/3.00"/10.88"	50kA	8132/8133	9F60LCB509	\$710.00
2.54	12R	1	YES	9F61BNW750	9F61BWW459	230	D/3.00"/10.88"	50kA	8132/8133	9F60LCB512	\$710.00
2.54	18R	2	YES	9F61BNW751	-	390	DD/(2) 3.00"/10.88"	50kA	8132/8133	9F60MCB518	\$1195.00
2.54	24R	2	YES	9F61BNW751	-	450	DD/(2) 3.00"/10.88"	50kA	8132/8133	9F60MCB524	\$1195.00
2.54	2R	1	NO	9F61BNW750	9F61BWW459	70	D/3.00"/10.88"	50kA	8132/8133	9F60LCL302	\$414.00
2.54	3R	1	NO	9F61BNW750	9F61BWW459	100	D/3.00"/10.88"	50kA	8132/8133	9F60LCL303	\$414.00
2.54	4R	1	NO	9F61BNW750	9F61BWW459	130	D/3.00"/10.88"	50kA	8132/8133	9F60LCL304	\$414.00
2.54	6R	1	NO	9F61BNW750	9F61BWW459	170	D/3.00"/10.88"	50kA	8132/8133	9F60LCL306	\$805.00
2.54	9R	1	NO	9F61BNW750	9F61BWW459	200	D/3.00"/10.88"	50kA	8132/8133	9F60LCL309	\$805.00
2.54	12R	1	NO	9F61BNW750	9F61BWW459	230	D/3.00"/10.88"	50kA	8132/8133	9F60LCL312	\$805.00
2.54	18R	2	NO	9F61BNW751	-	390	DD/(2) 3.00"/10.88"	50kA	8132/8133	9F60MCL318	\$1258.00
2.54	24R	2	NO	9F61BNW751	-	450	DD/(2) 3.00"/10.88"	50kA	8132/8133	9F60MCL324	\$1258.00

### Bolted End Fittings Indoor or Enclosure

Max. kV	Amp Rating	No. of Barrels	Indicating	Max. Continuous Curr. (Amps)	Size/Diam/Length	I/C Sym.	TCC min/max GES	Fuse Support, Indoor	Product Number	List Price Prod. ID MVRG
2.54	42R	2	NO	600	KK (2) 3.45"/13.76"	50kA	8122/8123	-	9F60TQB600	\$1650.00
2.54	50R	2	NO	700	KK (2) 3.45"/13.76"	50kA	8122/8123	-	9F60TQB700	\$1650.00

### 12" Clip Centers Clip-in Mounting UL Recognized Indoor or Enclosure

Max. kV	Amp Rating	No. of Barrels	Indicating	Spare Parts (Live Parts)	Spare Parts (Clips)	Max. Continuous Curr. (Amps)	Size/Diam/Length	I/C Sym.	TCC min/max GES	Product Number	List Price Prod. ID MVRG
5.08	2R	1	YES	9F61BNW750	9F61BWW459	70	D/3.00"/15.97"	50kA	8132/8133	9F60LJD502	\$370.00
5.08	3R	1	YES	9F61BNW750	9F61BWW459	100	D/3.00"/15.97"	50kA	8132/8133	9F60LJD503	\$370.00
5.08	4R	1	YES	9F61BNW750	9F61BWW459	130	D/3.00"/15.97"	50kA	8132/8133	9F60LJD504	\$370.00
5.08	6R	1	YES	9F61BNW750	9F61BWW459	170	D/3.00"/15.97"	50kA	8132/8133	9F60LJD506	\$729.00
5.08	9R	1	YES	9F61BNW750	9F61BWW459	200	D/3.00"/15.97"	50kA	8132/8133	9F60LJD509	\$729.00
5.08	12R	1	YES	9F61BNW750	9F61BWW459	230	D/3.00"/15.97"	50kA	8132/8133	9F60LJD512	\$729.00
5.08	18R	2	YES	9F61BNW751	-	390	DD/(2) 3.00"/15.97"	50kA	8132/8133	9F60MJD518	\$1205.00
5.08	24R	2	YES	9F61BNW751	-	450	DD/(2) 3.00"/15.97"	50kA	8132/8133	9F60MJD524	\$1205.00
5.08	2R	1	NO	9F61BNW750	9F61BWW459	70	D/3.00"/15.97"	50kA	8132/8133	9F60LJN302	\$370.00
5.08	3R	1	NO	9F61BNW750	9F61BWW459	100	D/3.00"/15.97"	50kA	8132/8133	9F60LJN303	\$370.00
5.08	4R	1	NO	9F61BNW750	9F61BWW459	130	D/3.00"/15.97"	50kA	8132/8133	9F60LJN304	\$370.00
5.08	6R	1	NO	9F61BNW750	9F61BWW459	170	D/3.00"/15.97"	50kA	8132/8133	9F60LJN306	\$745.00
5.08	9R	1	NO	9F61BNW750	9F61BWW459	200	D/3.00"/15.97"	50kA	8132/8133	9F60LJN309	\$745.00
5.08	12R	1	NO	9F61BNW750	9F61BWW459	230	D/3.00"/15.97"	50kA	8132/8133	9F60LJN312	\$745.00
5.08	18R	2	NO	9F61BNW751	-	390	DD/(2) 3.00"/15.97"	50kA	8132/8133	9F60MJN318	\$1273.00
5.08	24R	2	NO	9F61BNW751	-	450	DD/(2) 3.00"/15.97"	50kA	8132/8133	9F60MJN324	\$1273.00

<sup>1</sup>EJ-2 Motor starter fuses are typically mounted on medium voltage starters. No supports or disconnect switches available.

# Current-Limiting Power Fuses

## Motor Starter Fuses

9F60 Series, "R" Rated

EJ-2<sup>1</sup>

Suitable for use indoors or in an enclosure

### 14" Clip Centers Clip-in Mounting Indoor or Enclosure

Max. kV	Amp Rating	No. of Barrels	Indicating	Spare Parts (Live Parts)	Spare Parts (Clips)	Max. Continuous Curr. (Amps)	Size/Diam/Length	I/C Sym.	TCC min/max GES	Fuse Support, Indoor	Product Number	List Price Prod. ID MVRG
5.08	30R	2	YES	9F61BNW452	–	550	EE/(2) 4"/19.12"	50kA	8132/8133	9F61AFB501	9F60NLD830	\$1620.00
5.08	36R	2	YES	9F61BNW452	–	650	EE/(2) 4"/19.12"	50kA	8132/8133	9F61AFB501	9F60NLD836	\$1620.00

### Bolted End Fittings Indoor or Enclosure

Max. kV	Amp Rating	No. of Barrels	Indicating	Max. Continuous Curr. (Amps)	Size/Diam/Length	I/C Sym.	TCC min/max GES	Fuse Support Indoor	Product Number	List Price Prod. ID MVRG
5	42R	2	YES	600	KK (2) 3.45"/18.76"	50kA	8122/8123	–	9F60TRD600	\$1656.00
5	50R	2	YES	700	KK (2) 3.45"/18.76"	50kA	8122/8123	–	9F60TRD700	\$1656.00

Bolted End Fuses, request outline drawing from factory.

### 12" Clip Centers Clip-in Mounting "A" Rated Indoor or Enclosure

Max. kV	Amp Rating	No. of Barrels	Indicating	Spare Parts (Live Parts)	Spare Parts (Clips)	Max. Continuous Curr. (Amps)	Size/Diam/Length	I/C Sym.	TCC min/max GES	Product Number	List Price Prod. ID MVRG
7.2	2A	1	YES	–	–	70	D/3.00"/15.97"	50kA	8150/8151	9F60LJE502	\$370.00
7.2	3A	1	YES	–	–	100	D/3.00"/15.97"	50kA	8150/8151	9F60LJE503	\$370.00
7.2	4A	1	YES	–	–	130	D/3.00"/15.97"	50kA	8150/8151	9F60LJE504	\$370.00
7.2	6A	1	YES	–	–	170	D/3.00"/15.97"	50kA	8150/8151	9F60LJE506	\$729.00
7.2	9A	1	YES	–	–	200	D/3.00"/15.97"	50kA	8150/8151	9F60LJE509	\$729.00
7.2	12A	1	YES	–	–	230	D/3.00"/15.97"	50kA	8150/8151	9F60LJE512	\$729.00
7.2	18A	2	YES	–	–	390	DD/(2) 3.00"/15.97"	50kA	8150/8151	9F60MJE518	\$1205.00
7.2	24A	2	YES	–	–	450	DD/(2) 3.00"/15.97"	50kA	8150/8151	9F60MJE524	\$1205.00

### Table R, Max. Continuous Current for "R/A" Fuses

Fuse "R/A" Designation	Max. Con. Current (Amps)
2	70
3	100
4	130
6	170
9	200
12	230
18	390
24	450
30	550
36	650
42	600
50	700

# Current-Limiting Power Fuses

## Fuse Supports and Disconnecting Switches

### 9F61 Series

EK-1, EKO-1, EK-3, EKO-3

#### Product Description

Fuse supports, non-disconnecting, are used primarily in potential transformer circuits, or where there is some other disconnecting or isolating device in series with the fuse in the circuit. Fuse supports can be mounted vertically or horizontally. The EKO-1 models are designed to be installed outdoors. Disconnecting switch devices have the additional feature of serving to isolate the equipment they protect. It should be noted that disconnecting switches are not load-breaking devices, therefore, the circuit must be open prior to the fuse disconnection. The EKO-3 models are designed to be installed outdoors.



#### Fuse Support - EK-1 Indoor

Max. kV	Ferrule Size/ Diam.	Clip Centers	Spare Parts (Live Parts)	Spare Parts (Clips)	Insulaor Rating - Class/NEMA Nominal Sys. (kV)	Insulator Rating - BIL (kV)	Insulator Rating - Class/NEMA Tech Ref.	Product Number	List Price Prod. ID MVACC
2.75/5.5	B/1.56"	8.12"	9F61BNW450	9F61BWW460	4.8	60	A-20	9F61ABB101	\$375.00
8.25	B/1.56"	8.12"	9F61BNW450	9F61BWW460	13.8	95	A-20	9F61ABG101	\$475.00
15.5	B/1.56"	11.5"	9F61BNW450	9F61BWW460	13.8	95	A-20	9F61ADG101	\$485.00
15.5	B/1.56"	11.5"	9F61BNW450	9F61BWW460	14.4	110	A-20	9F61ADJ101	\$775.00
2.75	C/2.00"	7"	9F61BNW451	9F61BWW457	4.8	60	A-20	9F61AAB201	\$455.00
5.5	C/2.00"	9"	9F61BNW451	9F61BWW457	4.8	60	A-20	9F61ACB201	\$455.00
15.5	C/2.00"	12"	9F61BNW451	9F61BWW457	13.8	95	A-20	9F61AEG201	\$535.00
15.5	C/2.00"	15"	9F61BNW451	9F61BWW457	13.8	95	A-20	9F61AGG201	\$535.00
15.5	C/2.00"	15"	9F61BNW451	9F61BWW457	14.4	110	A-20	9F61AGJ201	\$1085.00
25.8	C/2.00"	21"	9F61BNW743	9F61BWW457	23	150	A-20	9F61AHM201	\$1265.00
2.75	D/3.00"	7"	9F61BNW750	9F61BWW459	4.8	60	A-20	9F61AAB301	\$545.00
2.75/5.5	D/3.00"	12"	9F61BNW750	9F61BWW459	4.8	60	A-20	9F61AEB301	\$555.00
8.25	D/3.00"	12"	9F61BNW750	9F61BWW459	13.8	95	A-20	9F61AEG301	\$715.00
15.5	D/3.00"	15"	9F61BNW750	9F61BWW459	13.8	95	A-20	9F61AGG301	\$715.00
15.5	D/3.00"	15"	9F61BNW750	9F61BWW459	14.4	110	A-20	9F61AGJ301	\$1055.00
25.8	D/3.00"	21"	9F61BNW744	9F61BWW459	23	150	A-20	9F61AHM301	\$1475.00
2.75	DD/3.00"	7"	9F61BNW751	-	4.8	60	A-20	9F61AAB401	\$665.00
2.75/5.5	DD/3.00"	12"	9F61BNW751	-	4.8	60	A-20	9F61AEB401	\$695.00
8.25	DD/3.00"	12"	9F61BNW751	-	13.8	95	A-20	9F61AEG401	\$845.00
15.5	DD/3.00"	15"	9F61BNW751	-	13.8	95	A-20	9F61AGG401	\$845.00
15.5	DD/3.00"	15"	9F61BNW751	-	14.4	110	A-20	9F61AGJ401	\$1355.00
25.8	DD/3.00"	21"	9F61Aww738	-	23	150	A-20	9F61AHM401	\$1695.00
5.08	EE/4.00"	14.12"	9F61BNW452	-	4.8	60	A-20	9F61AFB501	\$975.00
15	EE/4.00"	14.12"	9F61BNW452	-	13.8	95	A-20	9F61AFG501	\$1105.00
15	EE/4.00"	14.12"	9F61BNW452	-	14.4	110	A-20	9F61AFJ501	\$1205.00
	DDDD			For Bolted-end Fuses refer to drawings.				9F61AHG001	\$1050.00
	DDDD			For Bolted-end Fuses refer to drawings.				9F61AHJ001	\$1400.00
	DDDD			For Bolted-end Fuses refer to drawings.				9F61AKB001	\$1043.00

Refer to drawings for specific dimensions.

# Current-Limiting Power Fuses

## Fuse Supports and Disconnecting Switches

9F61 Series

EK-1, EKO-1, EK-3, EKO-3

### Disconnect Switch - EK-3 Indoor

Max. kV	Ferrule Size/ Diam.	Clip Centers	Spare Parts (Live Parts)	Spare Parts (Clips)	Insulator Rating - Nominal Sys. (kV)	Insulator Rating - BIL (kV)	Insulator Rating - Class/NEMA Tech Ref.	Product Number	List Price Prod. ID MVACC
2.75	C/2.00"	7"	9F61BNW731	9F61BWW457	4.8	60	A-20	9F61AAB205	\$635.00
5.5	C/2.00"	9"	9F61BNW731	9F61BWW457	4.8	60	A-20	9F61ACB205	\$635.00
15.5	C/2.00"	12"	9F61BNW731	9F61BWW457	13.8	95	A-20	9F61AEG205	\$745.00
15.5	C/2.00"	15"	9F61BNW731	9F61BWW457	13.8	95	A-20	9F61AGG205	\$745.00
15.5	C/2.00"	15"	9F61BNW731	9F61BWW457	14.4	110	A-20	9F61AGJ205	\$1125.00
25.8	C/2.00"	21"	9F61BNW746	9F61BWW457	23	150	A-20	9F61AHM205	\$1565.00
2.75	D/3.00"	7"	9F61BNW732	9F61BWW459	4.8	60	A-20	9F61AAB305	\$765.00
2.75/5.5	D/3.00"	12"	9F61BNW732	9F61BWW459	4.8	60	A-20	9F61AEB305	\$765.00
8.25	D/3.00"	12"	9F61BNW732	9F61BWW459	13.8	95	A-20	9F61AEG305	\$895.00
15.5	D/3.00"	15"	9F61BNW732	9F61BWW459	13.8	95	A-20	9F61AGG305	\$895.00
15.5	D/3.00"	15"	9F61BNW732	9F61BWW459	14.4	110	A-20	9F61AGJ305	\$1135.00
25.8	D/3.00"	21"	9F61BNW747	9F61BWW459	23	150	A-20	9F61AHM305	\$1775.00
2.75	DD/3.00"	7"	9F61BNW461	-	4.8	60	A-20	9F61AAB405	\$1215.00
2.75/5.5	DD/3.00"	12"	9F61BNW461	-	4.8	60	A-20	9F61AEB405	\$1215.00
8.25	DD/3.00"	12"	9F61BNW461	-	13.8	95	A-20	9F61AEG405	\$1315.00
15.5	DD/3.00"	15"	9F61BNW461	-	13.8	95	A-20	9F61AGG405	\$1095.00
15.5	DD/3.00"	15"	9F61BNW461	-	14.4	110	A-20	9F61AGJ405	\$1615.00
25.8	DD/3.00"	21"	9F61BNW748	-	23	150	A-20	9F61AHM405	\$1905.00

Refer to drawings for specific dimensions.

### Fuse Support - EKO-1 Outdoor

Max. kV	Ferrule Size/Diam.	Clip Centers	Spare Parts (Live Parts)	Spare Parts (Clips)	Insulator Rating - Nominal Sys. (kV)	Insulator Rating - BIL (kV)	Insulator Rating - Class/NEMA Tech Ref.	Product Number	List Price Prod. ID MVACC
2.75/5.5/8.25	C/2.00"	12"	9F61BNW743	9F61BWW457	7.5	95	202	9F61CEF209	\$845.00
15.5	C/2.00"	15"	9F61BNW743	9F61BWW457	15	110	205	9F61CGL209	\$1025.00
25.8	C/2.00"	21"	9F61BNW743	9F61BWW457	23	150	208	9F61CHM209	\$1136.00
2.75/5.5/8.25	D/3.00"	12"	9F61BNW744	9F61BWW459	7.5	95	202	9F61CEF309	\$875.00
15.5	D/3.00"	15"	9F61BNW744	9F61BWW459	15	110	205	9F61CGL309	\$975.00
25.8	D/3.00"	21"	9F61BNW744	9F61BWW459	23	150	208	9F61CHM309	\$1115.00
38	D/3.00"	27"	9F61BNW744	9F61BWW459	34.5	200	210	9F61CJN309	\$1595.00
2.75/5.5/8.25	DD/3.00"	12"	9F61AWW738	-	7.5	95	202	9F61CEF409	\$1115.00
15.5	DD/3.00"	15"	9F61AWW738	-	15	110	205	9F61CGL409	\$1245.00
25.8	DD/3.00"	21"	9F61AWW738	-	23	150	208	9F61CHM409	\$1665.00
38	DD/3.00"	27"	9F61AWW738	-	34.5	200	210	9F61CJN409	\$2185.00
	DDDD	-	-	-	-	-	-	9F61CHL009	\$1370.00
	DDDD	-	-	-	-	-	-	9F61CKF009	\$1373.00

Refer to drawings for specific dimensions.

# Current-Limiting Power Fuses

## Fuse Supports and Disconnecting Switches

9F61 Series

EK-1, EKO-1, EK-3, EKO-3

### Disconnect Switch - EKO-3 Outdoor

Max. kV	Ferrule Size/Diam.	Clip Centers	Spare Parts (Live Parts)	Spare Parts (Clips)	Insulator Rating - Nominal Sys. (kV)	Insulator Rating - BIL (kV)	Insulator Rating - Class/NEMA Tech Ref.	Product Number	List Price Prod. ID MVACC
2.75/5.5/8.25	C/2.00"	12"	9F61BNW746	9F61BWW457	7.5	95	202	9F61CEF210	\$1215.00
15.5	C/2.00"	15"	9F61BNW746	9F61BWW457	15	110	205	9F61CGL210	\$1475.00
25.8	C/2.00"	21"	9F61BNW746	9F61BWW457	23	150	208	9F61CHM210	\$1525.00
2.75/5.5/8.25	D/3.00"	12"	9F61BNW747	9F61BWW459	7.5	95	202	9F61CEF310	\$1195.00
15.5	D/3.00"	15"	9F61BNW747	9F61BWW459	15	110	205	9F61CGL310	\$1355.00
25.8	D/3.00"	21"	9F61BNW747	9F61BWW459	23	150	208	9F61CHM310	\$1435.00
38	D/3.00"	27"	9F61BNW747	9F61BWW459	34.5	200	210	9F61CJN310	\$1875.00
2.75/5.5/8.25	DD/3.00"	12"	9F61BNW748	-	7.5	95	202	9F61CEF410	\$1525.00
15.5	DD/3.00"	15"	9F61BNW748	-	15	110	205	9F61CGL410	\$1615.00
25.8	DD/3.00"	21"	9F61BNW748	-	23	150	208	9F61CHM410	\$1665.00
38	DD/3.00"	27"	9F61BNW748	-	34.5	200	210	9F61CJN410	\$2345.00

Refer to drawings for specific dimensions.

**IMPORTANT:** When selecting a mounting for a current-limiting fuse, it is necessary that the clip centers and size agree with the fuse selected.

Prices of fuse supports and disconnecting switches include live parts for both ends.

### Hinge Trunions and Operating Eyes for Use on Disconnecting Switches

Fuse Size	Hinge Trunion Model No.	Operating Eye Model No.
C	9F61BJW397	9F61BFW394
D	9F61BKW398	9F61AWW612
DD	9F61BLW399	9F61AWW612

### Conversion Kit - D to DD for Use on Fuse Supports

Model No.	Used on Live Parts
9F61BNW402	9F61BNW751 (indoor)
	9F61AWW738 (outdoor)

# Current-Limiting Power Fuses

## Spare Parts - Fuse Supports/Disconnect Switches

9F61 Series

Live Parts/Fuse Clips

### Spare Parts (Live Parts/Fuse Clips) - Fuse Supports and Disconnect Switches

Fuse Supports and Disconnect Switches	Spare Live Parts <sup>1</sup>	Spare Fuse Clips <sup>2</sup>
9F61AAB201	9F61BNW451	9F61BWW457
9F61AAB205	9F61BNW731	9F61BWW457
9F61AAB301	9F61BNW750	9F61BWW459
9F61AAB305	9F61BNW732	9F61BWW459
9F61AAB401	9F61BNW751	N/A
9F61AAB405	9F61BNW461	N/A
9F61ABB101	9F61BNW450	9F61BWW460
9F61ABG101	9F61BNW450	9F61BWW460
9F61ACB201	9F61BNW451	9F61BWW457
9F61ACB205	9F61BNW731	9F61BWW457
9F61ADG101	9F61BNW450	9F61BWW460
9F61ADJ101	9F61BNW450	9F61BWW460
9F61AEB301	9F61BNW750	9F61BWW459
9F61AEB305	9F61BNW732	9F61BWW459
9F61AEB401	9F61BNW751	N/A
9F61AEB405	9F61BNW461	N/A
9F61AEG201	9F61BNW451	9F61BWW457
9F61AEG205	9F61BNW731	9F61BWW457
9F61AEG301	9F61BNW750	9F61BWW459
9F61AEG305	9F61BNW732	9F61BWW459
9F61AEG401	9F61BNW751	N/A
9F61AEG405	9F61BNW461	N/A
9F61AFB501	9F61BNW452	N/A
9F61AFG501	9F61BNW452	N/A
9F61AFJ501	9F61BNW452	N/A
9F61AGG201	9F61BNW451	9F61BWW457
9F61AGG205	9F61BNW731	9F61BWW457
9F61AGG301	9F61BNW750	9F61BWW459
9F61AGG305	9F61BNW732	9F61BWW459
9F61AGG401	9F61BNW751	N/A
9F61AGG405	9F61BNW461	N/A
9F61AGJ201	9F61BNW451	9F61BWW457
9F61AGJ205	9F61BNW731	9F61BWW457
9F61AGJ301	9F61BNW750	9F61BWW459
9F61AGJ305	9F61BNW732	9F61BWW459
9F61AGJ401	9F61BNW751	N/A
9F61AGJ405	9F61BNW461	N/A

### Spare Parts (Live Parts/Fuse Clips) - Fuse Supports and Disconnect Switches (Continued)

Fuse Supports and Disconnect Switches	Spare Live Parts <sup>1</sup>	Spare Fuse Clips <sup>2</sup>
9F61AHM201	9F61BNW743	9F61BWW457
9F61AHM205	9F61BNW746	9F61BWW457
9F61AHM301	9F61BNW744	9F61BWW459
9F61AHM305	9F61BNW747	9F61BWW459
9F61AHM401	9F61AWW738	N/A
9F61AHM405	9F61BNW748	N/A
9F61CEF209	9F61BNW743	9F61BWW457
9F61CEF210	9F61BNW746	9F61BWW457
9F61CEF309	9F61BNW744	9F61BWW459
9F61CEF310	9F61BNW747	9F61BWW459
9F61CEF409	9F61AWW738	N/A
9F61CEF410	9F61BNW748	N/A
9F61CGL209	9F61BNW743	9F61BWW457
9F61CGL210	9F61BNW746	9F61BWW457
9F61CGL309	9F61BNW744	9F61BWW459
9F61CGL310	9F61BNW747	9F61BWW459
9F61CGL409	9F61AWW738	N/A
9F61CGL410	9F61BNW748	N/A
9F61CHM209	9F61BNW743	9F61BWW457
9F61CHM210	9F61BNW746	9F61BWW457
9F61CHM309	9F61BNW744	9F61BWW459
9F61CHM310	9F61BNW747	9F61BWW459
9F61CHM409	9F61AWW738	N/A
9F61CHM410	9F61BNW748	N/A
9F61CJN309	9F61BNW744	9F61BWW459
9F61CJN310	9F61BNW747	9F61BWW459
9F61CJN409	9F61AWW738	N/A
9F61CJN410	9F61BNW748	N/A

<sup>1</sup>LIVE PARTS: Order (1) Live Parts for each Fuse Support and Disconnecting Switch (includes live parts for both ends).

<sup>2</sup>FUSE CLIPS: Order (2) Fuse Clips for each Fuse Support and order (1) Fuse Clip for each Disconnecting Switch.

# Current-Limiting Power Fuses

## Spare Parts (Live Parts/Fuse Clips) - Potential Transformer Fuses

Potential Transformer Product Number	Spare Live Parts <sup>1</sup>	Spare Fuse Clips <sup>2</sup>
9F60AAA__	N/A	N/A
9F60AAB__	N/A	N/A
9F60BBB__	9F61BNW450	9F61BWW460
9F60BBD__	9F61BNW450	9F61BWW460
9F60BBN__	9F61BNW450	9F61BWW460
9F60BDB__	9F61BNW450	9F61BWW460
9F60BDD__	9F61BNW450	9F61BWW460
9F60BDE__	9F61BNW450	9F61BWW460
9F60BHH__	9F61BNW450	9F61BWW460

## Spare Parts (Live Parts/Fuse Clips) - Motor Starter Fuses

Motor Starter Product Number	Spare Live Parts <sup>1</sup>	Spare Fuse Clips <sup>2</sup>
9F60LCB5__	9F61BNW750	9F61BWW459
9F60LCL3__	9F61BNW750	9F61BWW459
9F60LJD5__	9F61BNW750	9F61BWW459
9F60LJN3__	9F61BNW750	9F61BWW459
9F60MCB5__	9F61BNW751	N/A
9F60MCL3__	9F61BNW751	N/A
9F60MJD5__	9F61BNW751	N/A
9F60MJN3__	9F61BNW751	N/A
9F60NLD8__	9F61BNW452	N/A
9F60TQB__	N/A	N/A
9F60TRD__	N/A	N/A

<sup>1</sup>LIVE PARTS: Order (1) Live Parts for each Fuse Support and Disconnecting Switch (includes live parts for both ends).

<sup>2</sup>FUSE CLIPS: Order (2) Fuse Clips for each Fuse Support and order (1) Fuse Clip for each Disconnecting Switch.

# Current-Limiting Power Fuses

## External Transformer Protection (ETP) Fuses

### 9F59U Series

#### Product Description

Backup current-limiting fuses designed to protect transformers are used in series with another protective device (such as an expulsion fuse). This combination limits the high-fault current to a safe level, thus providing protection through the complete range. As its name implies, the “ETP” is for External Transformer Protection. For conventional transformers protected by expulsion-fuse cutouts, the ETP can be installed in series with the cutout. For self-protected transformers, the ETP can be applied on the high-voltage bushing in series with the internal transformerexpulsion fuse. From 8.3kV to 23kV and from 8T to 80K. Interrupting rating 50 kA Sym.



#### SURE GUARD

ETP Rating	ETP Hardware	Minimum kV Class	Recommended Max. Expulsion	Max. Total I <sup>2</sup> T	I.C. Amperes	Min. Melt Curve	Total Clear Curve	Let-through Curve	Product Number	List Price Prod. ID MVETP
8.3, Spade & Stud	Without Hardware	15	8T or 12K	16000	440	GES-8228A	GES-8229A	GET-6693A	9F59UBC101	\$22.00
8.3, Spade & Stud	(1) Adapter	15	8T or 12K	16000	440	GES-8228A	GES-8229A	GET-6693A	9F59UBC111	\$29.00
8.3, Spade & Stud	(1) Eyebolt Terminal	15	8T or 12K	16000	440	GES-8228A	GES-8229A	GET-6693A	9F59UBC121	\$31.00
8.3, Spade & Stud	(1) Parallel Groove	15	8T or 12K	16000	440	GES-8228A	GES-8229A	GET-6693A	9F59UBC131	\$33.00
8.3, Spade & Spade	Without Hardware	15	8T or 12K	16000	440	GES-8228A	GES-8229A	GET-6693A	9F59UBC201	\$26.00
8.3, Spade & Spade	(1) Adapter	15	8T or 12K	16000	440	GES-8228A	GES-8229A	GET-6693A	9F59UBC211	\$33.00
8.3, Spade & Spade	(1) Eyebolt Terminal	15	8T or 12K	16000	440	GES-8228A	GES-8229A	GET-6693A	9F59UBC221	\$35.00
8.3, Spade & Spade	(1) Parallel Groove	15	8T or 12K	16000	440	GES-8228A	GES-8229A	GET-6693A	9F59UBC231	\$37.00
8.3, Spade & Spade	Adapter & eyebolt terminal	15	8T or 12K	16000	440	GES-8228A	GES-8229A	GET-6693A	9F59UBC241	\$42.00
8.3, Spade & Spade	Adapter & parallel groove	15	8T or 12K	16000	440	GES-8228A	GES-8229A	GET-6693A	9F59UBC251	\$44.00
8.3, Spade & Spade	Eyebolt terminal & parallel groove	15	8T or 12K	16000	440	GES-8228A	GES-8229A	GET-6693A	9F59UBC261	\$46.00
8.3, Spade & Spade	(2) Eyebolt terminals	15	8T or 12K	16000	440	GES-8228A	GES-8229A	GET-6693A	9F59UBC271	\$35.00
8.3, Spade & Spade	(2) Parallel groove	15	8T or 12K	16000	440	GES-8228A	GES-8229A	GET-6693A	9F59UBC281	\$37.00
8.3, Spade & Stud	Without Hardware	15	15T or 25K	50000	450	GES-8228A	GES-8229A	GET-6693A	9F59UBC102	\$22.00
8.3, Spade & Stud	(1) Adapter	15	15T or 25K	50000	450	GES-8228A	GES-8229A	GET-6693A	9F59UBC112	\$29.00
8.3, Spade & Stud	(1) Eyebolt Terminal	15	15T or 25K	50000	450	GES-8228A	GES-8229A	GET-6693A	9F59UBC122	\$31.00
8.3, Spade & Stud	(1) Parallel Groove	15	15T or 25K	50000	450	GES-8228A	GES-8229A	GET-6693A	9F59UBC132	\$33.00
8.3, Spade & Spade	Without Hardware	15	15T or 25K	50000	450	GES-8228A	GES-8229A	GET-6693A	9F59UBC202	\$26.00
8.3, Spade & Spade	(1) Adapter	15	15T or 25K	50000	450	GES-8228A	GES-8229A	GET-6693A	9F59UBC212	\$33.00
8.3, Spade & Spade	(1) Eyebolt Terminal	15	15T or 25K	50000	450	GES-8228A	GES-8229A	GET-6693A	9F59UBC222	\$35.00
8.3, Spade & Spade	(1) Parallel Groove	15	15T or 25K	50000	450	GES-8228A	GES-8229A	GET-6693A	9F59UBC232	\$37.00
8.3, Spade & Spade	Adapter & eyebolt terminal	15	15T or 25K	50000	450	GES-8228A	GES-8229A	GET-6693A	9F59UBC242	\$42.00
8.3, Spade & Spade	Adapter & parallel groove	15	15T or 25K	50000	450	GES-8228A	GES-8229A	GET-6693A	9F59UBC252	\$44.00
8.3, Spade & Spade	Eyebolt terminal & parallel groove	15	15T or 25K	50000	450	GES-8228A	GES-8229A	GET-6693A	9F59UBC262	\$46.00
8.3, Spade & Spade	(2) Eyebolt terminals	15	15T or 25K	50000	450	GES-8228A	GES-8229A	GET-6693A	9F59UBC272	\$35.00

# Current-Limiting Power Fuses

## External Transformer Protection (ETP) Fuses

9F59U Series

### SURE GUARD (Continued)

ETP Rating	ETP Hardware	kV Class	Recommended Max. Expulsion	Minimum Max. Total I <sup>2</sup> T	I.C. Amperes	Min. Melt Curve	Total Clear Curve	Let-through Curve	Product Number	List Price Prod. ID MVETP
8.3, Spade & Spade	(2) Parallel groove	15	15T or 25K	50000	450	GES-8228A	GES-8229A	GET-6693A	9F59UBC282	\$37.00
8.3, Spade & Stud	Without Hardware	15	25T or 40K	140000	560	GES-8228A	GES-8229A	GET-6693A	9F59UBC104	\$22.00
8.3, Spade & Stud	(1) Adapter	15	25T or 40K	140000	560	GES-8228A	GES-8229A	GET-6693A	9F59UBC114	\$29.00
8.3, Spade & Stud	(1) Eyebolt Terminal	15	25T or 40K	140000	560	GES-8228A	GES-8229A	GET-6693A	9F59UBC124	\$31.00
8.3, Spade & Stud	(1) Parallel Groove	15	25T or 40K	140000	560	GES-8228A	GES-8229A	GET-6693A	9F59UBC134	\$33.00
8.3, Spade & Spade	Without Hardware	15	25T or 40K	140000	560	GES-8228A	GES-8229A	GET-6693A	9F59UBC204	\$30.00
8.3, Spade & Spade	(1) Adapter	15	25T or 40K	140000	560	GES-8228A	GES-8229A	GET-6693A	9F59UBC214	\$37.00
8.3, Spade & Spade	(1) Eyebolt Terminal	15	25T or 40K	140000	560	GES-8228A	GES-8229A	GET-6693A	9F59UBC224	\$39.00
8.3, Spade & Spade	(1) Parallel Groove	15	25T or 40K	140000	560	GES-8228A	GES-8229A	GET-6693A	9F59UBC234	\$41.00
8.3, Spade & Spade	Adapter & eyebolt terminal	15	25T or 40K	140000	560	GES-8228A	GES-8229A	GET-6693A	9F59UBC244	\$46.00
8.3, Spade & Spade	Adapter & parallel groove	15	25T or 40K	140000	560	GES-8228A	GES-8229A	GET-6693A	9F59UBC254	\$48.00
8.3, Spade & Spade	Eyebolt terminal & parallel groove	15	25T or 40K	140000	560	GES-8228A	GES-8229A	GET-6693A	9F59UBC264	\$50.00
8.3, Spade & Spade	(2) Eyebolt terminals	15	25T or 40K	140000	560	GES-8228A	GES-8229A	GET-6693A	9F59UBC274	\$39.00
8.3, Spade & Spade	(2) Parallel groove	15	25T or 40K	140000	560	GES-8228A	GES-8229A	GET-6693A	9F59UBC284	\$41.00
8.3, Spade & Spade	Without Hardware	15	50T or 80K	88000	1200	GES-8228A	GES-8229A	GET-6693A	9F59UBC208	\$40.00
8.3, Spade & Spade	(1) Adapter	15	50T or 80K	88000	1200	GES-8228A	GES-8229A	GET-6693A	9F59UBC218	\$47.00
8.3, Spade & Spade	(1) Eyebolt Terminal	15	50T or 80K	88000	1200	GES-8228A	GES-8229A	GET-6693A	9F59UBC228	\$49.00
8.3, Spade & Spade	(1) Parallel Groove	15	50T or 80K	88000	1200	GES-8228A	GES-8229A	GET-6693A	9F59UBC238	\$51.00
8.3, Spade & Spade	Adapter & eyebolt terminal	15	50T or 80K	88000	1200	GES-8228A	GES-8229A	GET-6693A	9F59UBC248	\$56.00
8.3, Spade & Spade	Adapter & parallel groove	15	50T or 80K	88000	1200	GES-8228A	GES-8229A	GET-6693A	9F59UBC258	\$58.00
8.3, Spade & Spade	Eyebolt terminal & parallel groove	15	50T or 80K	88000	1200	GES-8228A	GES-8229A	GET-6693A	9F59UBC268	\$60.00
8.3, Spade & Spade	(2) Eyebolt terminals	15	50T or 80K	88000	1200	GES-8228A	GES-8229A	GET-6693A	9F59UBC278	\$49.00
8.3, Spade & Spade	(2) Parallel groove	15	50T or 80K	88000	1200	GES-8228A	GES-8229A	GET-6693A	9F59UBC288	\$51.00
15.5, Spade & Stud	Without Hardware	25	8T or 12K	16000	510	GES-8228A	GES-8229A	GET-6693A	9F59UBD101	\$24.00
15.5, Spade & Stud	(1) Adapter	25	8T or 12K	16000	510	GES-8228A	GES-8229A	GET-6693A	9F59UBD111	\$31.00
15.5, Spade & Stud	(1) Eyebolt Terminal	25	8T or 12K	16000	510	GES-8228A	GES-8229A	GET-6693A	9F59UBD121	\$33.00
15.5, Spade & Stud	(1) Parallel Groove	25	8T or 12K	16000	510	GES-8228A	GES-8229A	GET-6693A	9F59UBD131	\$35.00
15.5, Spade & Spade	Without Hardware	25	8T or 12K	16000	510	GES-8228A	GES-8229A	GET-6693A	9F59UBD201	\$28.00
15.5, Spade & Spade	(1) Adapter	25	8T or 12K	16000	510	GES-8228A	GES-8229A	GET-6693A	9F59UBD211	\$35.00
15.5, Spade & Spade	(1) Eyebolt Terminal	25	8T or 12K	16000	510	GES-8228A	GES-8229A	GET-6693A	9F59UBD221	\$37.00
15.5, Spade & Spade	(1) Parallel Groove	25	8T or 12K	16000	510	GES-8228A	GES-8229A	GET-6693A	9F59UBD231	\$39.00
15.5, Spade & Spade	Adapter & eyebolt terminal	25	8T or 12K	16000	510	GES-8228A	GES-8229A	GET-6693A	9F59UBD241	\$44.00
15.5, Spade & Spade	Adapter & parallel groove	25	8T or 12K	16000	510	GES-8228A	GES-8229A	GET-6693A	9F59UBD251	\$46.00
15.5, Spade & Spade	Eyebolt terminal & parallel groove	25	8T or 12K	16000	510	GES-8228A	GES-8229A	GET-6693A	9F59UBD261	\$48.00
15.5, Spade & Spade	(2) Eyebolt terminals	25	8T or 12K	16000	510	GES-8228A	GES-8229A	GET-6693A	9F59UBD271	\$37.00
15.5, Spade & Spade	(2) Parallel groove	25	8T or 12K	16000	510	GES-8228A	GES-8229A	GET-6693A	9F59UBD281	\$39.00

# Current-Limiting Power Fuses

## External Transformer Protection (ETP) Fuses

### 9F59U Series

#### SURE GUARD (Continued)

ETP Rating	ETP Hardware	kV Class	Recommended Max. Expulsion	Max. Total I <sup>2</sup> T	Minimum I.C. Amperes	Min. Melt Curve	Total Clear Curve	Let-through Curve	Product Number	List Price Prod. ID MVETP
15.5, Spade & Stud	Without Hardware	25	15T or 25K	50000	480	GES-8228A	GES-8229A	GET-6693A	9F59UBD102	\$24.00
15.5, Spade & Stud	(1) Adapter	25	15T or 25K	50000	480	GES-8228A	GES-8229A	GET-6693A	9F59UBD112	\$31.00
15.5, Spade & Stud	(1) Eyebolt Terminal	25	15T or 25K	50000	480	GES-8228A	GES-8229A	GET-6693A	9F59UBD122	\$33.00
15.5, Spade & Stud	(1) Parallel Groove	25	15T or 25K	50000	480	GES-8228A	GES-8229A	GET-6693A	9F59UBD132	\$35.00
15.5, Spade & Spade	Without Hardware	25	15T or 25K	50000	480	GES-8228A	GES-8229A	GET-6693A	9F59UBD202	\$28.00
15.5, Spade & Spade	(1) Adapter	25	15T or 25K	50000	480	GES-8228A	GES-8229A	GET-6693A	9F59UBD212	\$35.00
15.5, Spade & Spade	(1) Eyebolt Terminal	25	15T or 25K	50000	480	GES-8228A	GES-8229A	GET-6693A	9F59UBD222	\$37.00
15.5, Spade & Spade	(1) Parallel Groove	25	15T or 25K	50000	480	GES-8228A	GES-8229A	GET-6693A	9F59UBD232	\$39.00
15.5, Spade & Spade	Adapter & eyebolt terminal	25	15T or 25K	50000	480	GES-8228A	GES-8229A	GET-6693A	9F59UBD242	\$44.00
15.5, Spade & Spade	Adapter & parallel groove	25	15T or 25K	50000	480	GES-8228A	GES-8229A	GET-6693A	9F59UBD252	\$46.00
15.5, Spade & Spade	Eyebolt terminal & parallel groove	25	15T or 25K	50000	480	GES-8228A	GES-8229A	GET-6693A	9F59UBD262	\$48.00
15.5, Spade & Spade	(2) Eyebolt terminals	25	15T or 25K	50000	480	GES-8228A	GES-8229A	GET-6693A	9F59UBD272	\$37.00
15.5, Spade & Spade	(2) Parallel groove	25	15T or 25K	50000	480	GES-8228A	GES-8229A	GET-6693A	9F59UBD282	\$39.00
15.5, Spade & Stud	Without Hardware	25	25T or 40K	140000	890	GES-8228A	GES-8229A	GET-6693A	9F59UBD104	\$24.00
15.5, Spade & Stud	(1) Adapter	25	25T or 40K	140000	890	GES-8228A	GES-8229A	GET-6693A	9F59UBD114	\$31.00
15.5, Spade & Stud	(1) Eyebolt Terminal	25	25T or 40K	140000	890	GES-8228A	GES-8229A	GET-6693A	9F59UBD124	\$33.00
15.5, Spade & Stud	(1) Parallel Groove	25	25T or 40K	140000	890	GES-8228A	GES-8229A	GET-6693A	9F59UBD134	\$35.00
15.5, Spade & Spade	Without Hardware	25	25T or 40K	140000	890	GES-8228A	GES-8229A	GET-6693A	9F59UBD204	\$32.00
15.5, Spade & Spade	(1) Adapter	25	25T or 40K	140000	890	GES-8228A	GES-8229A	GET-6693A	9F59UBD214	\$39.00
15.5, Spade & Spade	(1) Eyebolt Terminal	25	25T or 40K	140000	890	GES-8228A	GES-8229A	GET-6693A	9F59UBD224	\$41.00
15.5, Spade & Spade	(1) Parallel Groove	25	25T or 40K	140000	890	GES-8228A	GES-8229A	GET-6693A	9F59UBD234	\$43.00
15.5, Spade & Spade	Adapter & eyebolt terminal	25	25T or 40K	140000	890	GES-8228A	GES-8229A	GET-6693A	9F59UBD244	\$48.00
15.5, Spade & Spade	Adapter & parallel groove	25	25T or 40K	140000	890	GES-8228A	GES-8229A	GET-6693A	9F59UBD254	\$50.00
15.5, Spade & Spade	Eyebolt terminal & parallel groove	25	25T or 40K	140000	890	GES-8228A	GES-8229A	GET-6693A	9F59UBD264	\$52.00
15.5, Spade & Spade	(2) Eyebolt terminals	25	25T or 40K	140000	890	GES-8228A	GES-8229A	GET-6693A	9F59UBD274	\$41.00
15.5, Spade & Spade	(2) Parallel groove	25	25T or 40K	140000	890	GES-8228A	GES-8229A	GET-6693A	9F59UBD284	\$43.00
15.5, Spade & Spade	Without Hardware	25	50T or 80K	88000	1200	GES-8228A	GES-8229A	GET-6693A	9F59UBD208	\$42.00
15.5, Spade & Spade	(1) Adapter	25	50T or 80K	88000	1200	GES-8228A	GES-8229A	GET-6693A	9F59UBD218	\$49.00
15.5, Spade & Spade	(1) Eyebolt Terminal	25	50T or 80K	88000	1200	GES-8228A	GES-8229A	GET-6693A	9F59UBD228	\$51.00
15.5, Spade & Spade	(1) Parallel Groove	25	50T or 80K	88000	1200	GES-8228A	GES-8229A	GET-6693A	9F59UBD238	\$53.00
15.5, Spade & Spade	Adapter & eyebolt terminal	25	50T or 80K	88000	1200	GES-8228A	GES-8229A	GET-6693A	9F59UBD248	\$58.00
15.5, Spade & Spade	Adapter & parallel groove	25	50T or 80K	88000	1200	GES-8228A	GES-8229A	GET-6693A	9F59UBD258	\$60.00
15.5, Spade & Spade	Eyebolt terminal & parallel groove	25	50T or 80K	88000	1200	GES-8228A	GES-8229A	GET-6693A	9F59UBD268	\$62.00
15.5, Spade & Spade	(2) Eyebolt terminals	25	50T or 80K	88000	1200	GES-8228A	GES-8229A	GET-6693A	9F59UBD278	\$51.00
15.5, Spade & Spade	(2) Parallel groove	25	50T or 80K	88000	1200	GES-8228A	GES-8229A	GET-6693A	9F59UBD288	\$53.00
23.0, Spade & Stud	Without Hardware	35	8T or 12K	16000	280	GES-8228A	GES-8229A	GET-6693A	9F59UBE101	\$30.00

# Current-Limiting Power Fuses

## External Transformer Protection (ETP) Fuses 9F59U Series

### SURE GUARD (Continued)

ETP Rating	ETP Hardware	kV Class	Recommended Max. Expulsion	Max. Total I <sup>T</sup>	Minimum I.C. Amperes	Min. Melt Curve	Total Clear Curve	Let-through Curve	Product Number	List Price Prod. ID MVETP
23.0, Spade & Stud	(1) Adapter	35	8T or 12K	16000	280	GES-8228A	GES-8229A	GET-6693A	9F59UBE111	\$37.00
23.0, Spade & Stud	(1) Eyebolt Terminal	35	8T or 12K	16000	280	GES-8228A	GES-8229A	GET-6693A	9F59UBE121	\$39.00
23.0, Spade & Stud	(1) Parallel Groove	35	8T or 12K	16000	280	GES-8228A	GES-8229A	GET-6693A	9F59UBE131	\$41.00
23.0, Spade & Spade	Without Hardware	35	8T or 12K	16000	280	GES-8228A	GES-8229A	GET-6693A	9F59UBE201	\$34.00
23.0, Spade & Spade	(1) Adapter	35	8T or 12K	16000	280	GES-8228A	GES-8229A	GET-6693A	9F59UBE211	\$41.00
23.0, Spade & Spade	(1) Eyebolt Terminal	35	8T or 12K	16000	280	GES-8228A	GES-8229A	GET-6693A	9F59UBE221	\$43.00
23.0, Spade & Spade	(1) Parallel Groove	35	8T or 12K	16000	280	GES-8228A	GES-8229A	GET-6693A	9F59UBE231	\$45.00
23.0, Spade & Spade	Adapter & eyebolt terminal	35	8T or 12K	16000	280	GES-8228A	GES-8229A	GET-6693A	9F59UBE241	\$50.00
23.0, Spade & Spade	Adapter & parallel groove	35	8T or 12K	16000	280	GES-8228A	GES-8229A	GET-6693A	9F59UBE251	\$52.00
23.0, Spade & Spade	Eyebolt terminal & parallel groove	35	8T or 12K	16000	280	GES-8228A	GES-8229A	GET-6693A	9F59UBE261	\$54.00
23.0, Spade & Spade	(2) Eyebolt terminals	35	8T or 12K	16000	280	GES-8228A	GES-8229A	GET-6693A	9F59UBE271	\$43.00
23.0, Spade & Spade	(2) Parallel groove	35	8T or 12K	16000	280	GES-8228A	GES-8229A	GET-6693A	9F59UBE281	\$45.00
23.0, Spade & Stud	Without Hardware	35	15T or 25K	70000	460	GES-8228A	GES-8229A	GET-6693A	9F59UBE102	\$30.00
23.0, Spade & Stud	(1) Adapter	35	15T or 25K	70000	460	GES-8228A	GES-8229A	GET-6693A	9F59UBE112	\$37.00
23.0, Spade & Stud	(1) Eyebolt Terminal	35	15T or 25K	70000	460	GES-8228A	GES-8229A	GET-6693A	9F59UBE122	\$39.00
23.0, Spade & Stud	(1) Parallel Groove	35	15T or 25K	70000	460	GES-8228A	GES-8229A	GET-6693A	9F59UBE132	\$41.00
23.0, Spade & Spade	Without Hardware	35	15T or 25K	70000	460	GES-8228A	GES-8229A	GET-6693A	9F59UBE202	\$34.00
23.0, Spade & Spade	(1) Adapter	35	15T or 25K	70000	460	GES-8228A	GES-8229A	GET-6693A	9F59UBE212	\$41.00
23.0, Spade & Spade	(1) Eyebolt Terminal	35	15T or 25K	70000	460	GES-8228A	GES-8229A	GET-6693A	9F59UBE222	\$43.00
23.0, Spade & Spade	(1) Parallel Groove	35	15T or 25K	70000	460	GES-8228A	GES-8229A	GET-6693A	9F59UBE232	\$45.00
23.0, Spade & Spade	Adapter & eyebolt terminal	35	15T or 25K	70000	460	GES-8228A	GES-8229A	GET-6693A	9F59UBE242	\$50.00
23.0, Spade & Spade	Adapter & parallel groove	35	15T or 25K	70000	460	GES-8228A	GES-8229A	GET-6693A	9F59UBE252	\$52.00
23.0, Spade & Spade	Eyebolt terminal & parallel groove	35	15T or 25K	70000	460	GES-8228A	GES-8229A	GET-6693A	9F59UBE262	\$54.00
23.0, Spade & Spade	(2) Eyebolt terminals	35	15T or 25K	70000	460	GES-8228A	GES-8229A	GET-6693A	9F59UBE272	\$43.00
23.0, Spade & Spade	(2) Parallel groove	35	15T or 25K	70000	460	GES-8228A	GES-8229A	GET-6693A	9F59UBE282	\$45.00

### Hardware Options

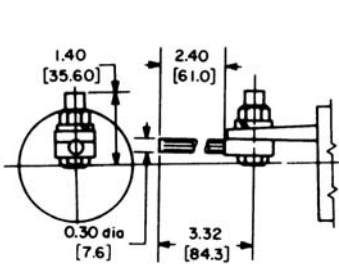


Fig. 1. Adapter only  
9F59AAW007

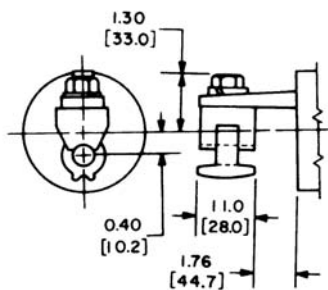


Fig. 2. Eyebolt only,  
for 6-2/0 cable  
9F59AAW008

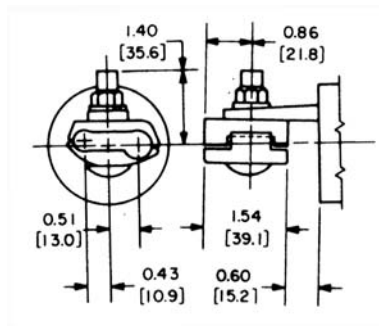


Fig. 3. Parallel groove only,  
for 2/0 to 250MCM cable  
9F59AAW009

### Product Nos. Suitable for Parallel Application

Product Number	Max kV
9F59UBC208	8.3
9F59UBC218	8.3
9F59UBC228	8.3
9F59UBC238	8.3
9F59UBC248	8.3
9F59UBC258	8.3
9F59UBC268	8.3
9F59UBC278	8.3
9F59UBC288	8.3
9F59UBD208	15.5
9F59UBD218	15.5
9F59UBD228	15.5
9F59UBD238	15.5
9F59UBD248	15.5
9F59UBD258	15.5
9F59UBD268	15.5
9F59UBD278	15.5
9F59UBD288	15.5

# Current-Limiting Power Fuses

## Domestic USA General Terms and Conditions of Sale

**1. Scope:** The following terms and conditions constitute the full and final contract for the sale of products or services by Ferraz Shawmut LLC to the Buyer and supersede all prior written or oral communications between Ferraz Shawmut, or its representatives, and the Buyer. No modifications to these terms and conditions shall be binding on Ferraz Shawmut unless they are in writing and signed by an executive officer of Ferraz Shawmut. Notwithstanding any contrary language in the Buyer's purchase order, correspondence, or other form of communication, Buyer shall be bound by these Terms and Conditions when it sends a purchase order, accepts delivery from Ferraz Shawmut of product or service or otherwise indicates acceptance of this contract. Any differing or additional terms and conditions proposed by the Buyer are rejected by Ferraz Shawmut unless expressly agreed to in writing by an authorized executive of Ferraz Shawmut.

**2. Prices:** All prices and terms are subject to change without notice. Prices shall be those in effect at the time of shipment.

**3. Order Acceptance:** All orders and contracts must be approved by an official of Ferraz Shawmut at Headquarters, Newburyport, MA. Orders may be accepted in whole or in part.

**4. Terms of Payment:** Terms of payment for authorized Distributors are 2%, 15th proximo, net 25th proximo, from date of invoice. Terms of payment for all other classification of Buyers are net, 25th proximo, from the date of invoice. If the financial condition of the Buyer at the time the merchandise is ready for shipment does not justify the terms of payment specified, the Buyer may be called upon, before shipment, to arrange terms of payment satisfactory to Ferraz Shawmut. If at any time the Buyer fails to make any payment to Ferraz Shawmut when due, Ferraz Shawmut shall be entitled, among other things, to: deny any further extensions of credit to the Buyer; declare all unpaid amounts at the time outstanding from the Buyer to be immediately due and payable; and otherwise exercise all rights and remedies against the Buyer that may be available under the Buyer's arrangements with Ferraz Shawmut or at law. The Buyer shall pay to Ferraz Shawmut any and all reasonable expenses incurred by Ferraz Shawmut for collection from the Buyer due and unpaid, including reasonable interest, attorneys' fees and all related costs.

**5. Minimum Billing:** Orders less than \$150 net value, one shipment, are subject to shipping and handling charges of \$75.00.

**6. Shipment:** All shipments shall be made F.O.B. at the point of shipment. Ferraz Shawmut shall not be liable for any delay in shipment. The contract of sale shall in no event be subject to cancellation by the Buyer, due either to delay in delivery or to any other cause, except by mutual written agreement. Ferraz Shawmut shall select shipping method. Any cost associated with the Buyer's request for special shipping; packaging, handling, method or other shall be paid by the Buyer in total.

**7. Delivery:** Ferraz Shawmut reserves the right to make partial shipments. Delay in a balance of order shall not relieve Buyer from its obligation to accept delivery of the balance of the order. Delivery dates provided in quotations or order acknowledgments are approximate and not guaranteed.

**8. Termination:** Orders shall not be subject to termination without written consent of Ferraz Shawmut. In such an event the Buyer shall forthwith pay Ferraz Shawmut the contract price for all finished units and a sum, which shall be determined by mutual agreement, in consideration of work in process and of commitments made by Ferraz Shawmut, or in absence of such an agreement, a sum representing (1) actual expenditures made by Ferraz Shawmut in connection with the uncompleted portion of the order, including reasonable cancellation charges paid by Ferraz Shawmut on account of commitments under the order and (2) reasonable estimated profits on the uncompleted portion of the order multiplied by the percentage of completion of the uncompleted portion of the order.

**9. Returns:** All returns must be approved in advance by Ferraz Shawmut headquarters, Newburyport, MA. Only standard stock products will be considered for return. Obsolete and non-stock products are not returnable. Returned material must be in new condition. Material must have been purchased by Buyer directly from Ferraz Shawmut. A restocking charge may apply.

**10. Taxes:** Any present or future sales, use, occupation, or other tax, which may be imposed is not included in the price and shall be paid by the Buyer.

**11. Title and Risk of Loss:** Title and right to possession of any material remain with Ferraz Shawmut until all payments are made in full. Buyer agrees to do all acts necessary to protect such right and title. Risk of loss however shall pass to Buyer at the time of delivery to the common carrier or licensed truckers.

**12. Credit:** Ferraz Shawmut reserves the right at any time to revoke any credit extended to Buyer if Buyer fails to pay for any shipments when due or if in Ferraz Shawmut's opinion there is a material change in Buyer's financial condition. Ferraz Shawmut may, at its option, hold or cancel any accepted order if Buyer fails to pay any invoice when due.

**13. Defective Material and Workmanship Warranty:** Should latent defects in materials and workmanship develop within one year from date of shipment, Ferraz Shawmut will either repair the defective part or parts, free of charge, F.O.B. point of shipment, or supply a new part or parts, free of charge, F.O.B. point of shipment; provided Ferraz Shawmut is given opportunity to confirm the existence of defects. Ferraz Shawmut is not liable for contingent or consequential damage or expense in connection with the operation, repair, or replacement of the defective part or parts.

**14. Limitation on Warranty:** The foregoing warranty are exclusive. Ferraz Shawmut disclaims all other warranties including merchantability and fitness for a particular purpose. Correction of non-conformities listed herein shall constitute Ferraz Shawmut's sole liability and Buyer's exclusive remedy for failure of Ferraz Shawmut to meet its warranty obligations, whether claims of the Buyer are based in contract, in tort (including negligence or strict liability), or otherwise.

**15. Liquidated Damages:** Contracts which include liquidated damages clauses are not acceptable to, or binding on Ferraz Shawmut unless such clauses are specifically accepted in writing by an executive officer from Ferraz Shawmut headquarters.

**16. Patents:** Ferraz Shawmut agrees that it will at its own expense defend any suit which may be brought against the Buyer based on a claim that any apparatus or part furnished under contract constitutes an infringement of any United States letters patent (provided Ferraz Shawmut is notified promptly of such suit and copies of all papers therein are delivered to Ferraz Shawmut); and Ferraz Shawmut agrees to pay all judgments and costs recovered in any such suit. In case such apparatus or any part is held to constitute infringement and the use of the apparatus or part is enjoined, Ferraz Shawmut shall at its own expense, either procure for the Buyer the right to continue using the apparatus or part, or replace with non-infringing apparatus; or modify it so it becomes non-infringing; or remove the apparatus and refund the purchase price and the transportation and installation cost thereof. The foregoing states the entire liability of Ferraz Shawmut for patent infringement by apparatus or any part thereof. Ferraz Shawmut assumes no liability whatsoever for patent infringement of any goods or part thereof designed by Buyer.

**17. Limitations of Liability:** Neither Ferraz Shawmut or its suppliers shall be liable, whether in contract, warranty, failure of a remedy to achieve its intended or essential purpose, tort (including negligence or strict liability) indemnity or any other legal theory, for loss of use, revenue or profit, or for cost of capital or of substitute use or performance, or for indirect, special, liquidated, incidental or consequential damages, or for any other loss or cost of a similar type, or for claims by Buyer for damages of Buyer's customers. Ferraz Shawmut's liability for any claim of any kind shall not exceed the purchase price of the goods or services, or portion thereof, which gives rise to the claim. Ferraz Shawmut and Buyer agree that the exclusions and limitations set forth in this article are separate and independent from any remedies the Buyer may have hereunder, or elsewhere, and shall be given full force and effect whether or not any and all such remedies shall be deemed to have failed of their essential purpose.

**18. Force Majeure:** Ferraz Shawmut shall not be liable for any delay or failure to perform its obligations under this agreement, resulting due to any fire, flood, acts of God, acts of Buyer, acts of government or other civil or military authorities, strikes or other labor disputes, accidents, epidemics, war, riot, embargoes, delays in transportation, lack of or inability to obtain raw materials, components, labor, fuel, or supplies, or other circumstances beyond Ferraz Shawmut's reasonable control. If Ferraz Shawmut elects, the time for performance shall be extended by a period reasonably necessary to overcome the effect of such delay.

**19. Governing Law:** The agreement shall in all respects be construed and governed by the internal laws of the Commonwealth of Massachusetts, without regard to conflicts of law rules.

**20. Assignment:** Buyer shall not assign this contract in total or in part, without the written consent of Ferraz Shawmut LLC





For more information,



CABLE JOINTS, CABLE TERMINATIONS, CABLE GLANDS, CABLE CLEATS  
FEEDER PILLARS, FUSE LINKS, ARC FLASH, CABLE ROLLERS, CUT-OUTS

11KV 33KV CABLE JOINTS & CABLE TERMINATIONS  
FURSE EARTHING  
[www.cablejoints.co.uk](http://www.cablejoints.co.uk)  
**Thorne and Derrick UK**  
Tel 0044 191 490 1547 Fax 0044 191 477 5371  
Tel 0044 117 977 4647 Fax 0044 117 9775582

