

ACCESSORIES INTERFACE E - 5/8"

Application

For use with connectors and bushings with an INTERFACE E - 5/8" as described in ANSI/IEEE std. 386.

Technical characteristics

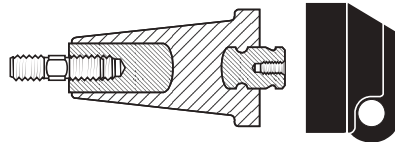
All these products, except the earthing plug, are tested for AC withstand and partial discharge prior to leaving the factory.

Up to 36 kV

6/10 (12) kV
6.35/11 (12) kV
8.7/15 (17.5) kV
12/20 (24) kV
12.7/22 (24) kV
18/30 (36) kV

750DP & 775DP Dead-end plug

Acts as a tightening nut for the 750LR and 775LR tee connector kits.
The plug contains a voltage detection point.
The threaded stud and conductive rubber protecting cap is included.

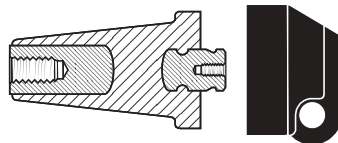


Ordering instructions

Order
750DP for 800 A or
775DP for 1250 A
applications.

750BIP & 775BIP Basic insulating plug

Acts as a tightening nut for the 750LR and 775LR tee connector kits.
The plug contains a voltage detection point.
The conductive rubber protecting cap is included.
The 750BIP and 775BIP are supplied without threaded stud.

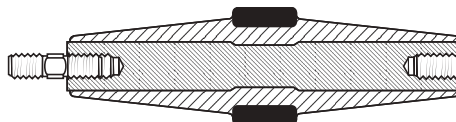


Ordering instructions

Order
750BIP for 800 A or
775BIP for 1250 A
applications.

750CP & 775CP Connecting plug

For connecting two or more connectors with a type E - 5/8" interface together, thus creating a separable cable joint or a multiple cable connection to equipment.

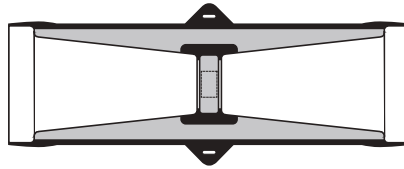


Ordering instructions

Order
750CP for 800 A or
775CP for 1250 A
applications.

750BE & 775BE Bushing extender

Provides an extension piece to allow cables to stand away from equipment.
Is used in conjunction with the connecting plug (750CP or 775CP).

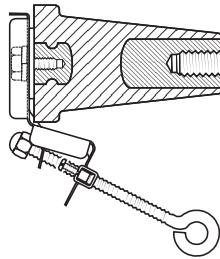


Ordering instructions

Order
750BE for 800 A or
775BE for 1250 A
applications.

750SOP Stand-off plug

Is designed to support and 'dead-end' connectors with a type E - 5/8" interface when removed from equipment.

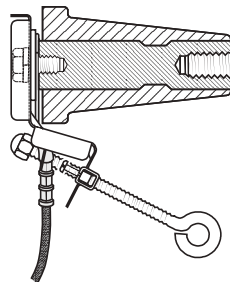


Ordering instructions

Order
750SOP for 800 A and 1250 A
applications.

750GP Earthing plug

Is designed to support and earth connectors with a type E - 5/8" interface when removed from equipment.

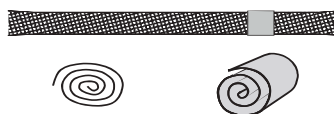


Ordering instructions

Order
750GP for 800 A and 1250 A
applications.

Kit MT Earthing kit for copper tape screened cables

Contains a tinned copper braid (25 mm² - L = 500 mm), a tinned copper wire for cleaning and water sealing mastic.



Ordering instructions

Order
Kit MT for 800 A and 1250 A
applications.