

ACCESSORIES INTERFACE A

Application

For use with connectors and bushings with an interface A as described by CENELEC EN 50180 and 50181.

Technical characteristics

All these products, except the earthing plug, are tested for AC withstand and partial discharge prior to leaving the factory.

Up to 24 kV

6/10 (12) kV
6.35/11 (12) kV
8.7/15 (17.5) kV
12/20 (24) kV
12.7/22 (24) kV

150DR Dead-end receptacle

Fits over a bushing with a type A interface to provide 'dead-end' facility.
Renders the assembly watertight.



Ordering instructions

Order
150DR for 12 kV or
K150DR for 24 kV
applications.
The dead-end receptacle can
be supplied with an earth lead.
Order: -/G. E.g. K150DR/G.

150DP Dead-end plug

Plugs into connectors or receptacles to provide 'dead-end' facility.
Renders the assembly watertight

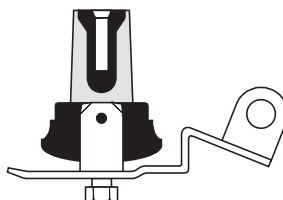


Ordering instructions

Order
150DP for 12 kV or
K150DP for 24 kV
applications.

151SOP Stand-off plug

Is designed to support and 'dead-end' connectors with a type A interface when removed from equipment.

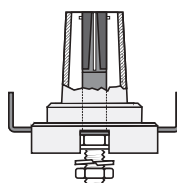


Ordering instructions

Order
151SOP for 12 kV or
K151SOP for 24 kV
applications.

250GP Earthing plug

Is designed to support and earth connectors with a type A interface when removed from equipment.



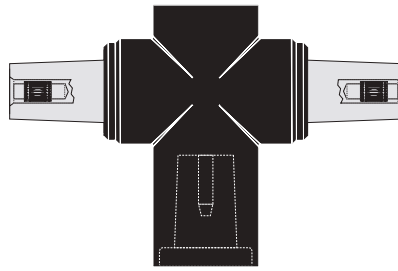
Ordering instructions

Order
250GP for 12 kV or 24 kV
applications.

200T **Separable tee connector**

Is designed to connect three cables of the same or varying sizes or two cables to equipment.

For an adapted bail, please refer to the catalogue or contact our representative.



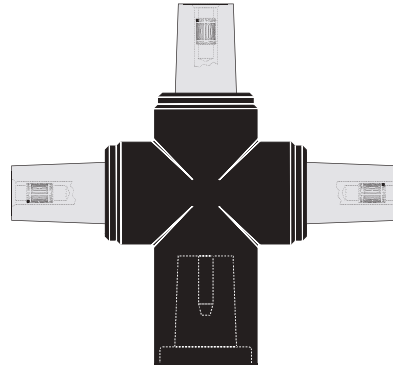
Ordering instructions

Order
200T for 12 kV or
K200T for 24 kV
applications.

200X **Separable cross connector**

Is designed to connect four cables of the same or varying sizes or three cables to equipment.

For an adapted bail, please refer to the catalogue or contact our representative.

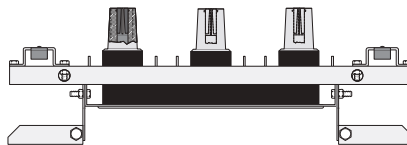


Ordering instructions

Order
200X for 12 kV or
K200X for 24 kV
applications.

1501J3-U-8 **Three-way junction**

Provides a flexible means of connecting two or three cables of the same or varying sizes. For an adapted bail, please refer to the catalogue or contact our representative.

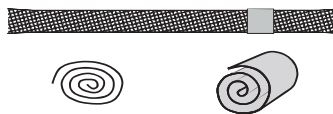


Ordering instructions

Order
1501J3-U-8 for 12 kV or
K1501J3-U-8 for 24 kV
applications.

Kit MT **Earthing kit for copper tape screened cables**

Contains a tinned copper braid (25 mm² - L=500 mm), a tinned copper wire for cleating and water sealing mastic.



Ordering instructions

Order
Kit MT for 12 kV or 24 kV
applications.