

Atlas Range Taking Cable Cleats Data Sheet

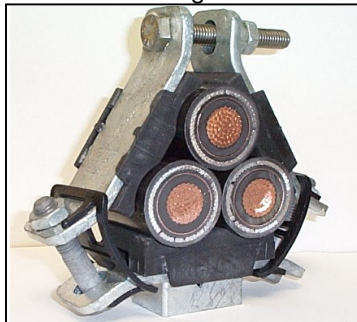
Atlas cable cleats are available for Trefoil, Single and Quadrafoil cable applications where high levels of short circuit withstand are required. As well as providing cables with significant mechanical support, the unique patented design provides a choice of one bolt, two bolt or framing channel fixing options. Manufactured in galvanised steel (this cleat also comes in stainless steel to offer ultimate protection against the harshest environmental conditions) all cleats are supplied with an M12 nut and locking nut, M12 washer and an M12 A2 stainless steel top bolt (BS3692:2001) to eliminate eddy currents. The cleat is also supplied with two M12 nuts, bolts and washers, for adjustment and two Atlas Stabilizers in Low Smoke & Fume Zero Halogen Polymeric (MDS01 Data Sheet). Single cable cleats are supplied with a Low Smoke & Fume Zero Halogen Polymeric washer (MDS01 Data Sheet).

To protect and cushion the cables during short circuit conditions, the cleat comes with integral Low Smoke & Fume Zero Halogen Polymeric pads (MDS01 Data Sheet).

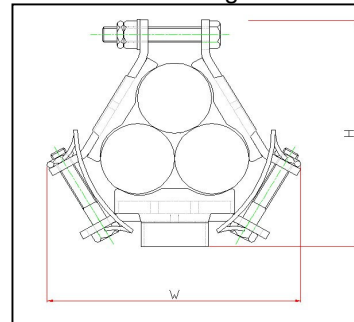
For the Intermediate Strap type AS please contact our sales office.

* Material Data Sheets MDS01 is available upon request.

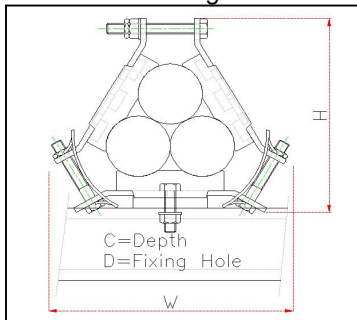
Trefoil Single Bolt



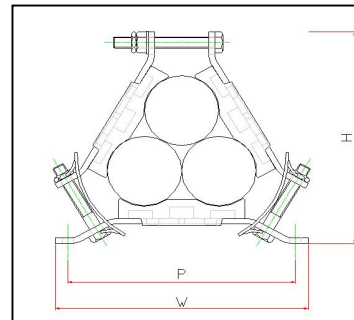
Trefoil Single Bolt



Trefoil Framing Channel



Trefoil Two Bolt



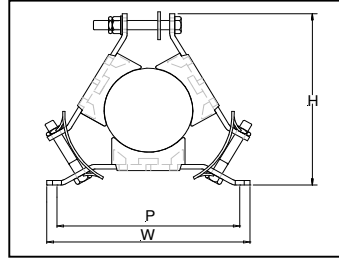
Selection table for Trefoil Cable Applications

Part No	Cable Dia. Range mm	Dimensions												Weight g	
		Two Bolt					Single Bolt				Framing Channel				
		W mm	H mm	C mm	P mm	D mm	W mm	H mm	C mm	D mm	W mm	H mm	C mm		D mm
AR2-A31-*	24-26	170	121	54	150	10.2	144	130	54	10.2	144	125	54	10.2	930
AR2-A32	26-30	170	122	54	150	10.2	144	130	54	10.2	144	125	54	10.2	930
AR2-A33	30-35	170	133	54	150	10.2	157	141	54	10.2	157	136	54	10.2	970
AR2-A34	35-40	170	134	54	150	10.2	158	142	54	10.2	158	137	54	10.2	930
AR3-A35	40-45	198	158	54	175	10.2	185	165	54	10.2	185	160	54	10.2	1200
AR3-A36	45-50	198	160	54	175	10.2	187	167	54	10.2	187	162	54	10.2	1200
AR4-A37	50-55	214	174	54	200	10.2	204	182	54	12.2	204	177	54	12.2	1300
AR4-A38	55-60	214	179	54	200	10.2	210	187	54	12.2	210	182	54	12.2	1300
AR4-A39	60-66	214	185	54	200	10.2	217	193	54	12.2	217	188	54	12.2	1300
AR5-A61	66-71	250	225	54	225	10.2	254	225	54	12.2	254	220	54	12.2	1800
AR5-A62	71-76	250	226	54	225	10.2	255	226	54	12.2	255	221	54	12.2	1800
AR5-A63	76-82	250	230	54	225	10.2	260	230	54	12.2	260	225	54	12.2	1800
AR8-A64	82-92	285	250	54	225	10.2	N/A				N/A			2100	
AR8-A65	92-102	285	250	54	225	10.2	N/A				N/A			1900	

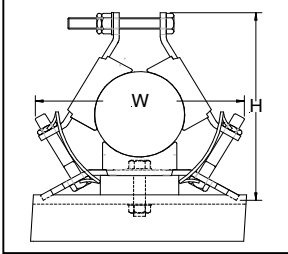
Single Cable Two Bolt



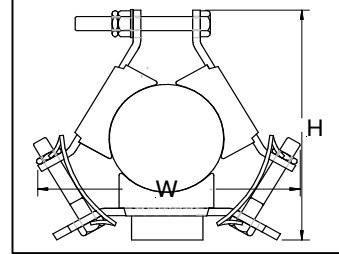
Single Cable Two Bolt



Single Cable Framing Channel



Single Cable One Bolt



Selection table for Single Cable Applications

Part No	Cable Dia. Range mm	Dimensions														Weight g
		Two Bolt					Single Bolt				Framing Channel					
		W mm	H mm	C mm	P mm	D mm	W mm	H mm	C mm	D mm	W mm	H mm	C mm	D mm		
AR2-A11-*	38-41	170	128	54	150	10.2	144	136	54	10.2	144	131	54	10.2	950	
AR2-A12-	41-74	170	129	54	150	10.2	144	136	54	10.2	144	131	54	10.2	930	
AR2-A13-	47-55	170	140	54	150	10.2	157	147	54	10.2	157	142	54	10.2	940	
AR2-A14-	55-63	170	141	54	150	10.2	158	148	54	10.2	158	143	54	10.2	930	
AR3-A15-	63-70	198	164	54	175	10.2	185	172	54	10.2	185	167	54	10.2	1200	
AR3-A16-	70-79	198	166	54	175	10.2	187	173	54	10.2	187	168	54	10.2	1200	
AR4-A17-	79-87	214	180	54	200	10.2	204	188	54	12.2	204	183	54	12.2	1300	
AR4-A18-	87-95	214	186	54	200	10.2	210	193	54	12.2	210	188	54	12.2	1300	
AR4-A19-	95-104	214	192	54	200	10.2	217	199	54	12.2	217	197	54	12.2	1300	
AR5-A51-	104-112	250	231	54	225	10.2	254	231	54	12.2	254	226	54	12.2	1700	
AR5-A52-	112-120	250	232	54	225	10.2	255	232	54	12.2	255	227	54	12.2	1700	
AR5-A53	120-130	250	237	54	225	10.2	260	237	54	12.2	260	232	54	12.2	1700	

*To order please add fixing suffix: Two Bolt-TB Single Bolt-SB Framing Cleat-FC

Testing Information

Atlas Cleats have been tested in line with the European Standard of 'Cable Cleats for Electrical Installations' BS EN 50368:2003. Typical results are detailed below:

Properties	BS EN 50368:2003 Classification Clause	Units / Classification	Atlas Trefoil Cable Application Test Data	Atlas Single Cable Application Test Data	Atlas Quadrafoil Cable Application Test Data
Cleat Type	6.1, 6.1.3	Composite	-	-	-
Impact Resistance	6.2, 6.2.5, 9.3	Very heavy Classification (6.7kg @ 300mm)	Pass	Pass	Pass
Resistance to Electro Mechanical Force	6.3	Refer to Ellis Patents for further details.	Refer to Ellis Patents for further details.	Refer to Ellis Patents for further details.	Refer to Ellis Patents for further details.
Temperature for Permanent Application	6.4	°C	-40 to 60	-40 to 60	-40 to 60
Needle Flame Test	6.5, 10.0	Application Time (seconds)	>120	>120	>120
Lateral Load Test	9.2	Newtons (N)	Refer to Ellis Patents for further details.	10670	Refer to Ellis Patents for further details.
Axial Movement Test	9.5		2000	1450	800