

TERMINAL BOXES

STB

IP66
Terminal box
Mild steel
H: 150-400
W: 150-800
D: 80-120



206

ILS

IP66
Terminal box
Stainless steel
H: 150-400
W: 150-800
D: 80-120



207



HALP

IP65
Aluminium enclosure
H: 45-230
W: 50-600
D: 30-180



KLR

IP66/NEMA 4x, 12, 13
Terminal box
Single door
H: 180
W: 240-360
D: 150

209



208



MGRP

IP65
Terminal box
Polyester
H: 75-405
W: 80-560
D: 55-120

210

DABP

IP66/67
Compact version
H: 300-1000
W: 200-800
D: 170-121

211



SABP

IP66/67
ABS terminal box
H: 75-175
W: 125-250
D: 75-150



212

OABP



IP66/67
ABS enclosure
H: 200-400
W: 200-600
D: 130

213

DPCP

IP66/67
Polycarbonate Terminal box
H: 53-230
W: 55-300
D: 36-121



215

OPCP

IP66/67
ABS enclosure
H: 200-400
W: 200-600
D: 130



216

Mild steel

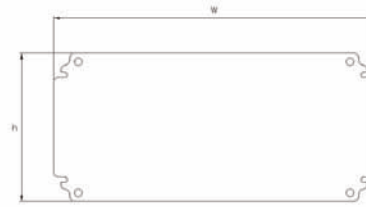
STB, Steel terminal box



Material: 1.2mm mild steel.
Body: Folded and seam welded. Four 8.5mm diameter holes for wall fixing. Supports for DIN-rails/Mounting plate.
Gasket: Sealing is ensured by an extruded one piece polyurethane gasket.
Earthing: Earthing studs M8x12mm in body and cover, M8 nuts, earth washers, and earth labels.
Protection: Complies with IP66, IK09.
Finish: RAL7035, structure powder coating.
Delivery: Base, cover, cover screws, fixing screws, cover plugs, and earthing facilities.

H	W	D	Part No.
150	150	80	STB151508
		120	STB151512
	300	80	STB153008
		120	STB153012
200	200	80	STB202008
		120	STB202012
	300	80	STB203008
		120	STB203012
	400	80	STB204008
		120	STB204012
	500	120	STB205012
	600	120	STB206012
	800	120	STB208012
300	300	80	STB303008
		120	STB303012
	400	120	STB304012
	500	120	STB305012
	600	120	STB306012
400	400	120	STB404012
	600	120	STB406012
	800	120	STB408012

BMP, Mounting plate



Description: Steel mounting plate for terminal boxes.
Material: 2mm galvanised steel.
Pack. quantity: 1 piece.

Enclosure dimension					Part No.
H	W	h	w		
150	150	125	120		BMP1515
	300	125	270		BMP1530
200	200	170	170		BMP2020
	300	170	270		BMP2030
	400	170	370		BMP2040
	500	170	470		BMP2050
	600	170	570		BMP2060
	800	170	770		BMP2080
300	300	275	270		BMP3030
	400	275	370		BMP3040
	500	275	470		BMP3050
	600	275	570		BMP3060
400	400	380	370		BMP4040
	600	380	570		BMP4060
	800	380	770		BMP4080

BDR, DIN rail

Description: DIN rail 35mm for terminal boxes.
Material: Galvanised steel.
Pack. quantity: 5 pieces.

Enclosure dimension		Profile length	Part No.
W			
150		110	BDR3515
200		160	BDR3520
300		260	BDR3530
400		360	BDR3540
500		460	BDR3550
600		560	BDR3560
800		760	BDR3580

STBH, Hinges

Description: Using this accessory the cover can be hinged. Machinin required.
Material: Zinc-plated steel.
Pack. quantity: Hinges with mounting accessories. 2 pieces.

Part No.
STBH02

AW, Wall mounting brackets

Description: Mounting brackets for safe wall fixing. It includes the sealing washers to guarantee the IP rating.
Material: 3 mm zinc plated steel.
Pack. quantity: 4 brackets with mounting accessories.

Part No.
AW41



ILS, Stainless steel terminal box



Material: 1.5 mm stainless steel AISI 304. Acid proof AISI 316 available on request.
Body: Folded and seam welded. Four 8mm diameter holes for wall fixing. Supports for DIN-rails/Mounting plate.
Gasket: Polyurethane (PUR). Temperature resistant -50°C +80°C.
Earthing: Earthing studs M6 x 15 in body and cover, M6 nuts, and earth labels.
Protection: Complies with IP67, IK09.
Finish: Outer box and cover 180-220 grit, 0.8-1.2 microns surface roughness.
Approvals: FI, GL and GOST.
Delivery: Base, cover, cover screws in stainless steel, fixing screws and cover plugs.

H	W	D	Part No.	
150	150	80	ILS151508	
		120	ILS151512	
	300	80	ILS153008	
		120	ILS153012	
	200	200	80	ILS202008
			120	ILS202012
300		80	ILS203008	
		120	ILS203012	
400		80	120	ILS204008
			120	ILS204012
	500	120	ILS205012	
		600	120	ILS206012
300	300	80	ILS303008	
		120	ILS303012	
	400	120	ILS304012	
		500	120	ILS305012
	600	120	ILS306012	
		120	ILS306012	
400	400	120	ILS404012	
	600	120	ILS406012	
	800	120	ILS408012	

IMP, Mounting plate

Description: Steel mounting plate for IL/ILS boxes.
Material: 2mm galvanised steel.
Pack. quantity: 1 piece.

For enclosure		Part No.	
H	W		
150	150	IMP1515	
	290	IMP1530	
	200	190	IMP2020
		290	IMP2030
		390	IMP2040
	300	490	IMP2050
590		IMP2060	
790		IMP2080	
400		290	IMP3030
		390	IMP3040
		490	IMP3050
400	590	IMP3060	
	390	IMP4040	
	590	IMP4060	
	790	IMP4080	

IDR, DIN rail

Description: DIN rail 35mm for IL boxes.
Material: Galvanised steel.
Pack. quantity: 1 piece.

For enclosure		Part No.
W		
800		IDR3580
600		IDR3560
500		IDR3550
400		IDR3540
300		IDR3530
200		IDR3520
150		IDR3515

ILH, Hinges

Description: Using this accessory the cover can be hinged. Machining is required.
Material: Stainless steel
Pack. quantity: Set of 2 hinges with mounting accessories.

Part No.
ILH02

ILSB, Stainless Steel Wall mounting brackets

Description: Mounting kit for wall fixing. It includes the sealing washers to maintain the IP rating.
Material: Stainless steel AISI 304.
Pack. quantity: 4 brackets with mounting accessories.

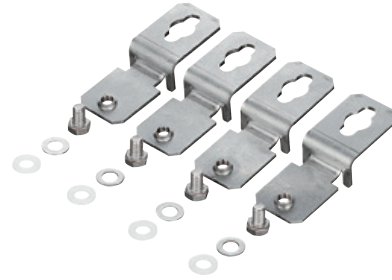
For enclosure		Part No.
D		
50		ILSB1
20		ILSB2

Stainless steel

KLR, Terminal box, stainless steel



AWS, Wall mounting brackets



Pack. quantity: 4 pieces

Additional information: 12mm space between enclosure & wall

Material	Part No.
Chrome plated 4mm	AWS41
Stainless steel 316 3mm	AWS41-316

Description: The Eldon KLR, IP66 Terminal enclosure in a pre-grained Stainless Steel finish providing a highly smooth surface, suitable for extreme harsh and demanding environments. The KLR enclosure provides the ideal finish for applications where hygiene requirements are strict such as the food Industry, pharmaceutical plants and laboratories. Also offering high resistance in corrosive environments.

Material: 304 S15 (316 on request), 240s pre-grained 1.0 mm stainless steel.

Body: Folded and seam welded. All welds are re treated.

Top plate: Attached to the body by 4 fixing screws. It is sealed with an extruded one piece polyurethane gasket.

Terminal rails: The KLR terminal boxes are delivered with both an asymmetric G- profile (fitted) and a top-hat profile (loose). Thus any type of modern rail mounted terminal can be used.

Surface characteristics: 240s pre grained (average 0.5 micron), (Other grades available upon request).

Delivery: Enclosure with a G-profile fitted. Alternative top hat rail and full fitting kits.

Protection: Corresponds with IP 66 and NEMA 4X, 12 and 13.

H	W	D	Weight	Profile length	Part No.
180	240	150	2.5	190	KLR2
	360	150	3.6	310	KLR3

To order a stainless steel enclosure in high grade 316, please add 316 to the catalogue no, e.g. KLR 2-316.
For wall brackets order FR15.



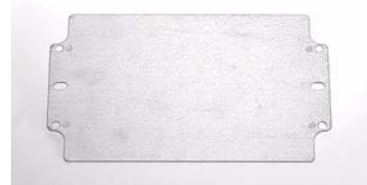
HALP, Aluminium box



Material: Aluminium type ALSi 12.
Gasket: Standard supply fitted with neoprene gasket. Silicone gaskets are available on request.
Temperature resistance: -40°C to +80°C with the standard neoprene gasket. -50°C to +130°C with an optional silicone gasket.
Protection: Complies with IP65.
Finish: RAL 7001
Approvals: UL, GL. ATEX boxes (totally finished with components) can be supplied on request.
Delivery: Box base, cover and cover screws made of stainless steel.

H	W	D	Weight	Part No.
45	50	30	0.07	HALP050503GE
64	58	36	0.17	HALP060604GE
	98	36	0.22	HALP061004GE
	150	36	0.33	HALP061504GE
80	75	57	0.29	HALP080806GE
	125	57	0.44	HALP081306GE
	175	57	0.54	HALP081806GE
	250	57	0.71	HALP082506GE
122	122	80	0.86	HALP121208GE
		90	0.94	HALP121209GE
		220	1.29	HALP122208GE
		90	1.32	HALP122209GE
		360	1.41	HALP123608GE
160	160	90	1.96	HALP161609GE
		260	2.55	HALP162609GE
		360	4.31	HALP163609GE
		560	2.75	HALP165609GE
230	200	110	4.27	HALP232011GE
		330	5.75	HALP233311GE
			4.81	HALP233318GE
		400	6.89	HALP234011GE
		600	6.88	HALP236011GE

HMP, HALP Mounting plate



Description: Steel mounting plate for HALP boxes.
Material: 1.5mm galvanised steel, 2.5mm HMP1656E and HMP2360E.
Pack. quantity: 1 piece.

For enclosure				Part No.
H	W	h	w	
64	58	54	48	HMP0606E
	98	54	88	HMP0610E
	150	54	140	HMP0615E
80	75	69	64	HMP0808E
	125	69	114	HMP0813E
	175	69	164	HMP0818E
	250	69	239	HMP0825E
122	122	108	107	HMP1212E
	220	108	204	HMP1222E
	360	108	343	HMP1236E
160	160	145	143	HMP1616E
	260	145	243	HMP1626E
	360	145	343	HMP1636E
	560	145	543	HMP1656E
230	200	214	183	HMP2320E
	330	214	313	HMP2333E
	400	214	383	HMP2340E
	600	214	583	HMP2360E

HHI, Hinges



Description: Using this accessory the cover can be hinged. 150° opening. Machining is required.
Material: Aluminium.
Pack. quantity: Set of 2 hinges in HHI2, and 3 hinges in HHI3. Mounting accessories are included.

Part No.
HHI02
HHI03

Internal hinges available on request.

Polyester

MGRP, Polyester box



Material: Glass-fibre reinforced polyester.
Gasket: Standard supply fitted with neoprene gasket. Silicone gaskets are available on request.
Temperature resistance: -40°C to +80°C with the standard neoprene gasket. -50°C to +130°C with an optional silicone gasket.
Protection: Complies with IP65.
Finish: RAL 7001
Approvals: UL, GL. ATEX boxes (totally finished with components) can be supplied on request.
Delivery: Box base, cover and cover screws made of stainless steel.

GMP, MGRP Mounting plate



Description: Mounting plate for MGRP boxes.
Material: 1.5mm laminated paper, 1.5 mm galvanised steel GMP1212E and above, and 2.5mm GMP1656E.
Pack. quantity: 1 piece.

For enclosure				
H	W	h	w	Part No.
75	80	64	69	GMP0808E
	110	64	99	GMP0811E
	160	64	149	GMP0816E
120	190	64	179	GMP0819E
	220	107	108	GMP1212E
	220	107	206	GMP1222E
160	160	144	143	GMP1616E
	260	144	244	GMP1626E
	360	144	344	GMP1636E
250	560	144	544	GMP1656E
	255	233	240	GMP2526E
	400	233	383	GMP2540E
405	400	390	385	GMP4140E

HHI, Hinges



Description: Using this accessory the cover can be hinged. 150° opening. Machining is required.
Material: Aluminium.
Pack. quantity: Set of 2 hinges in HHI2, and 3 hinges in HHI3. Mounting accessories are included.

Part No.
HHI02
HHI03

Internal hinges available on request.

H	W	D	Weight	Part No.
75	80	55	0.23	MGRP080806GE
		75	0.31	MGRP080808GE
110	55	0.30		MGRP081106GE
		75	0.38	MGRP081108GE
160	55	0.41		MGRP081606GE
		75	0.43	MGRP081608GE
190	55	0.45		MGRP081906GE
		75	0.53	MGRP081908GE
120	122	90	0.75	MGRP121209GE
	220	90	1.06	MGRP122209GE
160	160	90	1.13	MGRP161609GE
	260	90	1.17	MGRP162609GE
	360	90	2.15	MGRP163609GE
250	560	90	3.20	MGRP165609GE
	255	120	2.66	MGRP252612GE
	400	120	3.65	MGRP254012GE
405	400	120	5.58	MGRP414012GE



DABP, OEM ABS box



Description: ABS box, suitable for indoor use. Low UV radiation resistance.

Material: ABS.

Gasket: Polyurethane gasket integrated in the box cover.

Temperature resistance: -40°C to +60°C.

Flammability: UL94 HB

Protection: Complies with IP66/67, IK07 (+35°C), IK06 (-25°C).

Finish: RAL 7035

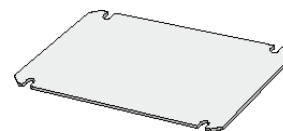
Approvals: GL, FI and GOST.

Delivery: Box body, plain cover, cover screws made of stainless steel, mounting screws and cover plugs made of polyamide.

On request: Box with transparent cover: the transparent cover is made of polycarbonate, the item number is DABPxxxxxTE.

H	W	D	Weight	Part No.
53	55	36	0.04	DABP050504GE
		63	0.05	DABP050704GE
80	82	56	0.12	DABP080806GE
		86	0.14	DABP080809GE
		120	0.15	DABP081206GE
		86	0.19	DABP081209GE
160	122	56	0.19	DABP081606GE
		86	0.23	DABP081609GE
		56	0.20	DABP121206GE
120	122	86	0.26	DABP121209GE
		160	0.34	DABP121609GE
		200	0.38	DABP122009GE
150	200	76	0.39	DABP152008GE
160	240	91	0.55	DABP162409GE
		121	0.68	DABP162412GE
		230	0.85	DABP233009GE
		111	0.90	DABP233011GE

DMP, Mounting plate



Description: Steel mounting plate for DABP/DPCP boxes.

Material: 1.5 mm galvanised steel.

Pack. quantity: 1 piece.

For enclosure				Part No.
H	W	h	w	
80	82	55	68	DMP0808E
		65	93	DMP0812E
		65	133	DMP0816E
120	122	105	95	DMP1212E
		105	132	DMP1216E
		105	172	DMP1220E
150	200	133	172	DMP1520E
160	240	145	213	DMP1624E
230	300	210	285	DMP2330E

DR, DIN rail



Description: DIN rail 35 mm for DABP/DPCP boxes.

Material: Steel.

Pack. quantity: 1 piece.

For enclosure		Part No.
W		
82		DR350584E
120/122		DR350964E
160		DR351364E
200 *		DR351604E
200 **		DR351764E
240		DR352154E
300		DR352754E

* DABP152008, ** DABP122009

DSHI, Hinges

Description: Using this accessory the cover can be hinged. Machining is required.

Material: Polycarbonate.

Finish: RAL 7035.

Pack. quantity: Set of 2 hinges with mounting accessories.

Part No.
DSHI1E

DFL, Wall mounting brackets

Description: Mounting brackets for wall fixing.

Material: Polycarbonate.

Surface characteristics: RAL 7035.

Pack. quantity: 4 brackets with mounting accessories.

Part No.
DFL1E



ABS

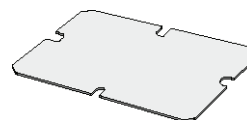
SABP, Small ABS box



Description: ABS box, suitable for indoor use. Low UV radiation resistance.
Material: ABS.
Gasket: Polyurethane gasket integrated in the box cover.
Temperature resistance: - 40°C to + 60°C.
Flammability: UL94 HB
Protection: Corresponds with IP66/67, IK07 (+35°C), IK06 (-25°C).
Finish: RAL 7035
Approvals: GL, FI and GOST.
Delivery: Box base, cover, cover screws of polyamide and mounting screws.
On request: Box with transparent cover: the transparent cover is made of polycarbonate, the item number is SABPxxxxxTE. Box made of polycarbonate: With grey or transparent cover, the item number is SPCPxxxxxGE/SPCPxxxxxTE.

H	W	D	Weight (g)	Part No.
75	125	75	184	SABP081308GE
		100	243	SABP081310GE
		125	266	SABP081313GE
125	125	75	250	SABP131308GE
		100	317	SABP131310GE
		125	353	SABP131313GE
175	125	75	328	SABP131808GE
		100	401	SABP131810GE
		125	459	SABP131813GE
175	175	150	521	SABP131815GE
		75	392	SABP181808GE
		100	490	SABP181810GE
250	175	125	557	SABP181813GE
		150	616	SABP181815GE
		75	553	SABP182508GE
250	250	100	666	SABP182510GE
		150	842	SABP182515GE

SMP, Mounting plate



Description: Steel mounting plate for SABP boxes.
Material: 1.5 mm galvanised steel.
Pack. quantity: 1 piece.

For enclosure				Part No.
H	W	h	w	
75	125	48	98	SMP0813E
125	125	98	98	SMP1313E
	175	98	148	SMP1318E
175	175	148	148	SMP1818E
	250	148	223	SMP1825E

DR2, DIN rail



Description: DIN rail 35 mm for SABP boxes.
Material: Steel.
Pack. quantity: 1 piece.

For enclosure		Part No.
W		
		DR350404E
		DR350904E
		DR351404E
240		DR352154E

SCP, Cover plugs

Description: Only used in hinged boxes, the standard cover screws are replaced by cover plugs.
Material: Polyethylene.
Pack. quantity: 10 pieces.

For enclosure		Part No.
D		
75		SCP08E
100		SCP10E
125, 150		SCP1315E

DSHI, Hinges

Description: Using this accessory the cover can be hinged. Machining is required.
Material: Polycarbonate.
Finish: RAL 7035.
Pack. quantity: Set of 2 hinges with mounting accessories.

Part No.
DSHI1E

SFL, Wall mounting brackets

Description: Mounting brackets for wall fixing.
Material: Polycarbonate.
Finish: RAL 7035.
Pack. quantity: 4 brackets with mounting accessories.

Part No.
SFL1E



OABP, Large ABS box



Description: ABS box, suitable for indoor use. Low UV radiation resistance.

Material: ABS

Gasket: Polyurethane gasket integrated in the box cover.

Temperature resistance: -40°C to +60°C.

Flammability: UL94 HB

Protection: Complies with IP66/67, IK07 (+35°C), IK06 (-25°C).

Finish: RAL 7035

Delivery: Box base, cover, cover screws of polyamide and mounting screws.

* A cover can be mounted onto the back of the enclosure, additional components needed are the cover, cover screws and threaded bushings.

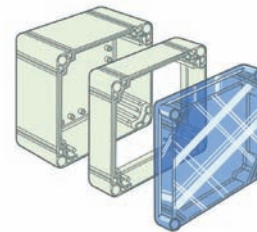
With grey cover

H	W	D	Weight (g)	Part No.
200	200	132	894	OABP202013GE
	300	132	1176	OABP203013GE
	400	132	1467	OABP204013GE
300	300	132	1510	OABP303013GE
	400	132	1950	OABP304013GE
	600	132	2696	OABP306013GE
400	600	132	3484	OABP406013GE

With transparent cover

H	W	D	Weight (g)	Part No.
200	200	132	926	OABP202013TE
	300	132	1218	OABP203013TE
	400	132	1512	OABP204013TE
300	300	132	1568	OABP303013TE
	400	132	2003	OABP304013TE
	600	132	2765	OABP306013TE
400	600	132	3567	OABP406013TE

OPCP-EE, Polycarbonate frame extension



Description: Depth extension frame, to be used when you need more depth than the standard. Can be used in combination with the OPCP range.

Material: Polycarbonate

Pack. quantity: 1 piece

For enclosure				Part No.
H	W	D		
200	200	55		OPCP202006E
	300	55		OPCP203006E
	400	55		OPCP204006E
300	300	55		OPCP303006E
	400	55		OPCP304006E
	600	55		OPCP306006E
400	600	55		OPCP406006E

OMP, Mounting plate



Description: Steel mounting plate for OABP/OPCP boxes.

Material: 1.5 mm galvanised steel.

Pack. quantity: 1 piece.

For enclosure					Part No.
H	W	h	w		
200	200	160	160		OMP2020E
	300	160	260		OMP2030E
	400	160	360		OMP2040E
300	300	260	160		OMP3030E
	400	260	260		OMP3040E
	600	260	560		OMP3060E
400	600	360	560		OMP4060E

DR3, DIN rail



Description: DIN rail 35 mm for OABP/OPCP boxes.

Material: Steel.

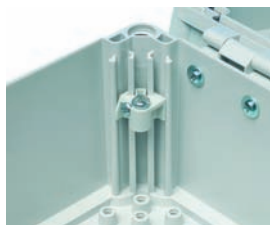
Pack. quantity: 1 piece.

For enclosure		Part No.
W		
200		DR351505E
300		DR352505E
400		DR353505E



ABS

OEL, Mounting plate depth adjustment kit



Description: It allows mounting of mounting plate at any depth. Include M5 bolts.

Pack. quantity: OEL1E: 1 piece, and OELA14E: 4 pieces.

Part No.
OEL1E
OELA1.04E

OLW, Wing screw



Description: For enclosures equipped with hinges, used opposite hinges for easier access.

Pack. quantity: 1 piece

Part No.
OLW55E

OCP, Cover plugs



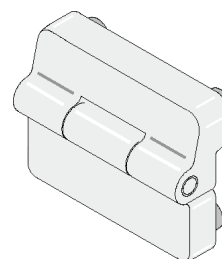
Description: Only used in hinged boxes, the standard cover screws are replaced by cover plugs.

Material: Polyethylene.

Pack. quantity: 12 pieces.

Part No.
OCP1E

OHI, Hinges



Description: Using this accessory the cover can be hinged. Machining is required.

Material: Polycarbonate.

Finish: RAL 7035.

Pack. quantity: Set of 2 hinges with mounting accessories.

Part No.
OHI1E

OTS, Threaded bushing for cover screw



Description: Required for fixing a cover on the rear of the box, in conjunction with screws OLW.

Pack. quantity: 1 piece

Part No.
OTS1E

OFL, Wall mounting brackets



Description: Mounting brackets for wall fixing. Can be mounted in three different directions, and will support approximately a weight of 60 Kgs.

Material: Polyamide.

Finish: RAL 7035.

Pack. quantity: 4 brackets with mounting accessories.

Part No.
OFL1E





DPCP, OEM Polycarbonate box



Doors and panels: Polycarbonate box, suitable for outdoor use. High UV radiation resistance. Self-extinguishing.

Material: Polycarbonate.

Gasket: Polyurethane gasket integrated in the box cover.

Temperature resistance: -50°C to +100°C.

Flammability: UL94 V-2

Protection: Complies with IP 66/67, NEMA 4, 4X, 6, 12, 13, IK08.

Finish: RAL 7035

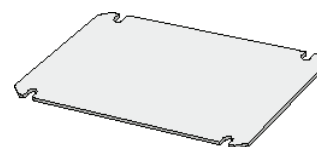
Approvals: GL, FI, GOST. For UL and cUL please contact our sales department.

Delivery: Box body, plain cover, cover screws made of stainless steel, mounting screws and cover plugs made of polyamide.

On request: Box with transparent cover: the transparent cover is made of polycarbonate, the item number is DPCPxxxxxTE.

H	W	D	Weight	Part No.
53	55	36	0.05	DPCP050504GE
	63	36	0.06	DPCP050704GE
80	82	56	0.13	DPCP080806GE
		86	0.16	DPCP080809GE
	120	56	0.17	DPCP081206GE
		86	0.21	DPCP081209GE
	160	56	0.19	DPCP081606GE
		86	0.26	DPCP081609GE
120	122	56	0.22	DPCP121206GE
		86	0.29	DPCP121209GE
	160	91	0.36	DPCP121609GE
	200	86	0.42	DPCP122009GE
150	200	76	0.42	DPCP152008GE
160	240	91	0.61	DPCP162409GE
		121	0.74	DPCP162412GE
230	300	86	0.97	DPCP233009GE
		111	1.11	DPCP233011GE

DMP, Mounting plate



Description: Steel mounting plate for DABP/DPCP boxes.

Material: 1.5 mm galvanised steel.

Pack. quantity: 1 piece.

For enclosure				Part No.
H	W	h	w	
80	82	55	68	DMP0808E
	120	65	93	DMP0812E
	160	65	133	DMP0816E
120	122	105	95	DMP1212E
	160	105	132	DMP1216E
	200	105	172	DMP1220E
150	200	133	172	DMP1520E
160	240	145	213	DMP1624E
230	300	210	285	DMP2330E

DR, DIN rail



Description: DIN rail 35 mm for DABP/DPCP boxes.

Material: Steel.

Pack. quantity: 1 piece.

For enclosure		Part No.
W		
82		DR350584E
120/122		DR350964E
160		DR351364E
200 *		DR351604E
200 **		DR351764E
240		DR352154E
300		DR352754E

* DABP152008, ** DABP122009

DSHI, Hinges

Description: Using this accessory the cover can be hinged. Machining is required.

Material: Polycarbonate.

Finish: RAL 7035.

Pack. quantity: Set of 2 hinges with mounting accessories.

Part No.
DSHI1E

DFL, Wall mounting brackets

Description: Mounting brackets for wall fixing.

Material: Polycarbonate.

Surface characteristics: RAL 7035.

Pack. quantity: 4 brackets with mounting accessories.

Part No.
DFL1E

Polycarbonate

OPCP, Large Polycarbonate box



Description: PC box, suitable for outdoor use. High UV radiation resistance.

Material: Polycarbonate.

Gasket: Polyurethane gasket integrated in the box cover.

Temperature resistance: -50°C to +100°C.

Flammability: UL94 V-2

Protection: Complies with IP66/67, NEMA 4, 4X, 12, 13, IK08.

Finish: RAL 7035

Approvals: GL, FI, GOST. For UL and cUL please contact our sales department.

Delivery: Box body, cover, cover screws made of polyamide and mounting screws.

* A cover can be mounted onto the back of the enclosure, additional components needed are the cover, cover screws and threaded bushings.

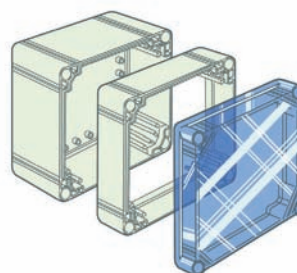
With grey cover

H	W	D	Weight (g)	Part No.
200	200	130	1039	OPCP202013GE
	300	130	1349	OPCP203013GE
	400	130	1674	OPCP204013GE
300	300	130	1738	OPCP303013GE
	400	130	2199	OPCP304013GE
400	600	130	3964	OPCP406013GE
	300	600	3000	OPCP306013GE

With transparent cover

H	W	D	Weight (g)	Part No.
200	200	130	1039	OPCP202013TE
	300	130	1349	OPCP203013TE
	400	130	1674	OPCP204013TE
300	300	130	1738	OPCP303013TE
	400	130	2199	OPCP304013TE
400	600	130	3000	OPCP306013TE
	600	130	3964	OPCP406013TE

OPCP-EE, Polycarbonate frame extension



Description: Depth extension frame, to be used when you need more depth than the standard. Can be used in combination with the OPCP range.

Material: Polycarbonate

Pack. quantity: 1 piece

For enclosure			Part No.
H	W	D	
200	200	55	OPCP202006E
	300	55	OPCP203006E
	400	55	OPCP204006E
300	300	55	OPCP303006E
	400	55	OPCP304006E
	600	55	OPCP306006E
400	600	55	OPCP406006E

OMP, Mounting plate



Description: Steel mounting plate for OABP/OPCP boxes.

Material: 1.5 mm galvanised steel.

Pack. quantity: 1 piece.

For enclosure					Part No.
H	W	h	w		
200	200	160	160		OMP2020E
	300	160	260		OMP2030E
	400	160	360		OMP2040E
300	300	260	160		OMP3030E
	400	260	260		OMP3040E
	600	260	560		OMP3060E
400	600	360	560		OMP4060E

**DR3, DIN rail**

Description: DIN rail 35 mm for OABP/OPCP boxes.

Material: Steel.

Pack. quantity: 1 piece.

For enclosure		Part No.
W		
200		DR351505E
300		DR352505E
400		DR353505E

OEL, Mounting plate depth adjustment kit

Description: It allows mounting of mounting plate at any depth. Include M5 bolts.

Pack. quantity: OEL1E: 1 piece, and OELA14E: 4 pieces.

Part No.
OEL1E
OELA1.04E

OCP, Cover plugs

Description: Only used in hinged boxes, the standard cover screws are replaced by cover plugs.

Material: Polyethylene.

Pack. quantity: 12 pieces.

Part No.
OCP1E

OTS, Threaded bushing for cover screw

Description: Required for fixing a cover on the rear of the box, in conjunction with screws OLV.

Pack. quantity: 1 piece

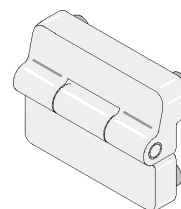
Part No.
OTS1E

OLW, Wing screw

Description: For enclosures equipped with hinges, used opposite hinges for easier access.

Pack. quantity: 1 piece

Part No.
OLW55E

OHI, Hinges

Description: Using this accessory the cover can be hinged. Machining is required.

Material: Polycarbonate.

Finish: RAL 7035.

Pack. quantity: Set of 2 hinges with mounting accessories.

Part No.
OHI1E

OFL, Wall mounting brackets

Description: Mounting brackets for wall fixing. Can be mounted in three different directions, and will support approximately a weight of 60 Kgs.

Material: Polyamide.

Finish: RAL 7035.

Pack. quantity: 4 brackets with mounting accessories.

Part No.
OFL1E