

# Stainless Steel and Painted Enclosures

**COOPER** Crouse-Hinds



OFFSHORE



MARINE



PETROCHEMICAL

## HAZARDOUS AREA & INDUSTRIAL ENCLOSURE SOLUTIONS

[www.enclosures-crouse-hinds.uk.com](http://www.enclosures-crouse-hinds.uk.com)



POWER GENERATION



WWW.CABLEJOINTS.CO.UK  
**THORNE & DERRICK UK**  
TEL 0044 191 490 1547 FAX 0044 477 5371  
TEL 0044 117 977 4647 FAX 0044 977 5582  
WWW.THORNEANDDERRICK.CO.UK

# ENCLOSURE SOLUTIONS

 **COOPER** Crouse-Hinds

## TABLE OF CONTENTS

**Company Profile**

**Quality Certificate**

**Product Range:**

**Ex-Cell – Steel Product Range**

**NEXT – Steel Product Range**

**STB – Steel Product Range**

**HVB – Steel Product Range**

**QBX - Steel Product Range**

**Kestrel Product Range**

**Enclosure Product Range Size Chart**

**Customized Enclosure Services**



**WWW.CABLEJOINTS.CO.UK**  
**THORNE & DERRICK UK**  
TEL 0044 191 490 1547 FAX 0044 477 5371  
TEL 0044 117 977 4647 FAX 0044 977 5582  
**WWW.THORNEANDDERRICK.CO.UK**

REV 0907

# ENCLOSURE SOLUTIONS

**COOPER** Crouse-Hinds

## COMPANY PROFILE



Cooper Crouse- Hinds (UK) Ltd. is a DIN EN ISO 9001: 2000 registered company manufacturing a range of high quality and robust junction boxes, enclosures and custom electrical assemblies. These have been designed and engineered to meet the requirements of the most demanding hazardous area, marine and heavy industrial environmental applications.

With over 30 years of experience in the design, engineering and manufacture of enclosures and custom electrical assemblies, Cooper Crouse-Hinds provides proven, tried and tested solutions using quality materials and processes to provide products to endure the harshest environmental conditions for project and installation requirements.

Our core manufacturing expertise is in the manufacture of metallic fabricated enclosures in both steel and various grades of stainless steel. These enclosures are available in options of different material finishes including electro-polished, powder coated or natural finish, depending on the material and application.

As a result of this our enclosures have the inherent benefits of a high degree of environmental ingress protection.

The Cooper Crouse-Hinds enclosure product line is renowned worldwide for quality, performance, longevity, and value. This is reflected by an impressive portfolio of global customers which include the major oil and pharmaceutical companies world-wide.

In addition to our standard range enclosure products we also manufacture many customised solutions for OEM customers that require an enclosure to meet a defined specification. These maybe variations on a standard product range to accommodate a customer's products or assemblies; alternatively it could be a completely custom design for a specific application.

At Cooper Crouse-Hinds we also undertake sub-contract works using our highly skilled and motivated work force in our modern production facility that has a comprehensive plant portfolio to provide a number or combination of services



**WWW.CABLEJOINTS.CO.UK**  
**THORNE & DERRICK UK**  
TEL 0044 191 490 1547 FAX 0044 477 5371  
TEL 0044 117 977 4647 FAX 0044 977 5582  
**WWW.THORNEANDDERRICK.CO.UK**

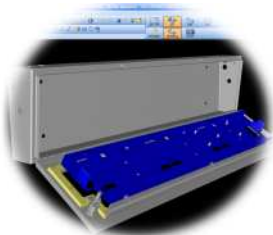
REV 0907

# ENCLOSURE SOLUTIONS

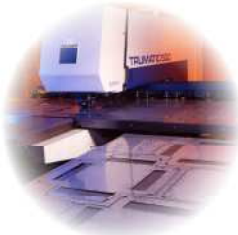
**COOPER** Crouse-Hinds

## COMPANY PROFILE

- **Design and Engineering**
  - Radan 3D modelling
  - CAD Drawing
  - Documentation
- **Fabrication and Welding**
  - CNC Punching and Forming
  - CNC TIG and MIG processes
  - Skilled workforce
- **Finishing**
  - Polyester Powder Coating
  - Stainless Steel Electro-polishing
- **Electrical Sub-Assembly**
  - Custom Assembly
  - Labelling
  - Engraving
  - Machining



• Design



• Punching



• Folding



• Welding



• Painting



• Electro Polishing



WWW.CABLEJOINTS.CO.UK  
**THORNE & DERRICK UK**  
TEL 0044 191 490 1547 FAX 0044 477 5371  
TEL 0044 117 977 4647 FAX 0044 977 5582  
WWW.THORNEANDDERRICK.CO.UK

REV 0907

# ENCLOSURE SOLUTIONS

**COOPER** Crouse-Hinds



## C E R T I F I C A T E

**DQS GmbH**  
Deutsche Gesellschaft zur Zertifizierung von Managementsystemen  
hereby certifies that the company



**COOPER Crouse-Hinds GmbH**

Neuer Weg Nord 49  
D-69412 Eberbach

with the organizational units/sites as listed in the annex

for the scope

Development, production and sales of explosion protected products and systems standard and custom build enclosures for both nonhazardous and hazardous area applications

has implemented and maintains a

### Quality Management System.

An audit, documented in a report, has verified that this quality management system fulfills the requirements of the following standard:

**DIN EN ISO 9001 : 2000**  
December 2000 edition

This certificate is valid until 2011-07-14

Certificate Registration No. 081078 QM

Frankfurt am Main 2008-07-15



*M. Drechsel*  
Ass. iur. M. Drechsel

MANAGING DIRECTORS

D-60433 Frankfurt am Main, August-Schanz-Straße 21

*S. Heinloth*  
Dipl.-Ing. S. Heinloth



Annex to Certificate Registration No.: 081078 QM

**COOPER Crouse-Hinds GmbH**

Neuer Weg Nord 49  
D-69412 Eberbach

#### Organizational unit/site

**Cooper Crouse-Hinds B.V.**  
Vertriebsstandort  
Sydneystraat 74  
NL-3047 BP Rotterdam

#### Scope

Sales of explosion protected products and systems standard and custom build enclosures for both nonhazardous and hazardous area applications

**Cooper Crouse-Hinds**  
Vertriebsstandort  
Unit G, Quinn Close  
Seven Stars Industrial Estate  
Whitley  
GB-Coventry CV3 4LH

Sales of explosion protected products and systems standard and custom build enclosures for both nonhazardous and hazardous area applications

**Cooper Crouse-Hinds AS**  
Vertriebsstandort  
Husebysletta  
N 3412 Lierstrand

Sales of explosion protected products and systems standard and custom build enclosures for both nonhazardous and hazardous area applications

**Cooper Crouse-Hinds (UK) Ltd.**  
Enclosures Division  
GB-Sheerness, Kent ME12 1 LP

Development, production and sales of explosion protected products and systems standard and custom build enclosures for both nonhazardous and hazardous area applications

**Cooper Crouse-Hinds S.A**  
Avda. Santa Eulalia, 290  
E-08223 Terrassa (Barcelona)

Development, production and sales of explosion protected products and systems standard and custom build enclosures for both nonhazardous and hazardous area applications

This annex (edition: 2008-07-15) is only valid in connection with the above-mentioned certificate.



**WWW.CABLEJOINTS.CO.UK**  
**THORNE & DERRICK UK**  
**TEL 0044 191 490 1547 FAX 0044 477 5371**  
**TEL 0044 117 977 4647 FAX 0044 977 5582**  
**WWW.THORNEANDDERRICK.CO.UK**

REV 0907



# Ex-Cell STEEL ENCLOSURES

**COOPER** Crouse-Hinds

## HIGH INTEGRITY ENCLOSURE / TERMINATION SOLUTIONS

The **Ex-Cell** range is an **ATEX** and **IECEX** certified steel and stainless steel junction box solution fully compliant with the impact, UV, thermal and ingress protection requirements for hazardous locations.

Available in a wide range of sizes to meet a diverse range of applications. Ideal for electrical and instrumentation applications.

Using the highest quality materials, design benefits and precision manufacturing the **Ex-Cell** range is the benchmark for quality and performance in steel enclosures.

The Stainless Steel versions are suitable for salt laden atmospheres and harsh environmental conditions.



- FIP gasket
- Excellent recovery properties



- Integral drainage channel



- internal / external earth stud



- Heavy-duty welded mounting lugs



Ex-Cell with 1/4 turn double bit latch & horizontal mounting lugs

Ex-Cell with retained lid bolts & horizontal mounting lugs



Other options available

- **Material:**
- **Material Thickness:**
- **Finish:**
- **Gasket Material:**

Stainless Steel grades 316L (1.4401) & 304 (1.4301) or Sheet Steel.  
 Body – 1.2mm, Door - 1.2mm (up to 400 x 300), 1.5mm for larger sizes.  
 Stainless Steel: Electro-chemical polish. Sheet Steel: Powder polyester Grey RAL 7032.  
 Door – foam in place polyurethane (FIP), Gland Plate – Chloroprene closed cell sponge.

**Option:** Silicon closed cell sponge available for door and gland plate sealing.

- **Door Fastening:**

Hinged door with chrome plated die cast zinc 1/4 turn latches.

**Option:** Captive stainless steel slotted hex head screws.

- **Enclosure Mounting:**
- **Equipment Mountings:**
- **Enclosure Earth:**

4 x external 3mm thick welded lugs, 11mm Ø holes / slots.

4 x stand off pillars Ø 9mm, 25mm high, tapped M6 x10.

M10 external / internal brass earth stud assembly.

- **Ingress Protection Rating:**
- **Temperature Range:**
- **Impact Resistance:**
- **Certification:**

IP66

-20°C to +40°C (FIP gasket material) **Option:** -55°C to +55°C (Silicon)

7 J (Nm)

**Component certified** II 2 GD Ex e II - ATEX (PTB02ATEX1021U) & IECEX (IECEX BKI 08.0001U)

Industrial Control Panel UL cULus to UL50 / c22.2 no. 94-m91, types 3S, 4, 4X GOST-R

NOTE: empty enclosure is component certified – for custom assembly service and apparatus certification please contact your local sales representative



**WWW.CABLEJOINTS.CO.UK**  
**THORNE & DERRICK UK**  
 TEL 0044 191 490 1547 FAX 0044 477 5371  
 TEL 0044 117 977 4647 FAX 0044 977 5582  
**WWW.THORNEANDDERRICK.CO.UK**

**TECHNICAL DATA SHEET**

**Ex-Cell Range Enclosure**

**METRIC (150 deep)**

CCH REFERENCE		XLH 231513	XLH 262615	XLH 302015	XLH 303015	XLH 403015	XLH 404015	
<b>DIMENSIONS OVERALL (HEIGHT x WIDTH x DEPTH mm)</b> (Imperial Conversion)		229 x 152 x 127 ( 9" x 6" x 5" )	260 x 260 x 152 (10.2" x 10.2" x 6")	305 x 203 x 152 ( 12" x 8" x 6" )	305 x 305 x 152 ( 12" x 12" x 6" )	406 x 305 x 152 ( 16" x 12" x 6" )	406 x 406 x 152 ( 16" x 16" x 6" )	
<b>FIXING CENTERS (mm)</b>	Vertical	152	170	203	203	267	267	
	Horizontal	208	316	259	361	361	462	
<b>MATERIAL THICKNESS (mm)</b>	BODY	1.2	1.2	1.2	1.2	1.2	1.2	
	DOOR	1.2	1.2	1.2	1.2	1.2	1.5	
<b>WEIGHT (empty)</b>	kg	2.35	2.80	3.4	4.6	5.7	7.1	
<b>TERMINAL MOUNTING RAIL RAIL FIXING CENTERS (mm)</b>	Vertical	129	160	205	205	306	306	
	Horizontal	52	160	103	205	205	306	
<b>RAIL LENGTH (mm)</b>	Vertical	149	180	225	225	326	326	
	Horizontal	72	180	123	225	225	326	
<b>AVAILABLE GLANDING AREA (mm)</b> (with Gland Plates FITTED)	TOP & BOTTOM	108 x 58	214 x 80	156 x 80	261 x 80	261 x 80	337 x 80	
	LEFT & RIGHT	108 x 58	114 x 80	156 x 80	156 x 80	261 x 80	261 x 80	
<b>MAXIMUM ENTRY GUIDE (Metric Glands)</b>	TOP & BOTTOM	M16	6	19	13	23	23	31
		M20	3	11	8	14	14	17
		M25	2	5	4	7	7	9
		M32	1	4	3	5	5	6
		M40	0	3	2	4	4	5
		M50	0	2	2	3	3	4
		M63	0	0	0	0	0	0
	LEFT / RIGHT	M16	6	10	13	13	23	23
		M20	3	5	8	8	14	14
		M25	2	3	4	4	7	7
		M32	1	2	3	3	5	5
		M40	0	1	2	2	4	4
		M50	0	1	2	2	3	3
		M63	0	0	0	0	0	0
<b>TERMINAL CONTENT</b>	Terminal conductor size	Orientation						
	2.5 mm <sup>2</sup>	Vertical	1 x 19	2 x 25	1 x 36	3 x 36	3 x 56	3 x 56
	4 mm <sup>2</sup>	Vertical	1 x 16	2 x 22	1 x 30	2 x 30	2 x 46	3 x 46
	6 mm <sup>2</sup>	Vertical	1 x 12	1 x 17	1 x 23	2 x 23	2 x 36	3 x 36
	10 mm <sup>2</sup>	Vertical	1 x 10	1 x 14	1 x 18	2 x 18	2 x 28	3 x 28
16 mm <sup>2</sup>	Vertical	1 x 9	1 x 11	1 x 15	2 x 15	2 x 23	3 x 23	

- NOTES : -
1. The information provided is based on the physical constraints of the enclosure. Please refer to the certificate for hazardous area applications.
  2. This information is for guidance purposes only. Cooper Crouse-Hinds UK Ltd reserves the right to make any necessary changes without notice

**TECHNICAL DATA SHEET**

**Ex-Cell Range Enclosure**

**METRIC (150 deep)**

CCH REFERENCE		XLH 405015	XLH 504015	XLH 505015	XLH 604015	XLH 605015	XLH 606015		
<b>DIMENSIONS OVERALL (HEIGHT x WIDTH x DEPTH mm)</b> (Imperial Conversion)		406 x 508 x 152 ( 16" x 20" x 6" )	508 x 406 x 152 ( 20" x 16" x 6" )	508 x 508 x 152 ( 20" x 20" x 6" )	610 x 406 x 152 ( 24" x 16" x 6" )	610 x 508 x 152 ( 24" x 20" x 6" )	610 x 610 x 152 ( 24" x 24" x 6" )		
<b>FIXING CENTERS (mm)</b>	Vertical	267	354	354	445	445	445		
	Horizontal	564	462	564	462	564	666		
<b>MATERIAL THICKNESS (mm)</b>	BODY	1.2	1.2	1.2	1.2	1.2	1.2		
	DOOR	1.5	1.5	1.5	1.5	1.5	1.5		
<b>WEIGHT (empty)</b>	kg	8.5	8.5	10.2	9.9	11.8	13.7		
<b>TERMINAL MOUNTING RAIL</b>									
<b>RAIL FIXING CENTERS (mm)</b>	Vertical	306	408	408	510	510	510		
	Horizontal	408	306	408	306	408	510		
<b>RAIL LENGTH (mm)</b>	Vertical	326	428	428	530	530	530		
	Horizontal	428	326	428	326	428	530		
<b>AVAILABLE GLANDING AREA (mm)</b> (with Gland Plates FITTED)									
TOP & BOTTOM		464 x 80	337 x 80	464 x 80	337 x 80	464 x 80	562 x 80		
LEFT & RIGHT		261 x 80	337 x 80	337 x 80	464 x 80	464 x 80	464 x 80		
<b>MAXIMUM ENTRY GUIDE (Metric Glands)</b>									
TOP & BOTTOM		M16	42	31	42	31	42	52	
		M20	22	17	22	17	22	28	
		M25	13	9	13	9	13	15	
		M32	9	6	9	6	9	11	
		M40	7	5	7	5	7	9	
		M50	6	4	6	4	6	7	
LEFT / RIGHT		M63	0	0	0	0	0	0	
		M16	23	31	31	42	42	42	
		M20	14	17	17	22	22	22	
		M25	7	9	9	13	13	13	
		M32	5	6	6	9	9	9	
		M40	4	5	5	7	7	7	
<b>TERMINAL CONTENT</b>		Orientation							
		Terminal conductor size							
		2.5 mm <sup>2</sup>	Vertical	5 x 56	4 x 76	5 x 76	4 x 96	5 x 96	6 x 96
		4 mm <sup>2</sup>	Vertical	4 x 46	3 x 63	4 x 63	3 x 80	4 x 80	6 x 80
6 mm <sup>2</sup>	Vertical	4 x 36	3 x 49	4 x 49	3 x 62	4 x 62	5 x 62		
10 mm <sup>2</sup>	Vertical	4 x 28	3 x 39	4 x 39	3 x 49	4 x 49	5 x 49		
16 mm <sup>2</sup>	Vertical	3 x 23	3 x 32	3 x 32	3 x 40	3 x 40	4 x 40		

- NOTES : -
1. The information provided is based on the physical constraints of the enclosure. Please refer to the certificate for hazardous area applications.
  2. This information is for guidance purposes only. Cooper Crouse-Hinds UK Ltd reserves the right to make any necessary changes without notice

**TECHNICAL DATA SHEET**

**Ex-Cell Range Enclosure**

**METRIC (200 deep)**

CCH REFERENCE		XLH 303020	XLH 403020	XLH 404020	XLH 405020	XLH 504020	XLH 505020	
<b>DIMENSIONS OVERALL (HEIGHT x WIDTH x DEPTH mm)</b> (Imperial Conversion)		305 x 305 x 203 (12" x 12" x 8")	406 x 305 x 203 (16" x 12" x 8")	406 x 406 x 203 (16" x 16" x 8")	406 x 508 x 203 (16" x 20" x 8")	508 x 406 x 203 (20" x 16" x 8")	508 x 508 x 203 (20" x 20" x 8")	
<b>FIXING CENTERS (mm)</b>	Vertical	203	267	267	267	354	354	
	Horizontal	361	361	462	564	462	564	
<b>MATERIAL THICKNESS (mm)</b>	BODY	1.2	1.2	1.2	1.2	1.2	1.2	
	DOOR	1.2	1.2	1.5	1.5	1.5	1.5	
<b>WEIGHT (empty)</b>	kg	5.80	6.6	8.1	9.7	9.7	11.4	
<b>TERMINAL MOUNTING RAIL RAIL FIXING CENTERS (mm)</b>	Vertical	205	306	306	306	408	408	
	Horizontal	205	205	306	408	306	408	
<b>RAIL LENGTH (mm)</b>	Vertical	225	326	326	326	428	428	
	Horizontal	225	225	326	428	326	428	
<b>AVAILABLE GLANDING AREA (mm)</b> (with Gland Plates FITTED)	TOP & BOTTOM	261 x 124	261 x 124	334 x 124	460 x 124	334 x 124	460 x 124	
	LEFT & RIGHT	214 x 124 (L) 261 x 124 (R)	261 x 124	261 x 124	261 x 124	334 x 124	334 x 124	
<b>MAXIMUM ENTRY GUIDE (Metric Glands)</b>	TOP & BOTTOM	M16	32	32	44	61	44	61
		M20	22	22	30	40	30	40
		M25	12	12	15	22	15	22
		M32	8	8	11	15	11	15
		M40	7	7	9	13	9	13
		M50	4	4	6	8	6	8
		M63	2	2	3	4	3	4
	LEFT / RIGHT	M16	28 (L) / 34 (R)	32	32	32	44	44
		M20	15 (L) / 18 (R)	22	22	22	30	30
		M25	12 (L) / 15 (R)	12	12	12	15	15
		M32	6 (L) / 8 (R)	8	8	8	11	11
		M40	5 (L) / 6 (R)	7	7	7	9	9
		M50	2 (L) / 3 (R)	4	4	4	6	6
		M63	2 (L) / 2 (R)	2	2	2	3	3
<b>TERMINAL CONTENT</b>	Terminal Conductor Size Orientation	2.5 mm <sup>2</sup> Vertical	3 x 36	3 x 56	3 x 56	5 x 56	4 x 76	5 x 76
		4 mm <sup>2</sup> Vertical	2 x 30	2 x 46	2 x 46	2 x 46	3 x 63	4 x 63
		6 mm <sup>2</sup> Vertical	2 x 23	2 x 36	2 x 36	2 x 36	3 x 49	4 x 49
		10 mm <sup>2</sup> Vertical	2 x 18	2 x 28	2 x 28	2 x 28	3 x 39	4 x 39
		16 mm <sup>2</sup> Vertical	2 x 15	2 x 23	2 x 23	2 x 23	3 x 32	3 x 32

NOTES : - 1. The information provided is based on the physical constraints of the enclosure. Please refer to the certificate for hazardous area applications.  
 2. This information is for guidance purposes only. Cooper Crouse-Hinds UK Ltd reserves the right to make any necessary changes without notice

**TECHNICAL DATA SHEET**

**Ex-Cell Range Enclosure**

**METRIC (200 deep)**

CCH REFERENCE		XLH 506020	XLH 604020	XLH 605020	XLH 606020	XLH 607620	XLH 765020
<b>DIMENSIONS OVERALL (HEIGHT x WIDTH x DEPTH mm) (Imperial Conversion)</b>		508 x 610 x 203 (20" x 24" x 8")	610 x 406 x 203 (24" x 16" x 8")	610 x 508 x 203 (24" x 20" x 8")	610 x 610 x 203 (24" x 24" x 8")	610 x 762 x 203 (24" x 30" x 8")	762 x 508 x 203 (30" x 20" x 8")
<b>FIXING CENTERS (mm)</b>	Vertical	354	445	445	445	445	508
	Horizontal	666	462	564	666	818	564
<b>MATERIAL THICKNESS (mm)</b>	BODY	1.2	1.2	1.2	1.2	1.2	1.2
	DOOR	1.5	1.5	1.5	1.5	1.5	1.5
<b>WEIGHT (empty)</b>	kg	13.2	11.2	13.2	15.3	18.3	15.9
<b>TERMINAL MOUNTING RAIL RAIL FIXING CENTERS (mm)</b>	Vertical	408	510	510	510	510	662
	Horizontal	510	306	408	510	662	408
<b>RAIL LENGTH (mm)</b>	Vertical	428	530	530	530	530	682
	Horizontal	530	326	428	530	682	428
<b>AVAILABLE GLANDING AREA (mm) (with Gland Plates FITTED)</b>	TOP & BOTTOM	562 x 124	334 x 124	460 x 124	562 x 124	714 x 124	460 x 124
	LEFT & RIGHT	334 x 124	460 x 124	460 x 124	460 x 124	460 x 124	562 x 124
<b>MAXIMUM ENTRY GUIDE (Metric Glands)</b>							
TOP & BOTTOM	M16	74	44	62	74	100	62
	M20	52	30	35	52	63	35
	M25	29	15	29	29	34	29
	M32	18	11	15	18	22	15
	M40	15	9	13	15	19	13
	M50	10	6	5	10	13	5
	M63	6	3	4	6	7	4
LEFT / RIGHT	M16	44	62	62	62	62	74
	M20	30	35	35	35	35	52
	M25	15	29	29	29	29	29
	M32	11	15	15	15	15	18
	M40	9	13	13	13	13	15
	M50	6	5	5	5	5	10
	M63	3	4	4	4	4	6
<b>TERMINAL CONTENT</b>							
Terminal Conductor Size	Orientation						
2.5 mm <sup>2</sup>	Vertical	6 x 76	4 x 96	5 x 96	6 x 96	8 x 96	5 x 125
4 mm <sup>2</sup>	Vertical	6 x 63	3 x 80	4 x 80	6 x 80	7 x 80	4 x 105
6 mm <sup>2</sup>	Vertical	5 x 49	3 x 62	4 x 62	5 x 62	7 x 62	4 x 81
10 mm <sup>2</sup>	Vertical	5 x 39	3 x 49	4 x 49	5 x 49	6 x 49	4 x 64
16 mm <sup>2</sup>	Vertical	4 x 32	3 x 40	3 x 40	4 x 40	5 x 40	3 x 53

NOTES : - 1. The information provided is based on the physical constraints of the enclosure. Please refer to the certificate for hazardous area applications.  
 2. This information is for guidance purposes only. Cooper Crouse-Hinds UK Ltd reserves the right to make any necessary changes without notice

**TECHNICAL DATA SHEET**

**Ex-Cell Range Enclosure**

**METRIC (200 deep)**

CCH REFERENCE		XLH 766020	XLH 767620	XLH 806020	XLH 808020	XLH 906020	XLH 907620
<b>DIMENSIONS OVERALL (HEIGHT x WIDTH x DEPTH mm) (Imperial Conversion)</b>		762 x 610 x 203 (30" x 24" x 8")	762 x 762 x 203 (30" x 30" x 8")	800 x 610 x 203 (32" x 24" x 8")	800 x 800 x 203 (32" x 32" x 8")	914 x 610 x 203 (36" x 24" x 8")	914 x 762 x 203 (36" x 30" x 8")
<b>FIXING CENTERS (mm)</b>	Vertical	608	508	500	500	650	650
	Horizontal	666	818	666	856	666	818
<b>MATERIAL THICKNESS (mm)</b>	BODY	1.2	1.2	1.2	1.2	1.2	1.2
	DOOR	1.5	1.5	1.5	1.5	1.5	1.5
<b>WEIGHT (empty)</b>	kg	18.3	21.9	19.22	24.25	20.80	24.91
<b>TERMINAL MOUNTING RAIL RAIL FIXING CENTERS (mm)</b>	Vertical	662	662	700	700	814	814
	Horizontal	510	662	510	700	510	662
<b>RAIL LENGTH (mm)</b>	Vertical	682	682	720	720	834	834
	Horizontal	530	682	530	720	530	682
<b>AVAILABLE GLANDING AREA (mm) (with Gland Plates FITTED)</b>	TOP & BOTTOM	562 x 124	714 x 124	562 x 124	712 x 124	870 x 124	870 x 124
	LEFT & RIGHT	562 x 124	562 x 124	562 x 124	358 x 124	562 x 124	562 x 124
<b>MAXIMUM ENTRY GUIDE (Metric Glands)</b>							
TOP & BOTTOM	M16	74	100	74	92	112	112
	M20	52	63	52	57	69	69
	M25	29	34	29	28	34	34
	M32	18	22	18	24	30	30
	M40	15	19	15	11	13	13
	M50	10	13	10	9	11	11
	M63	6	7	6	7	9	9
LEFT / RIGHT	M16	74	74	74	44	74	74
	M20	52	52	52	27	52	52
	M25	29	29	29	14	29	29
	M32	18	18	18	12	18	18
	M40	15	15	15	5	15	15
	M50	10	10	10	4	10	10
	M63	6	6	6	3	6	6
<b>TERMINAL CONTENT</b>							
Terminal Conductor Size	Orientation						
2.5 mm <sup>2</sup>	Vertical	6 x 125	8 x 125	6 x 133	8 x 133	6 x 155	8 x 155
4 mm <sup>2</sup>	Vertical	6 x 105	7 x 105	6 x 111	7 x 111	6 x 130	7 x 130
6 mm <sup>2</sup>	Vertical	5 x 81	7 x 81	5 x 86	7 x 86	5 x 100	7 x 100
10 mm <sup>2</sup>	Vertical	5 x 64	6 x 64	5 x 68	6 x 68	5 x 80	6 x 80
16 mm <sup>2</sup>	Vertical	4 x 53	5 x 53	4 x 56	6 x 56	4 x 66	5 x 66

NOTES : - 1. The information provided is based on the physical constraints of the enclosure. Please refer to the certificate for hazardous area applications.  
 2. This information is for guidance purposes only. Cooper Crouse-Hinds UK Ltd reserves the right to make any necessary changes without notice

**TECHNICAL DATA SHEET**

**Ex-Cell Range Enclosure**

**METRIC (200 deep)**

CCH REFERENCE		XLH 909020	XLH 1006020	XLH 1008020	XLH 10010020	
<b>DIMENSIONS OVERALL (HEIGHT x WIDTH x DEPTH mm) (Imperial Conversion)</b>		914 x 914 x 203 (36" x 36" x 8")	1000 x 610 x 203 (40" x 24" x 8")	1000 x 800 x 203 (40" x 32" x 8")	1000 x 1000 x 203 (40" x 40" x 8")	
<b>FIXING CENTERS (mm)</b>	Vertical	650	700	700	700	
	Horizontal	970	666	856	1056	
<b>MATERIAL THICKNESS (mm)</b>	BODY	1.2	1.2	1.2	1.2	
	DOOR	1.5	1.5	1.5	1.5	
<b>WEIGHT (empty)</b>	kg	29.02	22.87	22.87	28.77	
<b>TERMINAL MOUNTING RAIL</b>						
<b>RAIL FIXING CENTERS (mm)</b>	Vertical	814	900	900	900	
	Horizontal	814	510	700	900	
<b>RAIL LENGTH (mm)</b>	Vertical	834	920	920	920	
	Horizontal	834	530	720	920	
<b>AVAILABLE GLANDING AREA (mm) (with Gland Plates FITTED)</b>						
TOP & BOTTOM		870 x 124	970 x 124	712 x 124	712 x 124	
LEFT & RIGHT		870 x 124	562 x 124	358 x 124	712 x 124	
<b>MAXIMUM ENTRY GUIDE (Metric Glands)</b>						
TOP & BOTTOM		M16	112	124	74	92
		M20	69	78	52	57
		M25	34	38	29	28
		M32	30	34	18	24
		M40	13	15	15	11
		M50	11	13	10	9
		M63	9	10	6	7
LEFT / RIGHT		M16	112	74	74	92
		M20	69	52	52	57
		M25	34	29	29	28
		M32	30	18	18	24
		M40	13	15	15	11
		M50	11	10	10	9
		M63	9	6	6	7
<b>TERMINAL CONTENT</b>						
Terminal Conductor Size	Orientation					
2.5 mm <sup>2</sup>	Vertical	9 x 155	6 x 172	8 x 172	10 x 172	
4 mm <sup>2</sup>	Vertical	9 x 130	5 x 144	7 x 144	9 x 144	
6 mm <sup>2</sup>	Vertical	8 x 100	5 x 111	7 x 111	9 x 111	
10 mm <sup>2</sup>	Vertical	7 x 80	5 x 88	6 x 88	8 x 88	
16 mm <sup>2</sup>	Vertical	6 x 66	4 x 73	6 x 73	7 x 73	

NOTES : - 1. The information provided is based on the physical constraints of the enclosure. Please refer to the certificate of conformity for detailed information.  
 2. This information is for guidance purposes only. Cooper Crouse-Hinds UK Ltd reserves the right to make an

TECHNICAL DATA SHEET

Ex-Cell Range Enclosure

METRIC (254 deep)

CCH REFERENCE			XLH 303025	XLH 403025	XLH 404025	XLH 405025	XLH 504025	XLH 505025
DIMENSIONS OVERALL (HEIGHT x WIDTH x DEPTH mm) (Imperial Conversion)			305 x 305 x 254 (12" x 12" x 10")	406 x 305 x 254 (16" x 12" x 10")	406 x 406 x 254 (16" x 16" x 10")	406 x 508 x 254 (16" x 20" x 10")	508 x 406 x 254 (20" x 16" x 10")	508 x 508 x 254 (20" x 20" x 10")
FIXING CENTERS (mm)	Vertical		203	267	267	267	354	354
	Horizontal		361	361	462	564	462	564
MATERIAL THICKNESS (mm)	BODY		1.2	1.2	1.2	1.2	1.2	1.2
	DOOR		1.2	1.2	1.5	1.5	1.5	1.5
WEIGHT (empty)		kg	5.80	6.6	8.1	9.7	9.7	11.4
TERMINAL MOUNTING RAIL								
RAIL FIXING CENTERS (mm)	Vertical		205	306	306	306	408	408
	Horizontal		205	205	306	408	306	408
RAIL LENGTH (mm)	Vertical		225	326	326	326	428	428
	Horizontal		225	225	326	428	326	428
AVAILABLE GLANDING AREA (mm) (with Gland Plates FITTED)								
		TOP & BOTTOM	261 x 180	261 x 180	334 x 180	460 x 180	334 x 180	460 x 180
		LEFT & RIGHT	214 x 180 (L) 261 x 180 (R)	261 x 180	261 x 180	261 x 180	334 x 180	334 x 180
MAXIMUM ENTRY GUIDE (Metric Glands)								
		TOP & BOTTOM						
	M16		52	52	70	108	70	98
	M20		30	30	38	57	38	52
	M25		19	19	25	42	25	38
	M32		11	11	16	24	16	22
	M40		8	8	12	19	12	17
	M50		5	5	7	10	7	9
	M63		4	4	5	8	5	7
		LEFT / RIGHT						
	M16		49(L) / 52 (R)	52	52	52	70	70
	M20		25 (L) / 30 (R)	30	30	30	38	38
	M25		17(L) / 19 (R)	19	19	19	25	25
	M32		10(L) / 11 (R)	11	11	11	16	16
	M40		7(L) / 8 (R)	8	8	8	12	12
	M50		4 (L) / 5 (R)	5	5	5	7	7
	M63		3(L) / 4 (R)	4	4	4	5	5
TERMINAL CONTENT								
Terminal Conductor Size		Orientation						
2.5 mm <sup>2</sup>		Vertical	3 x 36	3 x 56	3 x 56	5 x 56	4 x 76	5 x 76
4 mm <sup>2</sup>		Vertical	2 x 30	2 x 46	2 x 46	2 x 46	3 x 63	4 x 63
6 mm <sup>2</sup>		Vertical	2 x 23	2 x 36	2 x 36	2 x 36	3 x 49	4 x 49
10 mm <sup>2</sup>		Vertical	2 x 18	2 x 28	2 x 28	2 x 28	3 x 39	4 x 39
16 mm <sup>2</sup>		Vertical	2 x 15	2 x 23	2 x 23	2 x 23	3 x 32	3 x 32

NOTES : - 1. The information provided is based on the physical constraints of the enclosure. Please refer to the certificate for hazardous area applications.  
2. This information is for guidance purposes only. Cooper Crouse-Hinds UK Ltd reserves the right to make any necessary changes without notice

TECHNICAL DATA SHEET

Ex-Cell Range Enclosure

METRIC (254 deep)

CCH REFERENCE			XLH 506025	XLH 604025	XLH 605025	XLH 606025	XLH 607625	XLH 765025
DIMENSIONS OVERALL (HEIGHT x WIDTH x DEPTH mm) (Imperial Conversion)			508 x 610 x 254 (20" x 24" x 10" )	610 x 406 x 254 (24" x 16" x108" )	610 x 508 x 254 (24" x 20" x 10" )	610 x 610 x 254 (24" x 24" x 10" )	610 x 762 x 254 (24" x 30" x 10" )	762 x 508 x 254 (30" x 20" x 10" )
FIXING CENTERS (mm)	Vertical		354	445	445	445	445	508
	Horizontal		666	462	564	666	818	564
MATERIAL THICKNESS (mm)	BODY		1.2	1.2	1.2	1.2	1.2	1.2
	DOOR		1.5	1.5	1.5	1.5	1.5	1.5
WEIGHT (empty)		kg	13.2	11.2	13.2	15.3	18.3	15.9
TERMINAL MOUNTING RAIL								
RAIL FIXING CENTERS (mm)	Vertical		408	510	510	510	510	662
	Horizontal		510	306	408	510	662	408
RAIL LENGTH (mm)	Vertical		428	530	530	530	530	682
	Horizontal		530	326	428	530	682	428
AVAILABLE GLANDING AREA (mm) (with Gland Plates FITTED)								
		TOP & BOTTOM	562 x 180	334 x 180	460 x 180	562 x 180	714 x 180	460 x 180
		LEFT & RIGHT	334 x 180	460 x 180	460 x 180	460 x 180	460 x 180	562 x 180
MAXIMUM ENTRY GUIDE (Metric Glands)								
		TOP & BOTTOM						
		M16	136	70	98	98	98	98
		M20	72	38	52	52	52	52
		M25	48	25	38	38	38	38
		M32	30	16	22	22	22	22
		M40	24	12	17	17	17	17
		M50	14	7	9	9	9	9
		M63	10	5	7	7	7	7
		LEFT / RIGHT						
		M16	70	98	98	98	98	122
		M20	38	52	52	52	52	65
		M25	25	38	38	38	38	44
		M32	16	22	22	22	22	27
		M40	12	17	17	17	17	22
		M50	7	9	9	9	9	12
		M63	5	7	7	7	7	9
TERMINAL CONTENT								
Terminal Conductor Size		Orientation						
	2.5 mm <sup>2</sup>	Vertical	6 x 76	4 x 96	5 x 96	6 x 96	8 x 96	5 x 125
	4 mm <sup>2</sup>	Vertical	6 x 63	3 x 80	4 x 80	6 x 80	7 x 80	4 x 105
	6 mm <sup>2</sup>	Vertical	5 x 49	3 x 62	4 x 62	5 x 62	7 x 62	4 x 81
	10 mm <sup>2</sup>	Vertical	5 x 39	3 x 49	4 x 49	5 x 49	6 x 49	4 x 64
	16 mm <sup>2</sup>	Vertical	4 x 32	3 x 40	3 x 40	4 x 40	5 x 40	3 x 53

- NOTES
1. The information provided is based on the physical constraints of the enclosure. Please refer to the certificate for hazardous area applications.
  2. This information is for guidance purposes only. Cooper Crouse-Hinds UK Ltd reserves the right to make any necessary changes without notice

TECHNICAL DATA SHEET

Ex-Cell Range Enclosure

METRIC (254 deep)

CCH REFERENCE			XLH 766025	XLH 767625	XLH 806025	XLH 808025	XLH 906025	XLH 907625
DIMENSIONS OVERALL (HEIGHT x WIDTH x DEPTH mm) (Imperial Conversion)			762 x 610 x 254 (30" x 24" x 10" )	762 x 762 x 254 (30" x 30" x 10" )	914 x 762 x 254 (36" x 30" x 10" )	800 x 800 x 254 (32" x 32" x 10" )	914 x 610 x 254 (36" x 24" x 10" )	914 x 762 x 254 (36" x 30" x 10" )
FIXING CENTERS (mm)	Vertical		608	508	500	500	650	650
	Horizontal		666	818	666	856	666	818
MATERIAL THICKNESS (mm)	BODY		1.2	1.2	1.2	1.2	1.2	1.2
	DOOR		1.5	1.5	1.5	1.5	1.5	1.5
WEIGHT (empty)		kg	18.3	21.9	21.06	26.44	23.20	27.65
TERMINAL MOUNTING RAIL								
RAIL FIXING CENTERS (mm)	Vertical		662	662	700	700	814	814
	Horizontal		510	662	510	700	510	662
RAIL LENGTH (mm)	Vertical		682	682	720	720	834	834
	Horizontal		530	682	530	720	530	682
AVAILABLE GLANDING AREA (mm) (with Gland Plates FITTED)								
		TOP & BOTTOM	562 x 180	714 x 180	562 x 180	712 x 180	870 x 180	870 x 180
		LEFT & RIGHT	562 x 180	562 x 180	562 x 180	358 x 180	562 x 180	562 x 180
MAXIMUM ENTRY GUIDE (Metric Glands)								
		TOP & BOTTOM						
		M16	122	136	122	136	140	140
		M20	65	72	65	72	92	92
		M25	44	48	44	48	51	51
		M32	27	30	27	30	45	45
		M40	22	24	22	24	26	26
		M50	12	14	12	14	22	22
		M63	9	10	9	10	9	9
		LEFT / RIGHT						
		M16	122	122	122	55	122	122
		M20	65	65	65	36	65	65
		M25	44	44	44	21	44	44
		M32	27	27	27	18	27	27
		M40	22	22	22	10	22	22
		M50	12	12	12	8	12	12
		M63	9	9	9	3	9	9
TERMINAL CONTENT								
Terminal Conductor Size		Orientation						
2.5 mm <sup>2</sup>		Vertical	6 x 125	8 x 125	6 x 133	8 x 133	6 x 155	8 x 155
4 mm <sup>2</sup>		Vertical	6 x 105	7 x 105	6 x 111	7 x 111	6 x 130	7 x 130
6 mm <sup>2</sup>		Vertical	5 x 81	7 x 81	5 x 86	7 x 86	5 x 100	7 x 100
10 mm <sup>2</sup>		Vertical	5 x 64	6 x 64	5 x 68	6 x 68	5 x 80	6 x 80
16 mm <sup>2</sup>		Vertical	4 x 53	5 x 53	4 x 56	6 x 56	4 x 66	5 x 66

- NOTES
1. The information provided is based on the physical constraints of the enclosure. Please refer to the certificate for hazardous area applications.
  2. This information is for guidance purposes only. Cooper Crouse-Hinds UK Ltd reserves the right to make any necessary changes without notice

TECHNICAL DATA SHEET

Ex-Cell Range Enclosure

METRIC (254 deep)

CCH REFERENCE		XLH 909025	XLH 1006025	XLH 1008025	XLH 10010025	XLH 1206025	XLH 1208025	XLH 1209025			
DIMENSIONS OVERALL (HEIGHT x WIDTH x DEPTH mm) (Imperial Conversion)		914 x 914 x 254 (36" x 36" x 10" )	1000 x 610 x 254 (40" x 24" x 10" )	1000 x 800 x 254 (40" x 32" x 10" )	1000 x 1000 x 254 (40" x 40" x 10" )	1200 x 610 x 254 (48" x 24" x 10" )	1200 x 800 x 254 (48" x 32" x 10" )	1200 x 914 x 254 (48" x 36" x 10" )			
FIXING CENTERS (mm)	Vertical	650	700	700	700	900	900	900			
	Horizontal	970	666	856	1056	666	856	970			
MATERIAL THICKNESS (mm)	BODY	1.2	1.2	1.2	1.2	1.2	1.2	1.2			
	DOOR	1.5	1.5	1.5	1.5	1.5	1.5	1.5			
WEIGHT (empty)	kg	32.11	24.88	31.14	37.41	29.04	36.34	39.98			
TERMINAL MOUNTING RAIL											
RAIL FIXING CENTERS (mm)	Vertical	814	900	900	900	1100	1100	1100			
	Horizontal	662	510	900	900	510	700	814			
RAIL LENGTH (mm)	Vertical	834	920	920	920	1120	1120	1120			
	Horizontal	682	530	920	920	530	720	834			
AVAILABLE GLANDING AREA (mm) (with Gland Plates FITTED)											
TOP & BOTTOM		870 x 180	970 x 180	712 x 180	958 x 180	566 x 180	712 x 180	826 x 180			
LEFT & RIGHT		870 x 180	562 x 180	358 x 180	958 x 180	912 x 180	912 x 180	912 x 180			
MAXIMUM ENTRY GUIDE (Metric Glands)											
TOP & BOTTOM		M16	140	155	136	155	122	136	135		
		M20	92	104	72	100	65	72	88		
		M25	51	57	48	57	44	48	48		
		M32	45	51	30	48	27	30	42		
		M40	26	30	24	28	22	24	24		
		M50	22	26	14	24	12	14	22		
		M63	9	10	10	10	9	10	8		
		LEFT / RIGHT		M16	140	122	55	155	150	150	150
				M20	92	65	36	100	96	96	96
				M25	51	44	21	57	54	54	54
M32	45			27	18	48	48	48	48		
M40	26			22	10	28	28	28	28		
M50	22			12	8	24	24	24	24		
M63	9			9	3	10	9	9	9		
TERMINAL CONTENT											
Terminal Conductor Size	Orientation										
2.5 mm <sup>2</sup>	Vertical	9 x 155	6 x 172	10 x 172	10 x 172	10 x 211	8 x 211	9 x 211			
4 mm <sup>2</sup>	Vertical	9 x 130	5 x 144	9 x 144	9 x 144	9 x 177	7 x 177	9 x 177			
6 mm <sup>2</sup>	Vertical	8 x 100	5 x 111	9 x 111	9 x 111	9 x 136	7 x 136	8 x 136			
10 mm <sup>2</sup>	Vertical	7 x 80	5 x 88	8 x 88	8 x 88	8 x 109	6 x 109	7 x 109			
16 mm <sup>2</sup>	Vertical	6 x 66	4 x 73	7 x 73	7 x 73	7 x 90	6 x 90	6 x 90			

- NOTES
1. The information provided is based on the physical constraints of the enclosure. Please refer to the certificate for hazardous area applications.
  2. This information is for guidance purposes only. Cooper Crouse-Hinds UK Ltd reserves the right to make any necessary changes without notice

TECHNICAL DATA SHEET

Ex-Cell Range Enclosure

METRIC (300 deep)

CCH REFERENCE			XLH 404030	XLH 405030	XLH 504030	XLH 505030	XLH 506030	XLH 604030
DIMENSIONS OVERALL (HEIGHT x WIDTH x DEPTH mm) (Imperial Conversion)			406 x 406 x 300 (16" x 16" x 12")	406 x 508 x 300 (16" x 20" x 12")	508 x 406 x 300 (20" x 16" x 12")	508 x 508 x 300 (20" x 20" x 12")	508 x 610 x 300 (20" x 24" x 12")	610 x 406 x 300 (24" x 16" x 12")
FIXING CENTERS (mm)	Vertical		267	267	354	354	354	445
	Horizontal		462	564	462	564	666	462
MATERIAL THICKNESS (mm)	BODY		1.2	1.2	1.2	1.2	1.2	1.2
	DOOR		1.5	1.5	1.5	1.5	1.5	1.5
WEIGHT (empty)		kg	8.1	9.7	9.7	11.4	13.2	11.2
TERMINAL MOUNTING RAIL								
RAIL FIXING CENTERS (mm)	Vertical		306	306	408	408	408	510
	Horizontal		306	408	306	408	510	306
RAIL LENGTH (mm)	Vertical		326	326	428	428	428	530
	Horizontal		326	428	326	428	530	326
AVAILABLE GLANDING AREA (mm) (with Gland Plates FITTED)								
		TOP & BOTTOM	334 x 231	460 x 231	334 x 231	460 x 231	562 x 231	334 x 231
		LEFT & RIGHT	261 x 231	261 x 231	334 x 231	334 x 231	334 x 231	460 x 231
MAXIMUM ENTRY GUIDE (Metric Glands)								
		M16	44	61	44	61	74	44
		M20	30	40	30	40	52	30
		M25	15	22	15	22	29	15
TOP & BOTTOM	M32		11	15	11	22	18	11
	M40		9	13	9	15	15	9
	M50		6	8	6	13	10	6
	M63		3	4	3	8	6	3
	M16		34	34	44	44	44	62
	M20		18	18	26	26	26	35
LEFT / RIGHT	M25		15	15	21	21	21	29
	M32		8	8	11	11	11	15
	M40		6	6	9	9	9	13
	M50		3	3	4	4	4	5
	M63		2	2	3	3	3	4
	TERMINAL CONTENT							
Terminal Conductor Size		Orientation						
2.5 mm <sup>2</sup>		Vertical	3 x 56	5 x 56	4 x 76	5 x 76	6 x 76	4 x 96
4 mm <sup>2</sup>		Vertical	2 x 46	2 x 46	3 x 63	4 x 63	6 x 63	3 x 80
6 mm <sup>2</sup>		Vertical	2 x 36	2 x 36	3 x 49	4 x 49	5 x 49	3 x 62
10 mm <sup>2</sup>		Vertical	2 x 28	2 x 28	3 x 39	4 x 39	5 x 39	3 x 49
16 mm <sup>2</sup>		Vertical	2 x 23	2 x 23	3 x 32	3 x 32	4 x 32	3 x 40

- Notes:
- The information provided is based on the physical constraints of the enclosure. Please refer to the certificate for hazardous area applications.
  - This information is for guidance purposes only. Cooper Crouse-Hinds UK Ltd reserves the right to make any necessary changes without notice.

CCH REFERENCE		XLH 605030	XLH 606030	XLH 607630	XLH 765030	XLH 766030	XLH 767630
DIMENSIONS OVERALL (HEIGHT x WIDTH x DEPTH mm) (Imperial Conversion)		610 x 508 x 300 (24" x 20" x 12")	610 x 610 x 300 (24" x 24" x 12")	610 x 762 x 300 (24" x 30" x 12")	762 x 508 x 300 (30" x 20" x 12")	762 x 610 x 300 (30" x 24" x 12")	762 x 762 x 300 (30" x 30" x 12")
FIXING CENTERS (mm)	Vertical	445	445	445	508	608	508
	Horizontal	564	666	818	564	666	818
MATERIAL THICKNESS (mm)	BODY	1.2	1.2	1.2	1.2	1.2	1.2
	DOOR	1.5	1.5	1.5	1.5	1.5	1.5
WEIGHT (empty)	kg	13.2	15.3	18.3	15.9	18.3	21.9
TERMINAL MOUNTING RAIL							
RAIL FIXING CENTERS (mm)	Vertical	510	510	510	662	662	662
	Horizontal	408	510	662	408	510	662
RAIL LENGTH (mm)	Vertical	530	530	530	682	682	682
	Horizontal	428	530	682	428	530	682
AVAILABLE GLANDING AREA (mm) (with Gland Plates FITTED)							
TOP & BOTTOM		460 x 231	562 x 231	714 x 231	460 x 231	562 x 231	714 x 231
LEFT & RIGHT		460 x 231	460 x 231	460 x 231	562 x 231	562 x 231	562 x 231
MAXIMUM ENTRY GUIDE (Metric Glands)							
TOP & BOTTOM	M16	41	74	100	61	74	100
	M20	40	52	63	40	52	63
	M25	22	29	34	22	29	34
	M32	15	18	22	15	18	22
	M40	13	15	19	13	15	19
	M50	8	10	13	8	10	13
	M63	4	6	7	4	6	7
LEFT / RIGHT	M16	62	62	62	78	78	78
	M20	35	35	35	44	44	44
	M25	29	29	29	36	36	36
	M32	15	15	15	19	19	19
	M40	13	13	13	16	16	16
	M50	5	5	5	7	7	7
	M63	4	4	4	5	5	5
TERMINAL CONTENT							
Terminal Conductor Size	Orientation						
2.5 mm <sup>2</sup>	Vertical	5 x 96	6 x 96	8 x 96	5 x 125	6 x 125	8 x 125
4 mm <sup>2</sup>	Vertical	4 x 80	6 x 80	7 x 80	4 x 105	6 x 105	7 x 105
6 mm <sup>2</sup>	Vertical	4 x 62	5 x 62	7 x 62	4 x 81	5 x 81	7 x 81
10 mm <sup>2</sup>	Vertical	4 x 49	5 x 49	6 x 49	4 x 64	5 x 64	6 x 64
16 mm <sup>2</sup>	Vertical	3 x 40	4 x 40	5 x 40	3 x 53	4 x 53	5 x 53

- Notes:
1. The information provided is based on the physical constraints of the enclosure. Please refer to the certificate for hazardous area applications.
  2. This information is for guidance purposes only. Cooper Crouse-Hinds UK Ltd reserves the right to make any necessary changes without notice.

TECHNICAL DATA SHEET

Ex-Cell Range Enclosure

METRIC (300 deep)

CCH REFERENCE			XLH 806030	XLH 808030	XLH 906030	XLH 907630	XLH 909030	XLH 1006030
DIMENSIONS OVERALL (HEIGHT x WIDTH x DEPTH mm) (Imperial Conversion)			800 x 610 x 300 (32" x 24" x 12")	800 x 800 x 300 (32" x 32" x 12")	914 x 610 x 300 (36" x 24" x 12")	914 x 762 x 300 (36" x 30" x 12")	914 x 914 x 300 (36" x 36" x 12")	1000 x 610 x 300 (40" x 24" x 12")
FIXING CENTERS (mm)	Vertical		500	500	650	650	650	700
	Horizontal		666	666	666	818	970	666
MATERIAL THICKNESS (mm)	BODY		1.2	1.2	1.2	1.2	1.2	1.2
	DOOR		1.5	1.5	1.5	1.5	1.5	1.5
WEIGHT (empty)		kg	21.90	28.63	25.18	29.90	34.61	26.92
TERMINAL MOUNTING RAIL								
RAIL FIXING CENTERS (mm)	Vertical		700	700	814	814	814	900
	Horizontal		510	700	510	662	662	510
RAIL LENGTH (mm)	Vertical		720	720	834	834	834	920
	Horizontal		530	720	530	682	682	530
AVAILABLE GLANDING AREA (mm) (with Gland Plates FITTED)								
		TOP & BOTTOM	562 x 231	714 x 231	870 x 231	870 x 231	870 x 231	970 x 231
		LEFT & RIGHT	562 x 231	358 x 231	562 x 231	562 x 180	870 x 231	562 x 231
MAXIMUM ENTRY GUIDE (Metric Glands)								
		M16	74	161	196	196	196	217
		M20	52	114	138	138	138	156
		M25	29	56	68	68	68	76
TOP & BOTTOM		M32	18	48	60	60	60	68
		M40	15	33	39	39	39	45
		M50	10	27	33	33	33	39
		M63	6	14	18	18	18	20
		M16	78	77	78	78	196	78
		M20	44	54	44	44	138	44
LEFT / RIGHT		M25	36	28	36	36	68	36
		M32	19	24	19	19	60	19
		M40	16	15	16	16	39	16
		M50	7	12	7	7	33	7
		M63	5	6	5	5	18	5
TERMINAL CONTENT								
Terminal Conductor Size		Orientation						
2.5 mm <sup>2</sup>		Vertical	6 x 133 0	8 x 133 0	6 x 155 0	8 x 155 0	9 x 155 0	6 x 172 0
4 mm <sup>2</sup>		Vertical	6 x 111 0	7 x 111 0	6 x 130 0	7 x 130 0	9 x 130 0	5 x 144 0
6 mm <sup>2</sup>		Vertical	5 x 86 0	7 x 86 0	5 x 100 0	7 x 100 0	8 x 100 0	5 x 111 0
10 mm <sup>2</sup>		Vertical	5 x 68 0	6 x 68 0	5 x 80 0	6 x 80 0	7 x 80 0	5 x 88 0
16 mm <sup>2</sup>		Vertical	4 x 56	6 x 56	4 x 66	5 x 66	6 x 66	4 x 73

- Notes:
1. The information provided is based on the physical constraints of the enclosure. Please refer to the certificate for hazardous area applications.
  2. This information is for guidance purposes only. Cooper Crouse-Hinds UK Ltd reserves the right to make any necessary changes without notice

TECHNICAL DATA SHEET

Ex-Cell Range Enclosure

METRIC (300 deep)

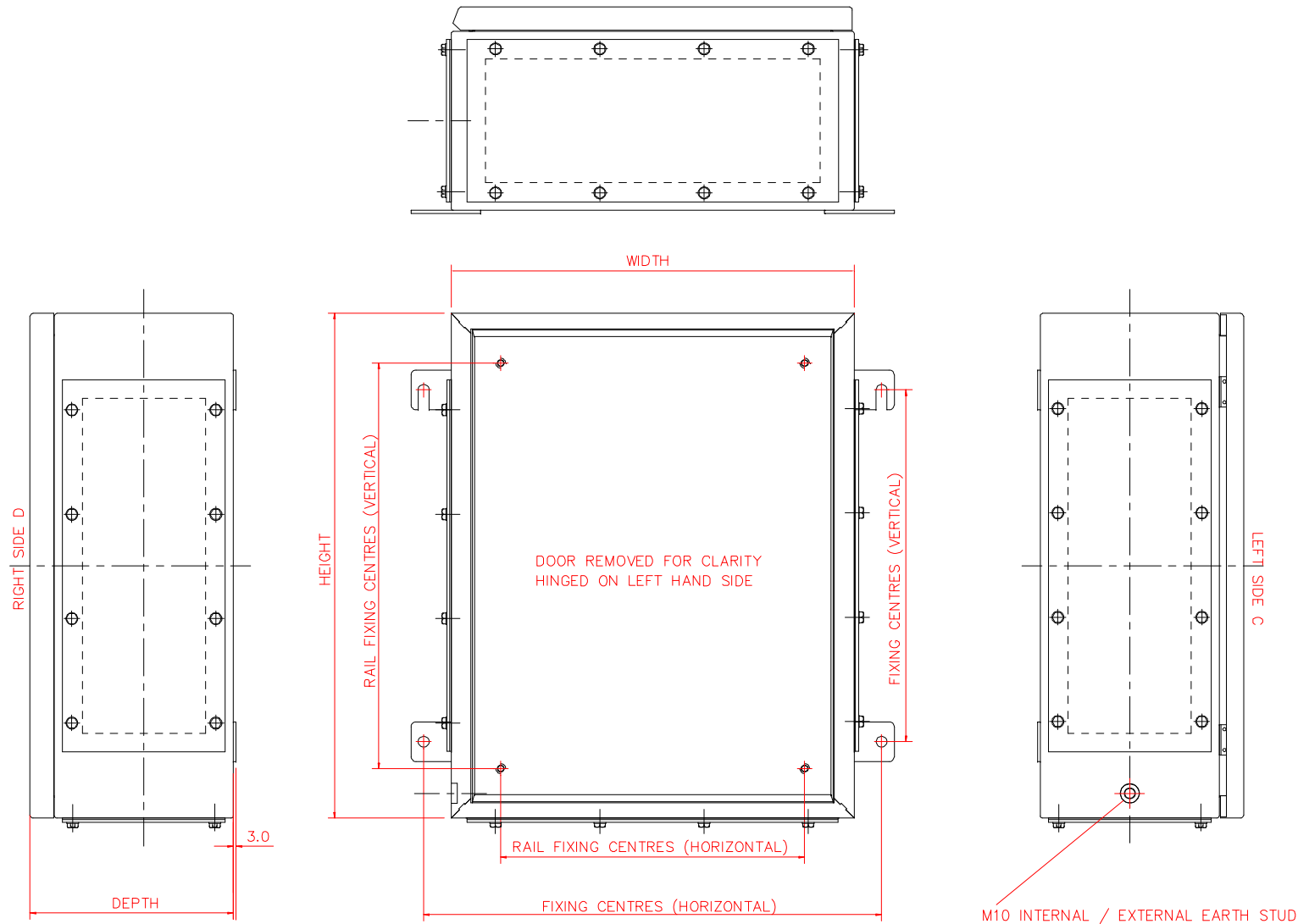
CCH REFERENCE			XLH 1008030	XLH 10010030	XLH 1206030	XLH 1208030	XLH 1209030	XLH 12010030	XLH 12012030
DIMENSIONS OVERALL (HEIGHT x WIDTH x DEPTH mm) (Imperial Conversion)			1000 x 800 x 300 (40" x 32" x 12")	1000 x 1000 x 300 (40" x 40" x 12")	1200 x 610 x 300 (48" x 24" x 12")	1200 x 800 x 300 (48" x 32" x 12")	1200 x 914 x 300 (48" x 36" x 12")	1200 x 1000 x 300 (48" x 40" x 12")	1200 x 1200 x 300 (48" x 48" x 12")
FIXING CENTERS (mm)	Vertical		700	700	900	900	900	900	900
	Horizontal		856	1056	666	856	970	1056	1256
MATERIAL THICKNESS (mm)	BODY		1.2	1.2	1.2	1.2	1.2	1.2	1.2
	DOOR		1.5	1.5	1.5	1.5	1.5	1.5	1.5
WEIGHT (empty)		kg	33.53	40.14	30.94	38.43	42.79	45.93	53.42
TERMINAL MOUNTING RAIL									
RAIL FIXING CENTERS (mm)	Vertical		900	900	1100	1100	1100	1100	1100
	Horizontal		700	900	510	700	814	900	1100
RAIL LENGTH (mm)	Vertical		920	920	1120	1120	1120	1120	1120
	Horizontal		720	920	530	720	834	920	1120
AVAILABLE GLANDING AREA (mm) (with Gland Plates FITTED)									
		TOP & BOTTOM	712 x 231	958 x 231	566 x 231	712 x 231	826 x 231	958 x 231	556 x 231 (2off)
		LEFT & RIGHT	358 x 231	958 x 231	912 x 231	912 x 231	912 x 231	958 x 231	456 x 231 (2off)
MAXIMUM ENTRY GUIDE (Metric Glands)									
		TOP & BOTTOM							
	M16		161	156	74	161	189	217	259
	M20		114	76	52	114	132	156	186
	M25		56	76	29	56	64	76	92
	M32		48	68	18	48	56	68	80
	M40		33	45	15	33	36	45	51
	M50		27	39	10	27	33	39	45
	M63		14	20	6	14	16	20	24
		LEFT / RIGHT							
	M16		77	156	210	210	210	217	259
	M20		54	76	144	144	144	156	186
	M25		28	76	72	72	72	76	92
	M32		24	68	64	64	64	68	80
	M40		15	45	42	42	42	45	51
	M50		12	39	36	36	36	39	45
	M63		6	20	18	18	18	20	24
TERMINAL CONTENT									
Terminal Conductor Size		Orientation							
2.5 mm <sup>2</sup>		Vertical	10 x 172 0	10 x 172 0	10 x 211 0	8 x 211 0	9 x 211 0	10 x 211	13 x 211
4 mm <sup>2</sup>		Vertical	9 x 144 0	9 x 144 0	9 x 177 0	7 x 177 0	9 x 177 0	9 x 177	12 x 177
6 mm <sup>2</sup>		Vertical	9 x 111 0	9 x 111 0	9 x 136 0	7 x 136 0	8 x 136 0	9 x 136	11 x 136
10 mm <sup>2</sup>		Vertical	8 x 88 0	8 x 88 0	8 x 109 0	6 x 109 0	7 x 109 0	8 x 109	10 x 109
16 mm <sup>2</sup>		Vertical	7 x 73	7 x 73	7 x 90	6 x 90	6 x 90	7 x 90	9 x 90

- Notes:
1. The information provided is based on the physical constraints of the enclosure. Please refer to the certificate for hazardous area applications.
  2. This information is for guidance purposes only. Cooper Crouse-Hinds UK Ltd reserves the right to make any necessary changes without notice



# Ex - Cell STEEL ENCLOSURES

**COOPER** Crouse-Hinds



**WWW.CABLEJOINTS.CO.UK**  
**THORNE & DERRICK UK**  
TEL 0044 191 490 1547 FAX 0044 477 5371  
TEL 0044 117 977 4647 FAX 0044 977 5582  
**WWW.THORNEANDDERRICK.CO.UK**

REV 0907

# Ex-Cell "FLEX" CONTROL STATION SOLUTIONS

**COOPER** Crouse-Hinds

The Ex-Cell "Flex" Control Solutions provide a highly flexible platform allowing the assembly of fully customised ATEX certified Ex de solutions for Category 2 applications.

A comprehensive range of panel mounted indicators and operator devices are available of assembly in the Ex-Cell enclosures product line.



These devices include:

- Visual signal indicators available in a wide range of voltage ratings and with interchangeable coloured lenses.
- Pushbuttons including both single and double with many contact combinations for a multitude of switching configurations.
- Multi position low power control switches with key operated options
- Multi position high power mains switches.
- Manual motor starter.
- Key operated options for the above.
- Potentiometers and analogue measurement devices are available to complete the range of products that can be assembled.
- In addition to the panel mounted indicator and control components there is a wide range of din-rail mounted protection devices available such as mains circuit breakers (MCB), with an RCD option, fuses, thermal over current relays, current impulse switches and over voltage arrestors.



**Panel Mounted Components  
Control and Indication**



Enclosure / terminal assemblies configured to meet clients specification.



**WWW.CABLEJOINTS.CO.UK**  
**THORNE & DERRICK UK**  
TEL 0044 191 490 1547 FAX 0044 477 5371  
TEL 0044 117 977 4647 FAX 0044 977 5582  
**WWW.THORNEANDDERRICK.CO.UK**

# **NXT STEEL ENCLOSURES**

 **COOPER Crouse-Hinds**

## HIGH INTEGRITY ENCLOSURE / TERMINATION SOLUTIONS

The **NXT** range is an **ATEX** certified steel and stainless steel junction box solution fully compliant with the impact, UV, thermal and ingress protection requirements for hazardous locations.

Available in a wide range of sizes to meet a diverse range of applications. Ideal for electrical and instrumentation applications.

Using the highest quality materials, design benefits and precision manufacturing the **NXT** range is the benchmark for quality and performance in steel enclosures.

The standard depth's of 160 and 205 can also be extended to 300mm deep – available upon request.

The Stainless Steel versions are suitable for salt laden atmospheres and harsh environmental conditions.



- One piece gasket
- Retained lid fixing screws



- Integral drainage channel



- internal / external earth stud



- Heavy-duty welded mounting lugs

- **Material:**
- **Material Thickness:**
- **Finish:**
- **Gasket Material:**

### Door Fastening:

- **Enclosure Mounting:**
- **Equipment Mountings:**
- **Enclosure Earth:**
- **Ingress Protection Rating:**
- **Temperature Range:**
- **Impact Resistance:**
- **Certification:**

Stainless Steel grades: standard is 316L (1.4401) & 304 on request (1.4301) or Sheet Steel. Body – 1.5mm, Door - 1.5mm (up to 500 x 350), 2.0mm for larger sizes (620 x 450 to 980 x 740). Stainless Steel: Electro-chemical polish. Sheet Steel: Powder polyester Grey RAL 7032.

**Option:** Silicon closed cell sponge available for lid and gland plate sealing.

Lift off hinged door with 180° opening, all stainless steel and captive hex fastening screws.

4 x external 3mm thick welded lugs, 11mm Ø holes / slots.

4 x stand off pillars Ø 9mm, 25mm high, tapped M6 x10.

M10 external / internal brass earth stud assembly. M6 internal stud on door & painted gland plates.

IP66

**Standard:** -45°C to +80°C (Neoprene gasket material) **Option:** -65°C to +135°C (Silicon)

7 J (Nm)

**Component certified:** II 2 GD EEx e II - ATEX (KEMA99ATEX3174U) & IECEx (Pending)

Industrial Control Panel cULus to UL50 / c22.2 no. 94-m91, types 3S, 4, 4X. GOST-R & Germanischer Lloyd

NOTE: empty enclosure is component certified – for custom assembly service and apparatus certification please contact your local sales representative



Typical NXT assembled and certified for Hazardous Areas (ATEX and IECEx)



Gland entries and assembly services available – contact us for options and customisation services



**WWW.CABLEJOINTS.CO.UK**  
**THORNE & DERRICK UK**  
TEL 0044 191 490 1547 FAX 0044 477 5371  
TEL 0044 117 977 4647 FAX 0044 977 5582  
**WWW.THORNEANDDERRICK.CO.UK**

REV 0907

**TECHNICAL DATA SHEET**

**NXT Range Enclosure**

**METRIC (160 deep)**

CCH REFERENCE		NXT 221513	NXT 262616	NXT 303016	NXT 382616	NXT 453816
<b>DIMENSIONS - HEIGHT x WIDTH x DEPTH (mm)</b> (Nominal Imperial Size Conversion)		229 x 152 x 130 (9" x 6" x 5.1")	260 x 260 x 160 (10.2" x 10.2" x 6.3")	306 x 306 x 160 (12" x 12" x 6.3")	380 x 260 x 160 (15" x 10.2" x 6.3")	458 x 382 x 160 (18" x 15" x 6.3")
<b>EXTERNAL FIXING CENTRES (mm)</b> FOR 3 & 4 GLAND PLATE VERSION FOR 0, 1 & 2 GLAND PLATE VERSION	Vertical	152	170	208	250	305
	Horizontal	208	316	361	316	437
	Horizontal	178	316	331	316	407
<b>MATERIAL THICKNESS (mm)</b>	BODY	1.5	1.5	1.5	1.5	1.5
	DOOR	1.5	1.5	1.5	1.5	1.5
<b>WEIGHT (empty)</b>	kg	4.00	6.00	7.00	8.00	10.00
<b>INTERNAL MOUNTING</b>						
<b>RAIL FIXING CENTRES (mm)</b>	Vertical	129	160	206	280	358
	Horizontal	52	160	206	180	282
<b>RAIL LENGTH (mm)</b>	Vertical	149	180	226	300	378
	Horizontal	72	180	226	200	302
<b>AVAILABLE GLANDING AREA (mm)</b> (with Gland Plates FITTED)						
TOP & BOTTOM		58 x 108	214 x 80	261 x 80	214 x 80	337 x 80
LEFT		58 x 108	114 x 80	214 x 80	214 x 80	337 x 80
RIGHT		58 x 108	114 x 80	261 x 80	214 x 80	337 x 80
<b>MAXIMUM ENTRY GUIDE (Metric Glands)</b> (based on BRASS GLANDS)		TOP / BOTTOM	TOP / BOTTOM	TOP / BOTTOM	TOP / BOTTOM	TOP / BOTTOM
M16		6 / 6	14 / 14	18 / 18	14 / 14	27 / 27
M20		2 / 2	10 / 10	14 / 14	10 / 10	18 / 18
M25		2 / 2	4 / 4	5 / 5	4 / 4	7 / 7
TOP / BOTTOM		M32	1 / 1	3 / 3	3 / 3	6 / 6
		M40	0 / 0	3 / 3	3 / 3	5 / 5
		M50	0 / 0	3 / 3	2 / 2	4 / 4
		M63	0 / 0	0 / 0	0 / 0	0 / 0
LEFT / RIGHT		M16	6 / 6	8 / 8	14 / 14	27 / 27
		M20	2 / 2	6 / 6	10 / 10	18 / 18
		M25	2 / 2	2 / 2	4 / 4	7 / 7
		M32	1 / 1	2 / 2	3 / 3	6 / 6
		M40	0 / 0	1 / 1	3 / 3	5 / 5
		M50	0 / 0	1 / 1	2 / 2	4 / 4
		M63	0 / 0	0 / 0	0 / 0	0 / 0
<b>TERMINAL CONTENT</b>						
Terminal conductor size	Orientation					
2.5 mm <sup>2</sup>	Vertical	1 x 21	2 x 27	2 x 36	2 x 50	3 x 66
4 mm <sup>2</sup>	Vertical	1 x 17	2 x 22	2 x 30	2 x 42	3 x 55
6 mm <sup>2</sup>	Vertical	1 x 13	1 x 17	2 x 23	1 x 32	3 x 42
10 mm <sup>2</sup>	Vertical	1 x 11	1 x 14	2 x 18	1 x 26	3 x 34
16 mm <sup>2</sup>	Vertical	1 x 9	1 x 11	2 x 15	1 x 21	2 x 28

- NOTES : -
- The information provided is based on the physical constraints of the enclosure. Please refer to the certificate for hazardous area applications.
  - This information is for guidance purposes only. Cooper Crouse-Hinds UK Ltd reserves the right to make any necessary changes without notice

CCH REFERENCE		NXT 262620	NXT 303020	NXT 382620	NXT 453820	NXT 484820	NXT 503520
<b>DIMENSIONS - HEIGHT x WIDTH x DEPTH (mm)</b> (Nominal Imperial Size Conversion)		<b>260 x 260 x 205</b> (10.2" x 10.2" x 8.1")	<b>306 x 306 x 205</b> (12" x 12" x 8.1")	<b>380 x 260 x 205</b> (15" x 10.2" x 8.1")	<b>458 x 382 x 205</b> (18" x 15" x 8.1")	<b>480 x 480 x 205</b> (18.9" x 18.9" x 8.1")	<b>500 x 350 x 205</b> (19.7" x 13.8" x 8.1")
<b>EXTERNAL FIXING CENTRES (mm)</b> FOR 3 & 4 GLAND PLATE VERSION FOR 0, 1 & 2 GLAND PLATE VERSION	Vertical	170	208	250	305	327	350
	Horizontal	316	361	316	437	535	406
	Horizontal	316	331	316	407	505	406
<b>MATERIAL THICKNESS (mm)</b>	BODY	1.5	1.5	1.5	1.5	1.5	1.5
	DOOR	1.5	1.5	1.5	1.5	1.5	1.5
<b>WEIGHT (empty)</b>	kg	6.60	7.70	8.80	11.0	11.00	10.50
<b>INTERNAL MOUNTING</b>							
<b>RAIL FIXING CENTRES (mm)</b>	Vertical	160	206	280	358	380	400
	Horizontal	160	206	180	282	380	260
<b>RAIL LENGTH (mm)</b>	Vertical	180	226	300	378	400	420
	Horizontal	180	226	200	302	400	280
<b>AVAILABLE GLANDING AREA (mm)</b> (with Gland Plates FITTED)							
TOP & BOTTOM		214 x 124	261 x 124	214 x 124	337 x 124	404 x 124	304 x 124
LEFT		114 x 124	214 x 124	214 x 124	337 x 124	337 x 124	304 x 124
RIGHT		114 x 124	261 x 124	214 x 124	337 x 124	404 x 124	304 x 124
<b>MAXIMUM ENTRY GUIDE (Metric Glands)</b> (based on BRASS GLANDS)							
TOP / BOTTOM							
	M16	28 / 28	36 / 36	28 / 28	48 / 48	56 / 56	40 / 40
	M20	15 / 15	21 / 21	15 / 15	27 / 27	30 / 30	24 / 24
	M25	8 / 8	10 / 10	8 / 8	14 / 14	18 / 18	12 / 12
	M32	6 / 6	8 / 8	6 / 6	12 / 12	14 / 14	10 / 10
	M40	3 / 3	3 / 3	3 / 3	5 / 5	11 / 11	4 / 4
	M50	2 / 2	3 / 3	2 / 2	4 / 4	5 / 5	3 / 3
	M63	2 / 2	2 / 2	2 / 2	3 / 3	4 / 4	3 / 3
LEFT / RIGHT							
	M16	16 / 16	28 / 36	28 / 28	48 / 48	48 / 56	40 / 40
	M20	9 / 9	15 / 21	15 / 15	27 / 27	27 / 30	24 / 24
	M25	4 / 4	8 / 10	8 / 8	14 / 14	14 / 18	12 / 12
	M32	4 / 4	6 / 8	6 / 6	12 / 12	12 / 14	10 / 10
	M40	1 / 1	3 / 3	3 / 3	5 / 5	5 / 11	4 / 4
	M50	1 / 1	2 / 3	2 / 2	4 / 4	4 / 5	3 / 3
	M63	1 / 1	2 / 2	2 / 2	3 / 3	3 / 4	3 / 3
<b>TERMINAL CONTENT</b>							
Terminal conductor size	Orientation						
2.5 mm <sup>2</sup>	Vertical	2 x 27	3 x 36	2 x 50	3 x 66	4 x 70	3 x 74
4 mm <sup>2</sup>	Vertical	2 x 22	2 x 30	2 x 42	3 x 55	4 x 59	2 x 62
6 mm <sup>2</sup>	Vertical	2 x 17	2 x 23	1 x 32	3 x 42	4 x 45	2 x 48
10 mm <sup>2</sup>	Vertical	2 x 14	2 x 18	1 x 26	2 x 34	3 x 36	2 x 38
16 mm <sup>2</sup>	Vertical	2 x 11	2 x 15	1 x 21	2 x 28	3 x 30	2 x 31

NOTES :-

- The information provided is based on the physical constraints of the enclosure. Please refer to the certificate for hazardous area applications.
- This information is for guidance purposes only. Cooper Crouse-Hinds UK Ltd reserves the right to make any necessary changes without notice

CCH REFERENCE		NXT 624520	NXT 745520	NXT 765020	NXT 866420	NTX916120	NXT 987420
<b>DIMENSIONS - HEIGHT x WIDTH x DEPTH (mm)</b> (Nominal Imperial Size Conversion)		<b>620 x 450 x 205</b> (24.4" x 17.7" x 8.1")	<b>740 x 550 x 205</b> (29.1" x 21.7" x 8.1")	<b>762 x 508 x 205</b> (30" x 20" x 8.1")	<b>860 x 640 x 205</b> (33.9" x 25.2" x 8.1")	<b>914 x 610 x 205</b> (36" x 24" x 8.1")	<b>980 x 740 x 205</b> (38.6" x 29.1" x 8.1")
<b>EXTERNAL FIXING CENTRES (mm)</b> FOR 3 & 4 GLAND PLATE VERSION FOR 0, 1 & 2 GLAND PLATE VERSION	Vertical	450	540	508	570	559	700
	Horizontal	506	606	564	696	666	796
	Horizontal	506	606	534	696	636	796
<b>MATERIAL THICKNESS (mm)</b>	BODY	2.0	2.0	2.0	2.0	2.0	2.0
	DOOR	2.0	2.0	2.0	2.0	2.0	2.0
<b>WEIGHT (empty)</b>	kg	18.00	24.00	24.00	31.00	31.00	39.00
<b>INTERNAL MOUNTING</b>							
<b>RAIL FIXING CENTRES (mm)</b>	Vertical	520	640	662	760	814	880
	Horizontal	350	450	408	540	510	640
<b>RAIL LENGTH (mm)</b>	Vertical	540	660	682	780	834	900
	Horizontal	370	470	428	560	530	660
<b>AVAILABLE GLANDING AREA (mm)</b> (with Gland Plates FITTED)	TOP & BOTTOM	404 x 124	504 x 124	404 x 124	594 x 124	566 x 108	2 x (304 x 124)
	LEFT	404 x 124	504 x 124	594 x 124	2 x (304 x 124)	566 x 108	2 x (404 x 124)
	RIGHT	404 x 124	504 x 124	594 x 124	2 x (304 x 124)	566 x 108	2 x (404 x 124)
<b>MAXIMUM ENTRY GUIDE (Metric Glands)</b> (based on BRASS GLANDS)	TOP / BOTTOM	TOP / BOTTOM	TOP / BOTTOM	TOP / BOTTOM	TOP / BOTTOM	TOP / BOTTOM	TOP / BOTTOM
	M16	56 / 56	72 / 72	56 / 56	84 / 84	60 / 60	80 / 80
	M20	30 / 30	39 / 39	30 / 30	48 / 48	30 / 30	48 / 48
	M25	18 / 18	22 / 22	18 / 18	26 / 26	24 / 24	24 / 24
	M32	14 / 14	18 / 18	14 / 14	20 / 20	10 / 10	20 / 20
	M40	11 / 11	14 / 14	11 / 11	9 / 9	8 / 8	8 / 8
	M50	5 / 5	6 / 6	5 / 5	7 / 7	7 / 7	6 / 6
	M63	4 / 4	5 / 5	4 / 4	6 / 6	5 / 5	6 / 6
	LEFT / RIGHT	LEFT / RIGHT	LEFT / RIGHT	LEFT / RIGHT	LEFT / RIGHT	LEFT / RIGHT	LEFT / RIGHT
	M16	56 / 56	72 / 72	84 / 84	80 / 80	60 / 60	112 / 112
	M20	30 / 30	39 / 39	48 / 48	48 / 48	30 / 30	60 / 60
	M25	18 / 18	22 / 22	26 / 26	24 / 24	24 / 24	36 / 36
	M32	14 / 14	18 / 18	20 / 20	20 / 20	10 / 10	28 / 28
	M40	11 / 11	14 / 14	9 / 9	8 / 8	8 / 8	22 / 22
M50	5 / 5	6 / 6	7 / 7	6 / 6	7 / 7	10 / 10	
M63	4 / 4	5 / 5	6 / 6	6 / 6	5 / 5	8 / 8	
<b>TERMINAL CONTENT</b>							
Terminal conductor size	Orientation						
2.5 mm <sup>2</sup>	Vertical	4 x 98	5 x 121	4 x 125	6 x 145	6 x 155	7 x 168
4 mm <sup>2</sup>	Vertical	3 x 81	4 x 101	4 x 105	5 x 121	5 x 130	6 x 140
6 mm <sup>2</sup>	Vertical	3 x 63	4 x 78	4 x 81	5 x 93	5 x 100	6 x 108
10 mm <sup>2</sup>	Vertical	3 x 50	4 x 62	3 x 64	5 x 74	4 x 80	5 x 86
16 mm <sup>2</sup>	Vertical	3 x 41	3 x 51	3 x 53	4 x 61	4 x 66	5 x 71

NOTES :-

- The information provided is based on the physical constraints of the enclosure. Please refer to the certificate for hazardous area applications.
- This information is for guidance purposes only. Cooper Crouse-Hinds UK Ltd reserves the right to make any necessary changes without notice

**TECHNICAL DATA SHEET**

**NXT Range Enclosure LANDSCAPE**

**METRIC (205 deep)**

CCH REFERENCE		NXT 303520	NXT 384520	NXT 455520	NXT 506420
<b>DIMENSIONS - HEIGHT x WIDTH x DEPTH (mm)</b> (Nominal Imperial Size Conversion)		306 x 350 x 205 (12" x 13.8" x 8.1")	380 x 450 x 205 (15" x 17.7" x 8.1")	458 x 550 x 205 (18" x 21.7" x 8.1")	500 x 640 x 205 (19.7" x 25.2" x 8.1")
<b>EXTERNAL FIXING CENTRES (mm)</b> FOR 3 & 4 GLAND PLATE VERSION FOR 0, 1 & 2 GLAND PLATE VERSION	Vertical	203	250	305	330
	Horizontal	405	506	605	696
	Horizontal	405	506	605	696
<b>MATERIAL THICKNESS (mm)</b>	BODY	1.5	1.5	1.5	2.0
	DOOR	1.5	1.5	1.5	2.0
<b>WEIGHT (empty)</b>	kg	7.7	10.6	14.9	20.9
<b>INTERNAL MOUNTING</b>					
<b>RAIL FIXING CENTRES (mm)</b>	Vertical	206	160	358	400
	Horizontal	250	160	450	540
<b>RAIL LENGTH (mm)</b>	Vertical	226	180	378	420
	Horizontal	270	180	470	560
<b>AVAILABLE GLANDING AREA (mm)</b> (with Gland Plates FITTED)					
TOP & BOTTOM		304 x 124	404 x 124	504 x 124	594 x 124
LEFT		214 x 124	214 x 124	337 x 124	404 x 124
RIGHT		258 x 124	214 x 124	337 x 124	404 x 124
<b>MAXIMUM ENTRY GUIDE (Metric Glands)</b> (based on BRASS GLANDS)		TOP / BOTTOM	TOP / BOTTOM	TOP / BOTTOM	TOP / BOTTOM
M16		40 / 40	56 / 56	72 / 72	84 / 84
M20		24 / 24	30 / 30	39 / 39	48 / 48
M25		12 / 12	18 / 18	22 / 22	26 / 26
TOP / BOTTOM M32		10 / 10	14 / 14	18 / 18	20 / 20
M40		4 / 4	11 / 11	14 / 14	9 / 9
M50		3 / 3	5 / 5	6 / 6	7 / 7
M63		3 / 3	4 / 4	5 / 5	6 / 6
LEFT / RIGHT		LEFT / RIGHT	LEFT / RIGHT	LEFT / RIGHT	LEFT / RIGHT
M16		28 / 36	28 / 28	48 / 48	56 / 56
M20		15 / 21	15 / 15	27 / 27	30 / 30
M25		8 / 10	8 / 8	14 / 14	18 / 18
M32		6 / 8	6 / 6	12 / 12	14 / 14
M40		3 / 3	3 / 3	5 / 5	11 / 11
M50		2 / 3	2 / 2	4 / 4	5 / 5
M63		2 / 2	2 / 2	3 / 3	4 / 4
<b>TERMINAL CONTENT</b>					
Terminal conductor size	Orientation				
2.5 mm <sup>2</sup>	Vertical	3 x 36	4 x 50	5 x 66	6 x 74
4 mm <sup>2</sup>	Vertical	2 x 30	3 x 42	4 x 55	5 x 62
6 mm <sup>2</sup>	Vertical	2 x 23	3 x 32	4 x 42	5 x 48
10 mm <sup>2</sup>	Vertical	2 x 18	3 x 26	4 x 34	5 x 38
16 mm <sup>2</sup>	Vertical	2 x 15	3 x 21	3 x 28	4 x 31

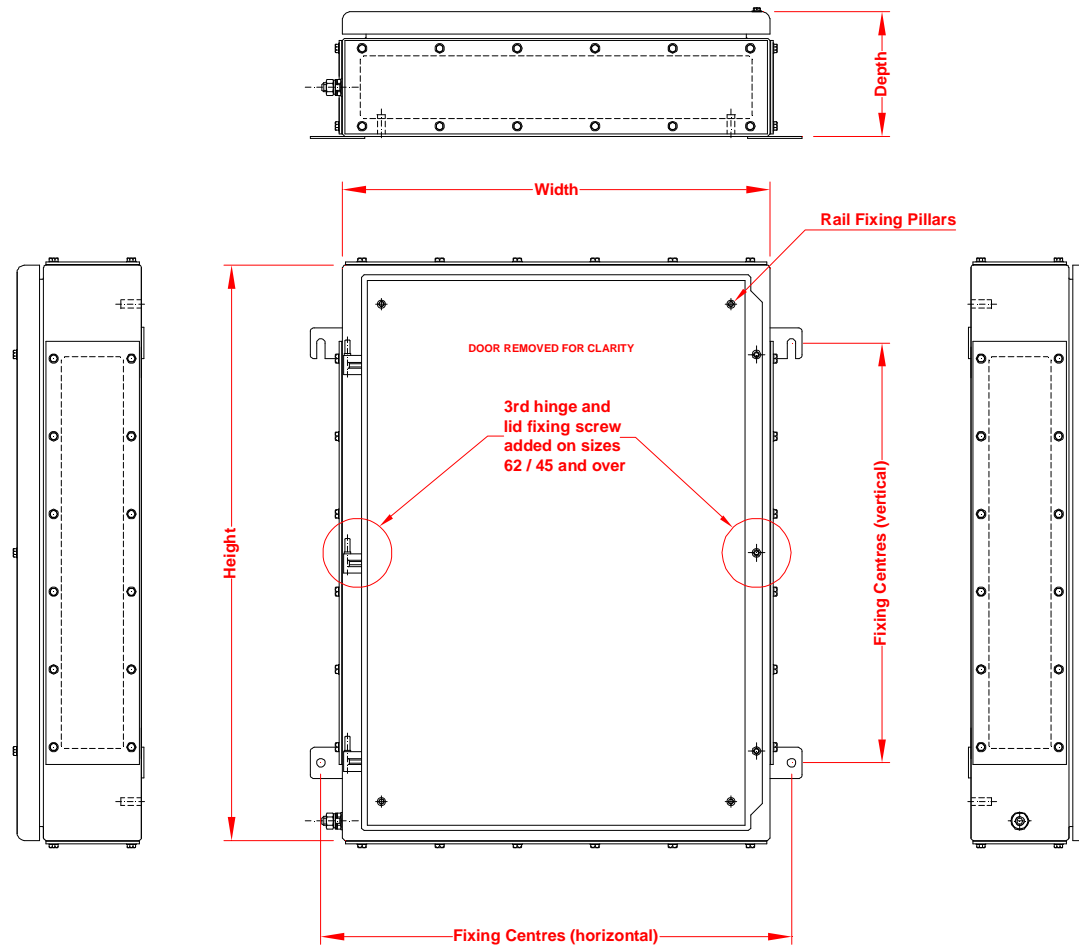
- NOTES : -
1. The information provided is based on the physical constraints of the enclosure. Please refer to the certificate for hazardous area applications.
  2. This information is for guidance purposes only. Cooper Crouse-Hinds UK Ltd reserves the right to make any necessary changes without notice



# NXT STEEL ENCLOSURES

**COOPER** Crouse-Hinds

## GENERAL ARRANGEMENT DRAWING



WWW.CABLEJOINTS.CO.UK  
**THORNE & DERRICK UK**  
TEL 0044 191 490 1547 FAX 0044 477 5371  
TEL 0044 117 977 4647 FAX 0044 977 5582  
WWW.THORNEANDDERRICK.CO.UK

REV 0907

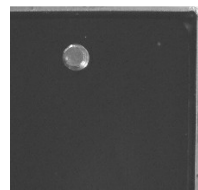
## HIGH INTEGRITY ENCLOSURE / TERMINATION SOLUTIONS

The **STB** range is an **ATEX** certified steel and stainless steel junction box solution fully compliant with the impact, UV, thermal and ingress protection requirements for hazardous locations.

Available in a wide range of sizes to meet a diverse range of applications. Ideal for electrical and instrumentation applications.

Using the highest quality materials, design benefits and precision manufacturing the **STB** range is the benchmark for quality and performance in steel enclosures.

The Stainless Steel versions are suitable for salt laden atmospheres and harsh environmental conditions.



- Single Piece gasket
- Retained Fixing Screws



- Wide Sealing Path



- internal / external earth stud



- Heavy-duty welded mounting lugs



Typical STB assembled and certified for Hazardous Areas (ATEX and IECEx)



Special Hinged Version available – contact us for options and customisation services

- **Material:** 1.5mm thick Stainless Steel grades 316L (1.4401) & 304 (1.4301) or Sheet Steel.
- **Finish:** **Stainless Steel:** Electro-chemical polish. **Sheet Steel:** Powder polyester Grey RAL 7032.
- **Gasket Material:** Neoprene closed cell sponge. **Option:** Silicon closed cell sponge available for lid and gland plate sealing.
- **Lid Fastening:** 4 x M6 captive stainless steel slotted hex head captive screws.
- **Enclosure Mounting:** STB 121208 to 252512: 2 x external 3mm thick welded lugs, 8mm holes.  
STB 163812 to 254013: 4 x external 3mm thick welded lugs, 8mm holes.  
STB 383822 to 604022: 4 x external 3mm thick welded lugs, 11mm holes / slots.
- **Equipment Mountings:** STB 121208 to 254013: C profile rail (TAS 20) **NEW: M5 sliding fixing nut kit included as standard**  
STB 383822 to 604022: 4 x stand off pillars Ø 9mm, 25mm high, tapped M6 x 10.
- **Enclosure Earth:** STB 121208 to 254013: M6 external / internal brass earth stud assembly.  
STB 383822 to 604022: M10 internal / external brass earth stud assembly.
- **Ingress Protection Rating:** IP66
- **Temperature Range:** Neoprene gasket: -45°C to +80°C, **Option:** Silicon gasket -65°C to +135°C.
- **Impact Resistance:** 7 J (Nm)
- **Certification:** **ATEX** Component certified: II 2 GD EEx e II (KEMA 99ATEX7895 U)  
Industrial Control Panel UL cULus to UL50 / c22.2 no. 94-m91, types 3S, 4, 4X GOST-R

**NOTE:** empty enclosure is component certified – for custom assembly service and apparatus certification please contact your local sales representative



**WWW.CABLEJOINTS.CO.UK**  
**THORNE & DERRICK UK**  
**TEL 0044 191 490 1547 FAX 0044 477 5371**  
**TEL 0044 117 977 4647 FAX 0044 977 5582**  
**WWW.THORNEANDDERRICK.CO.UK**

CCH REFERENCE		STB 121208 STB1 120 x 120 x 80 (4.7" x 4.7" x 3.1")	STB 151280 STB 1.1 150 x 120 x 80 (5.9" x 4.7" x 3.1")	STB 151509 STB 2 150 x 150 x 90 (5.9" x 5.9" x 3.5")	STB 191509 STB 2.1 190 x 150 x 90 (7.5" x 5.9" x 3.5")	STB 191910 STB 3 190 x 190 x 100 (7.5" x 7.5" x 3.9")	STB 252512 STB 4 250 x 250 x 120 (9.8" x 9.8" x 4.7")	
DIMENSIONS OVERALL (HEIGHT x WIDTH x DEPTH mm) (Nominal Imperial Conversion)								
EXTERNAL FIXING CENTERS (mm)	Vertical	-	-	-	-	-	-	
	Horizontal	145	175	175	215	215	275	
MATERIAL THICKNESS (mm)	BODY & LID	1.5	1.5	1.5	1.5	1.5	1.5	
WEIGHT (empty)	kg	1.40	1.60	1.90	2.30	3.00	3.70	
RAIL FIXING CENTERS (mm)	Vertical	-	-	-	-	-	-	
	Horizontal	-	-	-	-	-	-	
RAIL LENGTH (mm)	Vertical	80	110	90	150	150	-	
	Horizontal	-	-	-	-	-	210	
AVAILABLE GLANDING AREA (mm)	TOP & BOTTOM	114 x 60	114 x 60	144 x 70	144 x 70	184 x 80	244 x 100	
	LEFT	114 x 60	144 x 60	144 x 70	184 x 70	184 x 80	244 x 100	
	RIGHT	75 x 60	105 x 60	105 x 73	145 x 70	145 x 83	205 x 100	
MAXIMUM ENTRY GUIDE (Metric Glands)		TOP / BOTTOM	TOP / BOTTOM	TOP / BOTTOM	TOP / BOTTOM	TOP / BOTTOM	TOP / BOTTOM	
		M16	5 / 5	6 / 5	8 / 8	9 / 8	13 / 12	24 / 23
		M20	3 / 2	3 / 2	5 / 4	5 / 4	7 / 8	12 / 13
		M25	2 / 2	2 / 2	2 / 2	3 / 3	5 / 4	10 / 9
	TOP & BOTTOM	M32	1 / 1	1 / 1	1 / 1	2 / 2	3 / 3	5 / 5
		M40	- / -	- / -	- / -	2 / 1	2 / 2	3 / 3
		M50	- / -	- / -	- / -	- / -	2 / 1	3 / 2
		M63	- / -	- / -	- / -	- / -	- / -	2 / 2
		LEFT / RIGHT	LEFT / RIGHT	LEFT / RIGHT	LEFT / RIGHT	LEFT / RIGHT	LEFT / RIGHT	LEFT / RIGHT
		M16	6 / 4	7 / 5	8 / 6	8 / 6	14 / 9	24 / 18
		M20	3 / 2	4 / 3	5 / 3	5 / 3	8 / 6	13 / 10
	LEFT / RIGHT	M25	2 / 1	3 / 2	2 / 1	2 / 1	5 / 4	10 / 8
		M32	2 / 1	2 / 1	2 / 1	2 / 1	3 / 2	5 / 4
		M40	- / -	- / -	- / -	- / -	2 / 2	3 / 3
	M50	- / -	- / -	- / -	- / -	2 / 1	3 / 2	
	M63	- / -	- / -	- / -	- / -	- / -	2 / 2	
TERMINAL CONTENT								
Terminal conductor size	Orientation							
2.5 mm <sup>2</sup>	Vertical	1 x 8	1 x 13	1 x 13	1 x 21	1 x 21	2 x 31	
4 mm <sup>2</sup>	Vertical	1 x 6	1 x 11	1 x 11	1 x 18	1 x 18	2 x 26	
6 mm <sup>2</sup>	Vertical	1 x 5	1 x 8	1 x 8	1 x 13	1 x 13	2 x 19	
10 mm <sup>2</sup>	Vertical	1 x 4	1 x 7	1 x 7	1 x 10	1 x 10	2 x 15	

NOTES :-

- The information provided is based on the physical constraints of the enclosure. Please refer to the certificate for hazardous area applications.
- This information is for guidance purposes only. Cooper Crouse-Hinds UK Ltd reserves the right to make any necessary changes without notice

CCH REFERENCE		STB 163812 STB 5	STB 254013 STB 6	STB 383822 STB 7	STB 406022 STB 8	STB 604022 STB 9	
DIMENSIONS OVERALL (HEIGHT x WIDTH x DEPTH mm) (Nominal Imperial Conversion)		160 x 380 x 120 (6.3" x 15" x 4.7")	250 x 400 x 130 (9.8" x 15.7" x 5.1")	380 x 380 x 220 (15" x 15" x 8.7")	400 x 600 x 220 (15.7" x 23.6" x 8.7")	600 x 400 x 220 (23.6" x 15.7" x 8.7")	
EXTERNAL FIXING CENTERS (mm)	Vertical	80	150	250	264	464	
	Horizontal	405	425	435	655	456	
MATERIAL THICKNESS (mm)	BODY & LID	1.5	1.5	1.5	1.5	1.5	
WEIGHT (empty)	kg	3.70	5.40	8.50	13.00	13.00	
RAIL FIXING CENTERS (mm)	Vertical	-	180	300	320	520	
	Horizontal	300	-	300	520	320	
RAIL LENGTH (mm)	Vertical	120	200	320	340	540	
	Horizontal	320	360	320	560	340	
AVAILABLE GLANDING AREA (mm)	TOP & BOTTOM	374 x 100	394 x 110	374 x 190	594 x 190	394 x 190	
	LEFT	154 x 100	244 x 110	374 x 190	394 x 190	594 x 190	
	RIGHT	115 x 100	205 x 110	345 x 190	365 x 190	565 x 190	
MAXIMUM ENTRY GUIDE (Metric Glands)		TOP / BOTTOM	TOP / BOTTOM	TOP / BOTTOM	TOP / BOTTOM	TOP / BOTTOM	
		M16	36 / 35	48 / 47	78 / 78	126 / 126	84 / 84
		M20	21 / 21	27 / 27	50 / 50	80 / 80	50 / 50
		M25	16 / 15	16 / 16	32 / 32	52 / 52	32 / 32
	TOP & BOTTOM	M32	9 / 9	11 / 11	18 / 18	30 / 30	21 / 21
		M40	6 / 5	7 / 6	10 / 10	18 / 18	12 / 12
		M50	4 / 4	5 / 5	8 / 8	14 / 14	10 / 10
		M63	3 / 3	4 / 3	6 / 6	12 / 12	8 / 8
			LEFT / RIGHT	LEFT / RIGHT	LEFT / RIGHT	LEFT / RIGHT	LEFT / RIGHT
		M16	15 / 9	30 / 24	78 / 72	84 / 78	126 / 120
		M20	7 / 5	17 / 14	50 / 45	50 / 45	80 / 75
	LEFT / RIGHT	M25	6 / 4	10 / 8	32 / 28	32 / 32	52 / 48
		M32	3 / 2	7 / 6	18 / 18	21 / 18	30 / 30
		M40	2 / 1	4 / 3	10 / 10	12 / 10	18 / 16
	M50	1 / 1	3 / 2	8 / 8	10 / 8	14 / 14	
	M63	1 / 1	2 / 2	6 / 6	8 / 6	12 / 10	
TERMINAL CONTENT							
Terminal conductor size	Orientation						
2.5 mm <sup>2</sup>	Vertical	1 x 55 (Horiz. Row)	3 x 31	3 x 42	3 x 46	5 x 79	
4 mm <sup>2</sup>	Vertical	1 x 46 (Horiz. Row)	3 x 26	3 x 39	3 x 42	5 x 73	
6 mm <sup>2</sup>	Vertical	1 x 34 (Horiz. Row)	3 x 19	3 x 32	3 x 34	5 x 59	
10 mm <sup>2</sup>	Vertical	1 x 28 (Horiz. Row)	3 x 15	3 x 25	3 x 27	5 x 47	

NOTES :-

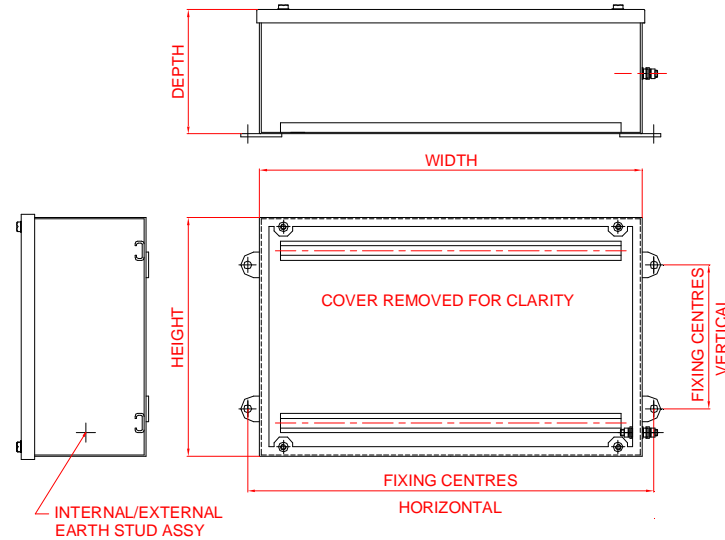
- The information provided is based on the physical constraints of the enclosure. Please refer to the certificate for hazardous area applications.
- This information is for guidance purposes only. Cooper Crouse-Hinds UK Ltd reserves the right to make any necessary changes without notice.



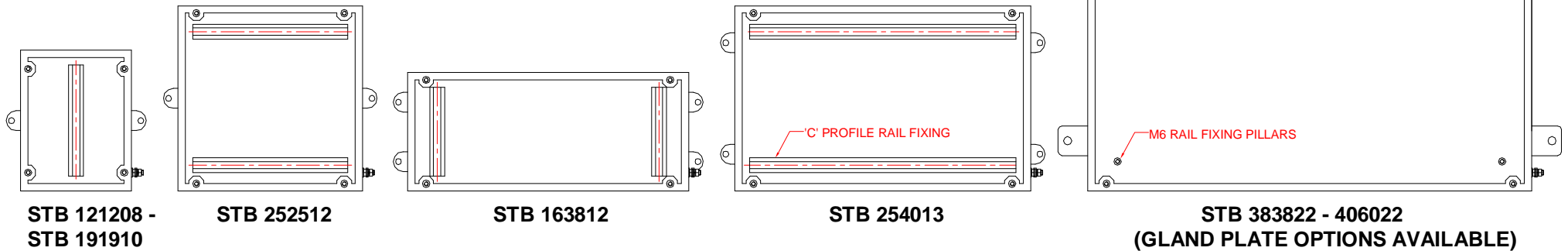
# STB STEEL ENCLOSURES

**COOPER** Crouse-Hinds

## GENERAL ARRANGEMENT DRAWING



## FIXING LUG / RAIL / PILLAR CONFIGURATION



WWW.CABLEJOINTS.CO.UK  
**THORNE & DERRICK UK**  
 TEL 0044 191 490 1547 FAX 0044 477 5371  
 TEL 0044 117 977 4647 FAX 0044 977 5582  
 WWW.THORNEANDDERRICK.CO.UK



# HVB STEEL ENCLOSURES

**COOPER** Crouse-Hinds

## HIGH INTEGRITY ENCLOSURE / TERMINATION SOLUTIONS

The **HVB** range is an **ATEX** certified steel and stainless steel heavy-duty high voltage termination enclosure solution fully compliant with the impact, UV, thermal and ingress protection requirements for hazardous locations.

**HVB** is available in three different sizes with two termination versions for either three or four pole connectivity according to the electrical requirements of the application..

Using the highest quality materials, design benefits and precision manufacturing the **HVB** range is the benchmark for quality and performance in steel enclosures.

The Stainless Steel versions are suitable for salt laden atmospheres and harsh environmental conditions.



Typical HVB assembled and certified for Hazardous Areas



- One piece gasket
- Retained lid fixing screws



- Controlled gasket compression



- internal / external earth stud



- Heavy-duty welded mounting lugs

• **Material:**

• **Material Thickness:**

• **Finish:**

• **Gasket Material:**

**Door Fastening:**

• **Enclosure Mounting:**

• **Terminations:**

• **Voltage Ratings:**

• **Enclosure Earth:**

• **Ingress Protection Rating:**

• **Temperature Range:**

• **Impact Resistance:**

• **Certification:**

Stainless Steel grades: standard is 316L (1.4401) & 304 on request (1.4301) or Sheet Steel.

Body – 1.5mm, Door - 1.5mm (HBV 463820), 2.0mm for larger sizes (HVB 756120 & 916120).

**Stainless Steel:** Electro-chemical polish. **Sheet Steel:** Powder polyester Grey RAL 7032.

Neoprene closed cell sponge.

Lift off hinged door with 180° opening, all stainless steel and captive hex fastening screws.

4 x external 3mm thick welded lugs, 11mm Ø holes / slots.

3 or 4 pole assemblies suitable for up to 30mm wide cable lugs and M12 lug fixings.

6.6kV at 50Hz. AC, 3 phase (earthed or unearthed supply systems)

M10 external / internal brass earth stud assembly. M14 for 150mm².

IP66

-20°C to +40°C

7 J (Nm)

II 2 G EEx e II **T6, T5 or T4** ATEX (Baseefa03ATEX0052X) EEx'e' II T4 200A, T5 180A, T6 160A

UL50/C22.2 No.94-M91 mild steel: types 3S, 4; stainless steel: type 4X.

NOTE: for custom assembly service and apparatus certification please contact your local sales representative



Gland entries and assembly services available – contact us for options and customisation services



[WWW.CABLEJOINTS.CO.UK](http://WWW.CABLEJOINTS.CO.UK)

**THORNE & DERRICK UK**

TEL 0044 191 490 1547 FAX 0044 477 5371

TEL 0044 117 977 4647 FAX 0044 977 5582

[WWW.THORNEANDDERRICK.CO.UK](http://WWW.THORNEANDDERRICK.CO.UK)

REV 0908

**TECHNICAL DATA SHEET**

**HVB ENCLOSURE**

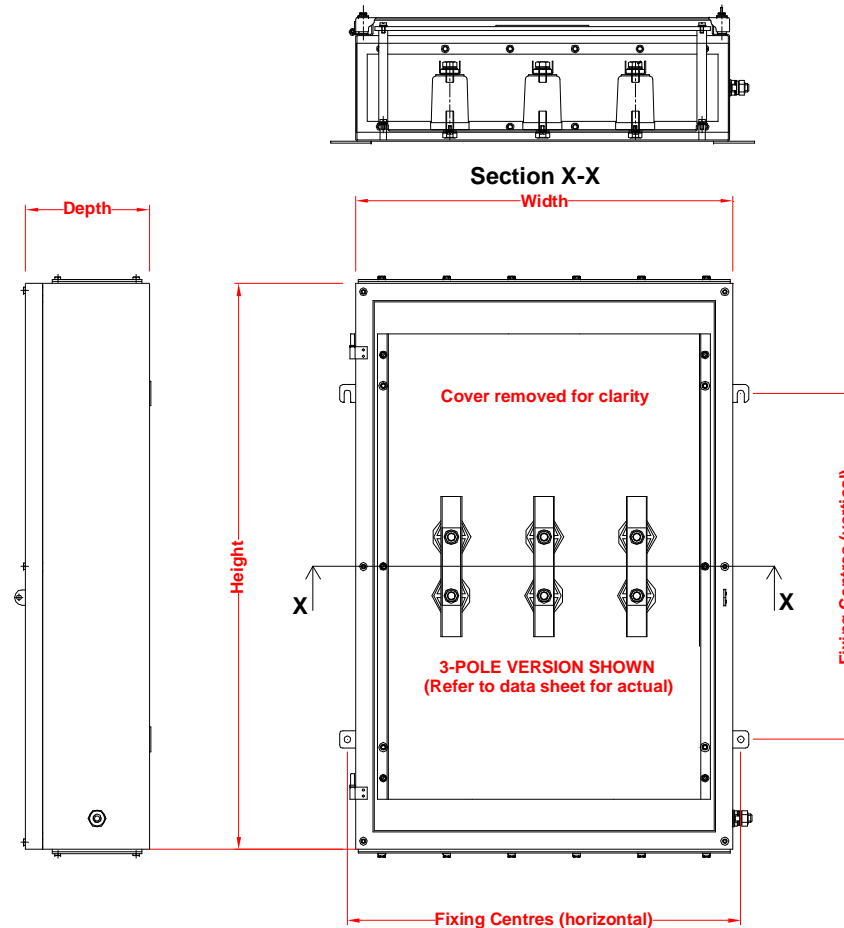
CCH PART REFERENCE		HVB463820 (3-pole)	HVB765120 (3-pole)	HVB916120 (3-pole)	HVB916120 (4-pole)	
DIMENSIONS OVERALL (HEIGHT x WIDTH x DEPTH mm) (Nominal Imperial Size Conversion)		458 x 382 x 200 (18" x 15" x 7.9")	762 x 508 x 200 (30" x 20" x 7.9")	914 x 610 x 200 (36" x 24" x 7.9")	914 x 610 x 200 (36" x 24" x 7.9")	
EXTERNAL FIXING CENTRES (mm)	Vertical	305	508	559	559	
	Horizontal	407	534	534	636	
MATERIAL THICKNESS	BODY	1.5	2.0	2.0	2.0	
	LID	1.5	2.0	2.0	2.0	
WEIGHT (EMPTY ENCLOSURE)	kg	23.75	37.00	45.00	47.00	
MAXIMUM RATINGS	VOLTAGE (kV)	6.6	6.6	6.6	6.6	
	CURRENT (A)	T4	200	200	200	200
		T5	180	180	180	180
		T6	160	160	160	160
Ratings based on an ambient temperature of 40°C						
MAXIMUM CABLE SIZE						
Maximum lug width	mm	30	30	30	30	
Maximum cable size	sq.mm	150	150	150	150	
	kcmil (MCM)	300	300	300	300	
MAXIMUM WIRING SPACE						
(Distance between entries)	mm	180	335	410	410	
AVAILABLE GLANDING AREA	TOP & BOTTOM	337 x 108	464 x 108	566 x 108	566 x 108	
MAXIMUM No. of ENTRIES TOP & BOTTOM	M40	6	8	8	8	
	M50	4	6	7	7	
	M63	3	4	5	5	
	M75	3	4	4	4	
CURRENT RATINGS						
The ratings below relate to all four HVB sizes						
Cable Size (sq.mm)		Current (A)				
		T6	T5	T4		
16		47	68	75		
25		62	89	98		
35		75	110	122		
50		89	133	147		
70		160	180	200		
Cable Size (AWG)		Current (A)				
		T6	T5	T4		
6		42	59	65		
4		55	80	88		
3		64	92	102		
2		73	107	118		
1		81	121	134		
1/0		101	141	156		
2/0		150	173	192		
3/0		160	180	200		



# HVB STEEL ENCLOSURES

**COOPER** Crouse-Hinds

## GENERAL ARRANGEMENT DRAWING



[WWW.CABLEJOINTS.CO.UK](http://WWW.CABLEJOINTS.CO.UK)  
**THORNE & DERRICK UK**  
TEL 0044 191 490 1547 FAX 0044 477 5371  
TEL 0044 117 977 4647 FAX 0044 977 5582  
[WWW.THORNEANDDERRICK.CO.UK](http://WWW.THORNEANDDERRICK.CO.UK)

REV 0908

# QBX STEEL ENCLOSURES

**COOPER** Crouse-Hinds

## HIGH INTEGRITY ENCLOSURE / TERMINATION SOLUTIONS

The **QBX** range is a “UL certified” Industrial Control Panel enclosure available in various options of materials and finishes and is available in a comprehensive range of sizes suitable for a wide range of applications, both electrical and mechanical.

Unlike many industrial enclosures the **Cooper Crouse-Hinds QBX** is UL 4X certified that provides optimum environmental performance and protection. The **QBX** has an ingress protection rating of IP66 to EN50529.

Using the highest quality materials, design benefits and high quality manufacturing the **QBX** range is the benchmark in enclosures of its class.



QBX with ¼ turn double bit latch (mounting lugs not fitted)



- FIP gasket
- Excellent recovery properties



- Integral drainage channel



- internal / earth stud



- Adjustable mounting lugs

- **Material:** Stainless Steel grades 304 (1.4301) or Sheet Steel.
- **Material Thickness:** Body – 1.2mm, Door - 1.2mm.
- **Finish:** Stainless Steel: Electro-chemical polish. Sheet Steel: Powder polyester Grey RAL 7032.
- **Gasket Material:** Door – foam in place polyurethane (FIP), Gland Plate – closed cell sponge.
- **Door Fastening:** Hinged door with chrome plated die cast zinc ¼ turn latches.
- **Enclosure Mounting:** 4 x external lugs, with 8mm holes that can be mounted vertically, horizontally or diagonally, (supplied loose in bag with fixing kit).  
4 x stand off pillars Ø 9mm, 25mm high, tapped M6 x10.  
A 2mm thick Zinc coated mounting plate supplied.
- **Equipment Mountings:** **Optional** zero or bottom face gland plate on request.  
Internal M6 stud on base & door.
- **Gland Plate:** IP66
- **Enclosure Earth:** -20°C to +80°C
- **Ingress Protection Rating:** Industrial Control Panel UL cULus to UL50 / c22.2 no. 94-m91, types 3S, 4, 4X (E115376)
- **Temperature Range:**
- **Certification:**

NOTE: for custom assembly service and customization please contact your local sales representative.



**WWW.CABLEJOINTS.CO.UK**  
**THORNE & DERRICK UK**  
TEL 0044 191 490 1547 FAX 0044 477 5371  
TEL 0044 117 977 4647 FAX 0044 977 5582  
**WWW.THORNEANDDERRICK.CO.UK**

REV 0907

TECHNICAL DATE SHEET

QBX RANGE ENCLOSURE

METRIC

DIMENSIONS IN MM (HEIGHT X WIDTH X DEPTH)		300 x 200 x 120	300 x 300 x 120	400 x 300 x 120	400 x 400 x 120	500 x 400 x 120	600 x 400 x 120	
MATERIAL THICKNESS	BODY	1.2	1.2	1.2	1.2	1.2	1.2	
	LID	1.2	1.2	1.2	1.2	1.2	1.2	
WEIGHT (EMPTY ENCLOSURE)	kg	2.78	3.61	4.70	5.96	6.42	7.41	
INTERNAL MOUNTING PLATE	dimensions, h x w	255 x 155	255 x 255	355 x 255	355 x 355	455 x 355	555 x 355	
AVAILABLE GLANDING AREA	CENTRAL	160 x 60	247.5 x 60	247.5 x 60	(not central)	(not central)	(not central)	
	LEFT	(central)	(central)	(central)	160 x 60	160 x 60	160 x 60	
	RIGHT				160 x 60	160 x 60	160 x 60	
MAXIMUM ENTRY GUIDE (Metric Glands)	M16	10	16	16				
	M20	4	7	7				
	M25	3	5	5				
	BOTTOM / CENTRAL	M32	2	4	4	(not central)	(not central)	(not central)
		M40	0	0	0			
		M50	0	0	0			
		M63	0	0	0			
BOTTOM - LEFT	M16				10	10	10	
	M20				4	4	4	
	M25				3	3	3	
	M32	(central)	(central)	(central)	2	2	2	
	M40				0	0	0	
	M50				0	0	0	
	M63				0	0	0	
BOTTOM - RIGHT	M16	(central)	(central)	(central)	10	10	10	
	M20				4	4	4	
	M25				3	3	3	
	M32				2	2	2	
	M40				0	0	0	
	M50				0	0	0	
	M63				0	0	0	
Entries are based on recommended distance between centres								
TERMINAL CONTENT (No. of Terminal Rails x No. of Terminals per Rail)								
Terminal Type (thickness)	Terminal Rail Orientation							
2.5mm <sup>2</sup> (5mm)	Vert	1 x 42	2 x 42	2 x 62	3 x 62	3 x 82	3 x 102	
	Horiz	2 x 22	2 x 42	3 x 42	3 x 62	4 x 62	5 x 62	
4mm <sup>2</sup> (6mm)	Vert	1 x 35	2 x 35	2 x 51	3 x 51	3 x 68	3 x 85	
	Horiz	2 x 18	2 x 35	3 x 35	3 x 51	4 x 51	5 x 51	
6mm <sup>2</sup> (8mm)	Vert	1 x 26	2 x 26	2 x 38	3 x 38	3 x 51	3 x 63	
	Horiz	2 x 13	2 x 26	3 x 26	3 x 38	4 x 38	5 x 38	
10mm <sup>2</sup> (10mm)	Vert	1 x 21	2 x 21	2 x 31	3 x 31	3 x 41	3 x 51	
	Horiz	2 x 11	2 x 21	3 x 21	3 x 31	4 x 31	5 x 31	

Based on the physical constraints of the enclosure.

TECHNICAL DATE SHEET

QBX RANGE ENCLOSURE

METRIC

DIMENSIONS IN MM (HEIGHT X WIDTH X DEPTH)		300 x 300 x 220	300 x 400 x 220	400 x 300 x 220	400 x 400 x 220	400 x 500 x 220	500 x 400 x 220	500 x 500 x 220
MATERIAL THICKNESS	BODY	1.2	1.2	1.2	1.2	1.2	1.2	1.2
	LID	1.2	1.2	1.2	1.2	1.2	1.2	1.2
WEIGHT (EMPTY ENCLOSURE)	kg	5.15	6.23	6.23	7.45	8.67	8.67	10.04
INTERNAL MOUNTING PLATE	dimensions, h x w	255 x 255	255 x 355	355 x 255	355 x 355	355 x 455	455 x 355	455 x 455
AVAILABLE GLANDING AREA	CENTRAL	247.5 x 160	(not central)	247.5 x 160	(not central)	(not central)	(not central)	(not central)
	LEFT	(central)	160 x 160	(central)	160 x 160	160 x 160	160 x 160	160 x 160
	RIGHT		160 x 160		160 x 160	247.5 x 160	160 x 160	247.5 x 160
MAXIMUM ENTRY GUIDE (Metric Glands)	M16	40		40				
	M20	24		24				
	M25	15		15				
BOTTOM / CENTRAL	M32	11	(not central)	11	(not central)	(not central)	(not central)	(not central)
	M40	7		7				
	M50	6		6				
	M63	3		3				
BOTTOM - LEFT	M16		25		25		25	25
	M20		16		16		16	16
	M25		9		9		9	9
	M32	(central)	6	(central)	6		6	6
	M40		4		4		4	4
	M50		4		4		4	4
	M63		1		1		1	1
BOTTOM - RIGHT	M16	(central)	25	(central)	25	40	25	40
	M20		16		16	24	16	24
	M25		9		9	15	9	15
	M32		6		6	11	6	11
	M40		4		4	7	4	7
	M50		4		4	6	4	6
	M63		1		1	3	1	3
Entries are based on recommended distance between centres								
TERMINAL CONTENT (No. of Terminal Rails x No. of Terminals per Rail)								
Terminal Type (thickness)	Terminal Rail Orientation							
2.5mm <sup>2</sup> (5mm)	Vert	2 x 42	3 x 42	2 x 62	3 x 62	4 x 62	3 x 82	4 x 82
	Horiz	2 x 42	2 x 62	3 x 42	3 x 62	3 x 82	4 x 62	4 x 82
4mm <sup>2</sup> (6mm)	Vert	2 x 35	3 x 35	2 x 51	3 x 51	4 x 51	3 x 68	4 x 68
	Horiz	2 x 35	2 x 51	3 x 35	3 x 51	3 x 68	4 x 51	4 x 68
6mm <sup>2</sup> (8mm)	Vert	2 x 26	3 x 26	2 x 38	3 x 38	4 x 38	3 x 51	4 x 51
	Horiz	2 x 26	2 x 38	3 x 26	3 x 38	3 x 51	4 x 38	4 x 51
10mm <sup>2</sup> (10mm)	Vert	2 x 21	3 x 21	2 x 31	3 x 31	4 x 31	3 x 41	4 x 41
	Horiz	2 x 21	2 x 31	3 x 21	3 x 31	3 x 41	4 x 31	4 x 41

Based on the physical constraints of the enclosure.

TECHNICAL DATE SHEET

QBX RANGE ENCLOSURE

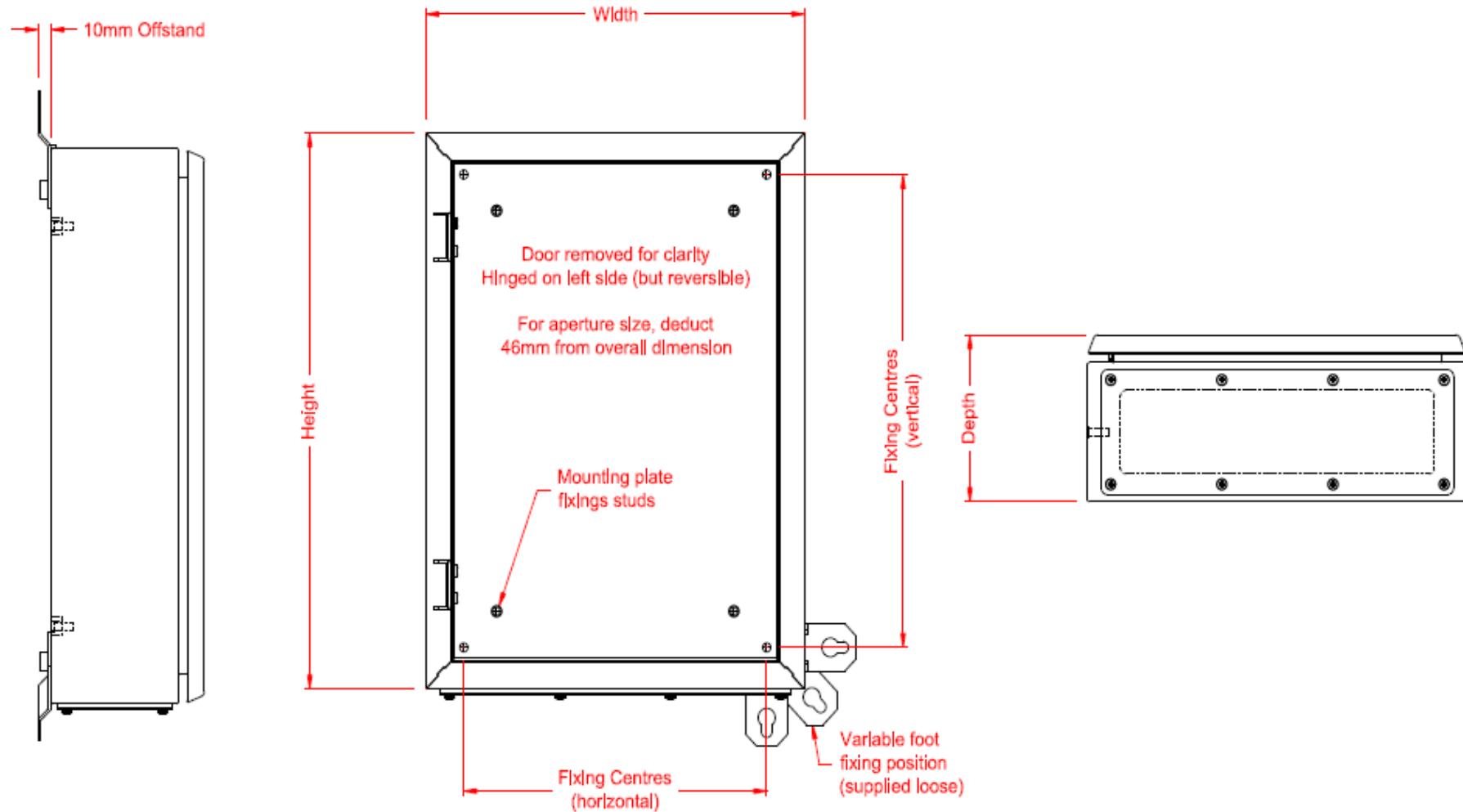
METRIC

DIMENSIONS IN MM (HEIGHT X WIDTH X DEPTH)		500 x 600 x 220	600 x 400 x 220	600 x 500 x 220	600 x 600 x 220	700 x 500 x 220	700 x 600 x 220	800 x 600 x 220
MATERIAL THICKNESS	BODY	1.2	1.2	1.2	1.2	1.2	1.2	1.2
	LID	1.2	1.2	1.2	1.2	1.2	1.2	1.2
WEIGHT (EMPTY ENCLOSURE)	kg	11.41	9.81	11.41	13.00	12.78	14.43	16.50
INTERNAL MOUNTING PLATE	dimensions, h x w	455 x 555	555 x 355	555 x 455	555 x 555	655 x 455	655 x 555	755 x 555
AVAILABLE GLANDING AREA	CENTRAL	(not central)	(not central)	(not central)	(not central)	(not central)	(not central)	(not central)
	LEFT	247.5 x 160	160 x 160	160 x 160	247.5 x 160	160 x 160	247.5 x 160	247.5 x 160
	RIGHT	247.5 x 160	160 x 160	247.5 x 160	247.5 x 160	247.5 x 160	247.5 x 160	247.5 x 160
MAXIMUM ENTRY GUIDE (Metric Glands)	M16							
	M20							
	M25							
BOTTOM / CENTRAL	M32	(not central)	(not central)	(not central)	(not central)	(not central)	(not central)	(not central)
	M40							
	M50							
	M63							
BOTTOM - LEFT	M16	40	25	25	40	25	40	40
	M20	24	16	16	24	16	24	24
	M25	15	9	9	15	9	15	15
	M32	11	6	6	11	6	11	11
	M40	7	4	4	7	4	7	7
	M50	6	4	4	6	4	6	6
	M63	3	1	1	3	1	3	3
BOTTOM - RIGHT	M16	40	25	40	40	40	40	40
	M20	24	16	24	24	24	24	24
	M25	15	9	15	15	15	15	15
	M32	11	6	11	11	11	11	11
	M40	7	4	7	7	7	7	7
	M50	6	4	6	6	6	6	6
	M63	3	1	3	3	3	3	3
Entries are based on recommended distance between centres								
TERMINAL CONTENT (No. of Terminal Rails x No. of Terminals per Rail)								
Terminal Type (thickness)		Terminal Rail Orientation						
2.5mm <sup>2</sup> (5mm)	Vert	5 x 82	3 x 102	4 x 102	5 x 102	4 x 122	5 x 122	5 x 142
	Horiz	4 x 102	5 x 62	5 x 82	5 x 102	6 x 82	6 x 102	7 x 102
4mm <sup>2</sup> (6mm)	Vert	5 x 68	3 x 85	4 x 85	5 x 85	4 x 101	5 x 101	5 x 118
	Horiz	4 x 85	5 x 51	5 x 68	5 x 85	6 x 68	6 x 85	7 x 85
6mm <sup>2</sup> (8mm)	Vert	5 x 51	3 x 63	4 x 63	5 x 63	4 x 76	5 x 76	5 x 88
	Horiz	4 x 63	5 x 38	5 x 51	5 x 63	6 x 51	6 x 63	7 x 63
10mm <sup>2</sup> (10mm)	Vert	5 x 41	3 x 51	4 x 51	5 x 51	4 x 61	5 x 61	5 x 71
	Horiz	4 x 51	5 x 31	5 x 41	5 x 51	6 x 41	6 x 51	7 x 51

Based on the physical constraints of the enclosure.

# QBX STEEL ENCLOSURES

## GENERAL ARRANGEMENT DRAWING - QBX



WWW.CABLEJOINTS.CO.UK  
**THORNE & DERRICK UK**  
TEL 0044 191 490 1547 FAX 0044 477 5371  
TEL 0044 117 977 4647 FAX 0044 977 5582  
WWW.THORNEANDDERRICK.CO.UK



# Kestrel PKE GRP ENCLOSURE RANGE



## HIGH INTEGRITY ENCLOSURE / TERMINATION SOLUTIONS

The **Kestrel PKE** range is an **ATEX** certified heavy-duty thick wall GRP junction box solution fully compliant with the impact, UV, thermal and ingress protection requirements for hazardous locations.

Available in a wide range of sizes to meet a diverse range of applications.

Using the highest quality materials, design benefits and precision manufacturing the **Kestrel PKE** range is the benchmark in Glass Reinforced Polyester enclosures for electrical and instrumentation applications.

Suitable for aggressive chemical and mechanically harsh environmental conditions.

Corrosion and seawater proof.



Enclosure shown with optional foot mounting kit, earth stud and one-piece cruciform brass earth continuity plate.



- Retained lid screws
- Silicon seal



- Thick wall construction
- Optional internal plates



- Optional internal / external earth stud

- |                                      |   |
|--------------------------------------|---|
| • <b>Material</b>                    | Carbon Loaded Glass Reinforced Polyester (GRP), with anti-static properties                     |
| • <b>Finish</b>                      | Natural Resin Black, similar to RAL 9005  |
| • <b>Gasket Material</b>             | Silicone rubber gasket  |
| • <b>Door Fixing</b>                 | Captive stainless steel cross head (+ -) screws   |
| • <b>Enclosure Mounting</b>          | 4 x fixing holes M4 / M6 depending on enclosure size, <b>optional</b> foot kit (as shown above) |
| • <b>Equipment Mountings</b>         | Brass mounting holes tapped at M3, M4, or M6 depending on enclosure size                        |
| • <b>Enclosure Earth</b>             | <b>Optional</b> M6 internal/external brass stud assembly  |
| • <b>Internal Earth</b>              | <b>Optional</b> one-piece cruciform brass earth continuity plate                                |
| • <b>Ingress Protection Rating</b>   | IP66  |
| • <b>Operating Temperature Range</b> | -55°C to +100°C   |
| • <b>Impact Resistance</b>           | 7 J (Nm)  |
| • <b>Toxicity</b>                    | Halogen and Cadmium free  |
| • <b>Certification</b>               | <b>Component certified</b> ATEX II 2 G Ex e II  |

NOTE: empty enclosure is component certified – for custom assembly services and apparatus certification please contact your local sales representative



**WWW.CABLEJOINTS.CO.UK**  
**THORNE & DERRICK UK**  
 TEL 0044 191 490 1547 FAX 0044 477 5371  
 TEL 0044 117 977 4647 FAX 0044 977 5582  
**WWW.THORNEANDDERRICK.CO.UK**

CCH PART REFERENCE		PKEPE080806 <small>PREFERRED SIZE</small>	PKEPE081106	PKEPE081606	PKEPE081906	PKEPE121309 <small>PREFERRED SIZE</small>	PKEPE122210 <small>PREFERRED SIZE</small>	PKEPE161610 <small>PREFERRED SIZE</small>	PKEPE162610 <small>PREFERRED SIZE</small>	PKEPE163610	PKEPE165610
<b>DIMENSIONS (mm)</b>	<b>(HEIGHT x WIDTH x DEPTH)</b>	<b>75 x 80 x 55</b>	<b>75 x 110 x 55</b>	<b>75 x 160 x 55</b>	<b>75 x 190 x 55</b>	<b>120 x 122 x 90</b>	<b>120 x 220 x 90</b>	<b>160 x 160 x 90</b>	<b>160 x 260 x 90</b>	<b>160 x 360 x 90</b>	<b>160 x 560 x 90</b>
	Depth of lid	15	15	15	15	25	25	21	20	20	20
	Depth	55	55	55	55	90	90	90	90	90	90
	Depth of Body	40	40	40	40	65	65	69	70	70	70
<b>EXTERNAL FIXING CENTRES (mm)</b>	Vertical	45	45	45	45	82	82	110	110	110	110
	Horizontal	68.5	98	148	178	106	204	140	240	340	540
<b>MATERIAL THICKNESS (mm)</b>	BODY	5.0	5.0	5.0	5.0	5.0	5.0	6.0	6.5	6.5	6.5
	LID	5.0	5.0	5.0	5.0	6.0	6.0	6.0	6.0	6.0	6.0
Weight (empty)	kg	0.23	0.28	0.37	0.43	0.66	1.04	1.28	1.62	2.30	3.16
<b>TERMINAL MOUNTING RAIL</b>											
<b>RAIL FIXING CENTRES (mm)</b>	Horizontal	59	89	139	169	95	193	132	233	333	534
<b>OVERALL RAIL LENGTH (mm)</b>	Horizontal	64	94	145	174	105	200	139	239	339	541
<b>AVAILABLE GLANDING AREA (mm)</b>	<b>TOP &amp; BOTTOM</b>	<b>48 x 32</b>	<b>73 x 32</b>	<b>130 x 32</b>	<b>162 x 32</b>	<b>83 x 57</b>	<b>182 x 57</b>	<b>114 x 65</b>	<b>214 x 62</b>	<b>314 x 62</b>	<b>2 x (242 x 62)</b>
	LEFT	27 x 26	27 x 26	27 x 26	29 x 27	58 x 50	58 x 50	82 x 50	82 x 55	82 x 55	81 x 55
	RIGHT	27 x 26	27 x 26	27 x 26	29 x 27	58 x 50	58 x 50	82 x 50	82 x 55	82 x 55	81 x 55
<b>MAXIMUM ENTRY GUIDE</b>											
	TOP & BOTTOM										
	M16	1	2	4	5	5	12	7	14	21	32
	M20	1	2	0	0	2	4	3	5	8	12
	M25	0	0	0	0	1	4	2	4	7	10
	M32	0	0	0	0	1	3	2	3	5	8
	** M40	0	0	0	0	0	0	0	0	0	0
	** M50	0	0	0	0	0	0	0	0	0	0
	** M63	0	0	0	0	0	0	0	0	0	0
	LEFT										
	M16	1	1	1	1	2	2	5	5	5	4
	M20	0	0	0	0	1	1	2	2	2	2
	M25	0	0	0	0	1	1	1	1	1	1
	M32	0	0	0	0	0	0	1	1	1	1
	** M40	0	0	0	0	0	0	0	0	0	0
	** M50	0	0	0	0	0	0	0	0	0	0
	** M63	0	0	0	0	0	0	0	0	0	0
	RIGHT										
	M16	1	1	1	1	2	2	5	5	5	4
	M20	0	0	0	0	1	1	2	2	2	2
	M25	0	0	0	0	1	1	1	1	1	1
	M32	0	0	0	0	0	0	1	1	1	1
	** M40	0	0	0	0	0	0	0	0	0	0
	** M50	0	0	0	0	0	0	0	0	0	0
	** M63	0	0	0	0	0	0	0	0	0	0
	** Please refer to ATEX Certificate										
<b>TERMINAL CONTENT</b>											
<b>Terminal Type (thickness)</b>	Orientation										
	WDU 2.5 (5.1)	Horizontal				1 x 12	1 x 35	1 x 24	1 x 43	1 x 60	1 x 98
	WDU 4 (6.1)	Horizontal				1 x 11	1 x 26	1 x 20	1 x 34	1 x 50	1 x 82
	WDU 6 (7.9)	Horizontal				-	-	1 x 12	1 x 24	1 x 37	1 x 61
	SAK 2.5 (6.0)	Horizontal	(Refer to AKZ terminal information below)			1 x 11	1 x 26	1 x 16	1 x 32	1 x 49	1 x 82
	SAK 4 (6.5)	Horizontal				1 x 10	1 x 24	1 x 15	1 x 30	1 x 45	1 x 75
	SAK 6 (8.0)	Horizontal				1 x 8	1 x 20	1 x 12	1 x 24	1 x 37	1 x 61
	SAK 10 (10.0)	Horizontal				-	-	1 x 10	1 x 19	1 x 29	1 x 49
	AKZ 4 (6.1)	Horizontal	1 x 8	1 x 13	1 x 21	1 x 26	1 x 14	1 x 30	1 x 34		

**NOTES :-**

- The information provided is based on the physical constraints of the enclosure. Please refer to the certificate for hazardous area applications.
- This information is for guidance purposes only. Cooper Crouse-Hinds UK Ltd reserves the right to make any necessary changes without notice



CCH PART REFERENCE		PKEPE121312	PKEPE161612	PKEPE252613 <small>PREFERRED SIZE</small>	PKEPE254013 <small>PREFERRED SIZE</small>	PKEPE256013	PKEPE414013	PKEPE252516	PKEPE254016	PKEPE256016	PKEPE414017	
<b>DIMENSIONS (mm)</b>	<b>(HEIGHT x WIDTH x DEPTH)</b>	120 x 122 x 120	160 x 160 x 120	250 x 255 x 120	250 x 400 x 120	250 x 600 x 120	405 x 400 x 120	250 x 255 x 160	250 x 400 x 160	250 x 600 x 160	405 x 400 x 165	
	Depth of lid	55	50	25	25	25	25	65	25	25	25	
	Depth	120	120	120	120	120	120	160	160	160	165	
	Depth of Body	65	70	95	95	95	95	95	135	135	140	
<b>EXTERNAL FIXING CENTRES (mm)</b>	Vertical	82	110	200	200	200	355	200	200	200	355	
	Horizontal	106	140	235	380	580	380	235	380	580	380	
<b>MATERIAL THICKNESS (mm)</b>	BODY	5.0	6.0	6.5	6.5	6.5	6.5	6.5	6.5	6.5	6.5	
	LID	6.0	6.0	6.0	6.0	6.0	6.0	6.0	6.0	6.0	6.0	
Weight (empty)	kg	0.89	1.50	2.73	3.65	5.38	5.08	3.68	4.80	5.38	7.74	
<b>TERMINAL MOUNTING RAIL</b>												
<b>RAIL FIXING CENTRES (mm)</b>	Horizontal	95	132	227	373	570	372	227	373	570	372	
<b>OVERALL RAIL LENGTH (mm)</b>	Horizontal	105	139	234	379	580	379	234	379	580	379	
<b>AVAILABLE GLANDING AREA (mm)</b>	<b>TOP &amp; BOTTOM</b>	83 x 57	112 x 54	207 x 85	352 x 85	2 x (260 x 85)	352 x 85	207 x 85	352 x 85	2 x (260 x 85)	352 x 129	
	LEFT	58 x 50	82 x 50	172 x 80	172 x 80	172 x 80	327 x 80	172 x 80	172 x 80	172 x 80	327 x 124	
	RIGHT	58 x 50	82 x 50	172 x 80	172 x 80	172 x 80	327 x 80	172 x 80	172 x 80	172 x 80	327 x 124	
<b>MAXIMUM ENTRY GUIDE</b>												
	TOP & BOTTOM											
	M16	5	8	20	36	52	36	20	36	52	36	
	M20	4	6	10	18	26	18	10	18	26	18	
	M25	3	4	8	15	22	15	8	15	22	15	
	M32	2	2	3	6	8	6	3	6	8	6	
	** M40	1	1	3	5	8	5	3	5	8	5	
	** M50	1	1	2	4	6	4	2	4	6	4	
	** M63	0	0	0	0	0	0	0	0	0	0	
	LEFT											
	M16	2	5	17	17	17	33	17	17	17	33	
	M20	2	4	8	8	8	16	8	8	8	16	
	M25	1	4	3	6	6	7	3	6	6	7	
	M32	1	2	3	3	3	5	3	3	3	5	
	** M40	1	1	2	2	2	5	2	2	2	5	
	** M50	0	0	2	2	2	4	2	2	2	4	
	** M63	0	0	0	0	0	0	0	0	0	0	
	RIGHT											
	M16	2	5	17	17	17	33	17	17	17	33	
	M20	2	4	8	8	8	16	8	8	8	16	
	M25	1	2	3	6	6	7	3	6	6	7	
	M32	1	2	3	3	3	5	3	3	3	5	
	** M40	0	1	2	2	2	5	2	2	2	5	
	** M50	0	0	2	2	2	4	2	2	2	4	
	** M63	0	0	0	0	0	0	0	0	0	0	
	** Please refer to ATEX Certificate											
<b>TERMINAL CONTENT</b>												
<b>Terminal Type (thickness)</b>	Orientation											
	WDU 2.5 (5.1)	Horizontal	1 x 12	1 x 24	2 x 43	2 x 67	2 x 108	3 x 67	2 x 43	2 x 67	2 x 108	3 x 67
	WDU 4 (6.1)	Horizontal	1 x 11	1 x 20	2 x 35	1 x 56	1 x 91	3 x 56	2 x 35	1 x 56	1 x 91	3 x 56
	WDU 6 (7.9)	Horizontal	-	1 x 12	2 x 24	1 x 42	1 x 67	2 x 42	2 x 24	1 x 42	1 x 67	2 x 42
	SAK 2.5 (6.0)	Horizontal	1 x 11	1 x 16	2 x 32	2 x 56	2 x 90	3 x 56	2 x 32	2 x 56	2 x 90	3 x 56
	SAK 4 (6.5)	Horizontal	1 x 10	1 x 15	2 x 29	2 x 51	2 x 83	3 x 51	2 x 29	2 x 51	2 x 83	3 x 51
	SAK 6 (8.0)	Horizontal	1 x 8	1 x 12	2 x 24	2 x 42	2 x 67	3 x 42	2 x 24	2 x 42	2 x 67	3 x 42
	SAK 10 (10.0)	Horizontal	-	1 x 10	2 x 19	2 x 33	2 x 54	3 x 33	2 x 19	2 x 33	2 x 54	3 x 33
	AKZ 4 (6.1)	Horizontal										

(Refer to WDU and SAK terminal information above)

**NOTES :-**

- The information provided is based on the physical constraints of the enclosure. Please refer to the certificate for hazardous area applications.
- This information is for guidance purposes only. Cooper Crouse-Hinds UK Ltd reserves the right to make any necessary changes without notice



**WWW.CABLEJOINTS.CO.UK**  
**THORNE & DERRICK UK**  
 TEL 0044 191 490 1547 FAX 0044 477 5371  
 TEL 0044 117 977 4647 FAX 0044 977 5582  
**WWW.THORNEANDDERRICK.CO.UK**



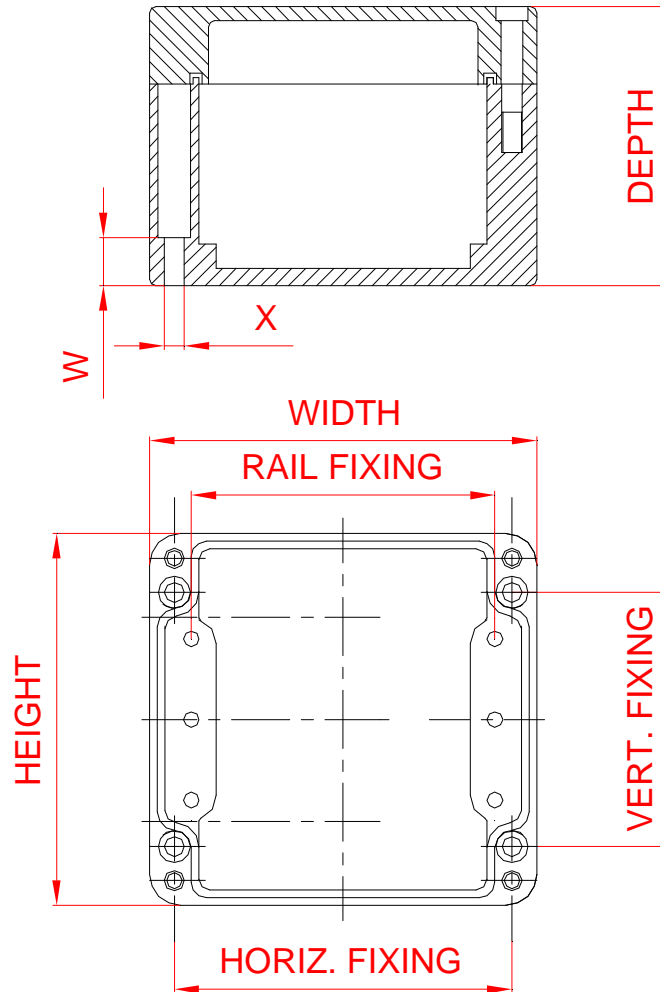
# Kestrel PKE GRP ENCLOSURE RANGE

**COOPER** Crouse-Hinds

## GENERAL ARRANGEMENT DRAWING

W=  
8.0 (080806 - 081906)  
15.0 (121309 - 122209)  
20.0 (161609 - 414017)

X=  
Ø4.6 (080806 - 081906)  
Ø6.5 (121309 - 414017)



WWW.CABLEJOINTS.CO.UK  
**THORNE & DERRICK UK**  
TEL 0044 191 490 1547 FAX 0044 477 5371  
TEL 0044 117 977 4647 FAX 0044 977 5582  
WWW.THORNEANDDERRICK.CO.UK

REV 0907

# ENCLOSURE SOLUTIONS

**COOPER** Crouse-Hinds

## CUSTOMISED ENCLOSURE SERVICES

In addition to manufacturing our standard enclosure product lines, Cooper Crouse-Hinds (UK) Ltd. also provide an enclosure customisation service to design, manufacture and configuration of enclosures to meet customer's specific requirements.

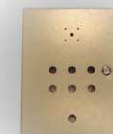
These customised enclosures are made to the same high quality and performance as our standard enclosure product line and can benefit from the same inherent ingress protection (IP), impact resistance and corrosion resistance.

A customised enclosure may be for an OEM equipment manufacturer requiring an enclosure to house specific electrical, electronic or mechanical equipment or for a specific project or contract for the installation of a copper power, instrumentation or communications infrastructure.

The various parameters of the enclosure can be selected from a range the materials. Depending on the environment in which it will be installed; this could be either 316L, 304 stainless steel (both supplied electro-polished finish as standard) or powder coated steel to RAL 7032, or a customised colour on request. Physical dimensions of the enclosure maybe determined and options such as door fastening method; ¼ turn locking or retained bolts may also be chosen by preference.

We can also provide any required cable gland clearance holes or cut-outs for the mounting of switches, push-buttons or meters etc.

As part of our customisation service we can also populate the enclosure with terminals, PLC's, Profibus hubs and other various components including cable glands and breather drains. We are also able to provide a service to install free issue items in to the enclosure, include any labeling requirements if provided with all the necessary information.



WWW.CABLEJOINTS.CO.UK  
**THORNE & DERRICK UK**  
TEL 0044 191 490 1547 FAX 0044 477 5371  
TEL 0044 117 977 4647 FAX 0044 977 5582  
WWW.THORNEANDDERRICK.CO.UK

REV 0907

# ENCLOSURE SOLUTIONS

**COOPER** Crouse-Hinds

Enclosure Range : Size Summary (Size Reference : height / width / depth)

Ex-Cell	NXT	STB	QBX	Kestrel
23/15/13cm	22/15/13cm	12/12/08cm	20/20/12cm	08/08/06cm
26/26/15cm	26/26/16cm	15/12/08cm	30/20/12cm	08/11/06cm
30/20/15cm	26/26/20cm	15/15/09cm	30/30/12cm	08/16/06cm
30/30/15cm	30/30/16cm	15/19/09cm	30/40/12cm	08/19/06cm
40/30/15cm	30/30/20cm	16/38/12cm	40/30/12cm	12/13/09cm
40/40/15cm	30/35/20cm	19/19/10cm	40/40/12cm	12/22/10cm
40/50/15cm	38/26/16cm	25/25/12cm	50/40/12cm	16/16/10cm
50/40/15cm	38/26/20cm	25/40/13cm	60/40/12cm	16/26/10cm
50/50/15cm	38/45/20cm	38/38/22cm	30/30/22cm	16/36/10cm
60/40/15cm	45/38/16cm	40/60/22cm	30/40/22cm	16/56/10cm
60/50/15cm	45/38/20cm	60/40/22cm	40/30/22cm	25/26/13cm
60/60/15cm	45/55/20cm		40/40/22cm	25/26/17cm
50/60/20cm	48/48/20cm		40/50/22cm	25/40/13cm
60/40/20cm	50/35/20cm		50/30/22cm	25/40/17cm
60/50/20cm	50/64/20cm		50/40/22cm	25/60/13cm
60/60/20cm	62/45/20cm		50/50/22cm	25/40/17cm
60/76/20cm	74/55/20cm		50/60/22cm	
76/50/20cm	76/50/20cm		60/30/22cm	
76/60/20cm	86/64/20cm		60/40/22cm	
76/76/20cm	91/61/20cm		60/50/22cm	
80/60/20cm	98/74/20cm		60/60/22cm	
80/80/20cm			70/30/22cm	
91/61/20cm			70/40/22cm	
91/76/20cm			70/50/22cm	
91/91/20cm			70/60/22cm	
100/80/30cm			80/30/22cm	
100/100/30cm			80/40/22cm	
120/100/30cm			80/50/22cm	
120/120/30cm			80/60/22cm	
160/120/40cm	190/100/30cm	125/30/20cm	120/120/40cm	

**INTERMEDIATE SIZES AND INCREASED DEPTHS  
AVAILABLE ON ALL RANGES**

*Custom Product: test us with your specific requirements...*



**DQS GmbH**

Certificate No. 000431 QM



**Designed, Engineered &  
Manufactured in the UK**



**Available World-Wide**



**WWW.CABLEJOINTS.CO.UK  
THORNE & DERRICK UK**

**TEL 0044 191 490 1547 FAX 0044 477 5371**

**TEL 0044 117 977 4647 FAX 0044 977 5582**

**WWW.THORNEANDDERRICK.CO.UK**