



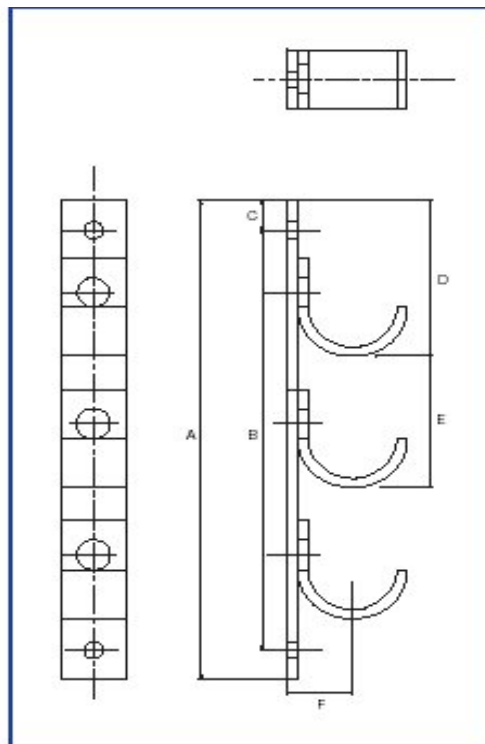
# Technical Data Sheet

## Cable Hangers

Drawing Reference: 3128 @ Revision 1

Steel Specification: S275 JR+AR grade Hot Rolled Structural Steel to BS EN 10025-2:20

Galvanising Specification: Hot dip spin galvanising to BS EN ISO1461:1999 after manufacture



Part No.	Ways	Dimensions mm						Material Size		Fixing holes dia.	Pack Qty	Weight g
		A	B	C	D	E	F	Width	Thickness			
CH1W1	1	145	105	20	105	-	37	40	6	11	1	500
CH2W1	2	235	195	20	105	90	37	40	6	11	1	900
CH3W1	3	325	285	20	105	90	37	40	6	11	1	1300
CH4W1	4	415	375	20	105	90	37	40	6	11	1	1700
CH5W1	5	505	465	20	105	90	37	40	6	11	1	2100
CH6W1	6	595	555	20	105	90	37	40	6	11	1	2500
CH1W2	1	170	130	20	130	-	50	50	6	13	1	820
CH2W2	2	295	255	20	130	125	50	50	6	13	1	1480
CH3W2	3	420	380	20	130	125	50	50	6	13	1	2240
CH4W2	4	545	505	20	130	125	50	50	6	13	1	2980
CH5W2	5	670	630	20	130	125	50	50	6	13	1	3710
CH6W2	6	795	755	20	130	125	50	50	6	13	1	4440
CH1W3	1	185	145	20	145	-	62	50	6	13	1	980
CH2W3	2	345	305	20	145	160	62	50	6	13	1	1900
CH3W3	3	505	465	20	145	160	62	50	6	13	1	2820
CH4W3	4	665	625	20	145	160	62	50	6	15	1	3600
CH5W3	5	825	785	20	145	160	62	50	6	15	1	4560
CH6W3	6	985	945	20	145	160	62	50	6	15	1	5600

Size 1 for cables up to 50mm Diameter

Size 2 for cables 51 - 75mm Diameter

Size 3 for cables 76 - 100mm Diameter

CABLE JOINTS, CABLE TERMINATIONS, CABLE GLANDS, CABLE CLEATS  
FEEDER PILLARS, FUSE LINKS, ARC FLASH, CABLE ROLLERS, CUT-OUTS



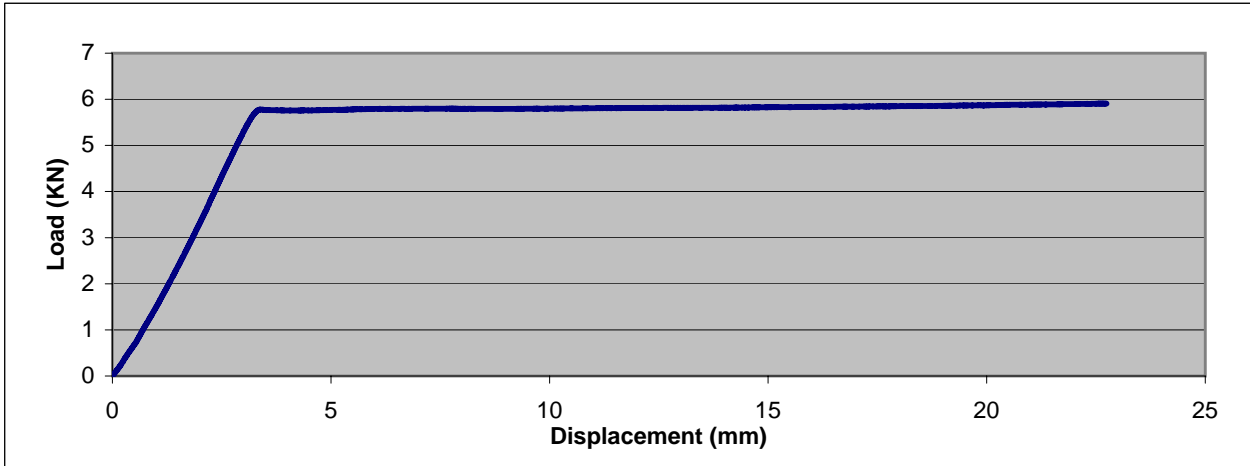
Load Capacity:

The recommended safe working load for individual hooks is detailed below. Brackets with multiple hook configurations are designed to operate with all hooks carrying their maximum load.

**Recommended safe working loads for Size 1 Cable Hangers**

			Newton's	Kg
<b>CH1W1</b>	Cable Hanger 1-Way	Cables to 50mm Diameter	2000	200
<b>CH2W1</b>	Cable Hanger 2-Way	Cables to 50mm Diameter	2000	200
<b>CH3W1</b>	Cable Hanger 3-Way	Cables to 50mm Diameter	2000	200
<b>CH4W1</b>	Cable Hanger 4-Way	Cables to 50mm Diameter	2000	200
<b>CH5W1</b>	Cable Hanger 5-Way	Cables to 50mm Diameter	2000	200
<b>CH6W1</b>	Cable Hanger 6-Way	Cables to 50mm Diameter	2000	200

**Typical Tensile Test Data for Size 1 Cable Hangers**

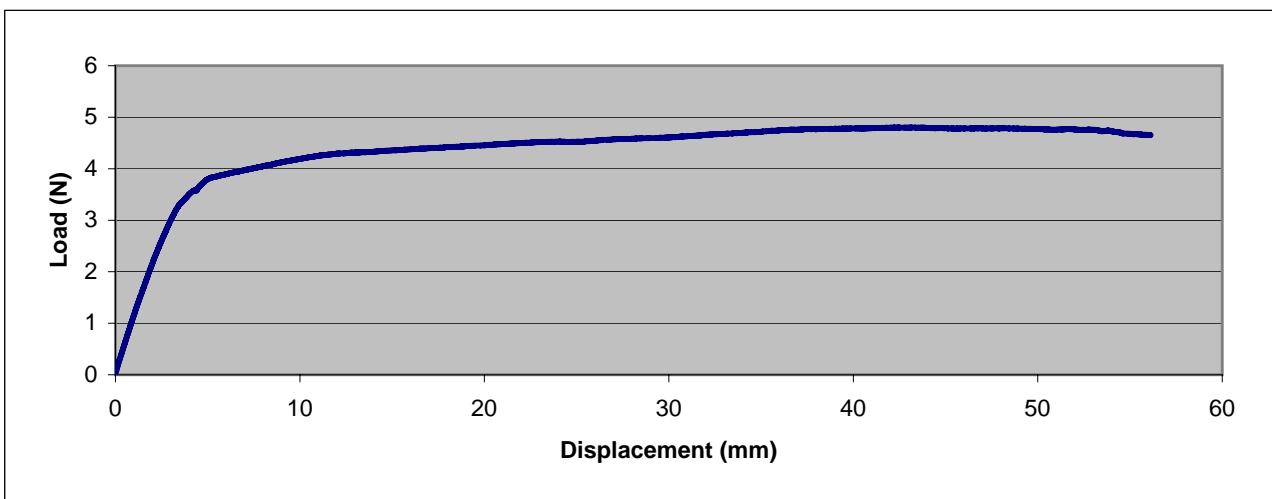


Typical yield at 5.7KN

**Recommended Safe Working Loads for Size 2 Cable Hangers**

			Newton's	Kg
<b>CH1W2</b>	Cable Hanger 1-Way	Cables 51 to 75mm Diameter	2500	250
<b>CH2W2</b>	Cable Hanger 2-Way	Cables 51 to 75mm Diameter	2500	250
<b>CH3W2</b>	Cable Hanger 3-Way	Cables 51 to 75mm Diameter	2500	250
<b>CH4W2</b>	Cable Hanger 4-Way	Cables 51 to 75mm Diameter	2500	250
<b>CH5W2</b>	Cable Hanger 5-Way	Cables 51 to 75mm Diameter	2500	250
<b>CH6W2</b>	Cable Hanger 6-Way	Cables 51 to 75mm Diameter	2500	250

**Typical Tensile Test Data for Size 2 Cable Hangers**

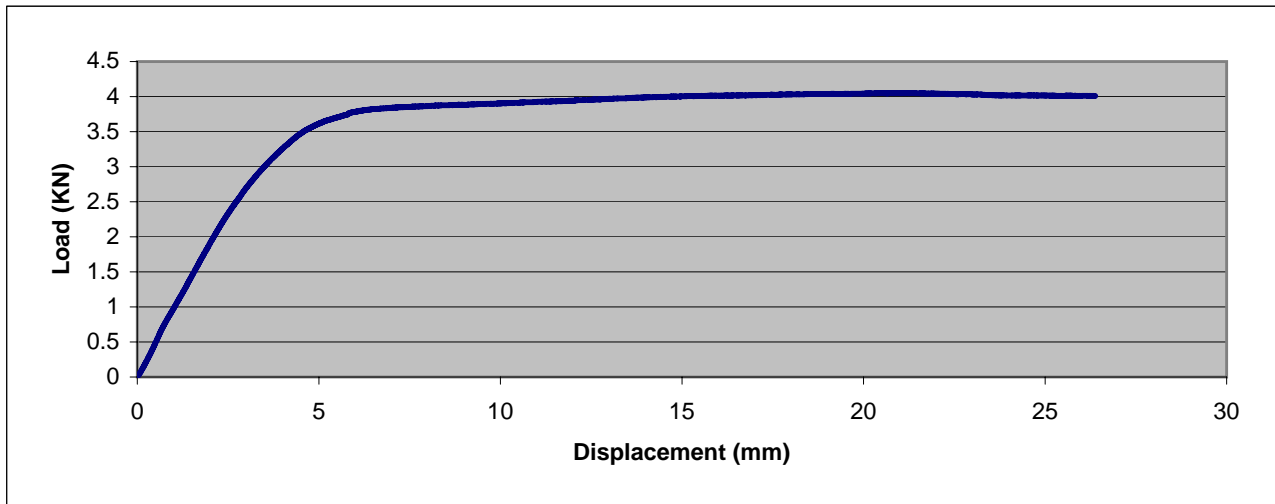


Typical yield at 4.8KN

### Recommended Safe Working Loads for Size 3 Cable Hangers

			Newtons	Kg
<b>CH1W3</b>	Cable Hanger 1-Way	Cables 76 to 100mm Diameter	2500	250
<b>CH2W3</b>	Cable Hanger 2-Way	Cables 76 to 100mm Diameter	2500	250
<b>CH3W3</b>	Cable Hanger 3-Way	Cables 76 to 100mm Diameter	2500	250
<b>CH4W3</b>	Cable Hanger 4-Way	Cables 76 to 100mm Diameter	2500	250
<b>CH5W3</b>	Cable Hanger 5-Way	Cables 76 to 100mm Diameter	2500	250
<b>CH6W3</b>	Cable Hanger 6-Way	Cables 76 to 100mm Diameter	2500	250

### Typical Tensile Test Data for Size 3 Cable Hangers



Typical yield at 3.7kN



CABLE JOINTS, CABLE TERMINATIONS, CABLE GLANDS, CABLE CLEATS  
FEEDER PILLARS, FUSE LINKS, ARC FLASH, CABLE ROLLERS, CUT-OUTS

11KV 33KV CABLE JOINTS & CABLE TERMINATIONS

FURSE EARTHING

[www.cablejoints.co.uk](http://www.cablejoints.co.uk)

**Thorne and Derrick UK**

Tel 0044 191 490 1547 Fax 0044 191 477 5371

Tel 0044 117 977 4647 Fax 0044 117 9775582