

THE CLASSIC S10099 HAS BEEN DISCONTINUED AND REPLACED WITH THE S75099. REPAIR PARTS ARE LIMITED AND MAY NOT BE AVAILABLE. CONTACT FACTORY FOR AVAILABILITY.

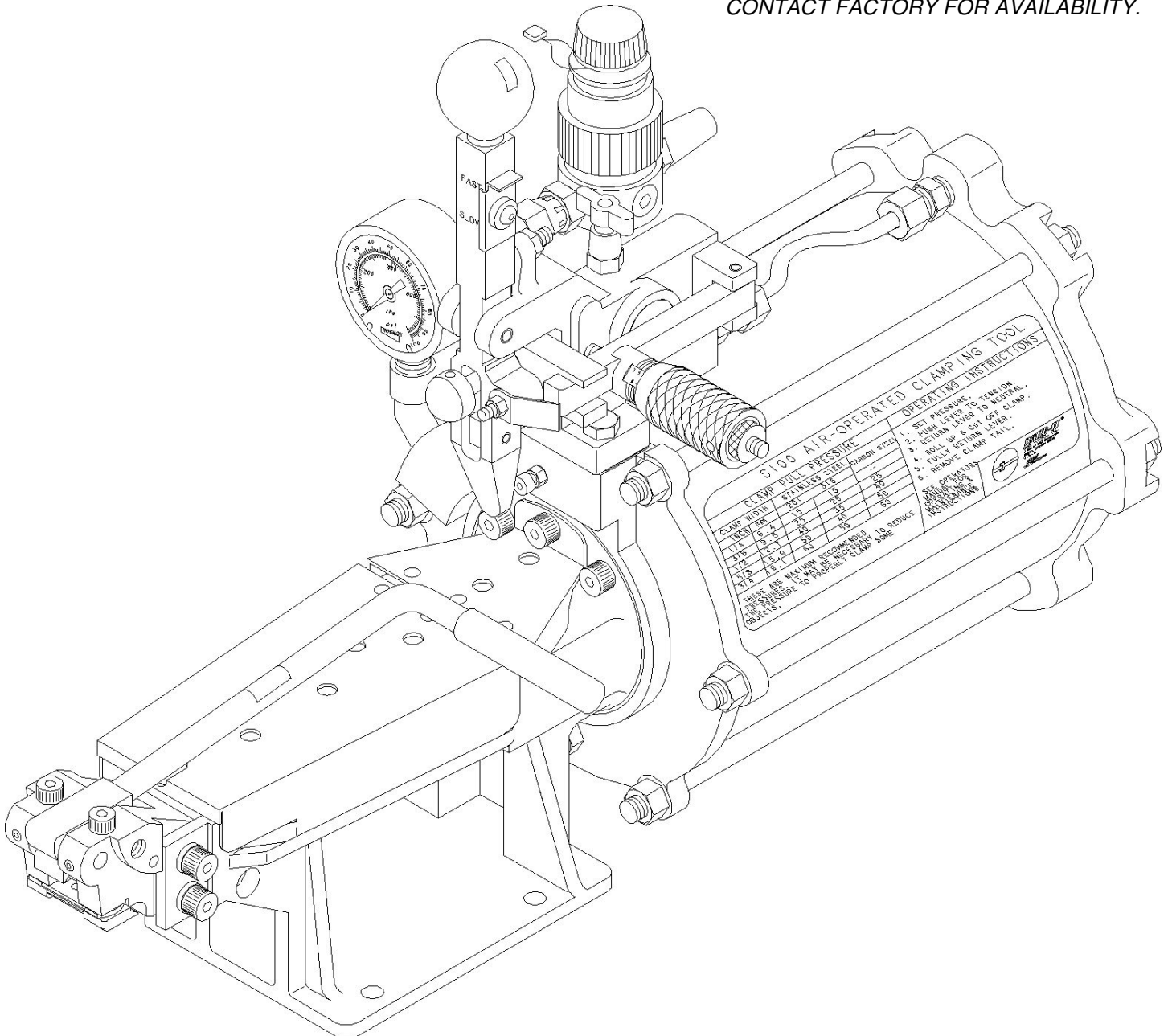


Table of Contents



S10099 Classic Air Tool

AIR TOOL SPECIFICATIONS AIR LINE REQUIREMENTS	3
SAFETY PROCEDURES	3
INSPECTION AND INSTALLATION	4
MOUNTING TEMPLATE	5
RECOMMENDED OPERATING PRESSURE	6
PULL-UP SPEED CONTROL	7
PRESSURE INDICATOR CALIBRATION	8
HOLDING PRESSURE ADJUSTMENT	9
CLAMP APPLICATION	10
TROUBLESHOOTING	11
MAINTENANCE	12
MAINTENANCE CHECK LIST	13
WARRANTY	13
REPAIR PARTS LIST - CYLINDER ASSEMBLY	14
REPAIR PARTS LIST - VALVE ASSEMBLY	15
REPAIR PARTS LIST - JUNIOR CLAMP HEAD	16
OPTION - FILTER/LUBRICATOR	17
OPTION -12° INCLINE BASE	18

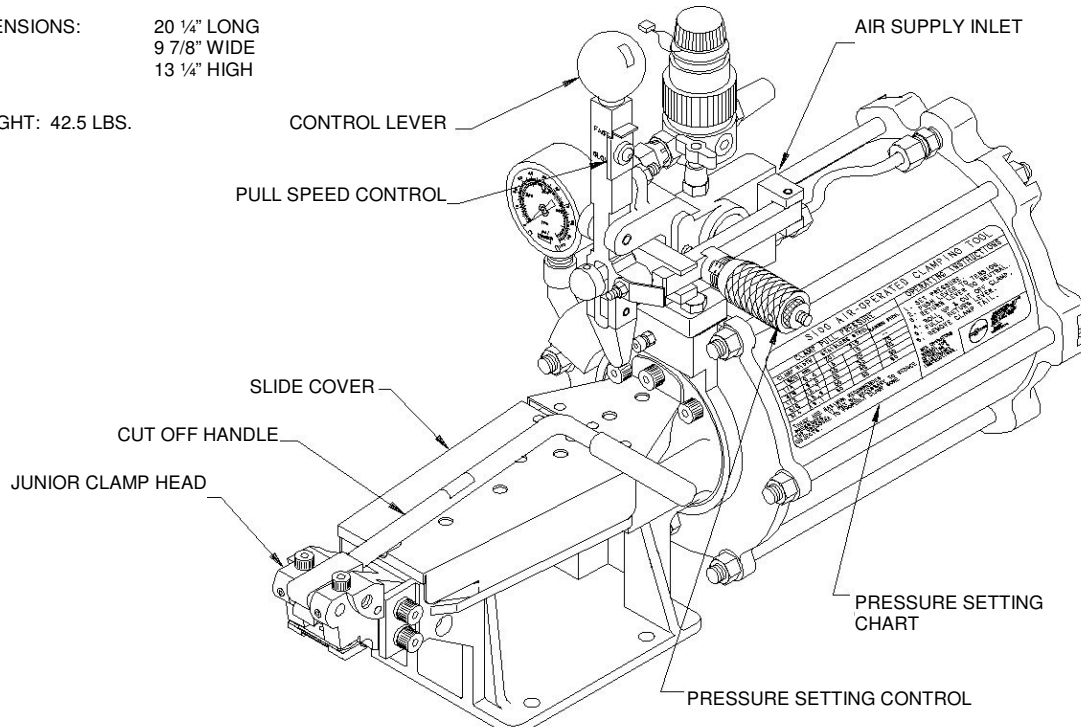
Specifications and Safety



S10099 Classic Air Tool

OVERALL DIMENSIONS: 20 1/4" LONG
9 7/8" WIDE
13 1/4" HIGH

SHIPPING WEIGHT: 42.5 LBS.



SAFETY PROCEDURES

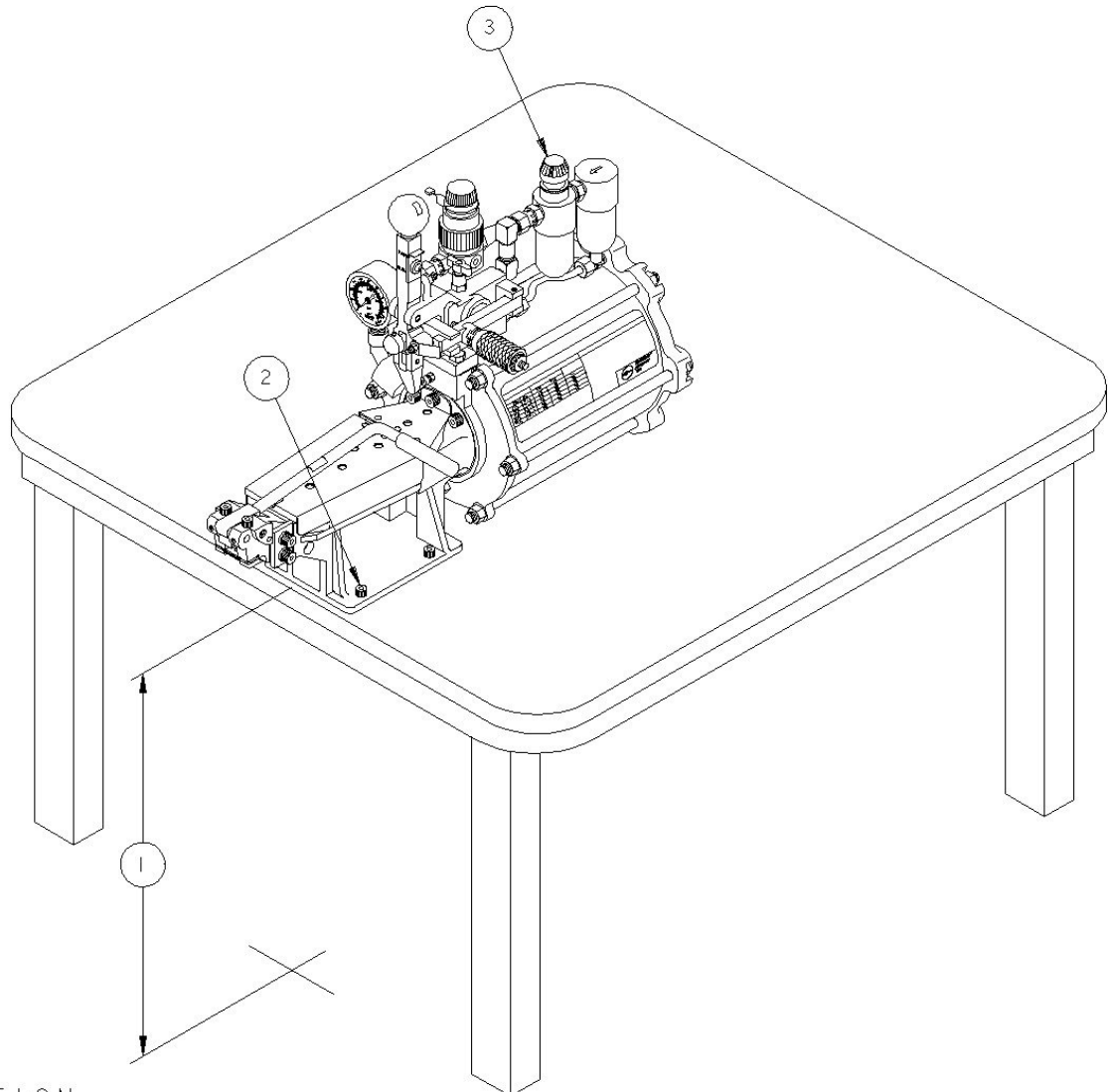
1. FAMILIARIZE YOURSELF WITH OPERATING PROCEDURES BEFORE OPERATING THE S10099 AIR TOOL.
2. DO NOT OPERATE TOOL WITHOUT SLIDE COVER IN PLACE.
3. USE ONLY RECOMMENDED BAND-IT PREFORMED CLAMPS OR BAND AND BUCKLE WITH THE PROPER HEAD ASSEMBLY.
4. DO NOT EXCEED RECOMMENDED PRESSURE SETTINGS. EXCESS PRESSURE MAY CAUSE SUDDEN CLAMP FAILURE DURING APPLICATION OR RESULT IN AN UNSAFE CLAMP. CERTAIN APPLICATIONS MAY REQUIRE A REDUCED PRESSURE SETTING. SEE PAGE 6 FOR RECOMMENDED PRESSURE SETTINGS. ALSO SEE PAGE 6 FOR IMPORTANT ADVICE AND WARNINGS.
5. ALWAYS KEEP FINGERS CLEAR OF CLAMP DURING APPLICATION.
6. DISCONNECT AIR SUPPLY BEFORE SERVICING AIR TOOL.
7. TOOL MUST BE FIRMLY MOUNTED (SEE INSTALLATION INSTRUCTIONS ON PAGE 4).
8. SAFETY GLASSES OR GOGGLES SHOULD BE WORN WHEN APPLYING CLAMPS.
9. ALWAYS KEEP TOOL IN GOOD OPERATING CONDITION.

AIR LINE REQUIREMENTS

AIR LINE PRESSURE:	100 PSI MINIMUM, 150 PSI MAXIMUM (7.0 – 10.5 kg/cm ² , 689 – 1034 kPa)
CONSUMPTION:	3-5 CFM WITH 20 GALLON TANK MIN.
LINE SIZE:	1/4" ID MINIMUM
CONNECTION:	1/4" NPT
FILTER / LUBRICATOR:	MUST BE ADDED TO AIR SUPPLY. SEE PAGE 18 FOR BAND-IT FILTER / LUBRICATION KIT

INSPECTION

WHEN REMOVING AIR TOOL FROM SHIPPING CARTON, CHECK FOR SHIPPING DAMAGE WHICH SHOULD BE REPORTED TO THE CARRIER.



INSTALLATION

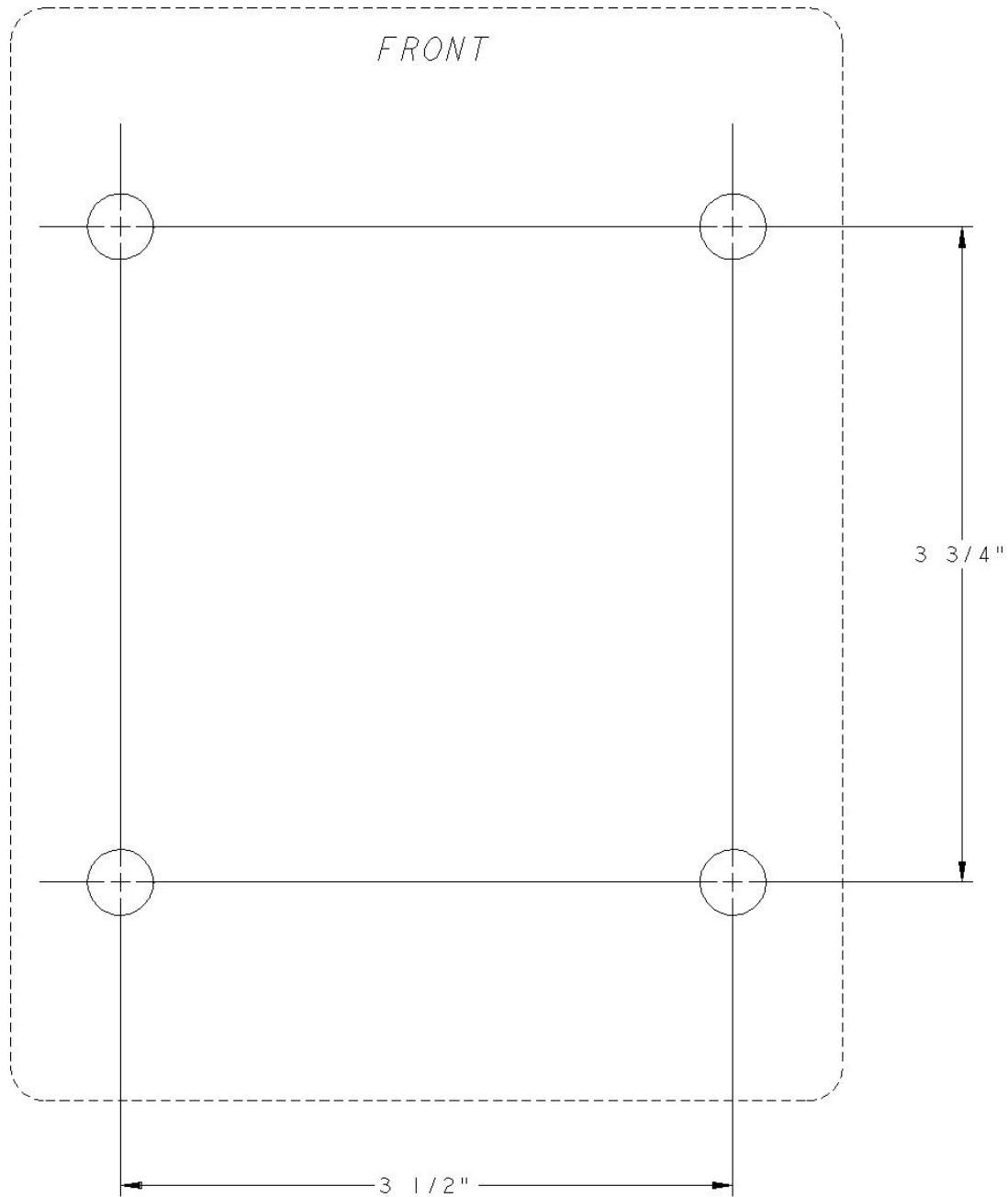
1. RECOMMENDED TABLE HEIGHT IS 34" TO 40". THIS IS THE OPTIMUM RANGE FOR APPLYING CLAMPS TO MOST ITEMS. MAKE SURE THE INSIDE CLEARANCE IS ADEQUATE FOR ITEMS TO BE CLAMPED.
2. THE AIR TOOL MUST BE FIRMLY SECURED TO WORK BENCH. USE 5/16" DIAMETER FASTENING HARDWARE (NOT SUPPLIED WITH AIR TOOL). AIR TOOL MAY BE MOUNTED ON AN OPTIONAL 12° INCLINE BASE (SEE PAGE 18).
3. THE INCOMING AIR SUPPLY MUST COME THROUGH A FILTER/LUBRICATOR, LOCATED NO MORE THAN 30" FROM AIR TOOL (SEE PAGE 17 FOR BAND-IT FILTER / LUBRICATOR KIT).

USE OF THE S10099 AIR TOOL WITHOUT A FILTER / LUBRICATOR VOIDS THE WARRANTY

Mounting Template



S10099 Classic Air Tool



NOTES:

1. AIR TOOL MUST BE FIRMLY SECURED!
2. USE 5/16" FASTENING HARDWARE.
3. DO NOT USE S10099 AIR TOOL WITHOUT A FILTER / LUBRICATOR.

OPERATING PRESSURES SHOWN BELOW ARE IN PSI

CLAMP WIDTH		201 STAINLESS STEEL		316 STAINLESS STEEL		CARBON STEEL	
INCH	mm	PULL UP PRESSURE	HOLDING PRESSURE	PULL UP PRESSURE	HOLDING PRESSURE	PULL UP PRESSURE	HOLDING PRESSURE
1/4"	6.4	15	4	15	4	--	--
3/8"	9.5	25	5	20	5	25	6
1/2"	12.7	40	6	35	6	40	7
5/8"	15.9	50	7	40	7	50	8
3/4"	19.1	60	8	50	8	60	9

NOTES:

THESE ARE RECOMMENDED MAXIMUM PRESSURES FOR BAND-IT JUNIOR® CLAMPS. IT MAY BE NECESSARY TO REDUCE PRESSURE SETTINGS TO PROPERLY CLAMP SOME OBJECTS.

USE ONLY BAND-IT CLAMPS ON THE AIR TOOL.

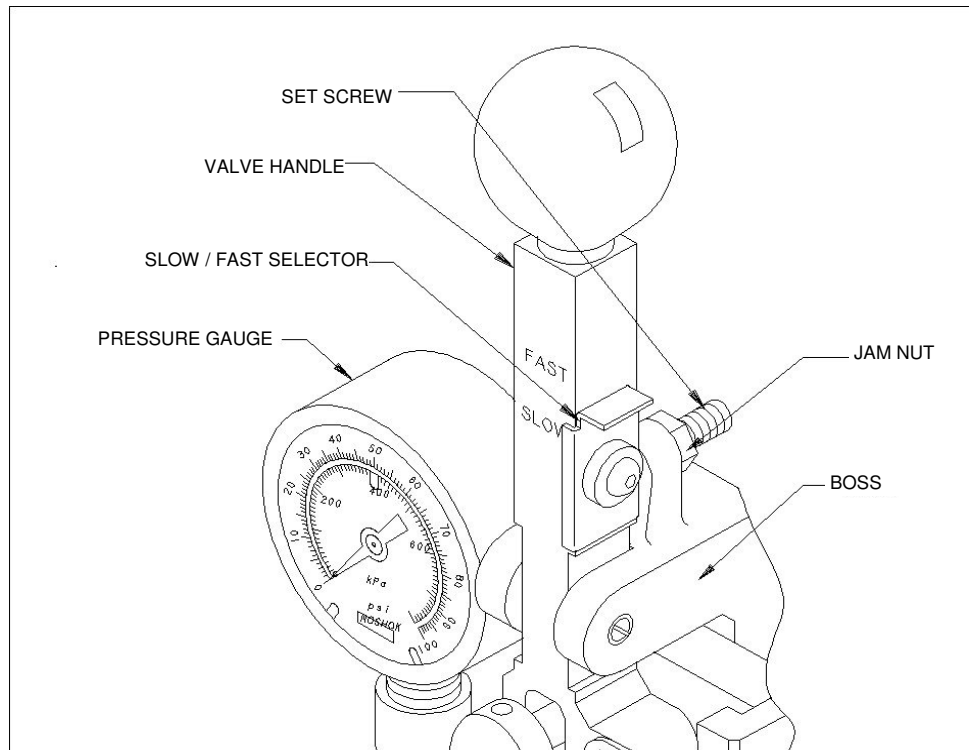
**IMPORTANT ADVICE AND WARNINGS TO USER.
READ BEFORE APPLYING CLAMPS.**

WHEN CLAMPING A HOSE END, REMEMBER THAT A TIGHTER CLAMP KEEPS THE FITTING MORE SECURE, BUT EXCESS TENSION COULD DAMAGE THE HOSE. FITTING STEM MUST HAVE PROMINENT BARBS FOR PROPER RETENTION INSIDE THE HOSE, BUT MUST NOT BE SHARP TO PREVENT CUTTING INTO THE HOSE. HOSE, FITTING AND CLAMP MUST BE COMPATIBLE WITH EACH OTHER AND THE WORKING ENVIRONMENT USED IN. IF IN DOUBT, CONSULT THE HOSE OR FITTING MANUFACTURER OR CALL BAND-IT.

CLAMPING OBJECTS OTHER THAN HOSE REQUIRE SIMILAR PRECAUTIONS.

CAUTION: IMPROPERLY TIGHTENED CLAMPS MAY RESULT IN DANGEROUS HOSE ASSEMBLIES, WHICH COULD CAUSE INJURIES OR PROPERTY DAMAGE.

CAUTION: ABUSE OR USE OF A HOSE OUTSIDE THE MANUFACTURER'S RECOMMENDED CONDITIONS MAY CAUSE IT TO QUICKLY DETERIORATE AND BECOME A SAFETY HAZARD. THIS COULD RESULT IN SERIOUS INJURY OR PROPERTY DAMAGE. INSPECT AND TEST HOSE ASSEMBLIES FREQUENTLY. REPAIR OR REPLACE AT THE SLIGHTEST SIGN OF DAMAGE OR DETERIORATION.



PULL UP SPEED CALIBRATION

1. START WITH PISTON ROD IN FORWARD POSITION AND SET SCREW WITH JAM NUT ALL THE WAY BACK (SCREW END FLUSH WITH BOSS). PUT SLOW / FAST SELECTOR ON "SLOW".
2. SLOWLY PUSH VALVE HANDLE FORWARD UNTIL PISTON GLIDES BACK AND PRESSURE INDICATES ON THE PRESSURE GAUGE.
3. KEEP HANDLE IN THAT POSITION AND TURN SCREW OUT UNTIL IT CONTACTS THE SURFACE OF THE SLOW / FAST SELECTOR. HOLD SCREW IN POSITION WITH HEX WRENCH AND TIGHTEN JAM NUT.
4. CHECK CALIBRATION BY CYCLING TOOL ON BOTH SLOW AND FAST PULL UP. OBSERVE THE DIFFERENCE IN PISTON SPEED.

FOR APPLYING MOST ALL BAND-IT PREFORMED CLAMPS, PULL SPEED CONTROL SHOULD BE IN "UP" (FAST) POSITION.

CASES WHERE PULL SPEED CONTROL MAY BE USED IN "DOWN" (SLOW) POSITION ARE:

- A) WHEN EXACT POSITIONING OF CLAMP IS REQUIRED.
- B) FOR APPLYING CLAMPS TO LARGE OR HEAVY AND HARD TO HANDLE HOSE.
- C) TRAINING A NEW OPERATOR.
- D) IF CLAMPS ARE NOT PULLING SMOOTHLY.

Pressure Indicator Calibration



S10099 Classic Air Tool

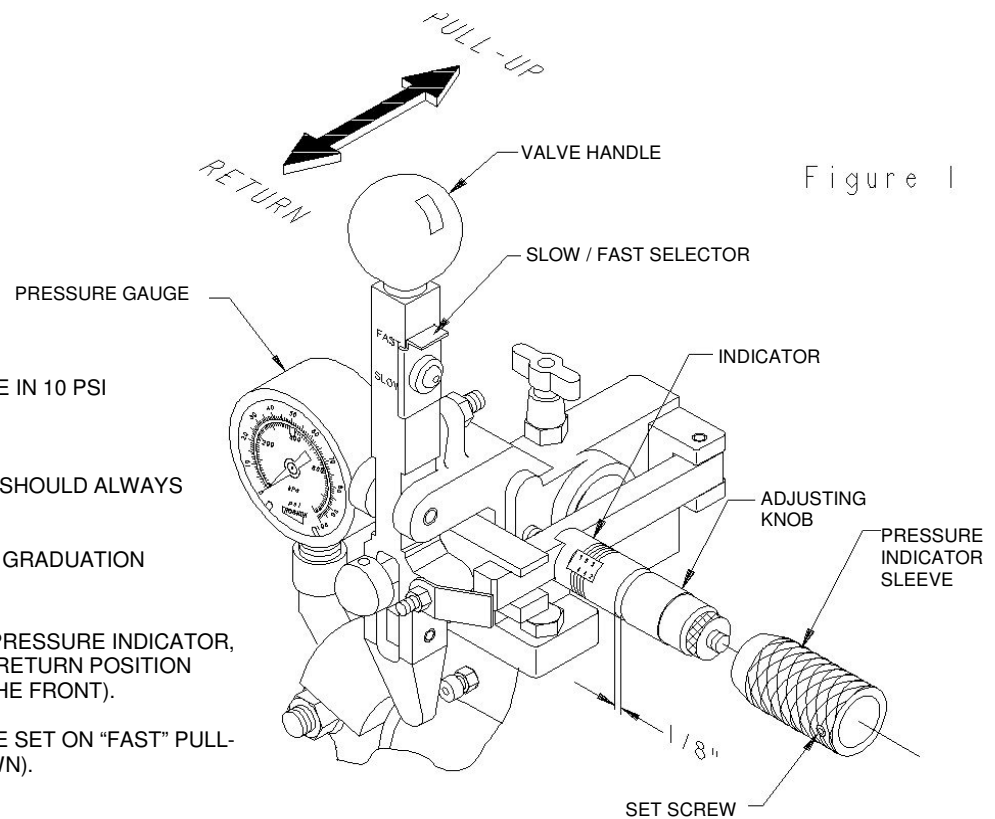


Figure 1

CALIBRATION SET-UP:

NUMBERS SHOWN ON INDICATOR ARE IN 10 PSI GRADUATIONS.

EXAMPLE: 7 = 70 PSI 6 = 60 PSI

PRESSURE INDICATOR CALIBRATION SHOULD ALWAYS BE DONE AT 70 PSI.

USE MIDWAY SPACE BETWEEN EACH GRADUATION LINE FOR 5 PSI GRADUATION.

WHEN CALIBRATING OR ADJUSTING PRESSURE INDICATOR, VALVE HANDLE MUST ALWAYS BE IN RETURN POSITION (PISTON ROD FULLY EXTENDED TO THE FRONT).

SPEED CONTROL SELECTOR MUST BE SET ON "FAST" PULL-UP PRIOR TO CALIBRATION (AS SHOWN).

CALIBRATION PROCEDURE:

REFER TO FIGURE 1 FOR IDENTIFICATION OF EACH PART.

LOOSEN SET SCREW AND REMOVE PRESSURE INDICATOR SLEEVE.

TURN ADJUSTING KNOB CLOCKWISE UNTIL THERE IS A 1/8" GAP BETWEEN ADJUSTING KNOB AND INDICATOR AS SHOWN.

ACTUATE VALVE HANDLE TO THE PULL-UP CYCLE AND OBSERVE PRESSURE GAUGE. PRESSURE SHOULD STOP INCREASING AT 70 PSI.

PULL VALVE HANDLE BACK TO RETURN CYCLE, TURN ADJUSTING KNOB CLOCKWISE OR COUNTERCLOCKWISE TO FINE TUNE PRESSURE GAUGE TO 70 PSI. (BE SURE TO PULL VALVE HANDLE BACK TO ITS RETURN CYCLE POSITION BEFORE EACH ADJUSTMENT IS MADE).

SLIDE PRESSURE INDICATOR SLEEVE BACK OVER ADJUSTING KNOB AND INDICATOR. ALIGN TAPERED FRONT EDGE OF PRESSURE INDICATOR SLEEVE WITHIN THE NUMBER SEVEN (7) GROOVE AND LOCK IT IN PLACE WITH SET SCREW.

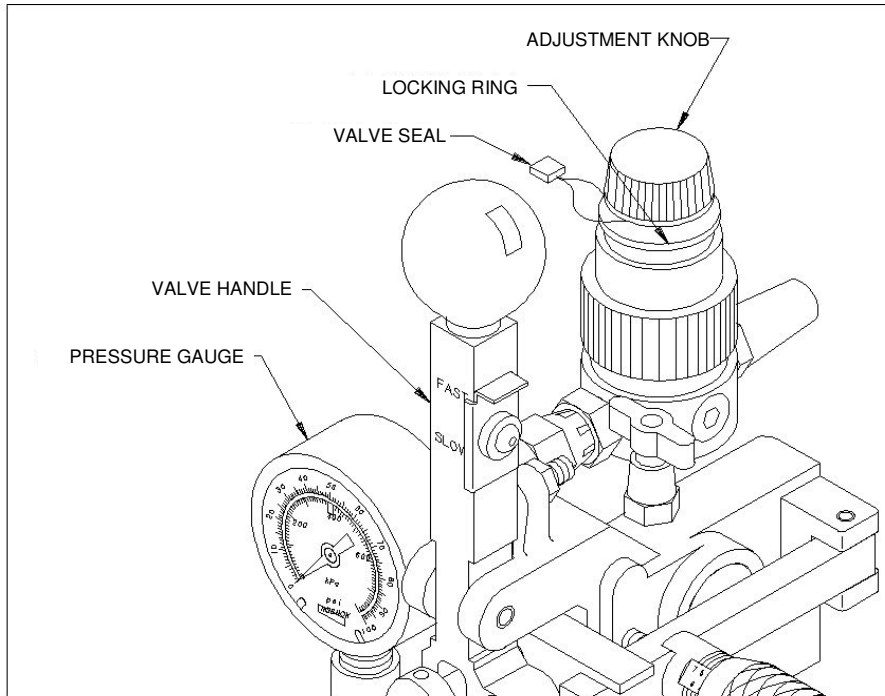
ONCE INDICATOR SLEEVE HAS BEEN LOCKED IN PLACE TO ADJUSTING KNOB, BOTH PARTS CAN BE TURNED COUNTERCLOCKWISE FOR LOWER PRESSURE SETTINGS OR CLOCKWISE TO INCREASE PRESSURE SETTING. WHEN INCREASING PRESSURE, TURN KNOB PAST REQUIRED PRESSURE SETTING ONE (1) OR TWO (2) TURNS THEN BACK TO REQUIRED PRESSURE SETTING.

80 PSI SETTING CAN BE ACCOMPLISHED BY TURNING INDICATOR SLEEVE CLOCKWISE ALL THE WAY UNTIL IT COMES TO A STOP, THEN BACK OFF TWO COMPLETE TURNS.

Holding Pressure Adjustment



S10099 Classic Air Tool



GENERAL:

THE HOLDING PRESSURE REFERS TO THE CONTROLLED PRESSURE IN THE TOOL THAT OCCURS AFTER THE CLAMP HAS BEEN TENSIONED AND THE CONTROL LEVER HAS BEEN POSITIONED TO THE NEUTRAL POSITION. IN THIS POSITION, THE PRESSURE IN THE TOOL BLEEDS DOWN FROM THE PULL PRESSURE TO THE HOLDING PRESURE CONTROLLED BY THE HOLD PRESSURE CONTROL VALVE. THESE PRESSURES ARE READ ON THE PRESSURE GAUGE.

FOR GENERAL USE, THESE TOOLS ARE SET AT 7 - 8 PSI AT THE FACTORY AND THE ADJUSTMENT IS SEALED.

ONCE SET, PULL UP PRESSURE HAS BEEN ACHIEVED AND VALVE HANDLE HAS BEEN PUT IN NEUTRAL POSITION, THE PRESSURE SHOULD DROP RAPIDLY AND THEN REACH SET HOLDING PRESSURE AND STOP THERE.

THE HOLDING PRESSURE IS READ ON THE GAUGE AND IS THE PRESSURE WHICH SHOULD BE SHOWING WHEN A JUNIOR PREFORMED CLAMP IS TO BE ROLLED OVER AND CUT OFF.

ADJUSTMENT OF HOLDING PRESSURE:

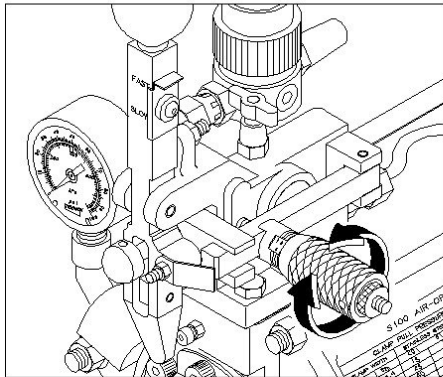
TO ADJUST THE HOLDING PRESSURE, REMOVE THE SEAL, RELEASE THE WHITE LOCKING RING TO UNLOCK THE KNOB AND TURN THE VALVE CONTROL KNOB CLOCKWISE AS FAR AS POSSIBLE. SET THE PULL PRESSURE AT 40 PSI OR HIGHER AND OPERATE THE TOOL (CLAMP NOT REQUIRED). ALLOW THE TOOL TO REACH THE PULL PRESSURE THEN MOVE THE CONTROL VALVE TO NEUTRAL POSITION. NOW, SLOWLY TURN THE ADJUSTMENT KNOB COUNTERCLOCKWISE AND YOU HEAR THE AIR EXHAUST AND OBSERVE THE HOLDING PRESSURE DROP. TURN THE KNOB AS NEEDED TO GET THE PRESSURE TO THE RECOMMENDED SETTING (PAGE 6). PUSH THE WHITE LOCKING RING DOWN TO LOCK THE KNOB, NOW THE TOOL IS READY TO USE. IF THE VALVE DOES NOT HOLD THE PRESSURE, THE VALVE IS DEFECTIVE AND SHOULD BE REPLACED. IT IS RECOMMENDED TO CYCLE THE TOOL A FEW TIMES AND OBSERVE THAT PRESSURES ALWAYS REACH THE LEVEL SELECTED.

TO OPTIMIZE CLAMP CUT-OFF AND CLAMP LOCKING, IT IS RECOMMENDED THAT THE CLAMP HOLD PRESSURES (SHOWN ON PAGE 6) BE USED FOR DIFFERENT CLAMP WIDTHS.

Clamp Application

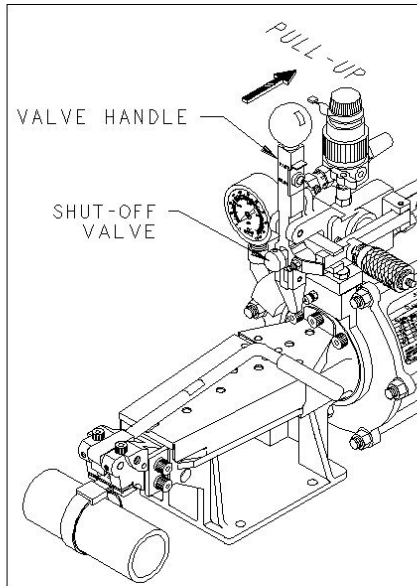


S10099 Classic Air Tool



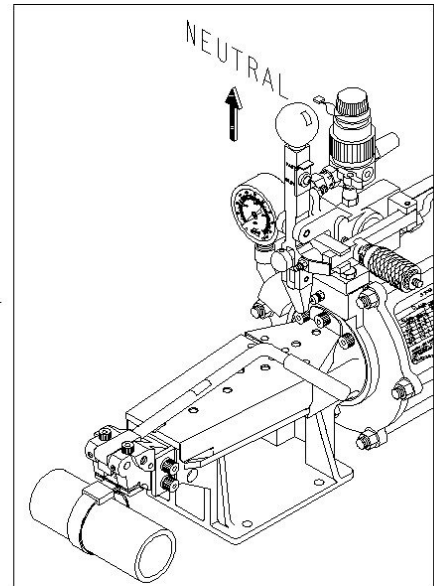
STEP 1

TURN PRESSURE INDICATOR KNOB UNTIL INDICATOR COINCIDES WITH THE PRESSURE REQUIRED FOR THAT PARTICULAR BAND WIDTH AND MATERIAL TYPE. SEE PAGE 6 OR RIGHT SIDE OF TOOL CYLINDER FOR RECOMMENDED PRESSURE SETTINGS.



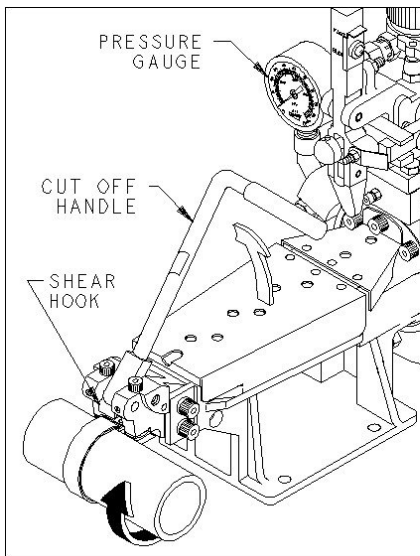
STEP 2

INSERT CLAMP TAIL INTO NOSE OF TOOL WITH BUCKLE UP. PUSH VALVE HANDLE TO PULL-UP POSITION AS SHOWN. (SHOULD TOOL FAIL TO OPERATE, PUSH ON SHUT-OFF VALVE.)



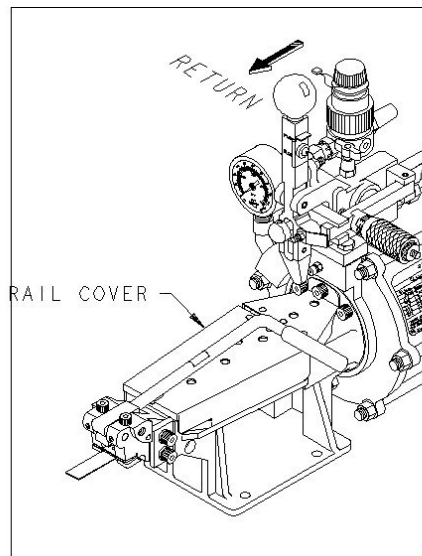
STEP 3

WHEN SHUT-OFF VALVE TRIPS, RETURN VALVE HANDLE TO NEUTRAL POSITION (HALF WAY BETWEEN PULL-UP AND RETURN POSITIONS).



STEP 4

WHEN PRESSURE BLEEDS TO HOLDING PRESSURE AS INDICATED ON PRESSURE GAUGE, ROLL BUCKLE UNDER SHEAR HOOK AND PULL CUT OFF HANDLE.



STEP 5

PULL VALVE HANDLE TO RETURN POSITION TO EJECT TAIL.

NOTE:

WHEN APPLYING OVERSIZED CLAMPS, LIFT UP RAIL COVER, BACK OUT SOCKET HEAD CAP SCREW LOCATED ON TOP OF PISTON ROD HEAD TO CLEAR BAND PATH INSIDE PISTON ROD HEAD FOR MORE THAN ONE GRIP PER CLAMP.

RETURN SCREW BACK TO ITS ORIGINAL POSITION WHEN MULTIPLE GRIPS ARE NO LONGER REQUIRED. THREADED END OF SET SCREW INSIDE PISTON ROD HEAD IS USED TO EJECT CLAMP TAIL SCRAP OUT OF FRONT OF JUNIOR HEAD.

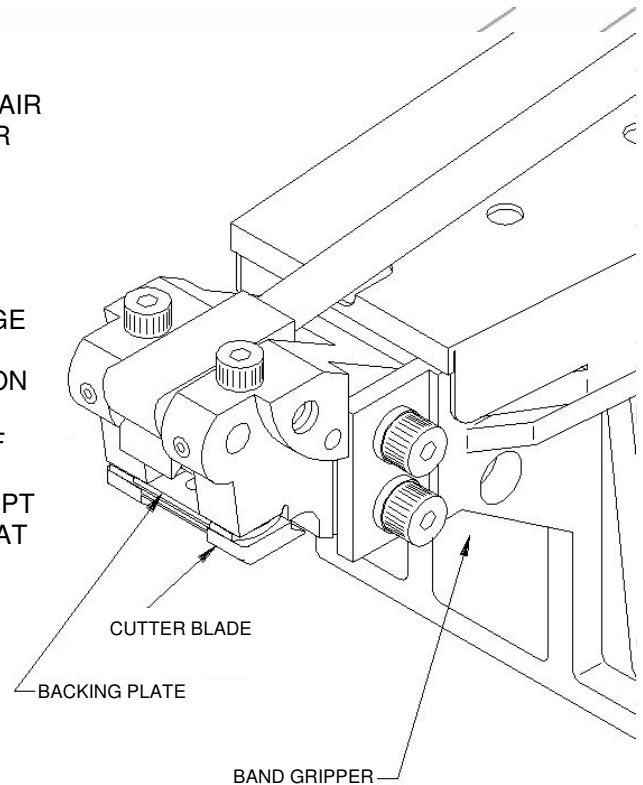
SEE PAGE 6 FOR IMPORTANT ADVICE AND WARNINGS.



PROBLEM	PROBABLE CAUSE	CORRECTION
SHARP OR SCARRED EDGES ON CLAMP. METAL DEPOSITS ON UNDERSIDE OF TAIL AT BUCKLE EDGE. CLAMP TAIL BREAKING BEFORE CLAMPING OPERATION COMPLETED.	LOOSE OR BROKEN CUTTER BLADE / BACKING PLATE. SHARP EDGE ON CUTTER BLADE DUE TO WEAR.	MAKE CERTAIN ALL FASTENERS ARE TIGHT. REPLACE ANY BROKEN OR CHIPPED BLADES. HONE SHARP EDGE TO A SMOOTH RADIUS.
TAIL IS BROKEN AT APPROXIMATELY 45° CLAMP MATERIAL STRETCHED OR THINNED AT BREAK.	PULL-UP PRESSURE SET HIGHER THAN RECOMMENDED.	REDUCE PULL-UP PRESSURE TO THE RECOMMENDED MAXIMUM OR SLIGHTLY LOWER. APPLY CLAMP AND ADJUST IT IF NECESSARY.
CLAMP TAIL BREAKS DURING ROLL-UP.	HOLDING PRESSURE SET HIGHER THAN RECOMMENDED. ROLL-UP IS ATTEMPTED BEFORE PRESSURE HAS DROPPED TO APPROPRIATE LEVEL.	REDUCE HOLDING PRESSURE TO THE RECOMMENDED MAXIMUM OR SLIGHTLY LOWER. APPLY CLAMP AND ADJUST IF NECESSARY. WAIT WITH ROLL-UP UNTIL GAUGE REACHES REQUIRED HOLDING PRESSURE.
CLAMP PULLS IN A JERKY MANNER.	PULL-UP PRESSURE SET LOWER THAN RECOMMENDED.	INCREASE PULL-UP PRESSURE.
	CLAMP NOT INSERTED PROPERLY.	MAKE SURE CLAMP IS STRAIGHT AND LEVEL WHEN INSERTING.
	BAND GRIPPER PIN LOOSE.	TIGHTEN SET SCREW.
	PULL-UP CYLINDER NEEDS LUBRICATION.	CHECK FILTER / LUBRICATION AND ADD OIL IF NECESSARY.
CLAMP PULLS BUT DOES NOT LOCK.	HOLDING PRESSURE SET HIGHER THAN RECOMMENDED.	REDUCE HOLDING PRESSURE TO THE RECOMMENDED MAXIMUM OR SLIGHTLY LOWER. APPLY CLAMP AND ADJUST IF NECESSARY.
CLAMP TAIL SLIPS IN BAND GRIPPER LEVER.	BROKEN OR WORN TEETH ON BAND GRIPPER LEVER.	REPLACE BAND GRIPPER LEVER.
	SPRING STRETCHED OUT.	REPLACE SPRING.
	TRIPPER PLATE STUCK DUE TO DIRT OR LACK OF LUBRICATION.	CLEAN AND/OR RE-LUBRICATE.
CLAMP TAIL CATCHES AS TOOL RESETS.	CLAMP TAIL DOES NOT ALIGN PROPERLY DURING RESET.	MOVE VALVE HANDLE TO PULL-UP POSITION. REACH UNDER PISTON ROD AND LOCATE BAND GRIPPER LEVER. ROTATE LEVER TOWARD CLAMP HEAD AND ALLOW TAIL TO FALL FROM TOOL. IF TAIL REMAINS STUCK, USE PLIERS TO GRASP TAIL AND CAREFULLY REMOVE. NEVER POSITION FINGERS ANYWHERE BUT ON GRIPPER LEVER AND KEEP VALVE HANDLE IN PULL-UP POSITION.
TOOL DOES NOT CUT OFF CLAMP.	LOOSE OR BROKEN CUTTER BLADE.	TIGHTEN OR REPLACE CUTTER BLADE.
	IMPROPER HOLDING PRESSURE	ADJUST HOLDING PRESSURE TO RECOMMENDED LEVEL.
	NO OR LOWER THAN RECOMMENDED HOLDING PRESSURE.	ADJUST CHECK VALVE TO RECOMMENDED HOLDING PRESSURE.
TOOL TAKES EXCESSIVE TIME FOR CLAMP PULL-UP.	AIR LEAK FROM LOOSE CONNECTION OR WORN PARTS.	TIGHTEN LOOSE CONNECTION AND / OR REPLACE WORN PARTS.
CLAMP TAIL CANNOT BE INSERTED INTO TOOL.	TRIPPER PLATE MAY BE BROKEN OR BINDING.	ADJUST OR REPLACE TRIPPER PLATE.

NOTE: IF PROBLEM PERSISTS OR CANNOT BE IDENTIFIED. CALL BAND-IT. 303-320-4555.

1. FOR BEST RESULTS AND PROPER FUNCTIONING OF THE AIR TOOL, A FILTER / LUBRICATOR MUST BE USED ON THE AIR SUPPLY OR IN LINE WITHIN 30 INCHES OF THE AIR TOOL. THE WARRANTY IS VOIDED IF A FILTER / LUBRICATOR IS NOT USED.
2. BEFORE USING AIR TOOL, CHECK TO SEE THAT THE CUTTER BLADE AND BACKING PLATE ARE FULLY TIGHTENED. LOOSE BOLTS CAN EASILY CAUSE BREAKAGE OF BLADE AND BACKING PLATE.
3. CLEAN GRIPPER OCCASIONALLY. PARTICLES AND DIRT ON THE GRIPPER LEVER CAN CAUSE IT TO SLIP OFF THE CLAMP TAIL. TO REMOVE GRIPPER LEVER, SLACKEN OFF SET SCREW AND TAP OUT PIN.
4. CUTTER BLADE AND BACKING PLATE EDGES MUST BE KEPT CLEAN AND FREE OF METAL SHAVINGS. HONE SMOOTH AT FIRST SIGN OF CLAMP GOUGING.



THE BAND-IT S10099 AIR TOOL, ALTHOUGH DURABLE, DOES NEED PERIODIC MAINTENANCE AND REPAIR. IF THIS TOOL NEEDS MINOR REPAIR OR COMPLETE OVERHAUL (LIST BELOW), IT SHOULD BE RETURNED TO BAND-IT IN DENVER, COLORADO.

MINOR REPAIR:

1. TEST AND INSPECT TOOL TO DETERMINE SOURCE OF PROBLEM.
2. CLEAN EXTERIOR OF TOOL.
3. REPLACE WORN OR DAMAGED, EXTERNAL EXPENDABLE PARTS.
4. ADJUST, TEST AND INSPECT.

REPLACE CUTTER BLADE AND BACKING PLATE AS KIT J93099.
REPLACE GRIPPER CLOSING SPRING AND BAND GRIPPER AS KIT S45199.

PARTS REPLACED ARE INVOICED AT CURRENT PART PRICES.

OVERHAUL:

1. TOTALLY DISMANTLE TOOL AND CLEAN ALL PARTS.
2. REFINISH EXTERNAL PARTS SUCH AS CASTINGS, CYLINDER, ETC.
3. INSPECT ALL PARTS FOR WEAR AND DAMAGE. REPLACE AS NEEDED.
4. REPLACE ALL EXPENDABLE PARTS SUCH AS GASKETS AND O-RINGS.
5. REASSEMBLE, ADJUST, TEST AND INSPECT.

EXPENDABLE PARTS REPLACED AT NO EXTRA CHARGE.
ALL OTHER PARTS REPLACED ARE INVOICED AT CURRENT PART PRICES.

Maintenance List Warranty



S10099
Classic Air Tool

MAINTENANCE CHECK LIST

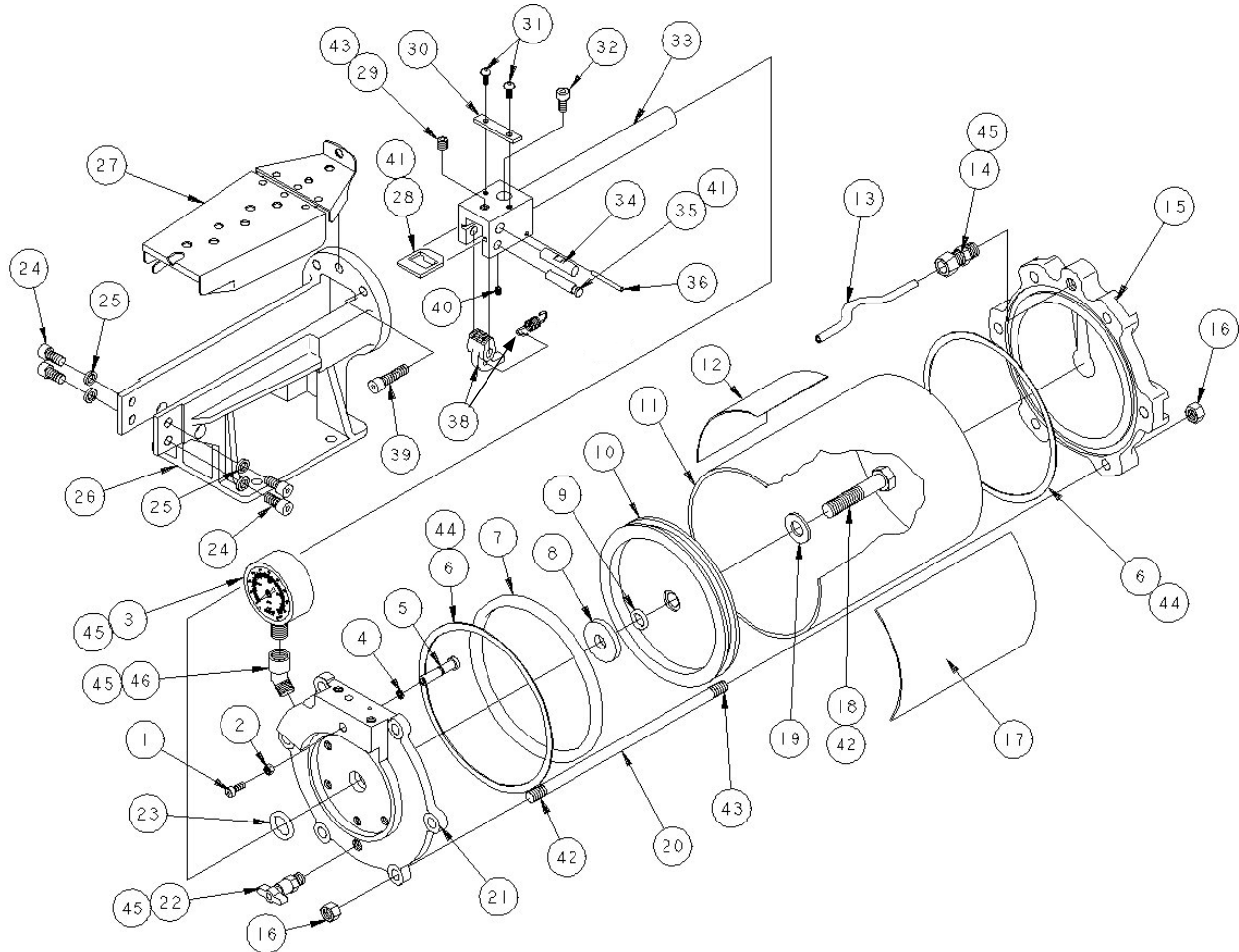
COMPONENT	CHECK	ACTION	FREQUENCY
CLAMP HEAD	CHECK FOR LOOSE MOUNTING SCREWS.	TIGHTEN ALL SCREWS AND FASTENERS.	DAILY
CUTTER BLADE AND BACKING PLATE	CHECK TO SEE IF BLADE IS LOOSE OR HAS ANY BROKEN OR CHIPPED EDGES.	TIGHTEN ALL SCREWS AND FASTENERS. REPLACE IF NECESSARY.	DAILY
FILTER / LUBRICATOR	CHECK FOR BUILD-UP OF DIRT, ETC. CHECK FOR LOW, CONTAMINATED OR DISCOLORED LUBRICANT.	DRAIN AND CLEAN WITH SOAP AND WATER. REFILL WITH DTE 24 HYDRAULIC OIL.	EVERY 2000 CLAMPS
ECCENTRIC LEVER	CHECK FOR BUILD-UP OF DIRT, ETC., IN TEETH.	REMOVE AND CLEAN WITH SMALL POINTED OBJECT, KNIFE BLADE, WIRE BRUSH.	EVERY 2000 CLAMPS
CYLINDER	CHECK FOR BUILD-UP OF DIRT, CONTAMINANTS ON PISTON ROD SEALS.	CLEAN WITH SOAP AND WARM WATER.	6 MONTHS
TRIPPER PLATE	CHECK FOR BUILD-UP OF DIRT, CONTAMINANTS, ETC.	CLEAN AND APPLY TYPE G-N LUBRICANT OR EQUIVALENT.	6 MONTHS
AIR EXHAUST MUFFLERS	CHECK FOR BUILD-UP OF DIRT, CONTAMINANTS, ETC.	REMOVE AND CLEAN WITH NON-FLAMMABLE DEGREASER.	6 MONTHS

Refer to website for warranty information: <http://www.band-it-idex.com/warranty.html>

Repair Parts List Cylinder Assembly



S10099 Classic Air Tool



ITEM	PART NO.	DESCRIPTION	QTY.	ITEM	PART NO.	DESCRIPTION	QTY.
1	J65687	SCREW, SOC. HEAD CAP #10-32 X 1/2	1	24	S10487	SCREW, SOC. HEAD CAP, 5/16-18X5/8	4
2	J65087	NUT, HEX, #10-32	1	25	J66587	WASHER, LOCK, 5/16 ID	4
3	S14487	GAUGE, LIQUID 0-100 PSI 1/4 NPT	1	26	S21789	BASE	1
4	J63387	O-RING, .188 ID X .062 THICK	1	27	S45888	SLIDE COVER	1
5	J61587	CONTROL PLUNGER	1	28	S45087	TRIPPER PLATE, BAND GRIPPER	1
6	J66687	GASKET, CYLINDER	2	29	J65487	SCREW, SET, 5/16-24 X 3/8 LONG	1
7	J63287	O-RING, 5.437 ID X .295 THICK	1	30	J61967	PLATE, ROD GUIDE	1
8	S44887	SPACER, STROKE LIMITING	1	31	S48087	SCREW, BUTTON HEAD, #10-32 X 3/8	2
9	S45587	O-RING, .437 ID X .103 THICK	1	32	J67287	SCREW, SOC. HEAD CAP, 1/4-28 X 1/2	1
10	S44687	PISTON	1	33	S44787	PISTON ROD	1
11	J60767	CYLINDER	1	34	J66487	PIN, ECCENTRIC LEVER BACK-UP	1
12	J92687	DECAL, CAUTION	1	35	S21587	PIN, PIVOT, BAND GRIPPER	1
13	S14887	TUBING, COPPER, 1/4 OD	1	36	J61187	PIN SPRING, 1/8 X 1 3/8 LONG	1
14	S11687	FITTING, COPPER TUBE 1/4 X 1/4 NPT	1	38	S45199	BAND GRIPPER KIT	1
15	S47988	COVER, REAR CYLINDER	1	39	J90987	SCREW, SOC. HEAD CAP, 5/16-18X7/8	6
16	J67687	NUT, HEX, 3/8-24	12	40	J68187	SCREW, SET, #8-32 X 1/8 LONG	1
17	S60287	DECAL, MAXIMUM SETTINGS	1	41	S25787	LUBRICANT, MOLY PASTE	-
18	S44987	BOLT, HEX HEAD, 1/2-13 X 2.5 LG.	1	42	C00387	LOCKING COMPOUND, HIGH STRENGTH	-
19	S45687	WASHER, FLAT 17/32 ID X 1-1/16 OD	1	43	S25687	LOCKING COMPOUND, MEDIUM STRENGTH	-
20	J62187	CYLINDER BOLT	6	44	S39787	GASKET AND JOINT SEALANT	-
21	J90187	COVER, FRONT CYLINDER	1	45	S25587	COMPOUND, TEFLON SEALANT	-
22	J92187	DRAIN COCK, 1/8 NPT	1	46	S11287	FITTING, 45, 1/4 X 1/4 NPT	1
23	J63187	O-RING, .750 ID X .125 THICK	1				

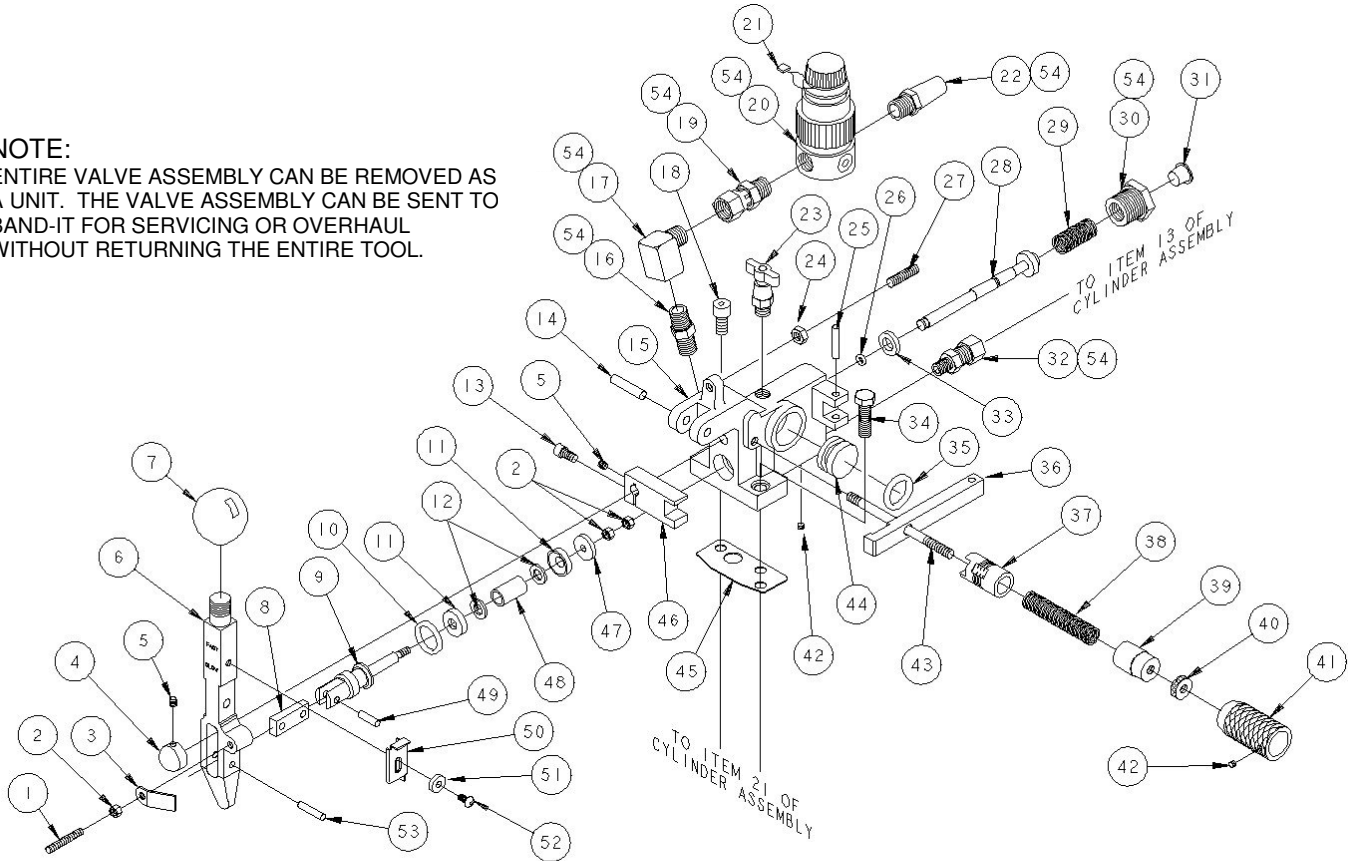
Repair Parts List Valve Assembly



S10099 Classic Air Tool

NOTE:

ENTIRE VALVE ASSEMBLY CAN BE REMOVED AS A UNIT. THE VALVE ASSEMBLY CAN BE SENT TO BAND-IT FOR SERVICING OR OVERHAUL WITHOUT RETURNING THE ENTIRE TOOL.

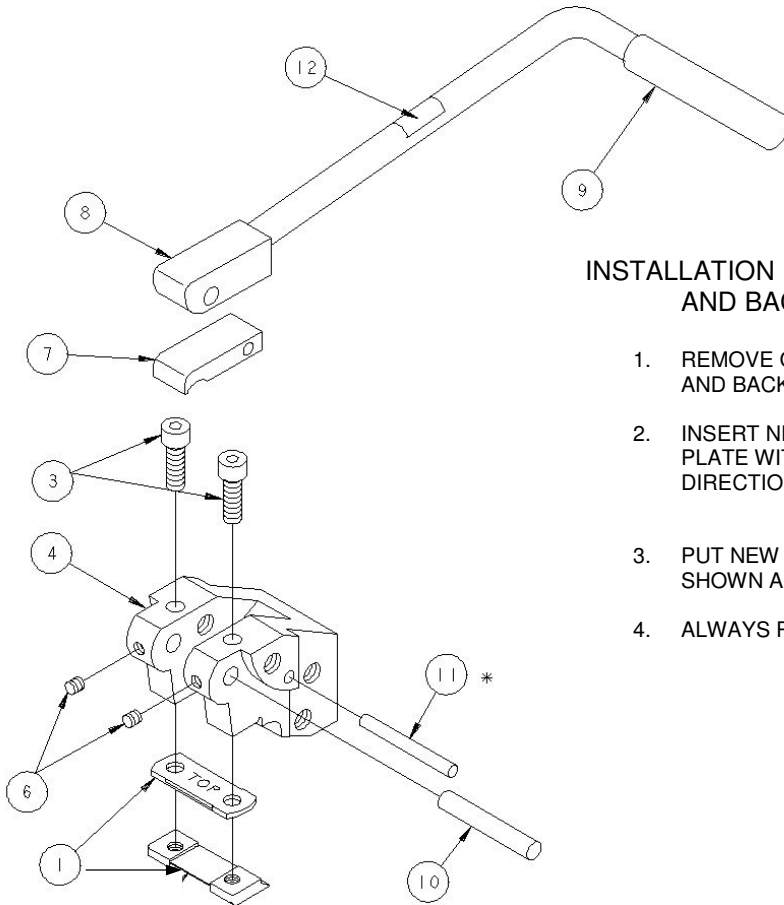


ITEM	PART NO.	DESCRIPTION	QTY.	ITEM	PART NO.	DESCRIPTION	QTY.
1	J67887	SCREW, SET, #10-32 X 1-1/4	1	28	S10787	STEM, SHUT-OFF VALVE	1
2	J65087	NUT, HEX, #10-32	3	29	J63787	SPRING, COMP. .531 DIAM X 1.25 LG	1
3	J91687	BRACKET, COCKING	1	30	J66887	BUSHING, BRASS 1/4 NPT	1
4	S10687	CUP, SHUT OFF VALVE	1	31	S42387	PLUG, PLASTIC CAP, 1/4 NPT	1
5	J64887	SCREW, SET, #10-32 X 3/8	2	32	S11887	FITTING, COPPER TUBE, 1/4 X 1/8 NPT	1
6	S19187	HANDLE, VALVE	1	33	J63487	WASHER, NEOPRENE	1
7	J92587	HANDLE, PLASTIC BALL	1	34	J92387	BOLT, HEX, 5/16-18 X 1" LONG	1
8	J61487	LINK, CONTROL VALVE	1	35	J63187	O-RING, .750 ID X .125 THICK	1
9	S10587	VALVE STEM	1	36	J61687	VALVE HOOK	1
10	S10887	O-RING, .737 ID X .103 THICK	1	37	S23387	INDICATOR, PRESSURE SETTING	1
11	J63587	VALVE CUP	2	38	S23087	SPRING, COMP. 1/2 DIA X 2.31 LONG	1
12	J61387	WASHER, VALVE SPACER	2	39	S23287	KNOB, ADJUST PRESSURE INDICATOR	1
13	J64987	SCREW, SOC. HEAD CAP, #10-32 X 3/4	1	40	J62787	LOCKING KNOB, PRESSURE IND.	1
14	J64587	PIN, SPRING, 1/4 X 1-1/8 LONG	1	41	S23487	SLEEVE, PRESSURE INDICATOR	1
15	J60187	VALVE HEAD	1	42	J68187	SCREW, SET, #8-32 X 1/8	2
16	S37387	NIPPLE, HEX, 1/4 NPT	1	43	S23187	POST, PRESSURE INDICATOR	1
17	S48387	ELBOW, 90° 1/4 NPT	1	44	J62887	TRIP PISTON	1
18	S10487	SCREW, SOC. HEAD CAP, 5/16-18 X 5/8	1	45	J66787	GASKET, VALVE HEAD	1
19	G00689	FITTING, SWIVEL, 1/4 X 1/4 NPT	1	46	J61787	VALVE ARM	1
20	S10287	VALVE, RELIEF, 1/4 NPT	1	47	J61287	WASHER, VALVE CUP	1
21	S11387	CHECK VALVE SEAL	1	48	J63687	SPACER, CONTROL VALVE	1
22	S11787	MUFFLER, AIR EXHAUST, 1/4 NPT	1	49	J64387	PIN, SPRING, 3/16 X 5/8 LONG	1
23	J92187	DRAIN COCK, 1/8 NPT	1	50	J90487	SHIFT SLIDE, SLOW AND FAST PULL	1
24	J64687	NUT, HEX, 1/4-28	1	51	J91487	WASHER, NEOPRENE AND STEEL	1
25	J64487	PIN, SPRING, 3/16 X 1" LONG	1	52	J91387	SCREW, BUTTON HEAD, #10-32 X 1/2	1
26	J63387	O-RING, .188 ID X .062 THICK	1	53	J64287	PIN, SPRING, 3/16 X 7/8 LONG	1
27	J64787	SCREW, SET, 1/4-28 X 1"	1	54	S25587	COMPOUND, TEFLON SEALANT	-

Repair Parts List Junior Clamp Head

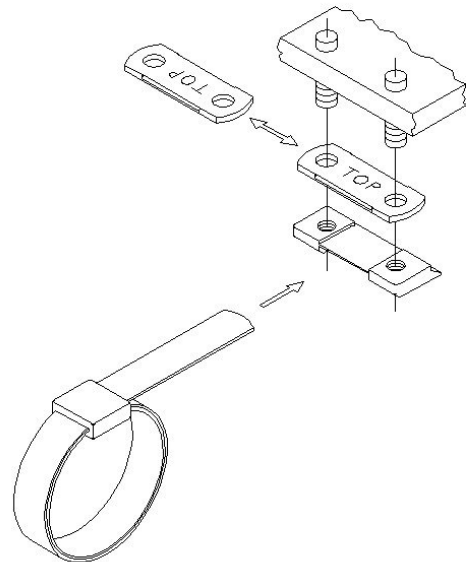


S10099 Classic Air Tool



INSTALLATION INSTRUCTIONS FOR CUTTER BLADE AND BACKING PLATE

1. REMOVE OLD CUTTER BLADE SCREWS, CUTTER BLADE AND BACKING PLATE.
2. INSERT NEW SCREWS AND PUT ON NEW BACKING PLATE WITH WORD "TOP" FACING UP (EITHER DIRECTION) AS SHOWN.
3. PUT NEW CUTTER BLADE ON WITH SLOT FACING UP AS SHOWN AND TIGHTEN SCREWS.
4. ALWAYS REPLACE ALL PARTS AS A KIT.

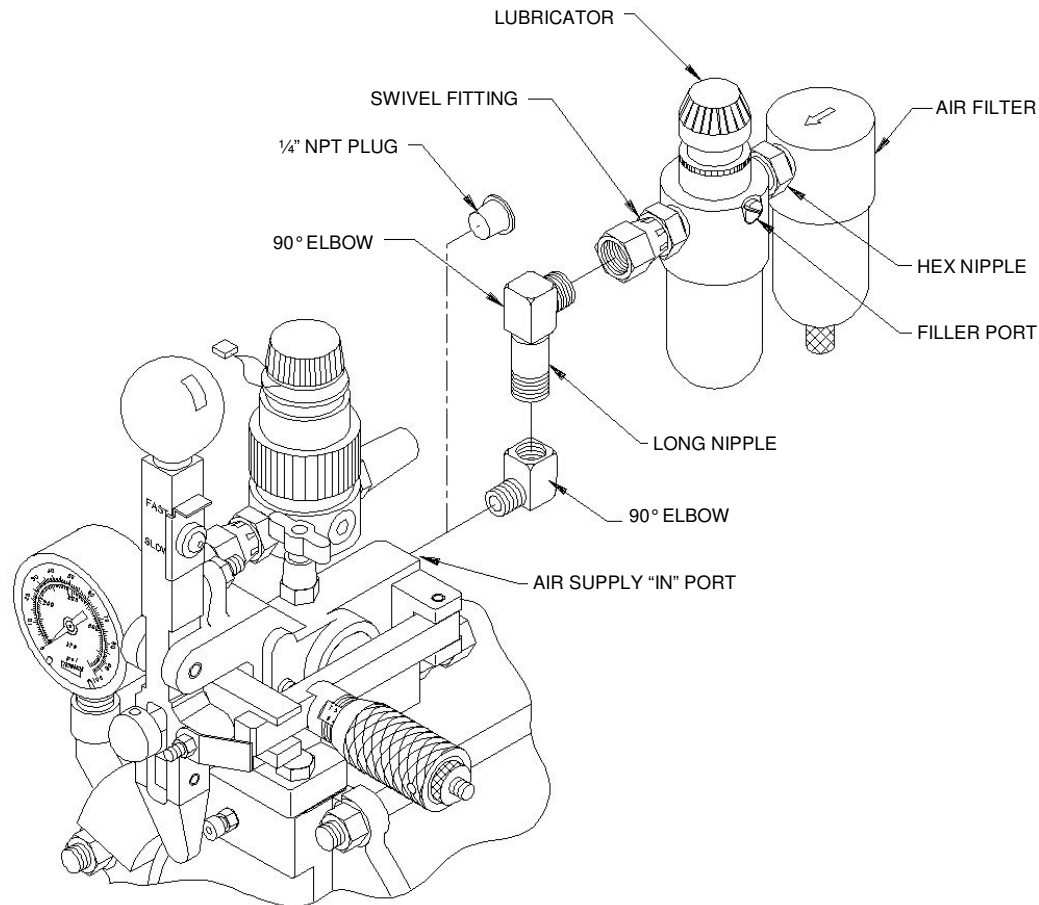


ITEM	PART NO.	DESCRIPTION	QTY.
1	J93099	CUTTER / BLADE KIT	1
3	S18787	SCREW, SOC. HEAD CAP, 1/4-28 X 1.75	2
4	S51287	HEAD, JR. PREFORMED CLAMP	1
6	J64887	SCREW, SET, #10-32 X 3/16	2
7	J00587	SHEAR HOOK	1
8	S11589	HANDLE ASSEMBLY	1
9	S18487	GRIP, HANDLE COVER	1
10	S52987	PIN, PIVOT, CAM	1
*11	J90887	PIN, PIVOT, SHEAR HOOK	1
12	S18687	DECAL, WARNING	1

KITS

-	J93099	STANDARD CUTTER BLADE/ BACKING PLATE	-
---	--------	--------------------------------------	---

* SHEAR HOOK PIVOT PIN TO BE RETAINED BY USING MEDIUM STRENGTH BLUE LOCTITE COMPOUND 242 OR EQUIVALENT.



INSTRUCTIONS

1. REMOVE 1/4" NPT PLUG FROM AIR SUPPLY "IN" PORT.
2. ASSEMBLE 90° ELBOW MALE END INTO FEMALE END OF AIR SUPPLY "IN" PORT. BE SURE FEMALE END OF 90° ELBOW IS IN DIRECTION SHOWN AFTER ASSEMBLY.
3. USE OPEN FACE WRENCH ON 90° ELBOW TO ASSEMBLE MALE END OF LONG NIPPLE SUB-ASSEMBLY INTO ASSEMBLED 90° ELBOW FEMALE PORT. BE SURE MALE END OF 90° ELBOW IS FACING STRAIGHT BACK IN CENTER LINE OF PULL-UP CYLINDER AS SHOWN.
4. ASSEMBLE SWIVEL FITTING OF FILTER / LUBRICATOR SUB-ASSEMBLY SHOWN TO MALE END OF ASSEMBLED 90° ELBOW. BE SURE THAT FILTER AND LUBRICATOR ARE STRAIGHT UP AND DOWN.

NOTE:

FILTER AND LUBRICATOR SUB-ASSEMBLY MAY BE ASSEMBLED AWAY FROM TOOL, NO MORE THAN 30" FROM AIR SUPPLY "IN" PORT. FILTER AND LUBRICATOR MUST BE IN DIRECT LINE WITH TOOL, NO OTHER HOOKUPS ALLOWED BETWEEN FILTER / LUBRICATOR AND TOOL.

PRIOR TO HOOKING UP AIR SUPPLY TO TOOL, UNSCREW THE TWO FILLER PORT SCREWS ON OPPOSITE SIDE OF EACH OTHER AND FILL BOWL HALF WAY WITH DTE 24 HYDRAULIC OIL PROVIDED WITH KIT. ADJUST DRIP RATE TO ONE DROP FOR EVERY 6 TO 7 CYCLES.

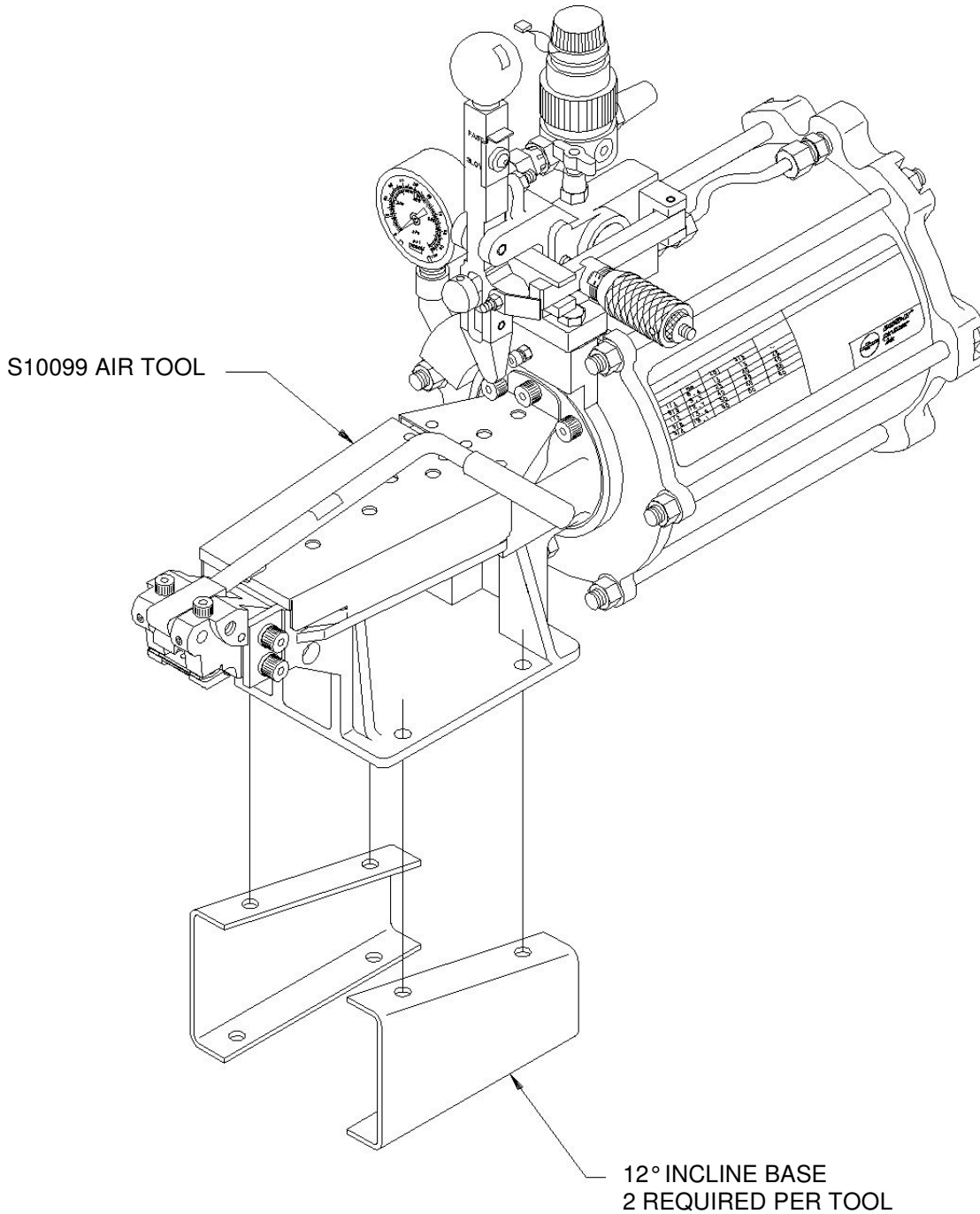
TO DRAIN AIR FILTER, TURN KNURLED KNOB COUNTERCLOCKWISE (IN).

USE OF THE S10099 AIR TOOL WITHOUT A FILTER / LUBRICATOR VOIDS THE WARRANTY.

12° Incline Base



S10099 Classic Air Tool



NOTES:
INCLINE BASE MUST BE FIRMLY SECURED TO WORK BENCH.
USE 5/16" DIAMETER FASTENING HARDWARE (NOT SUPPLIED WITH BASE).
USE MOUNTING TEMPLATE (PAGE 5) FOR HOLE LOCATIONS.

