

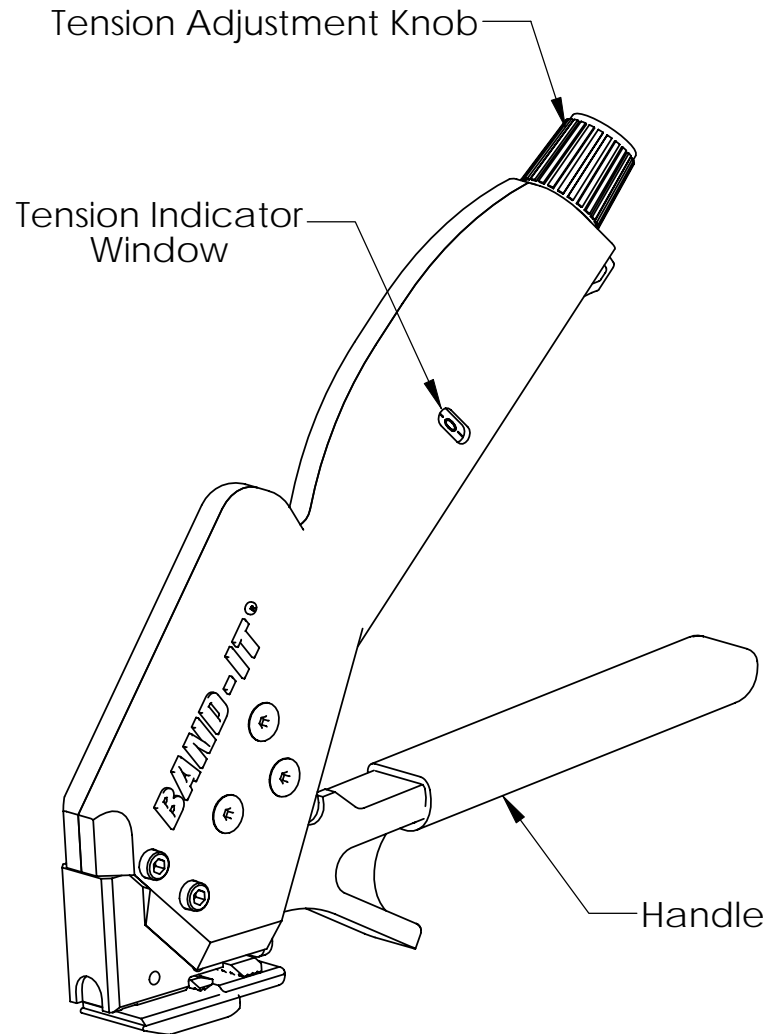
Warning:

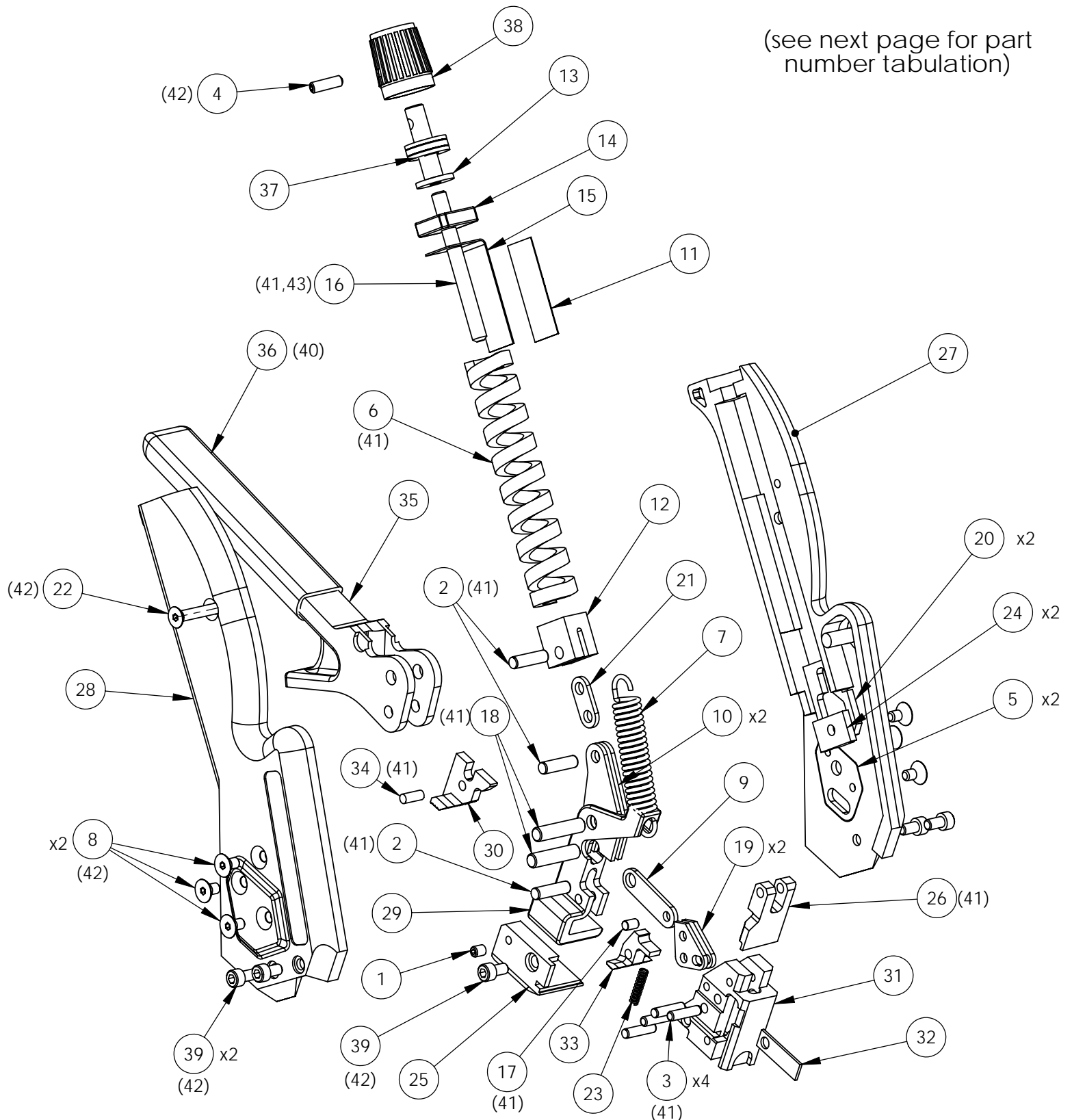
Always wear safety glasses when operating hand tool.

Instructions:

1. Tool is designed to accept 5/16" and 1/2" wide coated and uncoated ties.
2. Turn tension adjustment knob until desired tension setting is displayed in tension indicator window. Space between the numbers counts as one-half setting. See step 7.
3. Extend handle open to release gripping mechanism and insert clamp tail into tool through side load entry.
4. Squeeze handle repeatedly to tighten band around object. Be sure to release handle completely to use full pull-up stroke of tool. Buckle must be secure against the tool head. Once the preset tension has been reached, the handle will no longer release completely.
5. To cut off excess clamp tail, squeeze handle one last time.
6. The tool must be reset by extending the handle out until it snaps into place. The tool will now be ready to apply the next clamp.
7. Tension Setting Range:

| | |
|--------------------------|-----------|
| .270" (6.9mm) Multi-Lok | 1 - 5 1/2 |
| .470" (11.9mm) Multi-Lok | 1 - 6 1/2 |







| ITEM NO. | PART NUMBER | DESCRIPTION | QTY |
|----------|-------------|------------------------------------|-----|
| 1 | A02887 | SCREW, SET, #6-32 X .188 L | 1 |
| 2 | A73587 | PIN, 5/32 DIA X .562 LONG | 3 |
| 3 | A84487 | PIN, 1/8DIA X .50 LONG | 4 |
| 4 | A85687 | SCREW, SET, #6-32 X .473 L | 1 |
| 5 | A91477 | BODY PLATE, FRONT/SIDE LOAD TOOL | 2 |
| 6 | A91687 | SPRING, DIE, 3.0L EXTRA HEAVY | 1 |
| 7 | A91787 | SPRING, EXTENSION, 3/8 X 1.5" L | 1 |
| 8 | A91987 | SCREW, FLAT, #6-32 X 1/4L | 6 |
| 9 | A92177 | LINK, MIDDLE, CUTOFF | 1 |
| 10 | A92267 | TENSION ARM, FRONT/SIDE LOAD TOOL | 2 |
| 11 | A92387 | DECAL, TENSION INDICATOR | 1 |
| 12 | A92487 | TENSION PLUNGER | 1 |
| 13 | A92577 | TENSION CAP | 1 |
| 14 | A93487 | BLOCK, TENSION | 1 |
| 15 | A93587 | TENSION INDICATOR | 1 |
| 16 | A94488 | SCREW, SET, #10-24 X 2.0 L | 1 |
| 17 | A94687 | PIN, .125D X .19L | 1 |
| 18 | A94887 | PIN, .188D X .78L | 2 |
| 19 | A94987 | LINK, CUTOFF | 2 |
| 20 | A95387 | TENSION PLATE | 2 |
| 21 | A95487 | TENSION LINK | 1 |
| 22 | A96087 | SCREW, FLAT, #6-32 X 3/4L | 1 |
| 23 | C09587 | SPR, COMP, .12 DIA X .5L | 1 |
| 24 | K57887 | PAD, CENTERING, TENSION ARM | 2 |
| 25 | K83987 | BLADE, CUTOFF | 1 |
| 26 | K84087 | KNIFE, CUTOFF, M503 | 1 |
| 27 | K93487 | BODY, LEFT, STANDARD | 1 |
| 28 | K93687 | BODY, RIGHT, BLACK | 1 |
| 29 | K93788 | PULL UP LEVER, SIDE LOAD | 1 |
| 30 | K93887 | GRIPPER, PULLING | 1 |
| 31 | K94187 | HEAD, SIDE LOAD | 1 |
| 32 | K94287 | KNIFE COVER | 1 |
| 33 | K94387 | GRIPPER, HOLDING | 1 |
| 34 | K97487 | PIN, .125" DIA X .313" L | 1 |
| 35 | K97587 | HANDLE, FRONT/SIDE LOAD TOOL | 1 |
| 36 | M50887 | GRIP,TEXT .437ID X 3.25 LG, YELLOW | 1 |
| 37 | M53287 | BEARING, THRUST, .250 ID X .462 OD | 1 |
| 38 | M53387 | KNOB, ADJUSTMENT, .250 SHAFT | 1 |
| 39 | M54587 | SCREW, CAP, #6-32 X .25 L | 5 |
| 40 | - | ADHESIVE, CYANOACRYLATE | - |
| 41 | - | GREASE, EXTREME PRESSURE | - |
| 42 | - | BLUE LOCTITE (MEDIUM STRENGTH) | - |
| 43 | - | RED LOCTITE (HIGH STRENGTH) | - |

Tools Required:

Hex Keys: 1/16", 7/64"

Parts May Be Required:

Blade: K93987

Cap Screw: M54587

Set Screw: A02887

Special Instructions:

It is critical the knife and blade be assembled with a zero-gap to ensure clean cut-off. Once correctly positioned, use threadlocking compound to prevent parts from shifting during use (allow sufficient time for compound to cure).

Installation Procedure:

1. Set the tool tension to -0-.
2. Back-out set screw (M54587) and cap screw (A02887) - Figure 1.
3. Reposition/replace blade, but do not fully tighten screws yet.
4. Squeeze the handle completely and firmly strike the tension lever against a non-metal surface to actuate the knife - Figure 2 (note: you may also press firmly on the tension lever to actuate the knife - Figure 3).

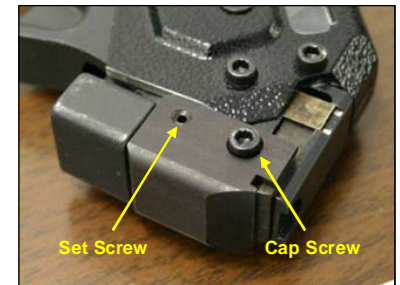


Figure 1



Figure 2



Figure 3

5. The knife is now in the downward position - Figure 4.



Figure 4

Installation Procedure Continued:

6. Open the tension handle slightly so that the knife retracts from its full stroke; it should be overlapping the blade edge - Figure 5.

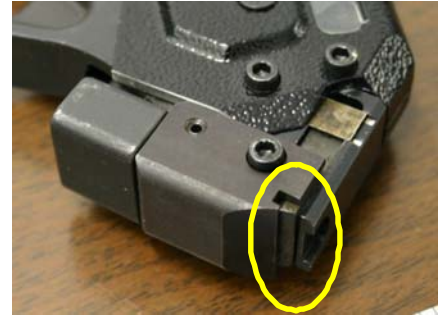


Figure 5

7. Using the edge of a table or bench, force the tension lever against the blade. This will force the blade against the knife and ensure a zero-gap - Figure 6.
8. Tighten the cap screw 1/2 turn past snug.
9. Tighten the set screw 1/2 turn past snug.

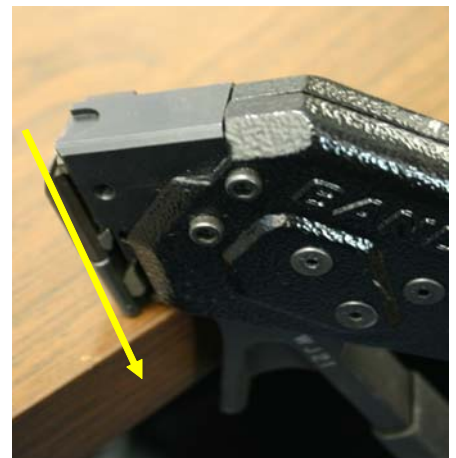


Figure 6