

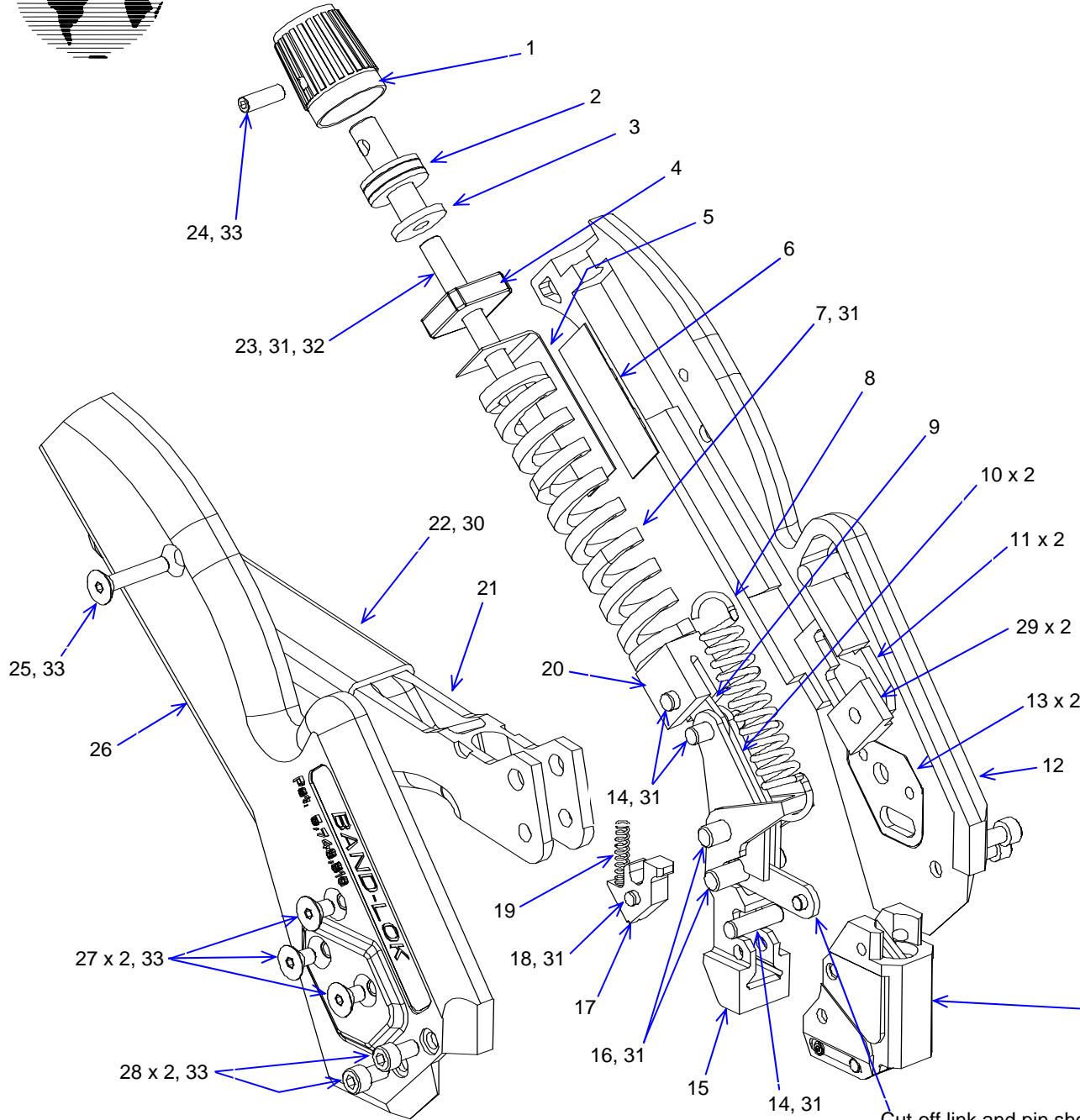


**BAND-IT**<sup>®</sup>  
THE CLAMPING EXPERTS

# Repair Parts List A95079 Band-Lok Tool



WWW.CABLEJOINTS.CO.UK  
THORNE & DERRICK UK  
TEL 0044 191 490 1547 FAX 0044 477 5371  
TEL 0044 117 977 4647 FAX 0044 977 5582  
WWW.THORNEANDDERRICK.CO.UK



Item	Band-It #	Qty	Description
1	M53387	1	Knob, adjustment
2	M53287	1	Bearing, thrust (3 pieces)
3	A92577	1	Cap, tension
4	A93487	1	Block, tension
5	A93587	1	Indicator, tension
6	A92387	1	Decal, tension indicator
7	A91687	1	Spring, die
8	A91787	1	Spring, extension
9	A95487	1	Link, tension
10	A92267	2	Arm, tension
11	A95387	2	Plate, tension
12	K93487	1	Body, left, black
13	A91477	2	Plate, body
14	A73587	3	Pin, dowel, 5/32 x 9/16 lg
15	A91387	1	Lever, pull-up, front load
16	A94887	2	Pin, straight, 3/16 x .780 lg
17	A91187	1	Gripper, pull
18	K97487	1	Pin, .125 x .313 lg
19	A93887	1	Spring, 1/8 x 5/8, 25#
20	A92487	1	Plunger, tension
21	K97587	1	Handle
22	M50787	1	Grip, textured, rust
23	A94488	1	Screw, set, #10-24 x 2.00 lg
24	A85687	1	Screw, set, #6-32 x 7/16 lg
25	A96087	1	Screw, flt-hd, #6-32 x 3/4 lg
26	K93587	1	Body, right, black
27	A91987	6	Screw, flt-hd, #6-32 x 1/4 lg
28	M54587	4	Screw, cap, #6-32 x 1/4 lg
29	K57887	2	Pad, centering
30	-	-	Adhesive, cyanoacrylate
31	-	-	Grease, extreme pressure
32	-	-	Red Loctite (high strength)
33	-	-	Blue Loctite (med. Strength)

See list of tool head parts on reverse side

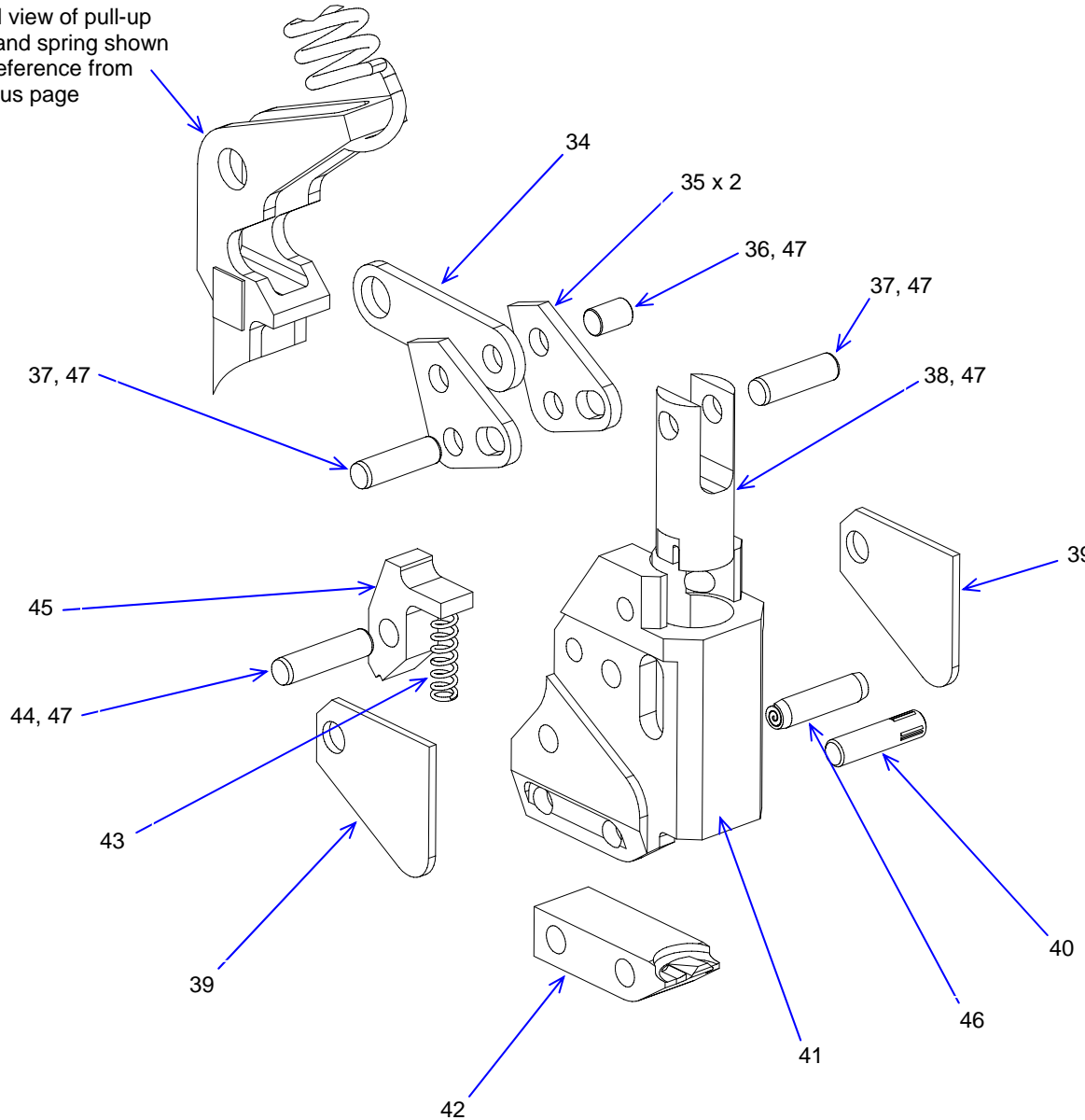
Cut-off link and pin shown as a reference from reverse side



**BAND-IT**<sup>®</sup>  
THE CLAMPING EXPERTS

# Repair Parts List A95079 Band-Lok Tool

Partial view of pull-up lever and spring shown as a reference from previous page



Item	Band-It #	Qty	Description
34	A92177	1	Link, cut-off
35	A94987	2	Lever, cut-off
36	A94687	1	Pin, straight, 1/8 x 3/16 lg
37	M01887	2	Pin, dowel, 1/8 x 7/16 lg
38	A96287	1	Knife, Band-Lok
39	A94187	2	Cover, head
40	A93987	1	Pin, Groove, 1/8 x 1/2 lg
41	A96187	1	Tool head
42	A96387	1	Blade, Band-Lok
43	C09587	1	Spring, 1/8 x 1/2, 13#
44	A84487	1	Pin, dowel, 1/8 x 1/2 lg
45	A91287	1	Gripper, hold
46	A90987	1	Pin, spiral, 1/8 x 1/2 lg
47	-	-	Grease, extreme pressure



**BAND-IT**<sup>®</sup>  
THE CLAMPING EXPERTS

## Operating Instructions A95079 Band-Lok Tool

### **Warning:**

Always wear safety glasses when operating hand tool.

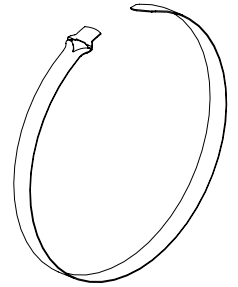
### **Instructions:**

1. Turn tension adjustment knob until desired tension setting is displayed in tension indicator window. Space between numbers counts as one-half setting. See step 6.
2. Extend handle open to release gripping mechanism and insert clamp tail into tool through front load entry.
3. Squeeze handle repeatedly to tighten band around object. Be sure to release handle completely to use full pull-up stroke of tool. Buckle must be secure against the tool head. Once the preset tension has been reached, the handle will no longer release completely.
4. To cut-off excess clamp tail, squeeze handle one last time. Once the band is cut, the handle must be released to separate the tool from the clamp.
5. The tool must be reset by extending the handle out until it snaps into place. The tool will be ready to apply the next clamp.
6. Tension Setting Range:

.312 Band-Lok

0 - 8

Wrap tie around object.  
Insert tail end of tie  
through slot at opposite  
end.



Clamp Tail

