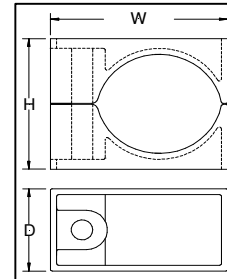


One Hole Cable Clamp-Aluminium Data Sheet

Cast aluminium alloy cable cleats are designed for higher specification projects which call for an all metal product. The cleat is manufactured from an aluminium alloy casting to BS 1490:1988.LM6 for dry industrial use or outdoor unpolluted areas. The product can be epoxy coated for use in harsh environments, such as sea air conditions.



Selection table for One Hole Cable Clamp Aluminium

Part No	Cable Range		Dimensions			Fixing Hole mm	Pack Qty	Item Weight g
	Min Dia. mm	Max Dia. mm	W mm	H mm	D mm			
1G-11N	13	16	44	34	43	M10	50	80
1G-12N	16	19	48	36	43	M10	50	91
1G-13N	19	22	50	38	43	M10	50	98
1G-14N	22	26	53	40	43	M10	50	100
1G-15N	26	33	59	44	43	M10	25	120
1G-16N	33	39	65	50	43	M10	25	132
1G-17N	39	45	71	56	43	M10	25	152
1G-18N	45	51	78	63	43	M10	25	168
1G-19N	51	58	84	73	43	M10	10	202
1G-20N	58	65	91	80	43	M10	10	189
1G-21N	65	71	97	89	43	M10	10	253

Testing Information

The One Hole Aluminium Cleats have been tested in line with the European Standard of 'Cable Cleats for Electrical Installations' BS EN 50368:2003. The results are detailed below:

Properties	BS EN 50368:2003 Classification Clause	Units / Classification	Single Cable Application Test Data
Cleat Type	6.1, 6.1.1	Metallic	-
Impact Resistance	6.2, 6.2.5, 9.3	Very Heavy Classification (>6.7kg @ 300mm)	Pass
Resistance to Electromechanical Force.	6.3, 6.3.2	Refer to Ellis Patents for further details.	Refer to Ellis Patents for further details.
Temperature for Permanent Application	6.4	°C	-40 to 150
Needle Flame Test	6.5, 10.0	Application Time (seconds)	>120
Lateral Load Test	9.2	Newtons (N)	4670
Axial Movement Test	9.5	Newtons (N)	1170