

COLDSHRINK JOINT
 FOR LOW VOLTAGE
 1,2,3, OR 4 CORE
 LEAD SHEATHED AND
 PVC/XLPE OVERSHEATHED
 CABLES UP TO 3.3kV

UNCONTROLLED COPY

TABLE 1				
STRIP DIMENSIONS (mm)				PST
KIT SIZES	A	B	C	
1 & 3.3kV				
1 & 2	25	25	100	80 6109 0383 5
3	25	25	150	80 6109 0383 5
4	25	25	200	78 8018 9941 6
5 & 6	30	30	275	KE 2320 7842 5

3M U.K. PLC. © 2004 3M CENTRE, CAIN ROAD, BRACKNELL BERKS. RG12 8HT, ENGLAND	5	LATEST REQUIREMENT.	ERH	12.10.04
	4	LATEST REQUIREMENT.	ERH	08.09.04
	3	RELEASED.	ADP	25.05.04
	ISSUE	DESCRIPTION / ECO	BY	DATE

ALL STATEMENTS, TECHNICAL INFORMATION AND RECOMMENDATIONS CONTAINED HEREIN ARE BASED ON TESTS WE BELIEVE TO BE RELIABLE. HOWEVER, SINCE THE CONDITIONS OF USE AND THE APPLICATION ARE BEYOND OUR CONTROL THE PURCHASER IS RESPONSIBLE FOR THE PERFORMANCE OF THE SPLICES AND TERMINATIONS MADE IN CONNECTION WITH THE USE OF DATA OR SUGGESTIONS STATED HEREIN.

INSTALLATION INSTRUCTIONS

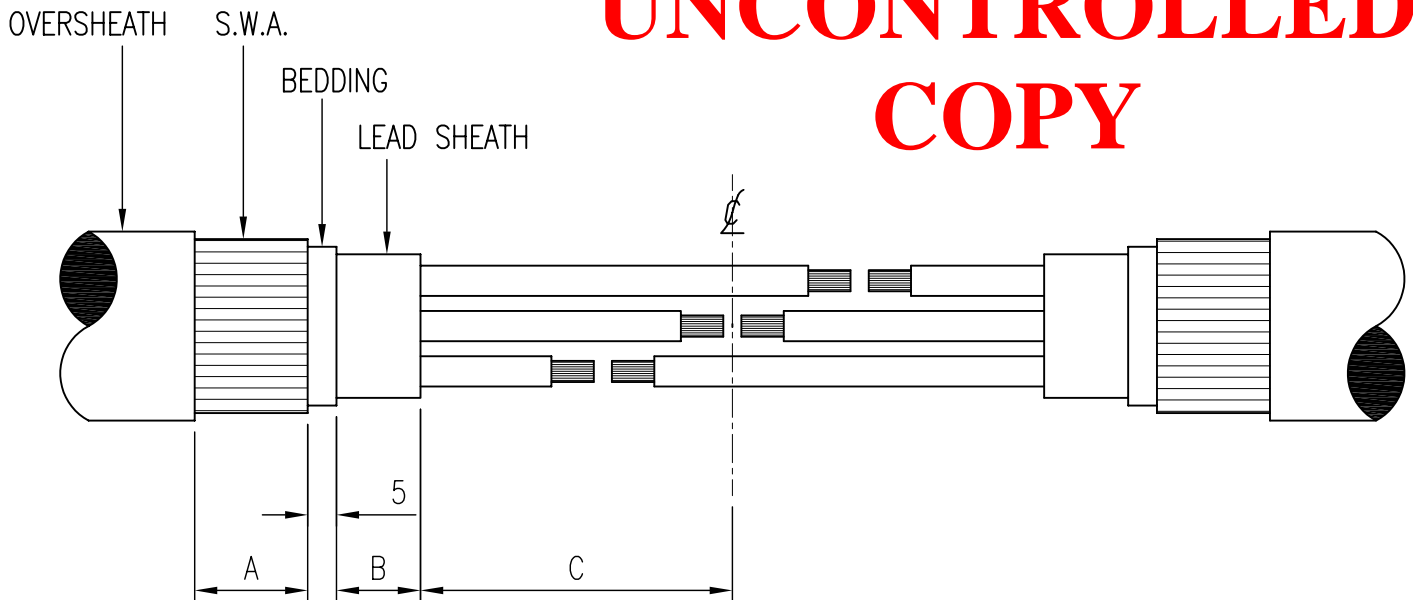
MOD ENG :	DES.ENG. : A.RUSSELL
DRAWN : A.D.PARKER	CHECKED :
CAD FILE : 2205-4	RELEASED :

3M ELECTRICAL PRODUCTS

XE 0091 2205 4

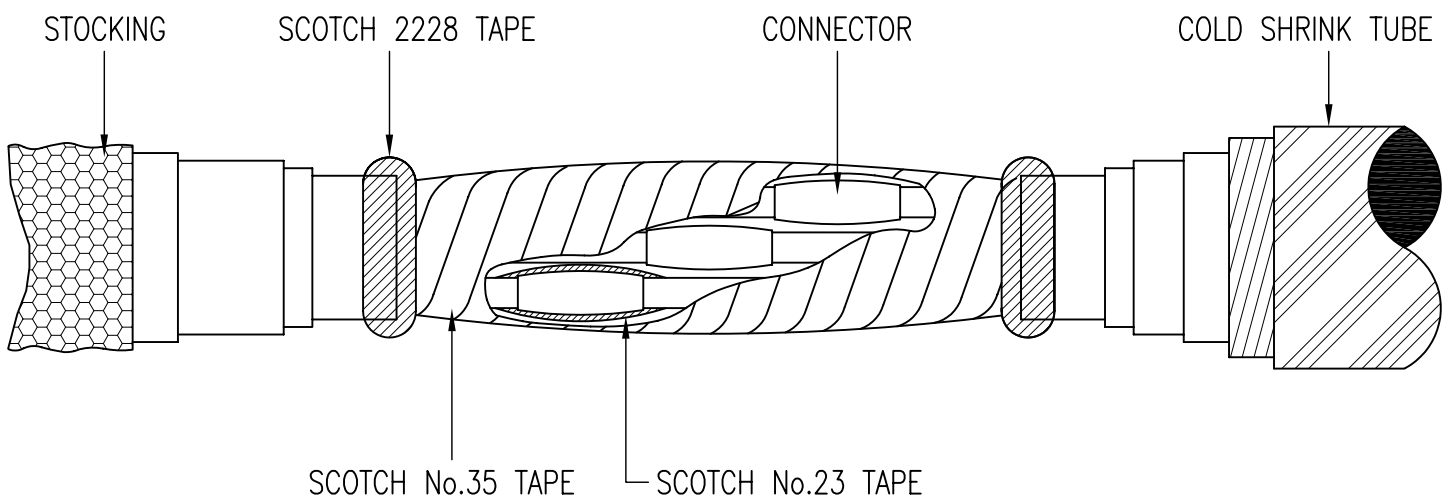
SHEET
 1 OF 4 | A4

UNCONTROLLED COPY



- 1.1 PREPARE CABLES AS PER FIG.1 AND DIMENSIONS IN TABLE 1.
- 1.2 STAGGER CONDUCTORS TO ENSURE A SMOOTH PROFILE.

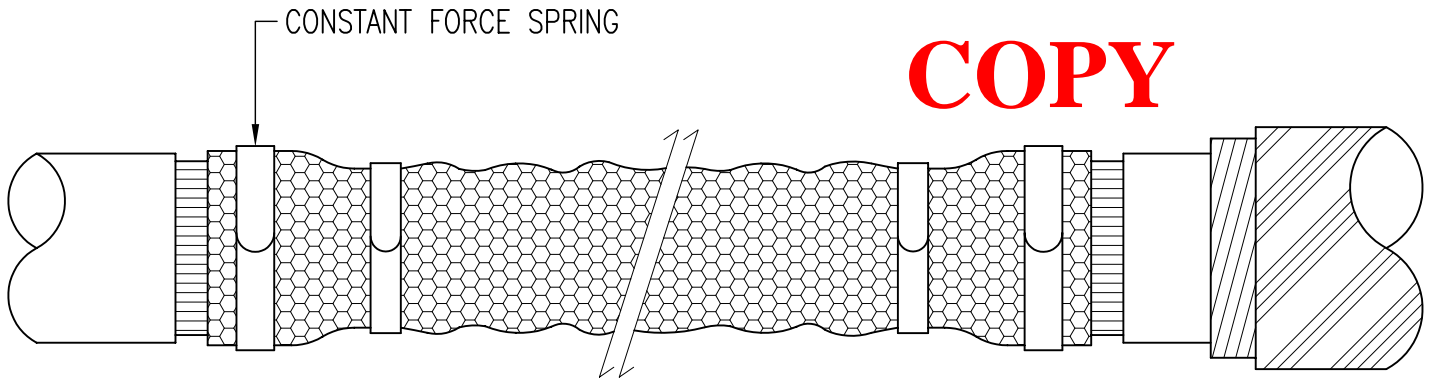
FIG.1



- 2.1 PARK COLD SHRINK TUBE/TUBES WHERE APPLICABLE, AND TINNED COPPER WIRE STOCKING ONTO CABLE.
- 2.2 CRIMP TOGETHER CONDUCTORS, SMOOTH, DEBURR AND CLEAN CONNECTORS.
- 2.3 OVERTAPE EACH CONNECTOR WITH 5 HIGHLY STRETCHED HALF LAPPED LAYERS OF SCOTCH No.23 TAPE EXTENDING 5mm ON EACH SIDE OF THE CONNECTOR ON TO THE CONDUCTOR INSULATION.
- 2.4 SEAL CRUTCH OF CABLE ONTO LEAD SHEATH WITH SCOTCH 2228 TAPE.
- 2.5 APPLY 2 HALF LAP LAYERS OF SCOTCH 35 OR OTHER VINYL TAPE (NOT SUPPLIED) FROM 2228 TO 2228 TAPES.

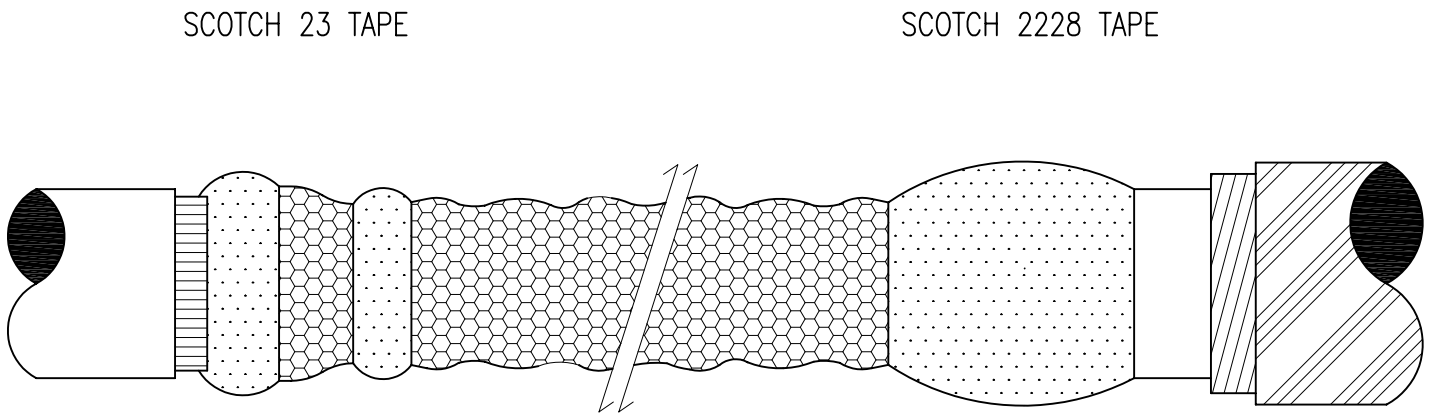
FIG.2

UNCONTROLLED COPY



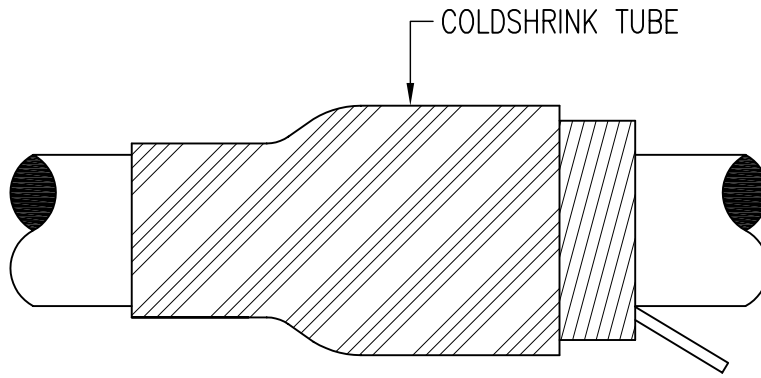
- 3.1 APPLY TINNED COPPER STOCKING ALONG THE LENGTH OF THE JOINT BY PULLING TIGHT FROM SWA TO SWA.
- 3.2 APPLY 4 CONSTANT FORCE SPRINGS AS SHOWN, ONE ON EACH WIRE ARMOUR AND ONE ON EACH LEAD SHEATH. CUT OF ANY EXCESS STOCKING.

FIG.3



- 4.1 OVERTAPE CONSTANT FORCE SPRINGS WITH 2 STRETCHED HALF LAPPED LAYERS OF SCOTCH 23 TAPE ENSURING THE TAPING IS CARRIED OUT IN THE SAME DIRECTION AS THE SPRING.

FIG.4



- 5.1 SHRINK DOWN OUTER PROTECTION COLDSHRINK TUBE(S) OVER THE COMPLETED JOINT STARTING 50mm ON TO THE CABLE OVERSHEATH.
IF SHRINKING DOWN 2 OUTER PROTECTION COLDSHRINK TUBES, START AT THE CABLE OVERSHEATH POSITION AND SHRINK DOWN TOWARDS THE JOINT CENTRE.
- 5.2 APPLY OUTER PROTECTION COLDSHRINK TUBE BY UN-WINDING CORE ANTI-CLOCKWISE.

FIG.5

**UNCONTROLLED
COPY**