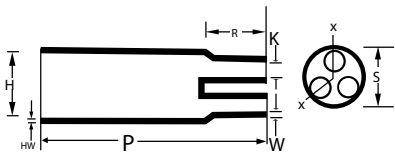
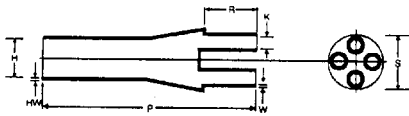


**3M™ Break Outs**



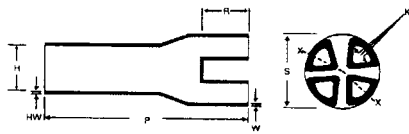
**3M™ SKE 3F / 3 Way Outlet Sleeve Breakouts**

Part No.	Expanded Diameter (as supplied)		Recovered Diameter		Recovered Dimensions (fully shrunk)					Conductor Size Range (Mm²)
	H (Min) mm	K (Min) mm	H (Max) mm	K (Max) mm	S (Nom) mm	P± 10% mm	R± 10% mm	HW± 20% mm	W± 20% mm	
SKE-3F/1=1.5	25.0	9.0	9.0	3.0	16.0	68.0	18.0	2.5	2.0	4-16
SKE-3F/2	31.0	15.0	18.0	5.0	23.0	89.0	24.0	2.5	2.3	16-34
SKE-3F/4	55.8	30.4	22.5	9.0	37.0	180.0	44.0	3.0	2.0	50-150
SKE-3F/5	72.0	37.0	35.0	17.5	55.0	178.0	38.0	4.0	3.0	185-300



**3M™ SKE 4F / 4 Way Outlet Sleeve Breakouts**

Part No.	Expanded Diameter (as supplied)		Recovered Diameter		Recovered Dimensions (fully shrunk)					Conductor Size Range (Mm²)
	H (Min) mm	K (Min) mm	H (Max) mm	K (Max) mm	S (Nom) mm	P± 10% mm	R± 10% mm	HW± 20% mm	W± 20% mm	
SKE-4F/1+2	35.0	15.0	12.0	3.0	22.0	95.0	24.0	2.5	2.0	4-35
SKE-4F/3+4	47.4	21.5	22.9	6.4	38.1	202.0	38.1	4.1	3.3	35-95

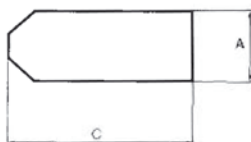


**3M™ SKE 4F/5**

Part No.	Expanded Diameter (as supplied)			Recovered Dimensions (fully shrunk)							Conductor Size Range (Mm²)
	H (Min) mm	K (Min) mm	S (Nom) mm	H (Max) mm	K (Area Max) mm²	S (Max) mm	P± 10% mm	R± 10% mm	HW± 20% mm	W± 20% mm	
SKE - 4F/5	78.7	38.1	76.2	35.6	129.0	50.8	205.0	38.1	3.8	3.3	120-300

**3M™ End Caps**

3M Polyolefin End Caps provide a reliable and easy method of sealing cables for both indoor and outdoor application whilst offering excellent electrical and mechanical protection.



Cable Diameter (mm)	Diameter before shrinkage (mm)		Full recovered dimensions (mm)	
	A	C	A	C
SKE 4/10	4 - 8	10	4	33.5
SKE 8/20	8 - 16	20	8	55.3
SKE 15/40	15 - 32	40	15	90.0
SKE 25/63	25 - 51	63	25	143.3
SKE 30/76	30 - 61	76	30	158.0
SKE 45/100	45 - 80	100	45	162.5
SKE 61/158	61 - 126	158	61	182.0

Electrical Tapes  
 Low Voltage Joints & Terminations  
 Cold Shrink tubes & End Caps  
 Earthing Kits  
 Resins  
 Medium Voltage Joints & Terminations  
 Hazard Area Joint & Termination Kits  
 Cable & Wire Management  
 Lugs & Connectors  
 Heat Shrink  
 Cable & Fault Locators & Electronic Marker Systems