

Underground Distribution

Fuse Service Equipment

Series 7 House Service Cut-outs

(CNE) 240V/415V

The market leading Series 7 range, sets the standard for safety and convenience in House Service Cut-outs.

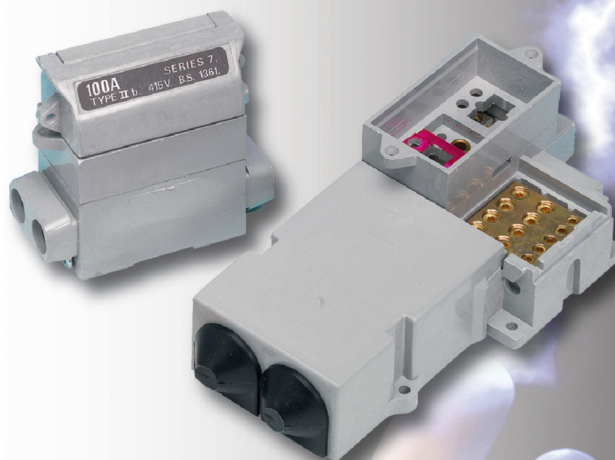
Designed for Combined Neutral and Earth (CNE) systems, rated up to 100A and fully compliant with BS 7657:2010

WT Henley's glass reinforced Polyester (DMC) material provides strength, durability and excellent tracking resistance. Tamper resistant 'pin & plug' protects unused cable entries.

Sharply serrated double entry phase and neutral terminals are suitable for either aluminium or copper conductors from 2.5mm² up to 35mm² and socket headed terminal screws (operated by a custom designed tool) ensure effective and secure connections. Fuse-clips are precision designed to ensure low contact resistance every time.

All phase terminal screws are held captive within the base to make installation as simple as possible.

- Fully compliant with BS 7657:2010
- Designed to ensure secure connection and low contact resistance throughout
- Manufactured from glass reinforced polyester
- Close-coupled version interfaces with industry standard meter types to prevent theft of supply
- Insulated Busbar available for connecting a second Single Pole cut-out / service
- Tamper-resistant 'pin & plug' protect unused cable entries.



The range consists of:

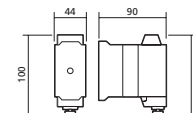
- Standard single pole (SP) cut-out.
- Standard single pole and neutral/earth (SP&N/E) cut-out.
- Close coupled SP&N/E cut-out interfaces with industry standard meter entry port designs to provide security against theft of supply.
- Protection chambers for SP&N/E and TP&N/E versions.
- Insulated Busbar for simple connection of a second SP cut-out / service.
- Fuse carriers rated at either 60/80A or 100A.
- A range of fuse links, 30,60,80&100A.
- SP&N/E isolator - denoted by a red fuse carrier - replaces the fuse with a solid link.

Note: Triple pole and Neutral cut-out sets can be assembled using a combination of SP (2 x SP), SP&N/E and a TP&N protection chamber.

Description	Product Code	
	60/80A	100A
Single Pole Cut-out	54131-04	54132-04
Single Pole and Neutral (with combined neutral earth)	54137-04	54138-12
Close Coupled Design		
Single Pole and Neutral (with combined neutral earth)	54138-02	54138-05
Protection Chambers (with 2 PVC Bushes and blank entries)		
For Single Pole and Neutral and Earth unit	54315-06	
For Triple Pole and Neutral and Earth unit	54315-49	
Accessories and Spares		
Insulated Busbar	54382-01	
Fuse Carriers	60/80A 54365-04	100A 54365-22
Insulated Hexagon Headed Screwdriver/ pin&plug remover	53485-36	
Solid link in red carrier (used in place of fuse-link)	54365-08	
Fuselinks BS HD 60269-3 2010 BS 88-3 2010		
16 x 22 x 57mm to suit 60/80A Carrier	16 x 30 x 57mm to suit 100A Carrier	
30A 58332-04	30A 58332-30	
60A 58333-07	60A 58333-11	
80A 58334-08	80A 58334-04	
100A 58334-09	100A 58334-06	
Isolator		
Single Pole and Neutral and Earth (fitted with red solid link carrier)	54361-05	
Maximum Cable Sizes		
Phase and Neutral (incoming and outgoing)	35mm ²	
Earth	25mm ²	
Time switch	10mm ²	

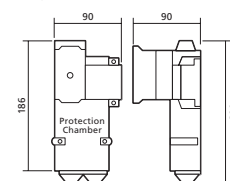
Note: For single-pole-and-neutral and triple-pole-and-neutral sets, the Cut-outs and protection chambers are supplied as separate items for on site assembly

Single Pole



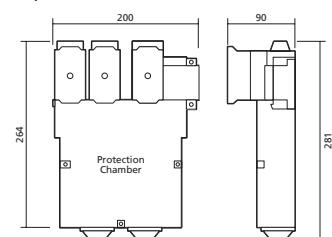
60A/80A 54131-04 100A 54132-04

Single Pole and Neutral Set



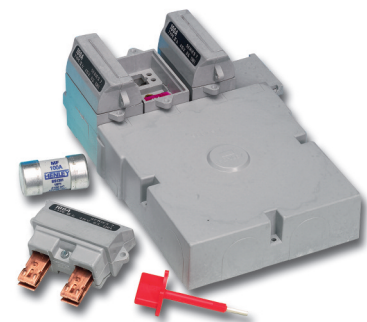
60A/80A 54137-04 54315-06 100A 54138-12 54315-06

Triple Pole and Neutral Set



60A/80A 2 x 54131-04 1 x 54137-04 1 x 54315-49 100A 2 x 54132-04 1 x 54138-12 1 x 54315-49

All dimensions in mm



WWW.CABLEJOINTS.CO.UK
THORNE & DERRICK UK
TEL 0044 191 490 1547 FAX 0044 477 5371
TEL 0044 117 977 4647 FAX 0044 977 5582

3 the
l is
out prior written

14688 2014-02-01

